



ICAO
ECUADOR

Master Plan



101st Anniversary
Ecuadorian Air
Force



IVAO
ECUADOR

IVAO Ecuador SO Dept is proud to invite you to



*101 ANNIVERSARY
ECUADORIAN AIR
FORCE (FAE)*

AIRPLANES, FUN, AND
FESTIVITIES

CELEBRATE WITH US
OCT. 30, 2021, SATURDAY AT 20 UTC
QUITO - ECUADOR

Index

1. Introduction.....	1
2. Briefing.....	2
3. Mission Description.....	2
<i>"Jaguar"</i>	8
<i>"Pegasus"</i>	11
<i>"Dragons"</i>	15
<i>"Condor"</i>	18
<i>"Quinde"</i>	22
Brief Summary.....	24
Minimum Sector Radar Altitude Chart.....	28
4. Airports.....	29
5. ATC.....	36
6. Radio Comms and Nav Aids.....	36
7. Ecuadorian Air Force Fleet.....	37
8. Callsign.....	38
9. Sceneries.....	38
FSX P3D.....	38
X-Plane 11.....	39
10. FPL.....	40
11. Charts.....	40
12. Other.....	40



1. Introduction.

A century ago, started the dream to fly in Ecuador. It all started on “Guayas Shoot Club” were some personalities for this time met and proposed a revolutionary idea. Cosme Rennella Barbato, Pedro Travesari, and Elia Luit are the aviation fathers on Ecuador. For his work on October 27th, 1920. Ecuador President Dr. Jose Luis Tamayo ordered to constitute 2 military aviation schools in Quito and Guayaquil. Since this day, each October 27th we celebrate Ecuadorian Air Force (FAE) anniversary and National Aviation Day.

Since 1920, Ecuador Air Force has been performed a lot of missions in benefit for Ecuadorians. Their bases and fleet have been upgrading. Ecuadorian Air Force currently has six bases. Guayaquil, Taura, Manta, Latacunga, Salinas, and Lago Agrio. Also, there are 60 aircraft in their fleet.

Every year, the Ecuadorian Air Force always organizes a military ceremony at “*Mariscal Sucre Air Base*” where Ecuador President, Vice President, Defence Minister, and other Military Authorities are present. Also, they always perform an Air Show over Quito (Ecuador Capital). They perform several low-level group flights over Quito to pass over “*Mariscal Sucre Air Base*” located at “*Old Mariscal Sucre Airport*” (SEQU) nowadays “*Bicentennial Park*.” “*Mariscal Sucre Air Base*” is used as a base since the ‘60s until Quito Airport was moved to Tababela in 2012. Air Force moved their Transport Base to Latacunga Airport. Nowadays “*Mariscal Sucre Air Base*” is a Quito’s heritage building. Aeronautical and Space Museum and others operate inside the base. Some aviation fans and the public usually see this show at this park.

October is Air Force month, so IVAO Ecuador Special Operations Department is proud to invite all of you to this virtual ceremony on October 30th, 2021, from 20h00 UTC to 22h00 UTC at Quito Mariscal Sucre Old Airport (SEQU). Take your favourite aircraft, fighter, heavy cargo, rotorcraft. Prepare your base and fly to God’s Face to commemorate this anniversary.



2. Briefing.

To clear any question or explain this master plan and guarantee a good event performance, a pre-mission briefing will be done at [IVAO HQ-SOD Discord Official Server](#) at 19h15 UTC. The briefing will be done in both languages (Spanish and English).

3. Mission Description.

We start with some general instructions for this event.

Ecuadorian Air Force distributed their fleet according to their mission in different points in Ecuador.

These bases are Taura Air Base (SETA) located in Guayas, Simon Bolivar Air Base (SEGU) located in Guayaquil, General Ulpiano Paez Air Base (SESA) at Salinas, General Eloy Alfaro Air Base (SEMT) at Manta, Mariscal Sucre Air Base (SEQU) at Quito, Cotopaxi Air Base (SELT) at Latacunga, Lago Agrio Air Base (SENL) at Nueva Loja, finally Galapagos Air Base (SEGS) at Baltra Island. Each base is home form different “Squads”.

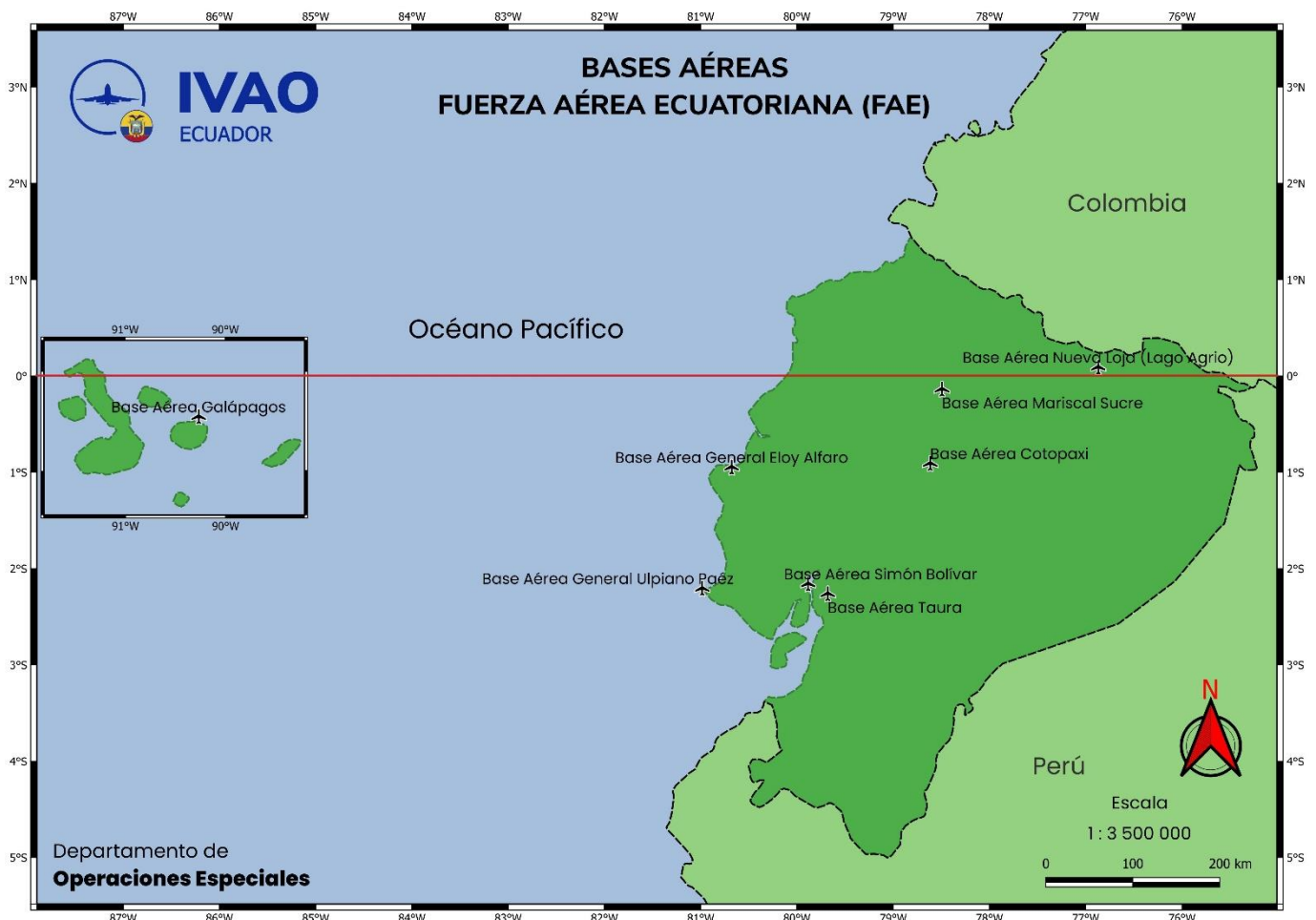


Fig.3.1. Ecuadorean Air Force Bases in Ecuador.

Taura is the only military airport inside Guayaquil FIR.

- **Taura Air Base** is home base from Combat Wing N° 21, Squad 2112 "Cheetah" and Squad 2113 Kfir. Taura only host Fighters Aircraft
- **General Ulpiano Paez Air Base (Salinas)** hosts Military Aviation College (ESMA) "Cosme Rennella Barbato", so it uses for training purposes.
- **General Eloy Alfaro Air Base (Manta)** is home from Combat Wing N° 23 "Dragons" which uses Embraer 314 "Super Tucano". In the past US Air Force used to use this base.
- **Mariscal Sucre Air Base (Quito)** was home from Transport Wing N° 11, also it is used to base on VIP Transport. Nowadays Old Quito Airport is a park. Air Force decided to move their base to cargo to **Latacunga** and VIP transport base is New Mariscal Sucre at Tababela.

These are the bases that we will use for this event.

Quito is located at 2 850 m (9 350 Ft). It is a plate surrounded by mountains. It is complicated terrain. **Old Quito Airport (SEQU)** is elevated at 9 228 Ft. We will use it runway for all this event, our main VOR is going to be **QIT VOR/DME "Condorcocha"** 115.300 MHz. and **QMS VOR/DME "Monjas Sur"** 114.800 MHz. FSX and P3D still have the oldest nav aids. (Check part 6. There is a small mountain range between SEQU and SEQM. This divides the plate from a valley. This is your visual reference for Air Show manures.

****Intentionally left in blank****



<https://en-qb.topographic-map.com/maps/lpzw/Quito/>

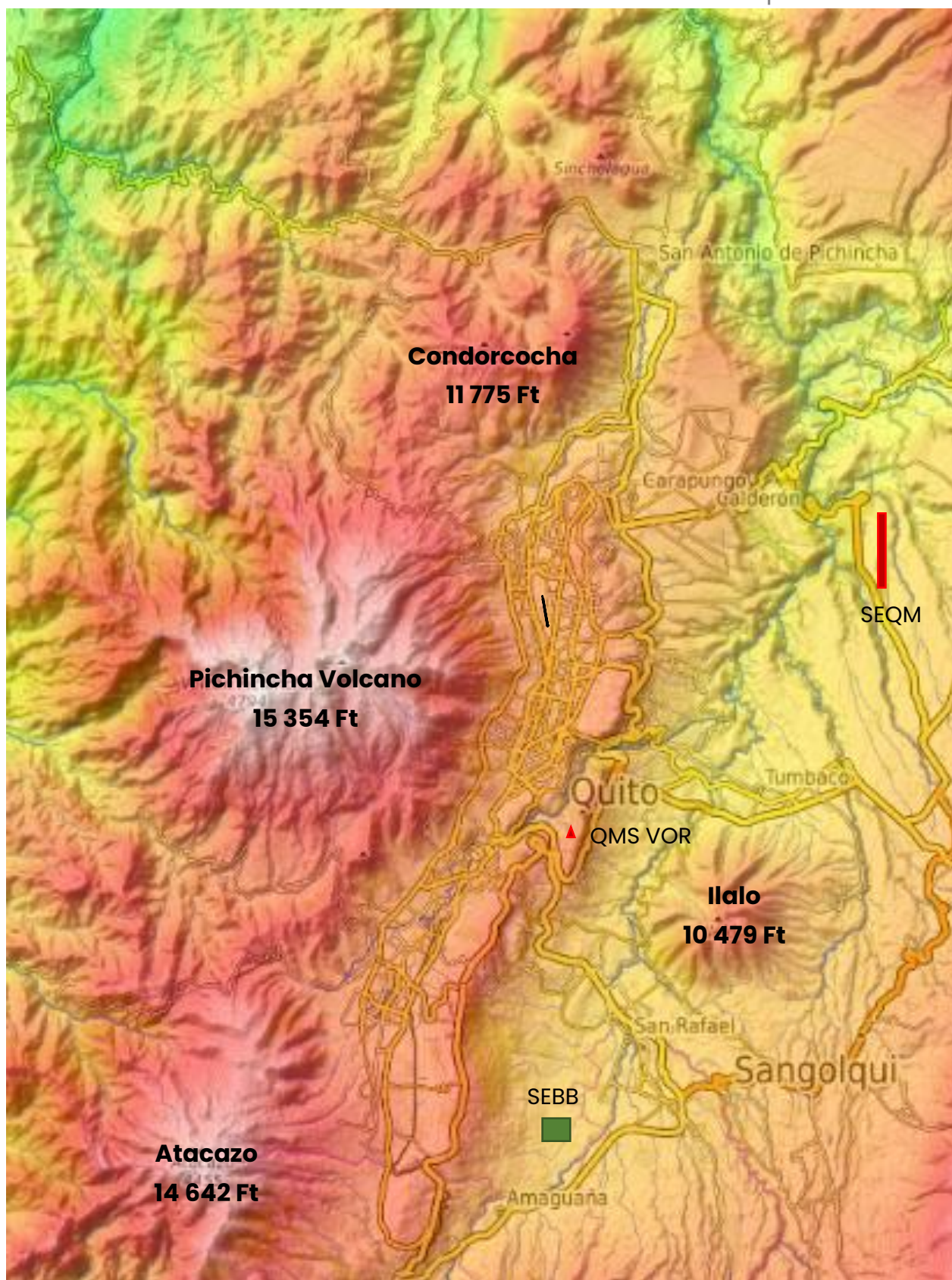


Fig.3.2. Topo Chart Quito.



In real life, the aircraft that participate in this event is. IAI K Fir or Atlas Cheetah, Embraer 314 "Super Tucano", Boeing 737 – 200, Lockheed C-130 "Hercules", Grob G 120 TP, and AgustaWestland AW119 "Koala." Usually Atlas Cheetah, Embraer 314, and Grob G 120 TP flight as an escort.

You are free to decide your favourite aircraft to participate in this event. We just suggest aircraft. It is important that you keep the same line. Nowadays Ecuadorian Fighters are under maintenance, and it is difficult to see rotorcraft at this event. Nevertheless, on this occasion, we try to simulate this show but adopted IVAO. If you decided to fly an aircraft outside some squad (VIP, utility) contact me immediately to organize a new squad.

According to NOTAM maximum altitude reserved is 18 500 Ft. Max speed during Low Pass is according to formation assigned and ATC instructions.

QMS VOR/DME "Monjas South" is located 12 NM radial 174° Outbound from **QIT VOR/DME "Condorcocha."** All visual holds will be developed in this sector. QMS VOR/DME coordinates are S00°14'00"W078°28'39." This is the main fix for holdings except for Rotorcraft.

Rotorcraft expect to hold at 10 500 Ft over the "El Ejido" Park sector. Coordinates S00°12'35"W078°29'55." Radial 180° DME 10 NM from QIT VOR/DME.

Holding Area extends from Radial 197° 9 NM DME from QIT, to Radial 160° 10 NM DME, then to Radial 169° 15 NM DME, finally to radial 192° 15 NM DME. It extends from GND to FL 185. Polygon coordinates vertex are S00°11'15"W078°32'45", S00°11'15"W078°26'45", S00°17'15"W078°26'45", S00°17'45"W78°32'45".

Final fix to approach runway 35 is Radial 173° 09 DME from QIT VOR/DME, or Radial 360 3 NM DME from QMS VOR/DME

Flight planes could be Y or VFR. If you depart from Taura (SETA) or Manta (SEMT) you must flight to *Latacunga* VOR/DME (LTV), then expect to flight to Radial 174° 12 DME from QIT VOR/DME (QMS VOR/DME).

Cargo aircrafts escorted expect pass after 30 seconds behind your escort formation.

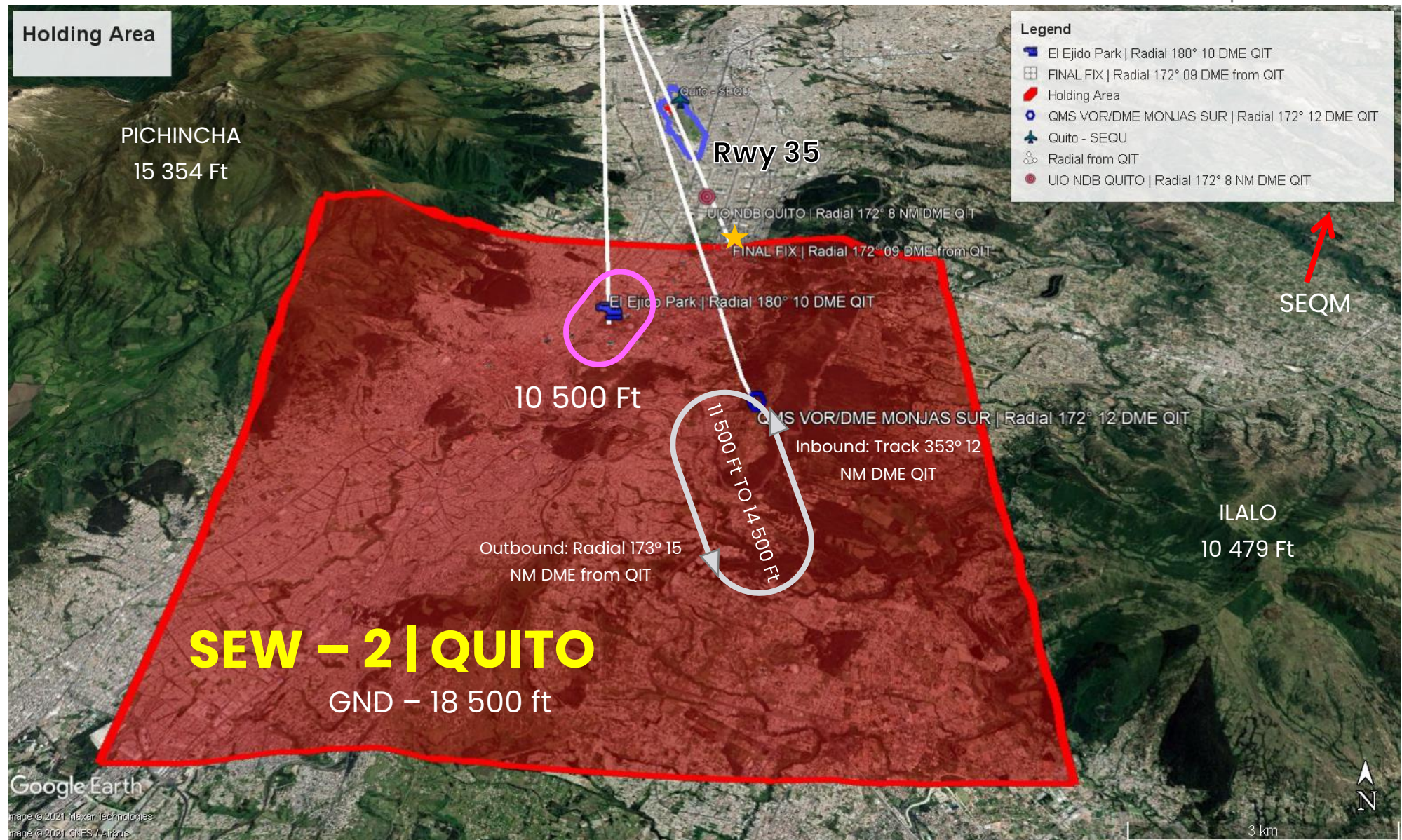


To organize low passes and group flights we create "Formations." All flights will be in formations. Depending on traffic amount some airplanes will be used as escorts as in real life. For this reason, is important that you send a mail to ec-soc@ivao.aero with your VID + Aircraft intend to flight as soon as you register.



El Ejido Park, Quito

****Intentionally left in blank****





After saying this. Formations for this event with their missions are:

“Jaguar”

Aircraft: Fighters.

Place: Taura Air Base (SETA).

Time: 19h50 UTC.

Flight Rules: Y/VFR.

Description:

Taura is located near Guayaquil. All pilot that will be fly with fighters should be called Jaguar squad. Fighters will be departing at 19h50 UTC from Taura (SETA), inside SEP-1 and SER-2 “Taura” there are not any navaid. You must fly to LTV VOR/DME to start formation to pass over Quito. Maximum flight speed is 250 Knots, except ATC restrictions and Maximum FL 270. Fighters will open the air show and will close it. They flight in a triangle formation behind a leader. Expect Hold at 14 500 Ft. Low passes over SEQU runway 35 are at 400 to 500 Ft. After pass over older runway 35, turn right to join right-hand traffic pattern runway 35 as shown in the figure. All traffics in Quito TMA must contact Quito Approach. They realize visual holdings. Fighters will escort aircrafts from “Pegasus” Squad (Heavy Cargo). Fighters expect 4 passes over SEQU. Two in formation and two as an escort.

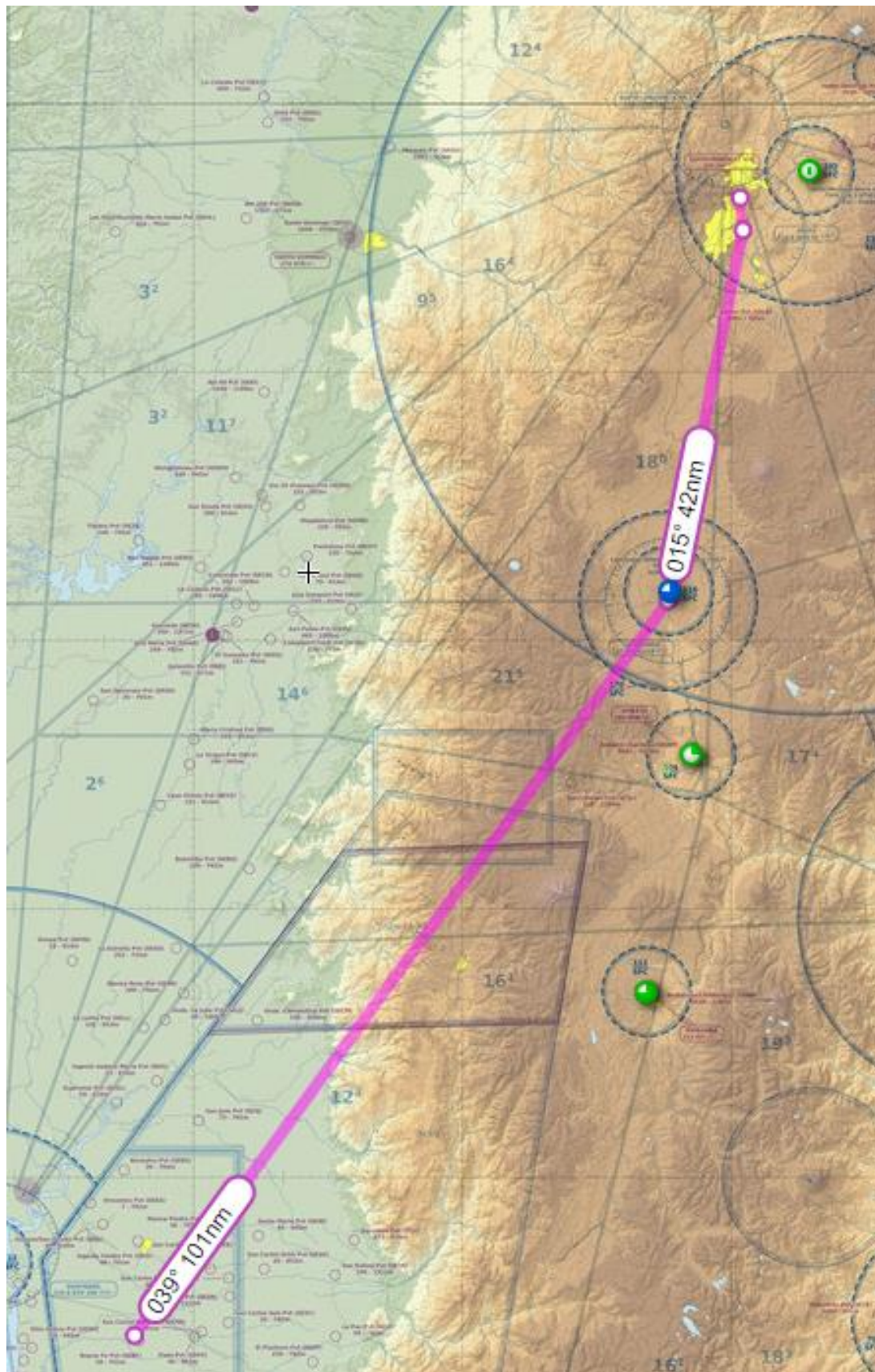
1st Pass. Fights fighting in group at 20h20 UTC, then expect holding to escort “Pegasus” formation.

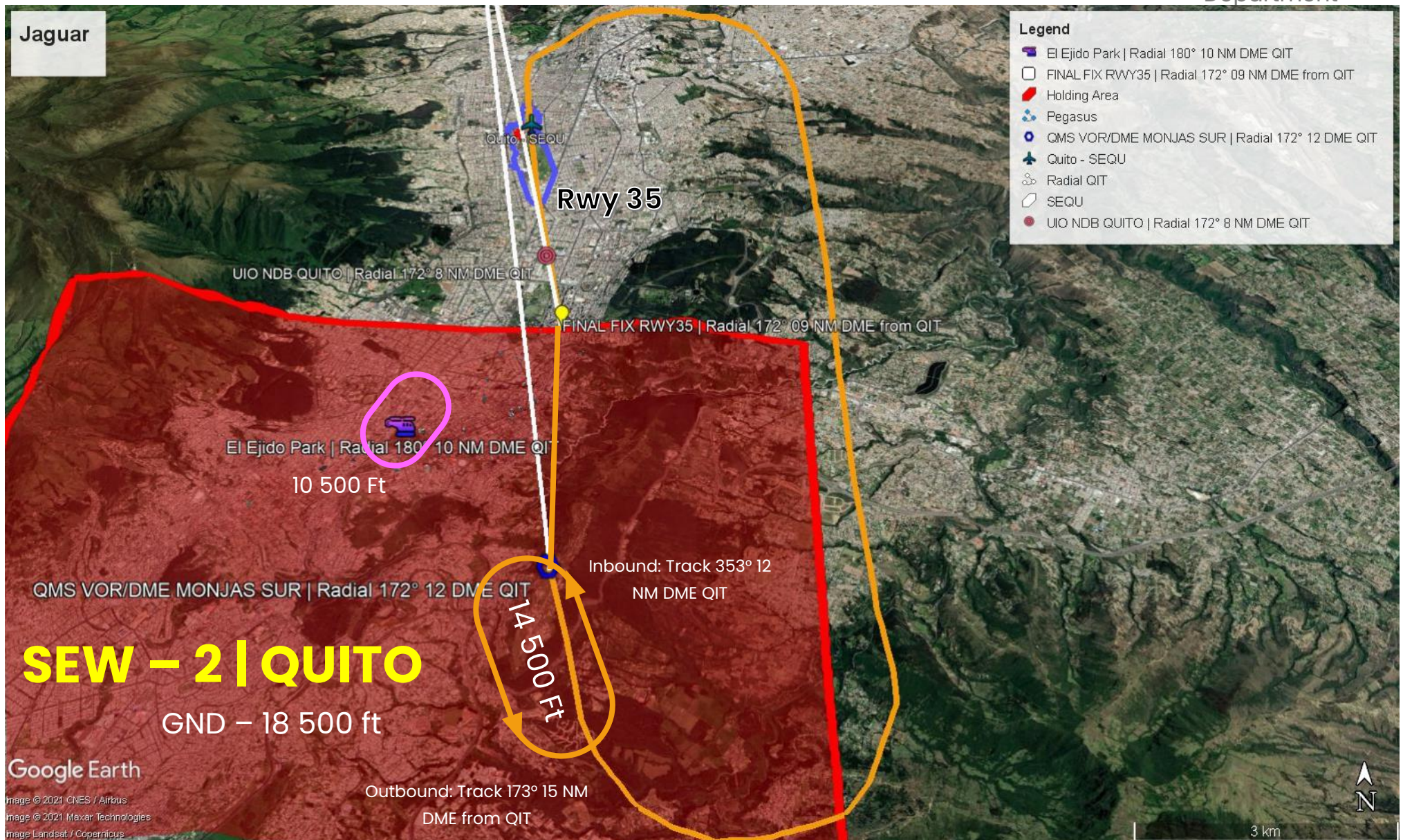
2nd Pass. It should be escort flight to “Pegasus” formation (jet cargo aircraft).

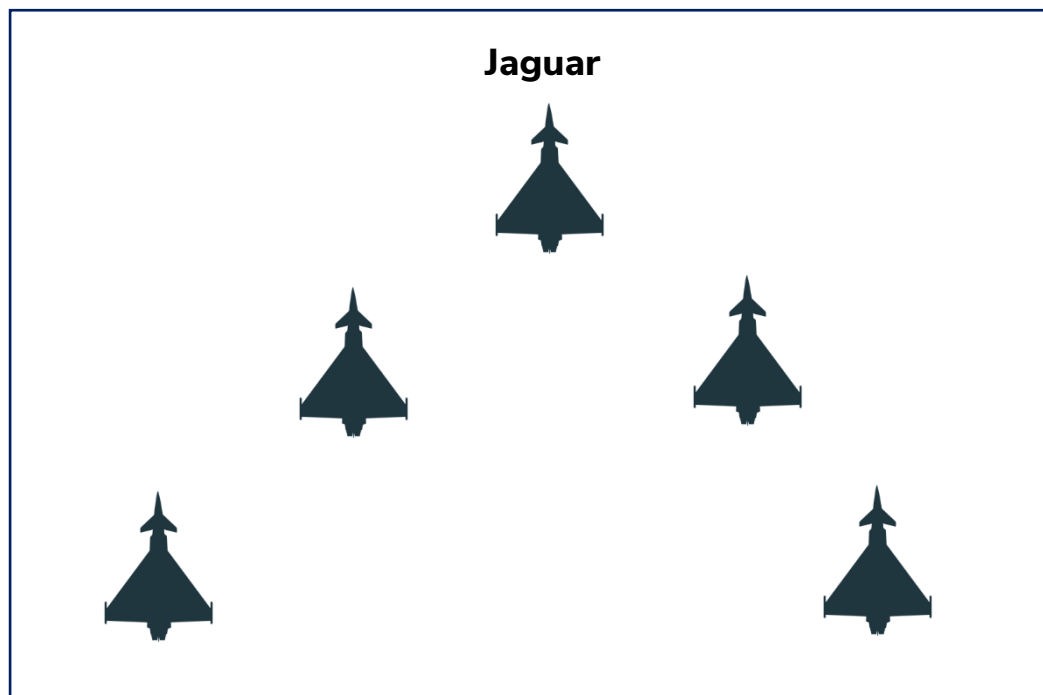
3rd Pass. It should be double escort to “Pegasus” formation with “Dragons” formation. “Dragons” will flight first; second “Pegasus” and “Jaguar” are the final.

4th Pass. It will be the final one. It needs just two fighters. One will fighter come from South from QMS to Runway 35. The second one come holding zone, join left-hand traffic pater runway 17 at the same time two fighters will approach SEQU and draw a cross in the air. It needs an extremely coordination between two pilots involved.

After it expects ATC vectors to retear to Taura.







“Pegasus”

Aircraft: Heavy Cargo (B727, B737, C-295, C-130).

Place: Cotopaxi Air Base | Cotopaxi International Airport – Latacunga (SELT).

Time: 20h15 UTC.

Flight Rules: Y/VFR.

Description:

“Pegasus” squad is the largest in Ecuadorian Air Force. It has two parts. Jet and Turboprop. Depart from *Latacunga* at 20h15. Flight to Quito, expect holding to be the **second pass** over SEQU behind the *Jaguar* formation.

They will fly in a triangle formation behind a leader. The maximum speed the whole time is 200 Knots. Low passes are at 400 to 500 Ft. Expect **hold at 13 500 Ft.** After pass over older runway 35, turn right to join **right-hand traffic pattern runway 35** as show in the figure. All traffic in Quito TMA must contact Quito Approach. You are going to realize visual holdings or over QMS VOR/DME holdings. For formation, the leaders will be jet aircraft as Boeing B727-200, Boeing 737-200, or similar followed by turboprop aircraft like Lockheed C-130 “*Hercules*”, CASA C-295, or similar. Finally closed by a Jet Aircraft.



Expect 5 passes over SEQU. It is the same route as the Jaguar.

1st Shoot. In it, all the squad is going to pass over Quito. Expect pass at 20h25 UTC

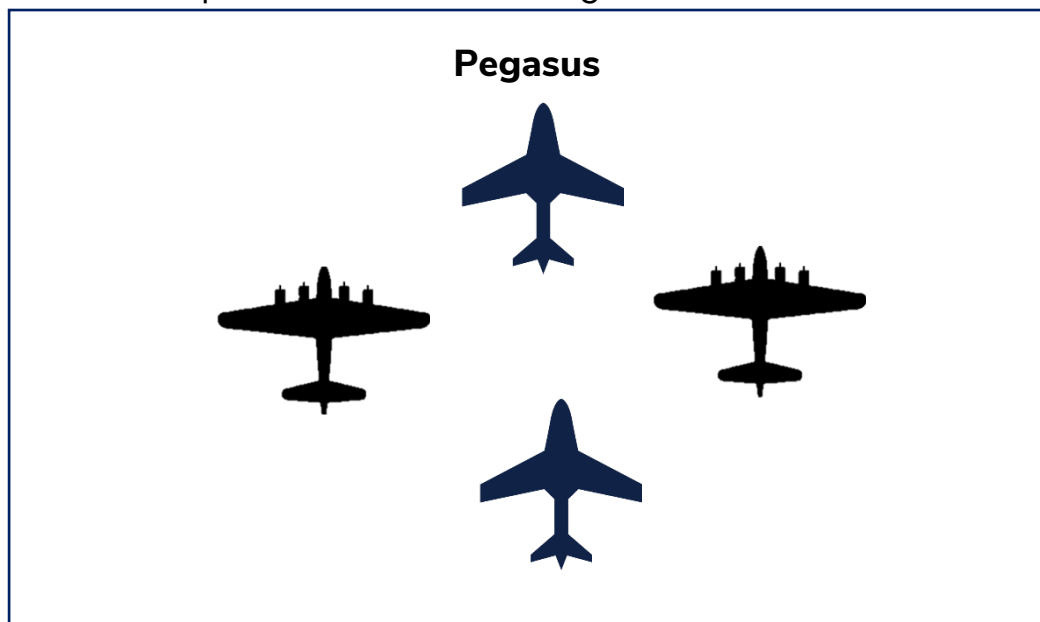
2nd Shoot. It is just a jet aircraft from a squad escorted by Jaguar.

3rd Shoot. It is all the squad escorted by Jaguar and Dragons.

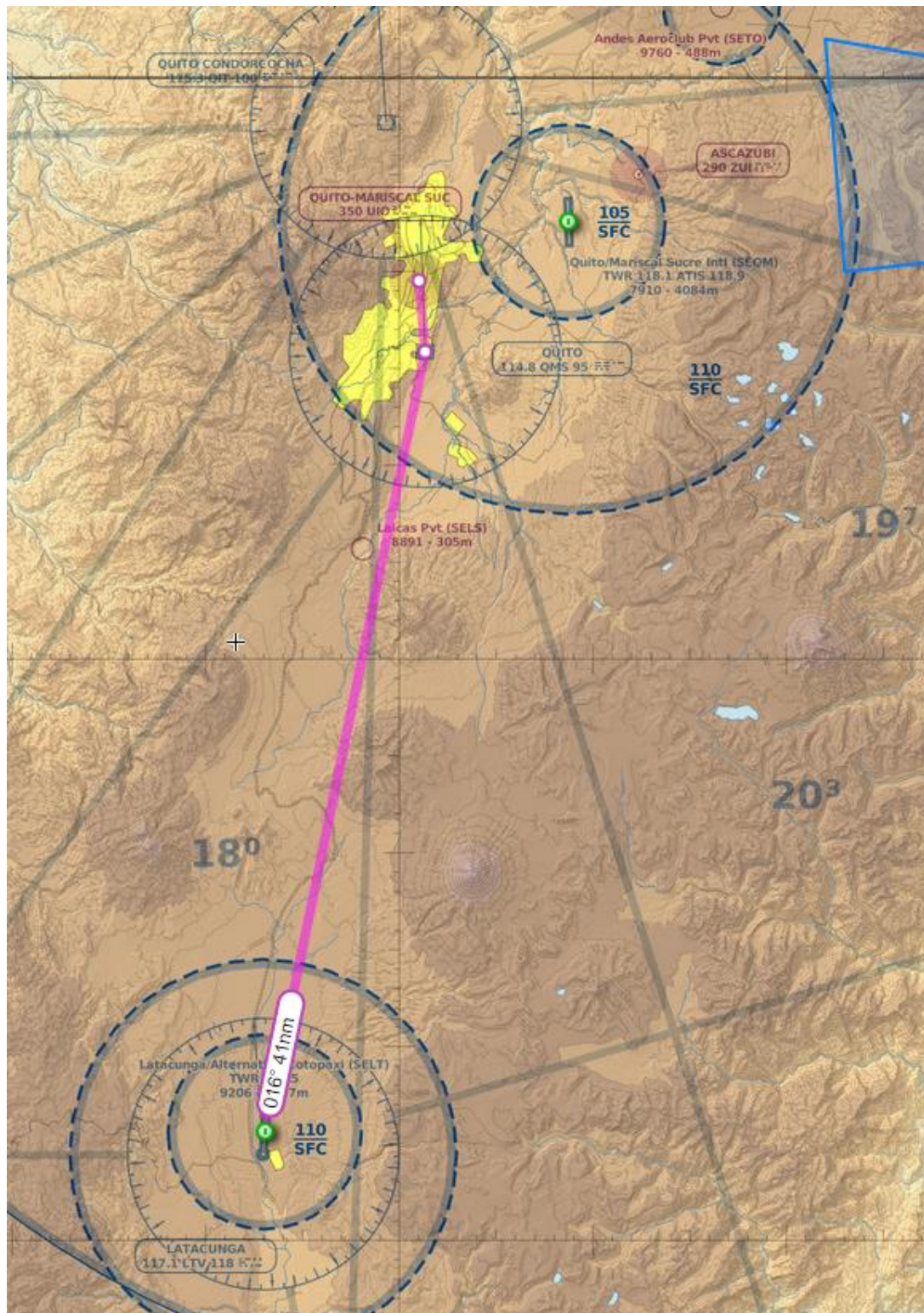
4th Shoot. It is just turboprop aircraft from the squad escorted by Condor.

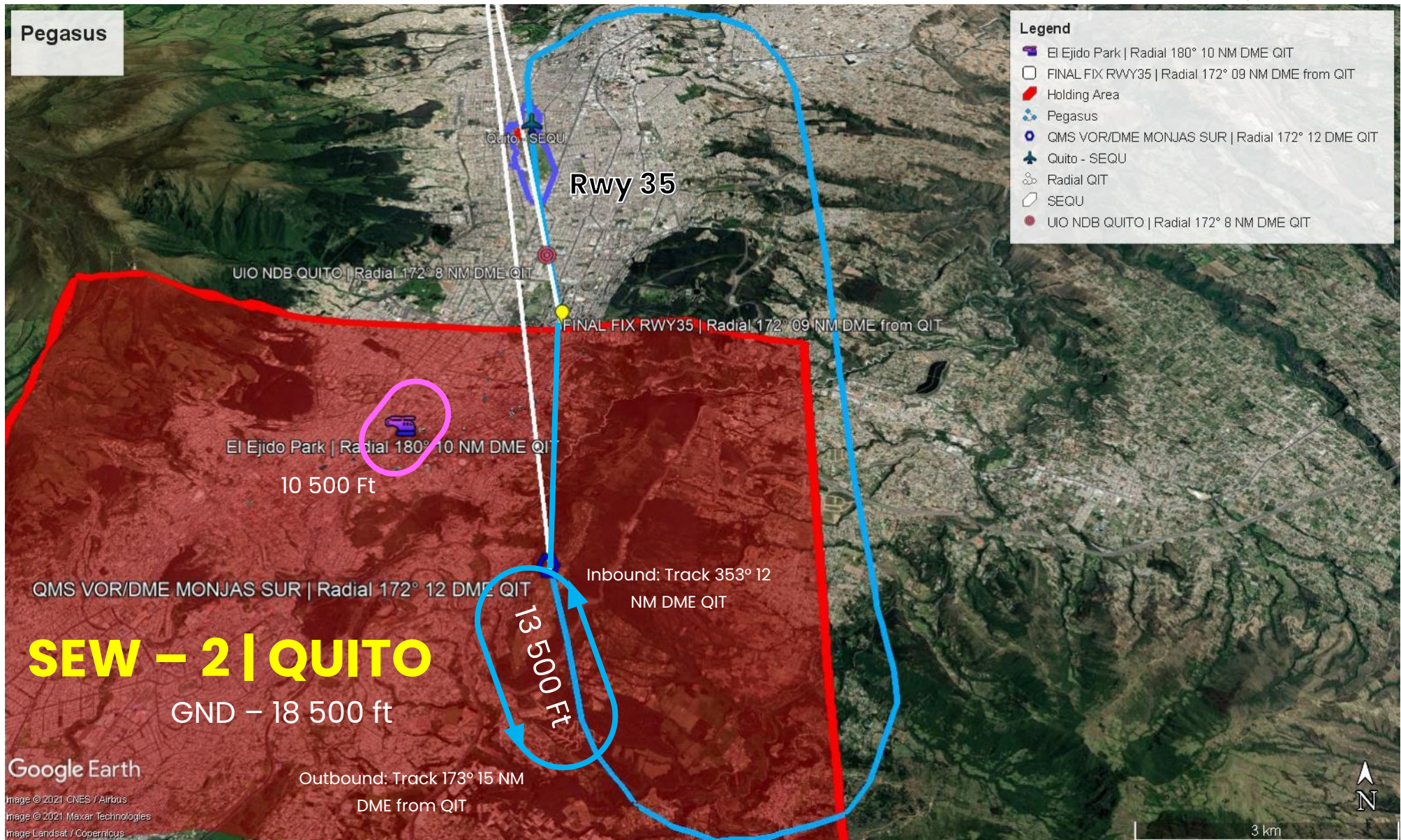
5th Shoot. It is the final pass, all squad escorted by Dragons.

After it. Expect vectors to Latacunga.



****Intentionally left in blank****







“Dragons”

Aircraft: Advanced Trainer and Light Attack (EMB-314).

Place: Gral Eloy Alfaro Air Base – Manta (SEMT).

Time: 20h05 UTC.

Flight Rules: Y/VFR.

Description:

Ecuador replaced their Cessna A-37 Dragonfly for the new Embraer EMB-314 to will be operated in Manta and Lago Agrio. It usually performs missions against “narco” and “guerrillas.”

Expect departure at 20h05 UTC from Manta (SEMT). The maximum altitude is FL 270. Fly to LTV Latacunga VOR/DME to organize formations, then fly to Quito.

Expect number 3 to pass over Quito. You must perform 5 passes. Expect holding at 12 500 Ft, maximum speed is 200 Knots. After pass over older runway 35, turn left to join **left-hand traffic pattern runway 35** as shown in the figure. All traffic in Quito TMA must contact Quito Approach. You are going to realize visual holdings or over QMS VOR/DME holdings.

Dragons will escort Condor (Trainer) and Pegasus (Cargo).

1st Pass. It is a simple formation after *Pegasus* (Cargo), and before *Condor* (Trainer). Triangle formation. Expect pass at 20h30 UTC

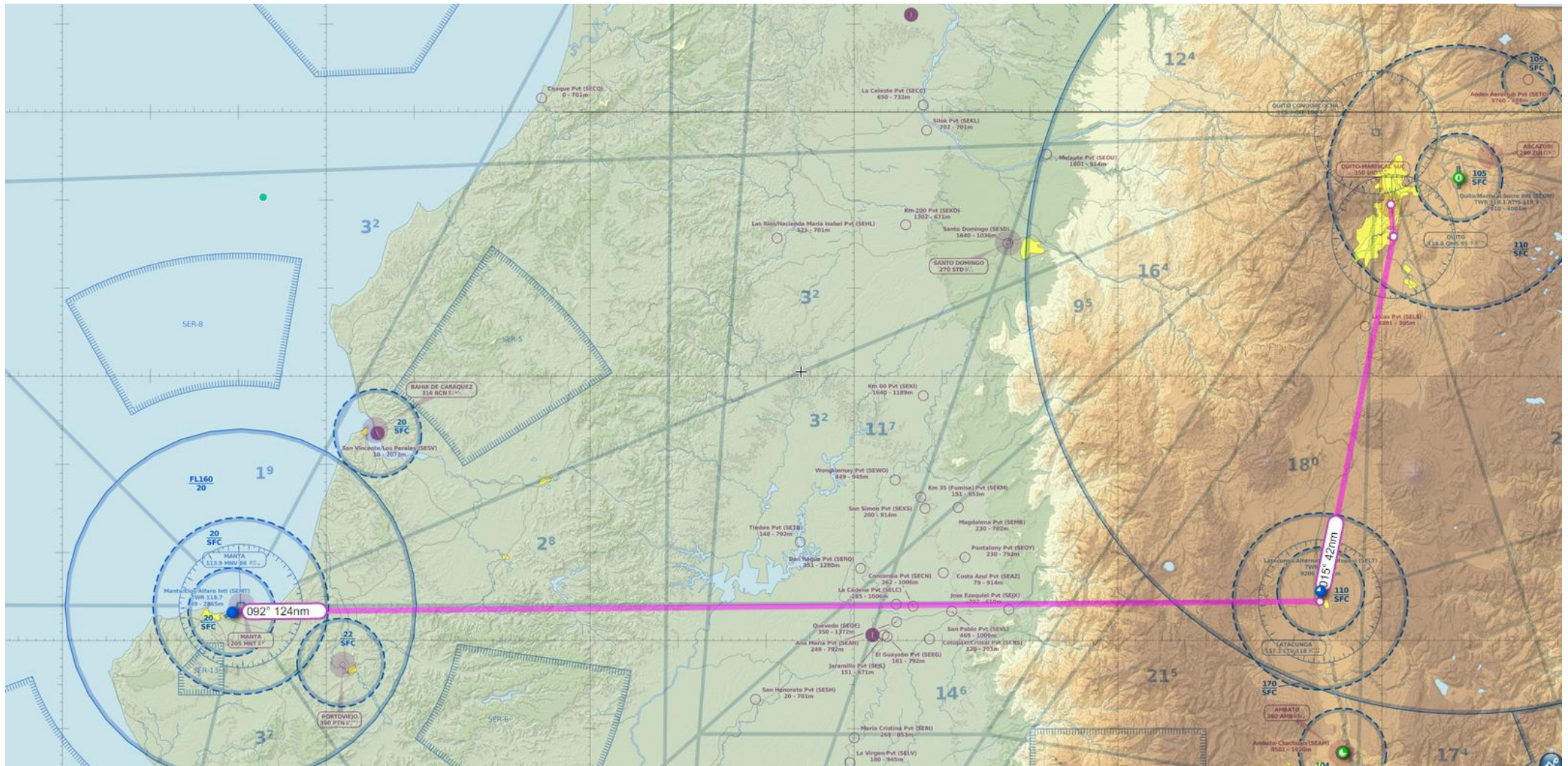
2nd Pass. It is an escort flight to the *Condor* formation

3rd Pass. It is an escort flight with *Jaguar* and *Pegasus*. *Dragons* flight behind *Pegasus*.

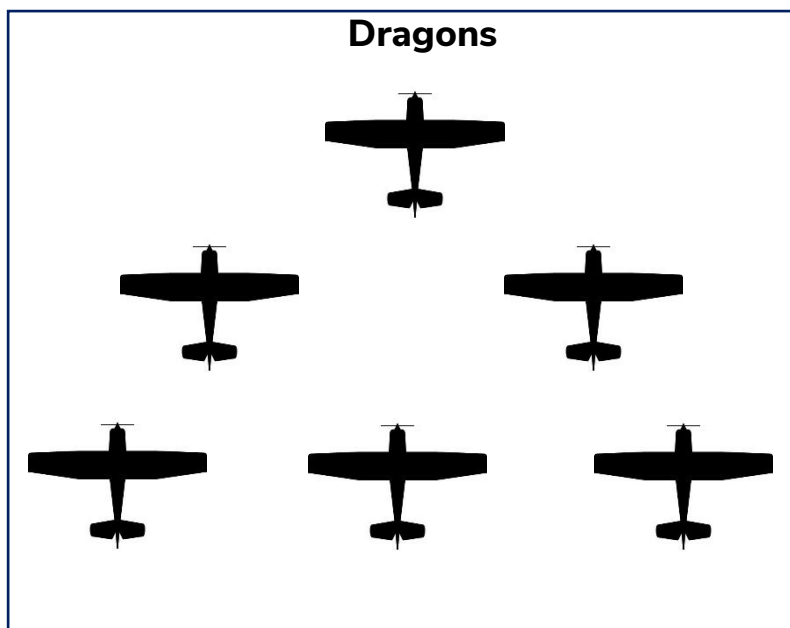
4th Pass. It is a flight with *Condor*. The difference with 2nd pass is now *Condor* will escort you.

5th Pass. Final Pass. Escort flight with *Pegasus* turboprop aircraft.

After it. Expect vectors to Latacunga.







“Condor”

Aircraft: Trainers (G-120 TP)

Place: Cotopaxi Air Base – Latacunga (SELT)

Time: 20h20 UTC

Flight Rules: Y/VFR

Description:

During the last decade, Ecuador has been invested some resources in Education. ESMA fleet has been updated. Nowadays this fleet is just single engines. Grob G-120 TP and Diamond Katana 20. Their base is Gen. Ulpiano Paez at Salinas. However, during this event, this aircraft uses Cotopaxi Base as their main base.

Expect departure at 20h20, flight to Quito, you will be number 4 at the air show. You will be escort flight for Quinde and Pegasus. Expect hold at 11 500 Ft maximum speed 200 Knots. After pass over older runway 35, turn left to join left-hand traffic pattern runway 35 as shown in the figure. All traffic in Quito TMA must contact Quito Approach. You are going to realize visual holdings or over QMS VOR/DME holdings.

Expect 5 passes over Quito.

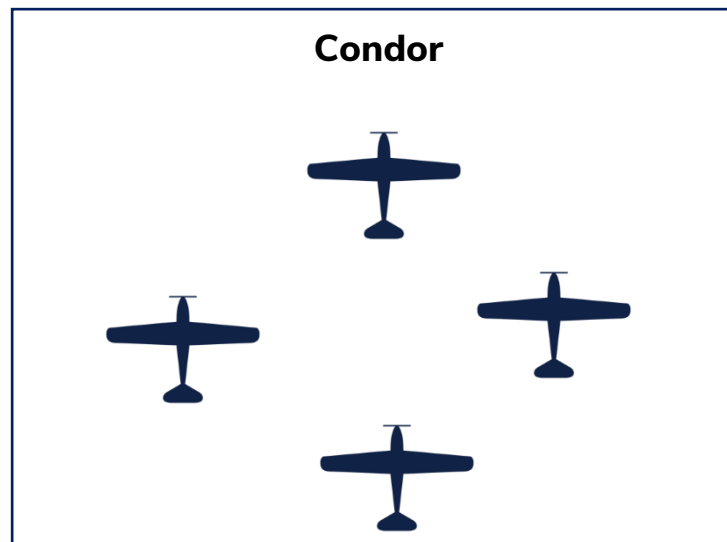
1st Pass. It is a simple formation. After Dragons and Before Quinde. Expect it at 20h35 UTC.

2nd Pass. It will be a simple formation in conjunction with Dragons. Dragons will escort Condor.

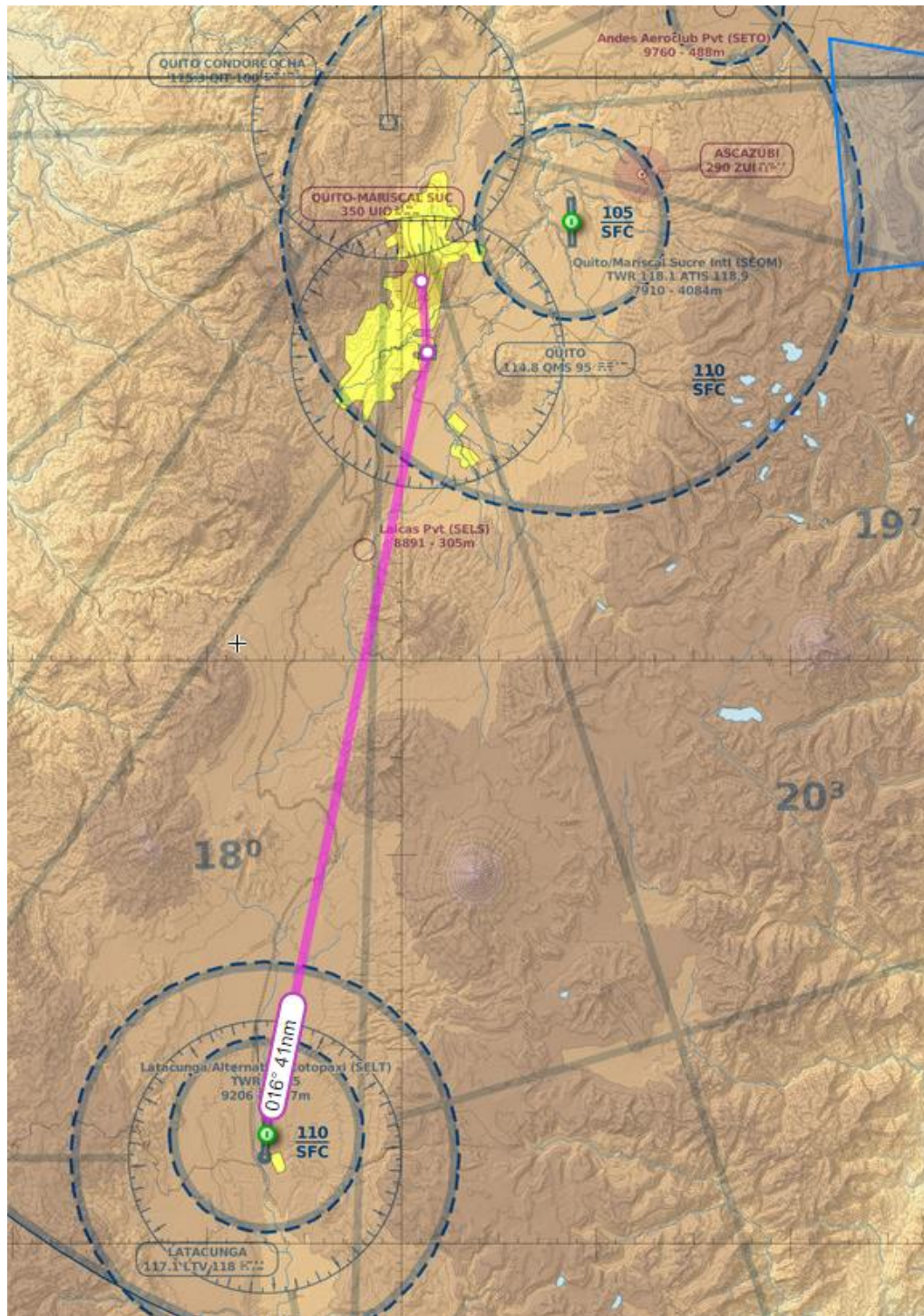
3rd Pass. It will be an escort flight to Quinde.

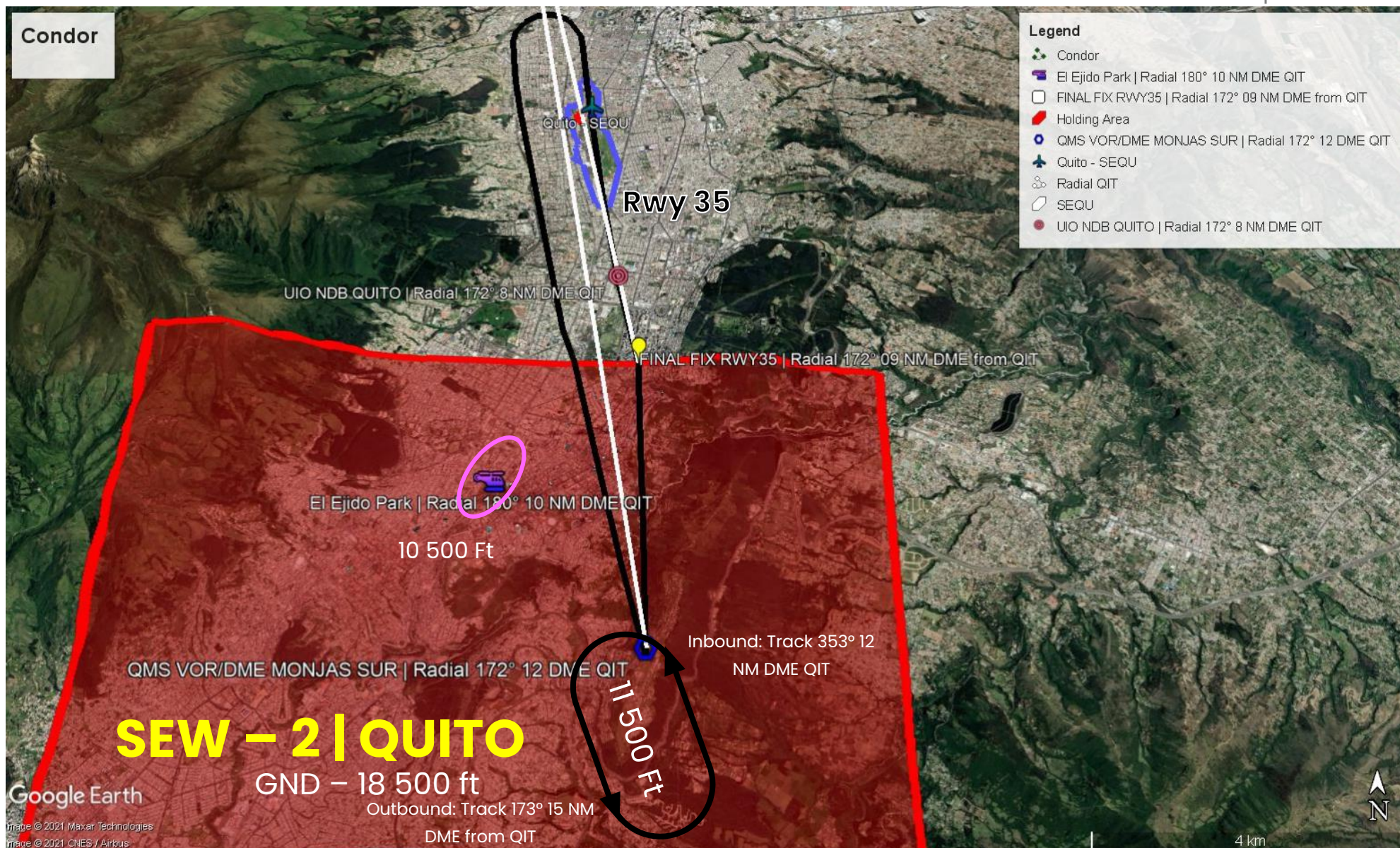
4th Pass. It will be a simple formation in conjunction with Dragons. The difference with 2nd pass is now Condor will flight first escorting Dragons.

5th Pass. It is the final pass. Like number one.



****Intentionally left in blank****







“Quinde”

Aircraft: Helicopters (AW-119)

Place: La Balbina Base – Sangolqui (Quito) (SEBB)

Time: 20h30 UTC

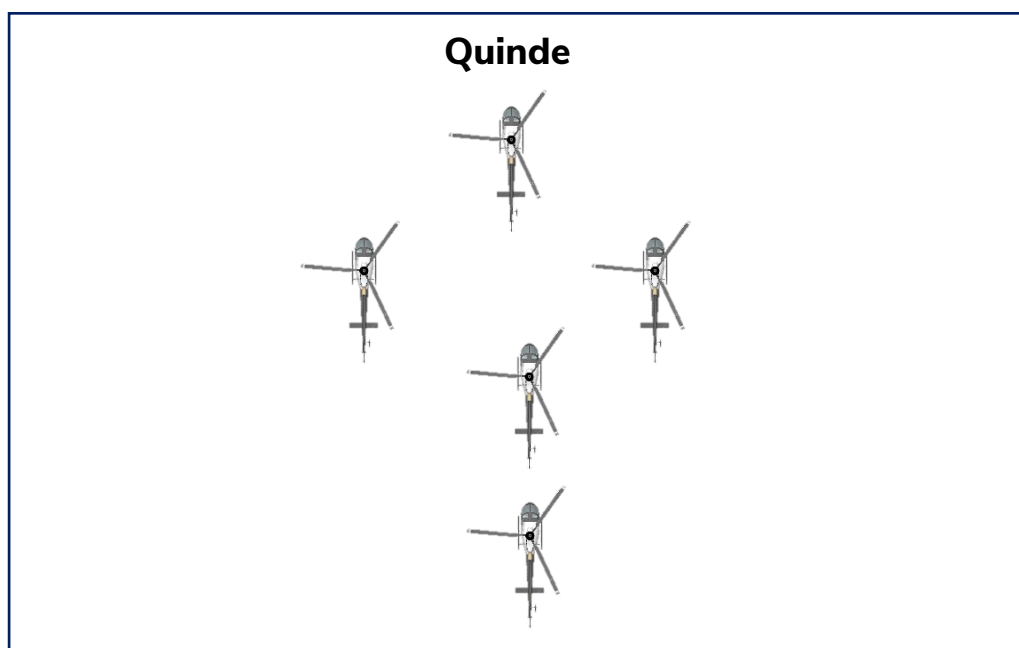
Flight Rules: VFR

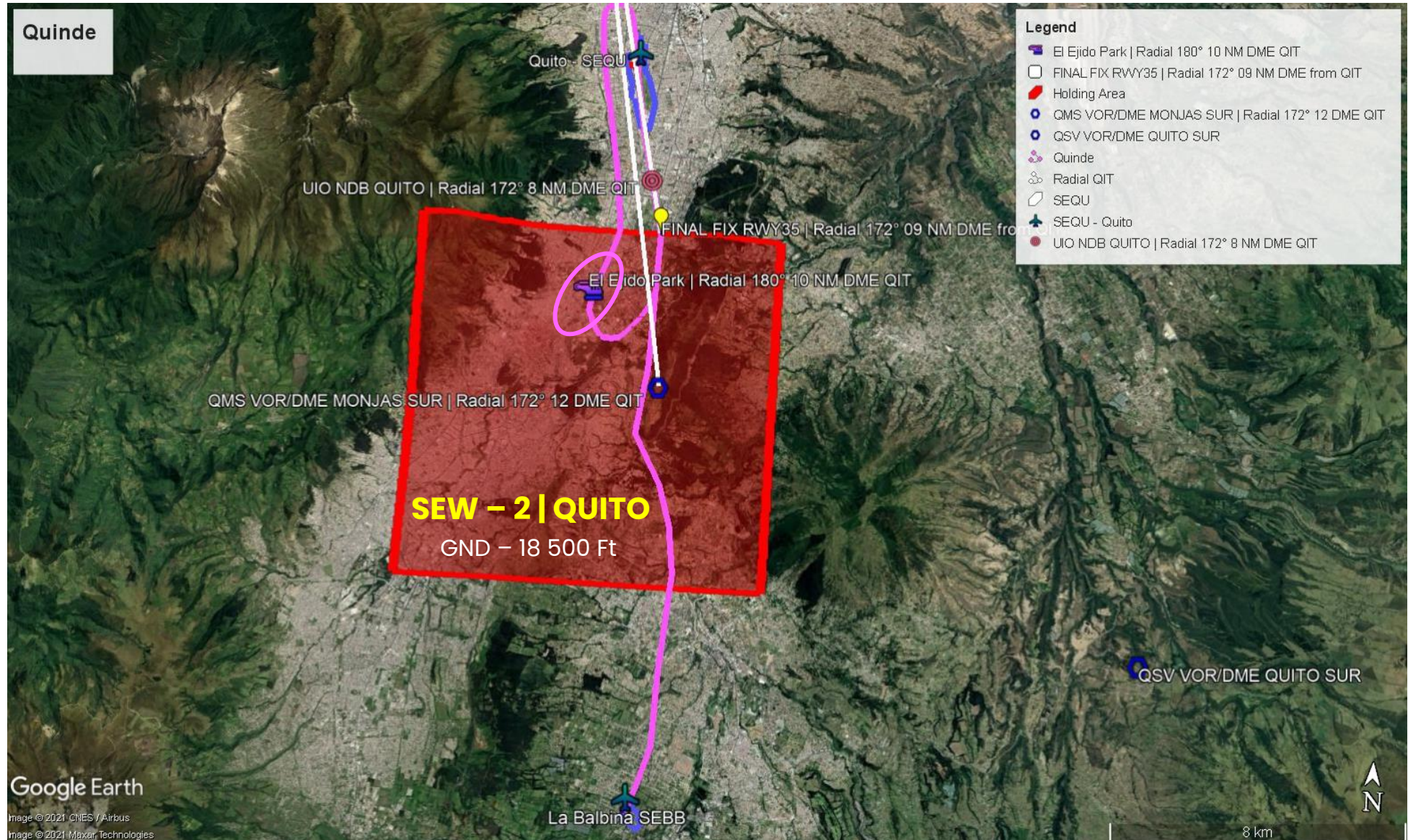
Description:

Ecuadorian Air Force does not have helicopters based in Quito. “*La Balbina*” Military Helipad (SEBB) is a base near Quito which hosts Ecuadorian Army Aviation. It usually uses for their air shows over Quito. For this event, FAE will be used this base to organize an Air Show with helicopters. Its squad will be called. “*Quinde*.” It is a traditional bird from Quito; it is like a hummingbird.

La Balbina is in a valley. It is a class G airport. It is not mandatory to contact in the ground to get a clearance, you can depart and contact with APP for a clearance in the air.

It will depart at 20h30 UTC, fly to Quito and you are the middle show formation. Expect to be **number 5** to pass over SEQU. After trainers and before fighters. To expect to pass at 20h45 UTC Depart from *La Balbina* (SEBB) flight to Quito. Try To maintain 100 Knots, maintain VFR, try to flight 2 500 Ft AGL. Holdings over Quito will be at 10 500 Ft near “EL Ejido Park”. Helicopters are not going to have escorts. After leaving the holding zone, you must flight over taxiway A in SEQU to perform a low pass. Then, turn left to join the left-hand traffic pattern runway 35. All the passes are equal.

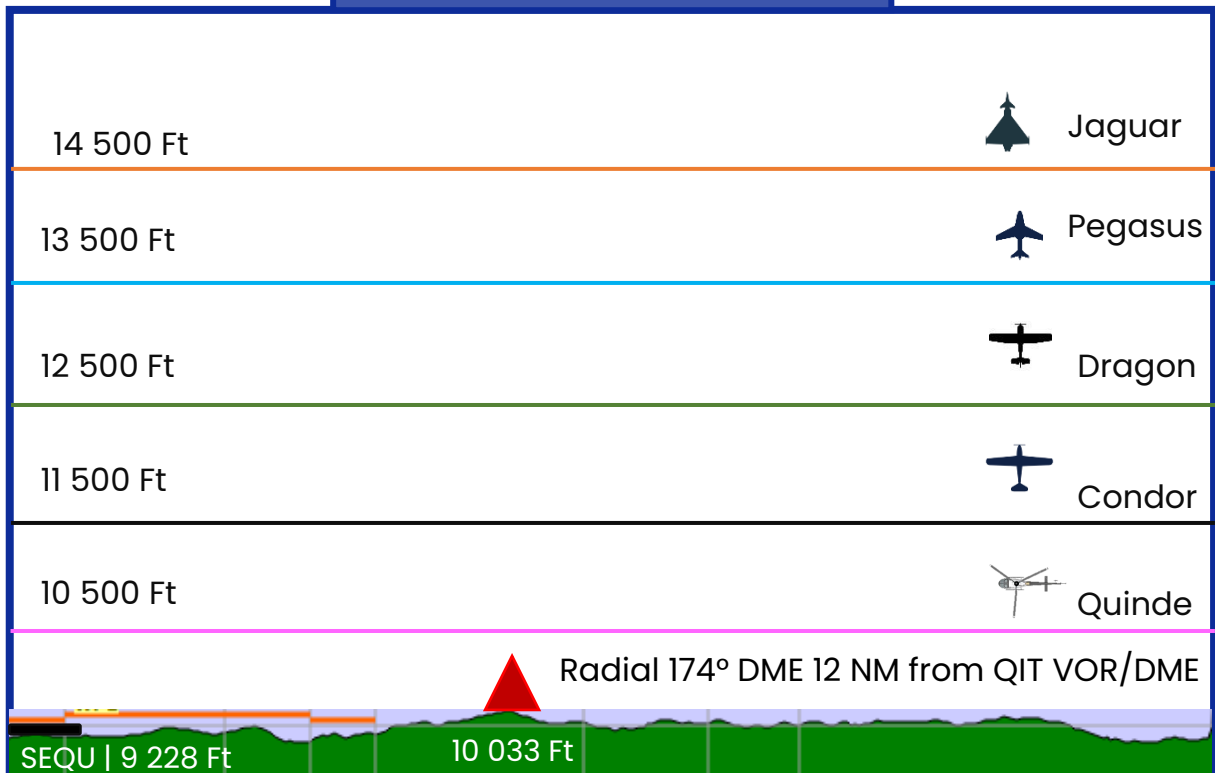




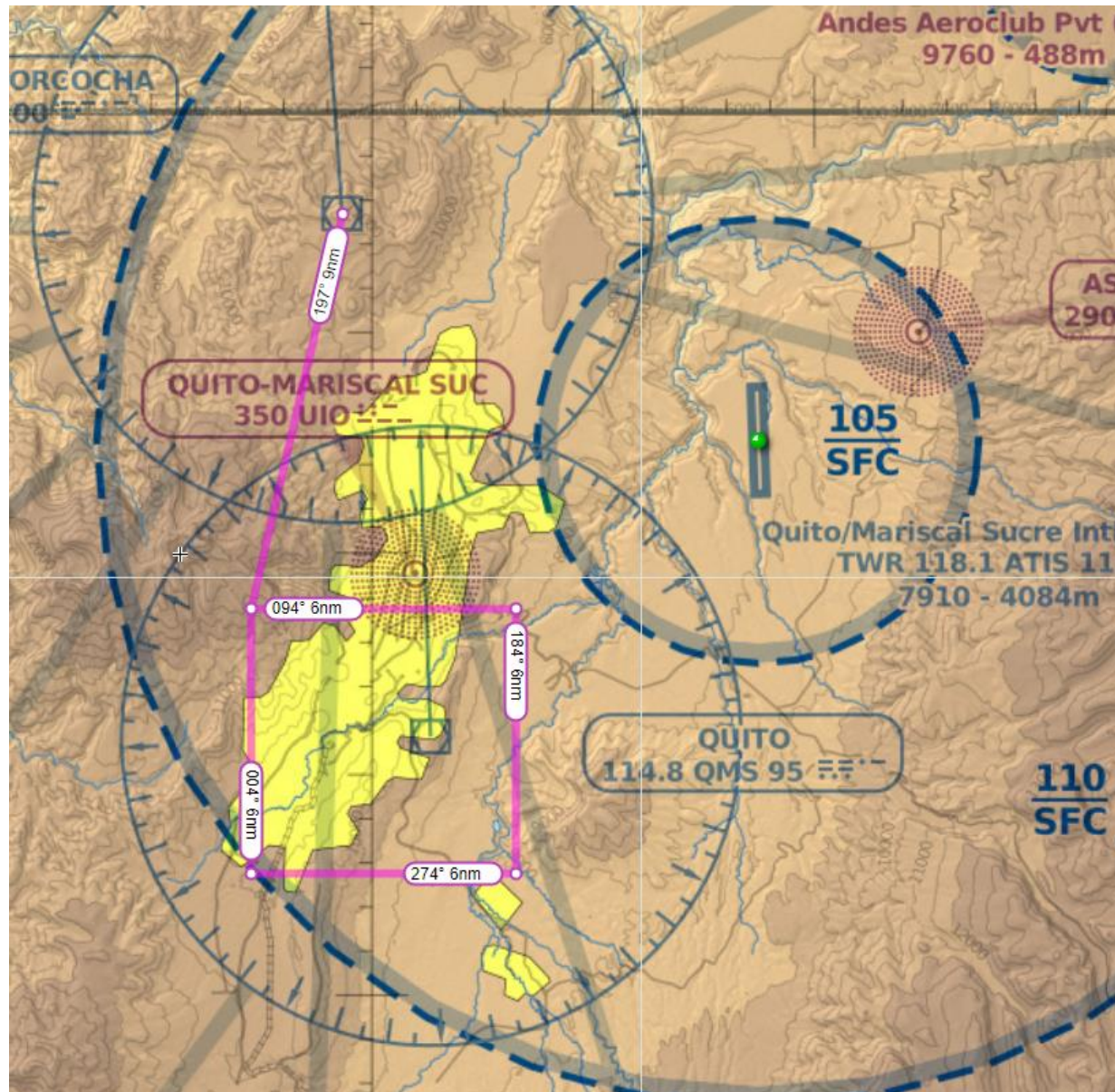


Brief Summary.



HOLDINGS SUMMARY






Intentionally left in blank





ID	LOGO	NAME	AIRCRAFT	# OF PASSES	HOLD ALT	SPEED	ESCORT
		<i>Jaguar</i>	Fighter	4	14 500 Ft	200 Knots	Yes
		<i>Pegasus</i>	Heavy Cargo	5	13 500 Ft	180 Knots	No
		<i>Dragon</i>	EMB-314	5	12 500 Ft	160 Knots	Yes
		<i>Condor</i>	Trainers	5	11 500 Ft	140 Knots	Yes
		<i>Quinde</i>	Helicopters	5	10 500 Ft	120 Knots	No

ID	LOGO	NAME	DEPARTURE TIME (UTC)	# OF SHOOT	ESPECTED TIME (UTC)
		<i>Jaguar</i>	19h50	1	20h20
				2	20h45
				3	21h00
				4	21h40
		<i>Pegasus</i>	20h15	1	20h25
				2 (Jet)	20h45
				3	21h00
				4 (Turbo prop)	21h20
				5	21h25
		<i>Dragon</i>	20h05	1	20h30
				2	20h50
				3	21h00
				4	21h15
				5	21h25



Special Operations

Department



Condor

20h20

1 20h35

2 20h50

3 21h05

4 21h15

5 21h30



Quinde

20h30

1 20h40

2 20h55

3 21h05

4 21h20

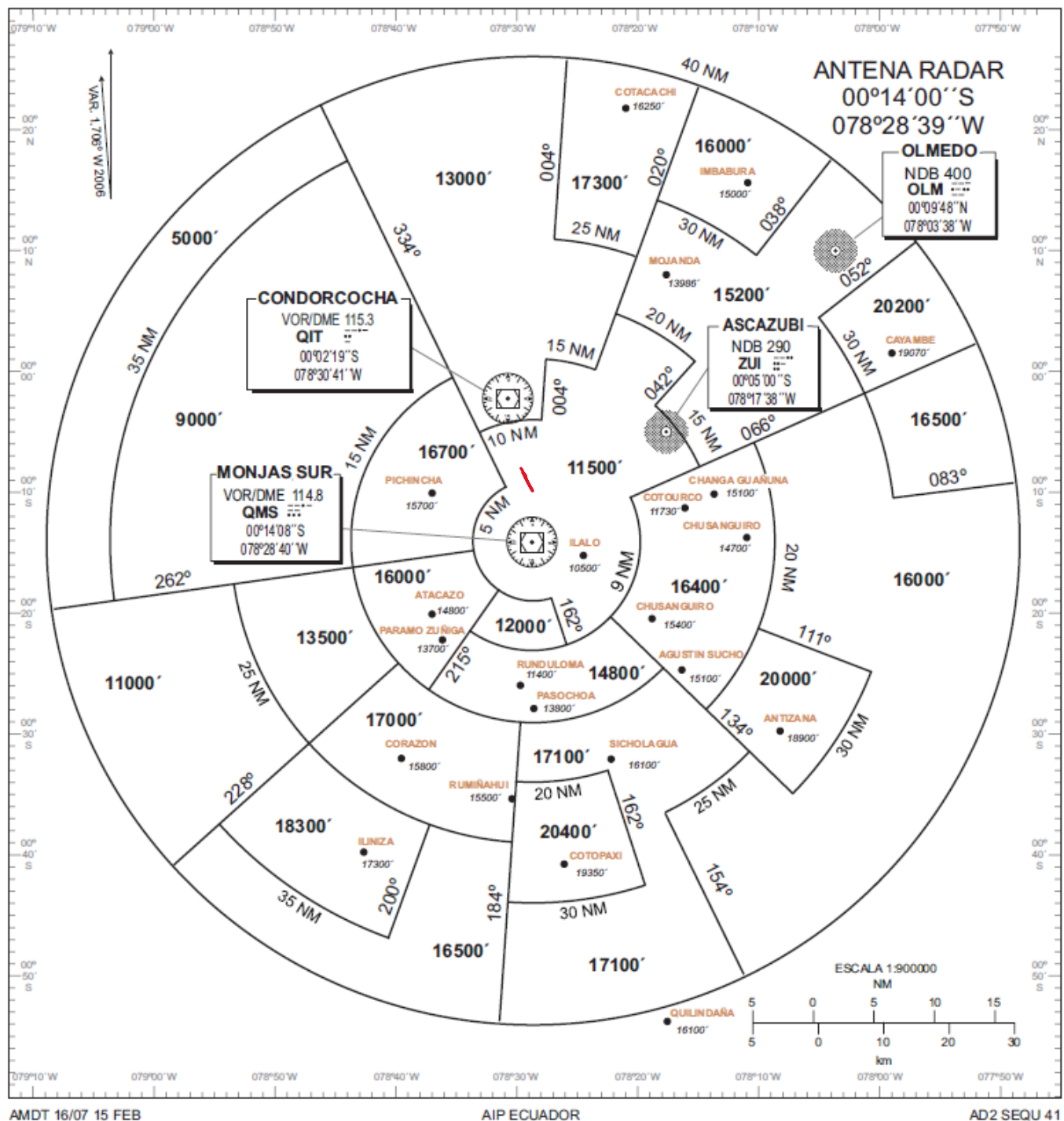
5 21h35



Final Approach Runway 35

Minimum Sector Radar Altitude Chart.

TMA QUITO CARTA DE ALTITUDES MINIMAS DE SECTOR RADAR





4. Airports.

SETA

Taura Air Base

RUNWAY	LENGTH	COURSE	ELEVATION
03	3 066 m	027°	832 Ft
21		207°	834 Ft

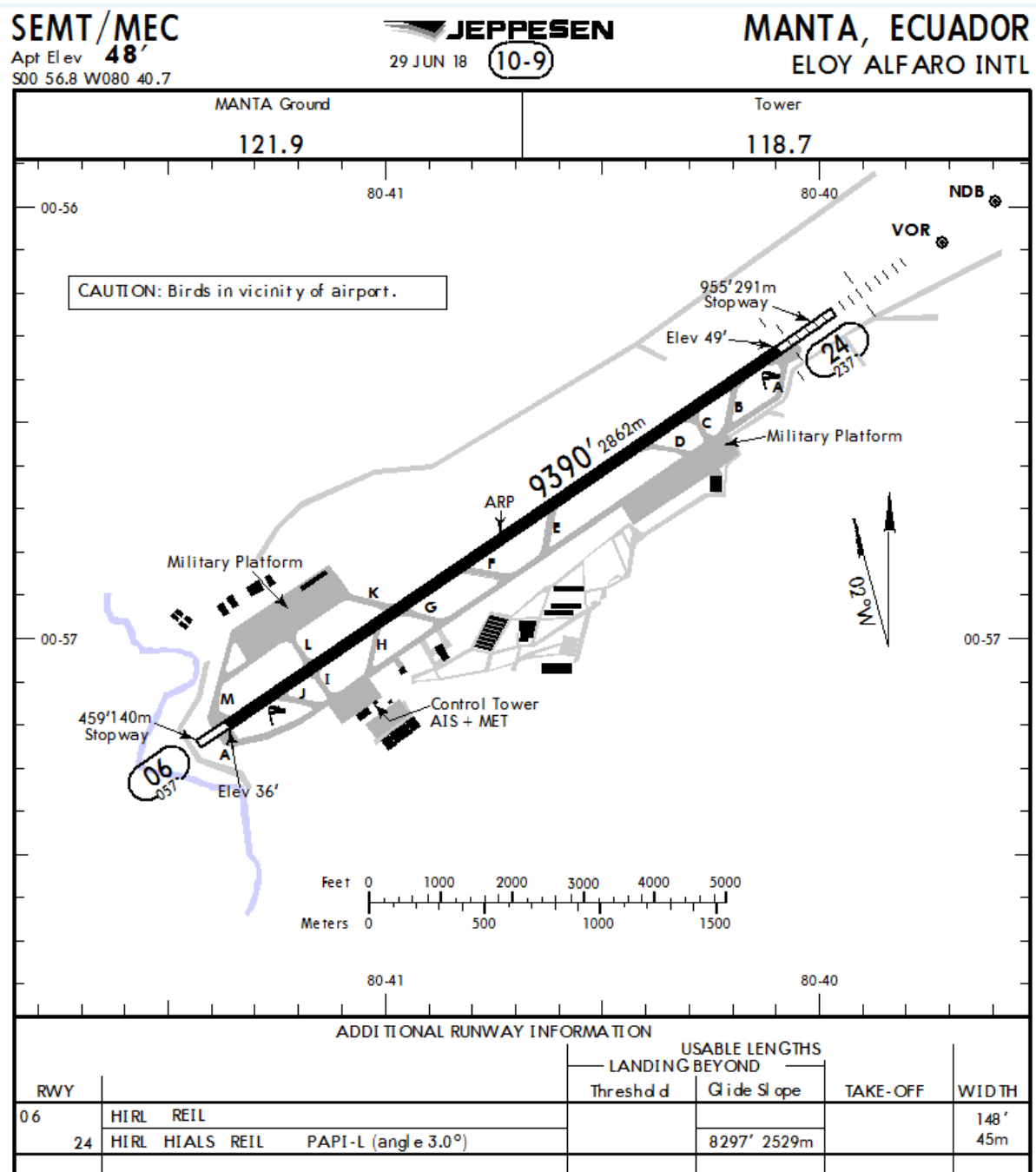




SEMT - MEC

Manta – Gral. Eloy Alfaro International Airport

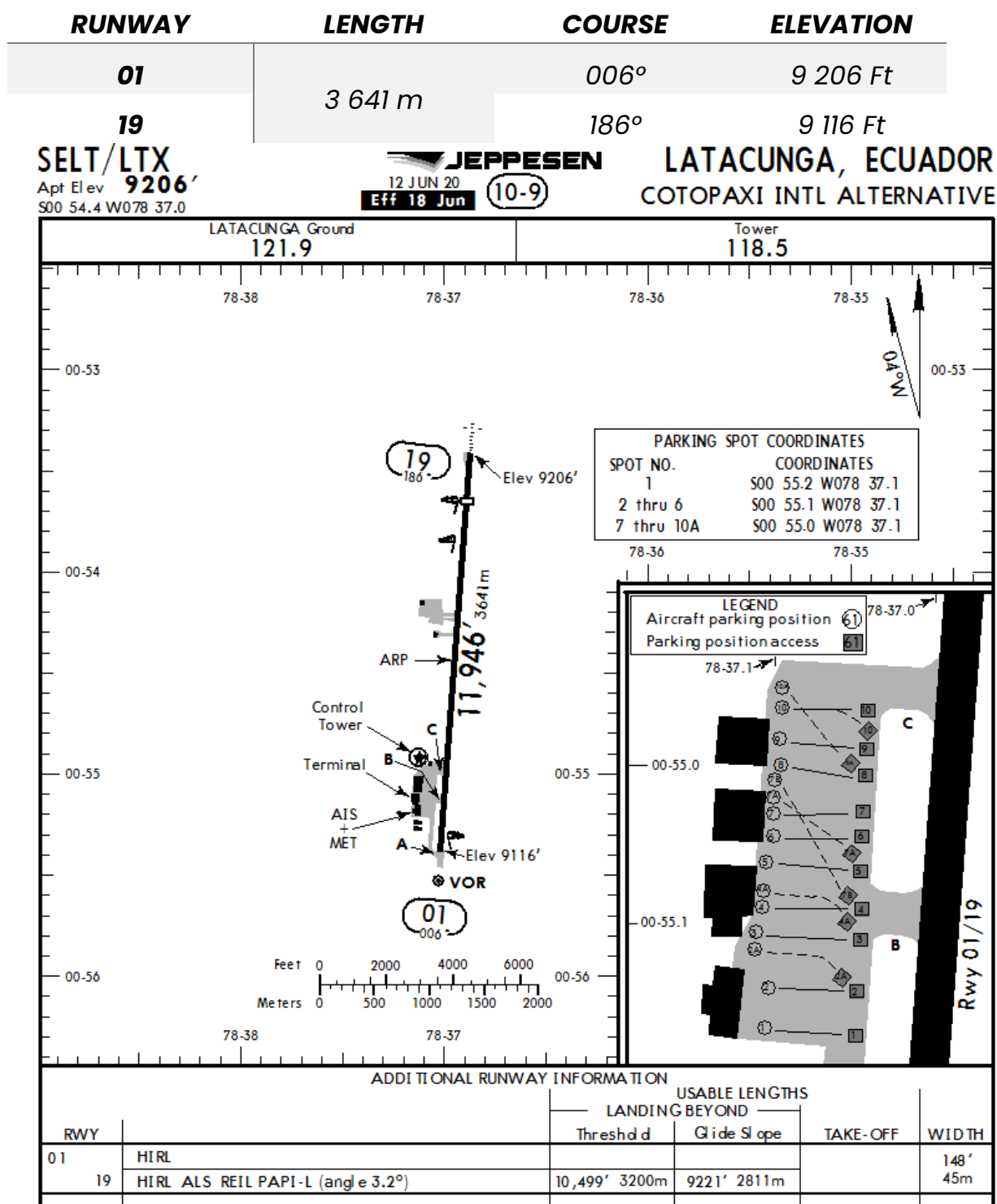
RUNWAY	LENGTH	COURSE	ELEVATION
06	2 862 m	057°	36 Ft
24		237°	49 Ft





SELT - LTX

Latacunga - Cotopaxi International Airport





SEBB

La Balbina Helipad

RUNWAY	LENGTH	COURSE	ELEVATION
02	285 m	020°	8 274 Ft
20		200°	8 271 Ft





SEQU - UIO

Quito - Old Mariscal Sucre International Airport

RUNWAY	LENGTH	COURSE	ELEVATION
17	3 120 m	354°	9 217 Ft
35		354°	9 175 Ft

AIP
ECUADOR

AD 2 SEQU 15
WEF 08 MAY 08

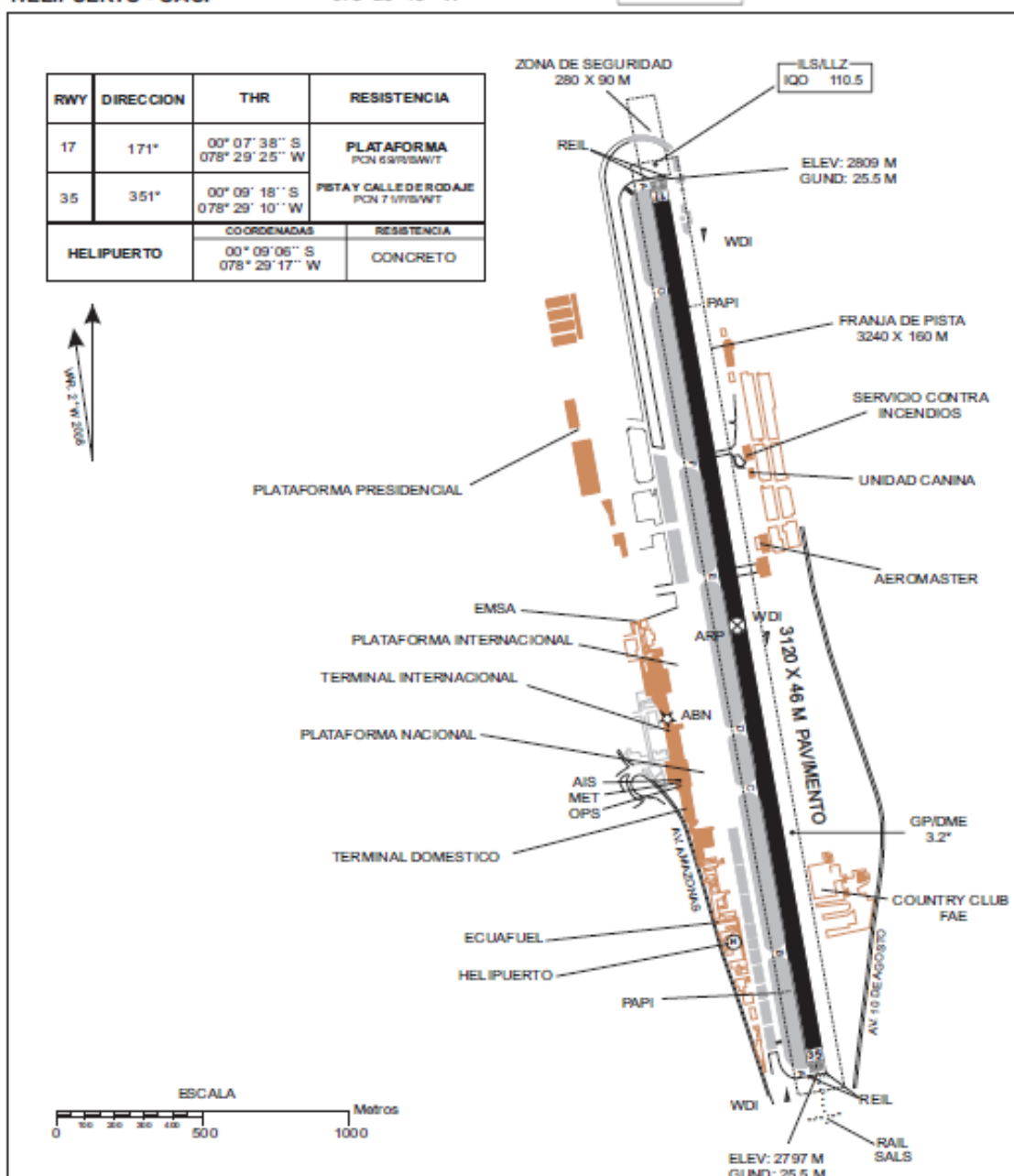
**PLANO DE AERODROMO /
HELIPUERTO - OACI**

00° 08' 28" S
078° 29' 19" W

ELEV: 2813 m

TWR: 118.1
121.9

QUITO/Mariscal Sucre INTL.





Old Quito Mariscal Sucre Airport (Bicentennial Park) Today



Quito in 2 013



5. ATC.

POSITION	CALLSIGN	FREQUENCY
SETA_MIL_TWR	<i>Taura Tower</i>	122.500 MHz
SETA_MIL_APP	<i>Taura Military Control</i>	122.000 MHz
SEMT_TWR	<i>Manta Tower</i>	118.700 MHz
SEMT_APP	<i>Manta Approach</i>	122.700 MHz
SELT_TWR	<i>Latacunga Tower</i>	118.500 MHz
SEQM_APP	<i>Quito Approach</i>	119.700 MHz
SEFG_CTR	<i>Guayaquil Control</i>	128.300 MHz

6. Radio Comms and Nav Aids.

All comms between parts involved will be done at [IVAO HQ-SOD Official Discord Server](#).

According to these squads: "Jaguar", "Dragons", "Pegasus", "Condor", and "Quinde". Pilots must use these channels at Discord for their internal coordination. These channels will be assigned during briefing at event day.

NAVAIDS			
IDENTIFIER	Type	NAME	Frequency
QIT	VOR/D	CONDORCOCHA	115.300 MHz
*QMS		MONJAS SOUTH	114.800 MHz
QSV		SOUTH	116.800 MHz
GYV		GUAYAQUIL	115.900 MHz
LTV		LATACUNGA	117.100 MHz
MNV		MANTA	113.900 MHz
MNT	NDB	MANTA	205 KHz
STD		SANTO DOMINGO	270 KHz
AMB		AMBATO	360 KHz
*UIO		QUITO	350 KHz
*ZUI		ASCAZUBUI	290 KHz



*IQO		QUITO	110.500 MHz
ILA	ILS	LATACUNGA	108.700 MHz
ILM		MANTA	110.100 MHz

* These Nav aids are outdated. Nevertheless, some flight simulators still have it on its database.

7. Ecuadorian Air Force Fleet.

Fixed-Wing

- **Fighters.**
 - ATLAS CHEETAH
 - IAI K-FIR
 - DASSAULT MIRAGE F1 (RETIRED).
 - SEPECAT JAGUAR (RETIRED.)
- **Trainers.**
 - DIAMOND DA-20
 - GROB G-120TP
 - EMBRAER 314 "SUPER TUCANO"
- **Heavy Cargo.**
 - BOEING 727-100/200
 - BOEING 737-200
 - CASA 295
 - DE HAVILLAND CANADA DHC-6 "TWIN OTTER"
 - LOCKHEED C-130 "HERCULES"
- **Surveillance, ZeroG, Air Lab, Med Evac, and Utilities.**
 - GRUMMAN GULFSTREAM II
 - NORTH AMERICAN SABRELINER 40
 - BEECHCRAFT 350 KING AIR
 - PIPER PA-34 SENECA III
- **VIP Transport**
 - EMBRAER LEGACY 600
 - DASSAULT FALCON 7X

Helicopter



- AGUSTAWESTLAND AW119
"KOALA"
- BELL 206 (TH-57)
- BELL 212
- BELL UH-1 "IROQUOIS"

- EUROCOPTER AS350
"ECUREUIL"
- EUROCOPTER AS-555AN
"FENNEC"
- EUROCOPTER EC145

8. Callsign.

You are free to choose whatever callsign, however we recommend using the callsign according formation assigned by the organization.

9. Sceneries.

FSX | P3D

- Taura (SETA) – FSX | P3D (Freeware)
<https://drive.google.com/drive/folders/1I5-pFcgmUHE6595ZOtiPEeeLjSkNNfJY?usp=sharing>
- Manta (SEMT) – FSX|P3D (Freeware)
<http://www.fsxaddons.com/addons/detail/fsxprepar3d-scenery-manta-ecuador/1847/>
- Latacunga (SELT) – FSX|P3D (Freeware)
Not necessary, default.
- Old Quito Airport (SEQU)– FSX|P3D (Freeware)
https://drive.google.com/drive/folders/1R3QArllmaNhzJBYqPX7H_KqVzt0SnVyt?usp=sharing
- Old Quito Airport (SEQU) – FSX|P3D (Payware)
<https://www.aerosoft.com/en/flight-simulation/flight-simulator-x-steam/sceneries/1398/approaching-quito>
- La Balbina (SEBB) – FSX|P3D (Freeware)
<https://drive.google.com/drive/folders/1XNzFNpOABiulpiI8PdYi7WIYSTHyfCJF?usp=sharing>
- Quito Photoreal – FSX|P3D (Freeware)
<http://boliviaescenariosfsxp3d.blogspot.com/2017/09/quito-fotoreal-hd.html>



- Guayaquil Photoreal – FSX|P3D
<http://boliviaescenariosfsxp3d.blogspot.com/2018/07/guayaquil-fotoreal-hd-fly-ecuador.html>
- Ecuador Photoreal – FSX|P3D (Freeware)
<http://www.airhispania.com/phpBB3/viewtopic.php?t=4223>
- For FSX and P3D you can add SEQU to FMC in PMDG
<https://library.avsim.net/eseach.php?CatID=fsxmisc&DLID=189969>

X-Plane 11

- Taura (SETA) – X-Plane 11 (Freeware)
<https://gateway.x-plane.com/airports/SETA/show>
- Manta (SEMT) – X-Plane 11 (Freeware)
<https://gateway.x-plane.com/airports/SEMT/show>
- Manta (SEMT) – X-Plane 11 (Payware)
[https://secure.simmarket.com/ecuavirtual3d-aeropuerto-intercional-eloy-alfaro-x-plane-11-\(zh_15461\).phtml](https://secure.simmarket.com/ecuavirtual3d-aeropuerto-intercional-eloy-alfaro-x-plane-11-(zh_15461).phtml)
- Latacunga (SELT) – X-Plane 11 (Freeware)
<https://gateway.x-plane.com/airports/SELT/show>
- La Balbina (SEBB) – X-Plane (Payware)
[https://secure.simmarket.com/windshear-simulations-la-balbina-army-base-el-chasqui-airstrip-quito-ecuador-\(sebb-sepp\).phtml](https://secure.simmarket.com/windshear-simulations-la-balbina-army-base-el-chasqui-airstrip-quito-ecuador-(sebb-sepp).phtml)
- Google Earth KML
https://drive.google.com/drive/folders/12MorblkpphoDSRS0c8tAM3fAgHh_Samn?usp=sharing

Latacunga Airport is default scenery in FSX and P3D. I suggest downloading photoreal scenery to get a better performance. It is not mandatory. There are 2 options. Quito Photoreal from Bolivia Sceneries cover an area around 24 000 Km² around Quito. In my opinion is one of the best. You must download all the parts. All the scenery file size is near 8 Gb. Same thing for Guayaquil.

On the other hand, you can download Air Hispania South America Part II Andes, Zones 019, 020, 012. They cover all Ecuador territory. There are lowest quality and storage saver (Due to low quality).



Also, I suggest that download a mesh terrain for Ecuador or South America.

10. FPL

It is important that you log in with your call sign assigned. Type of flight is Military – M. Do not forget to change Box 9 Number according position in formation assigned on briefing

11. Charts.

Quito (SEQM), Latacunga (SELT), and Manta (SEMT) charts is available at our divisional website <https://ec.ivao.aero/> in private section. Login is required.

12. Other.

Participant Pilots and ATC must register on SOD Event website to receive their points for Special Operations HQ Awards.

www.sod.ivao.aero/events

For this event is mandatory to send a mail to ec-soc@ivao.aero with your VID + your aircraft intended to flight as soon as you register, because of elaborating formations.

IVAO Ecuador would like to say a special Thank you to Santiago Idarraga Ceballos (598172) for his collaboration with banner event.

Any doubt asks me by mail.

Alexander Duque Paramo

Ecuador – Special Operation Coordinator

ec-soc@ivao.aero

****Intentionally left in blank****