



IVAO
ITALY

GRYPHON 2022 SAR EXERCISE

MASTER PLAN



Intro

Welcome to Gryphon 2022 SAR Exercise!

The main objective for this exercise is to perform a mission in a Search and Rescue environment.

Experience a complex SAR mission in a High Intensity Traffic Zone.

Train yourselves to execute and coordinate all related operations with the RCC/MRCC unit responsible for the SAR operation.

Be ready to be tasked for a certain mission in a short time, and possibly be reassigned to a new task.



Definitions

- CSP (Commence Search Point)
- General Air Traffic (GAT): Civil and military flights conducted in accordance with the rules and the regulations of the ICAO and/or issued by the Italian civil aviation authority.
- IOAT (Instrument OAT), flight missions operating according to operational instrument flight rules.
- Operational Air Traffic (OAT): SO flights that, for military, technical or State reasons do not comply with the provision stated for General Air Traffic (GAT).
- VOAT (Visual OAT), flight missions operating according to operational VFR.

Basic Requirements

Participants are requested to have “basic knowledge” regarding the following items:

- RCC/MRCC station
- SITREP
- Search Pattern Calculation

The event will be carried out simulating the VMC



General Data

Frequencies

FACILITY	CALLSIGN	FREQ.
LICZ_GND	Sigonella Ground	121.955
LICZ_TWR	Sigonella Tower	118.055
LICC_APP	Catania Radar	119.250
LIRR_MIL_CTR	Roma Military	123.225
LIVK_RCC_CTR	Rescue Coordinator	123.100

Nav aids

TYPE	FREQ	COORDINATES
TACAN	SIG CH 53X - 111.60	N 37 23 45.1 - E 14 58 15.5
TACAN	NSY CH 49X - 111.20	N 37 23 01.1 - E 14 55 17.5
NDB	SIG - 412	N 37 23 44.9 - E 14 58 17.5
ILS 10R	I-NSY - 108.15	-

Callsigns

OPERATION	CALLSIGN	FPL
Fixed Wing SAR	LIFExx	LIFExx
Rotorcraft SAR	RESCUExx	RSCUExx

Runways and thresholds coordinates

THRESHOLDS COORDINATES			
10L	N37°24'18.32"-E14°54'34.23"	28R	N37°24'07.20"-E14°56'08.98"
10R	N37°24'11.12"-E14°54'34.98"	28L	N37°24'00.50"-E14°56'05.52"

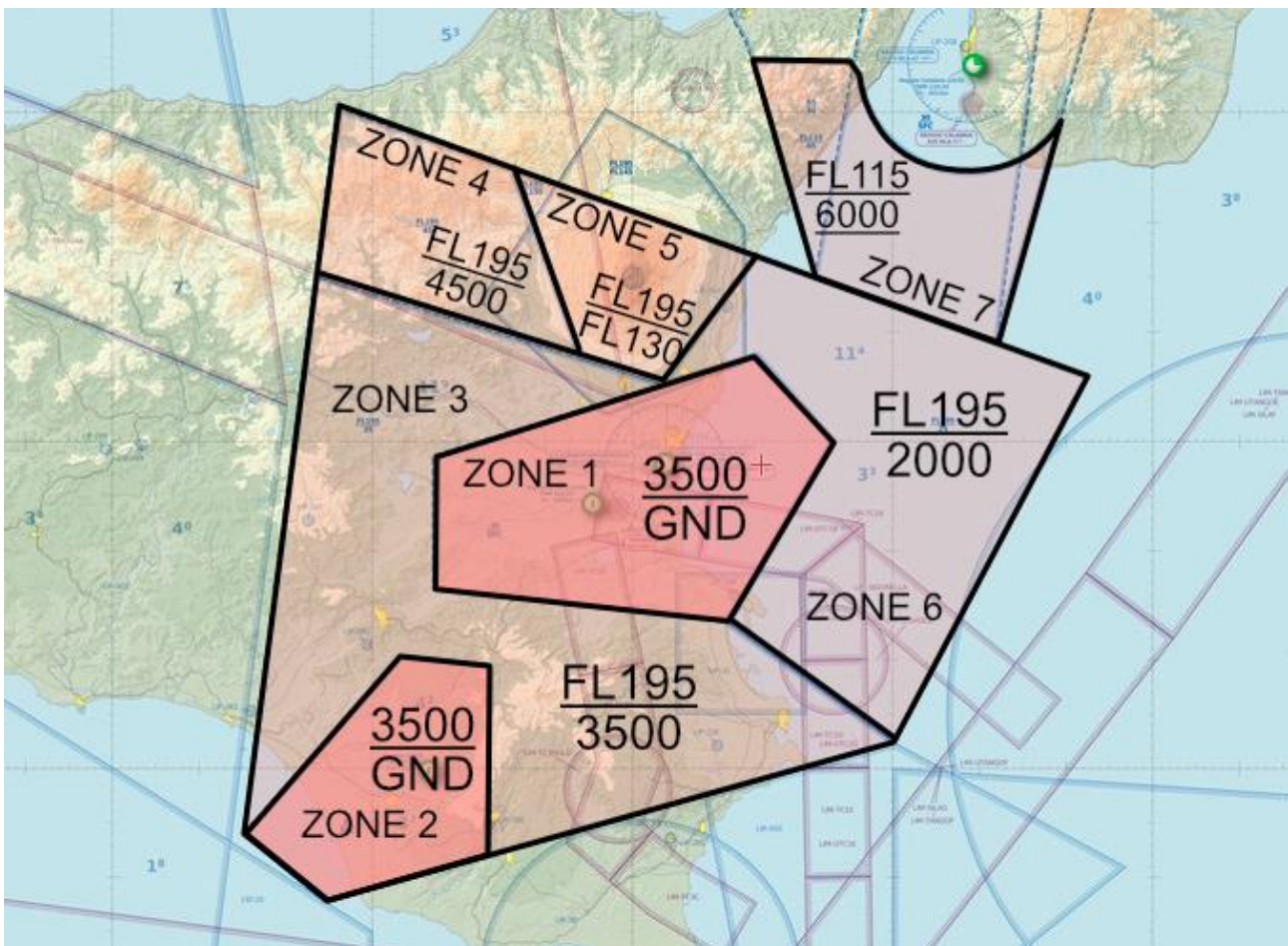


Diversion

AIRPORT	NAVAIDS	BEARING	DISTANCE
LICC Catania	CTF VOR/DME 116.25	057	8 NM
LICT Trapani	TRP TAC – 25X 108.80	283°	120NM
LIBA Amendola	MNL TAC – 99Y 115.25	005°	251NM
LIRM Grazzanise	GRA TAC – 122X 111.65	347°	224NM

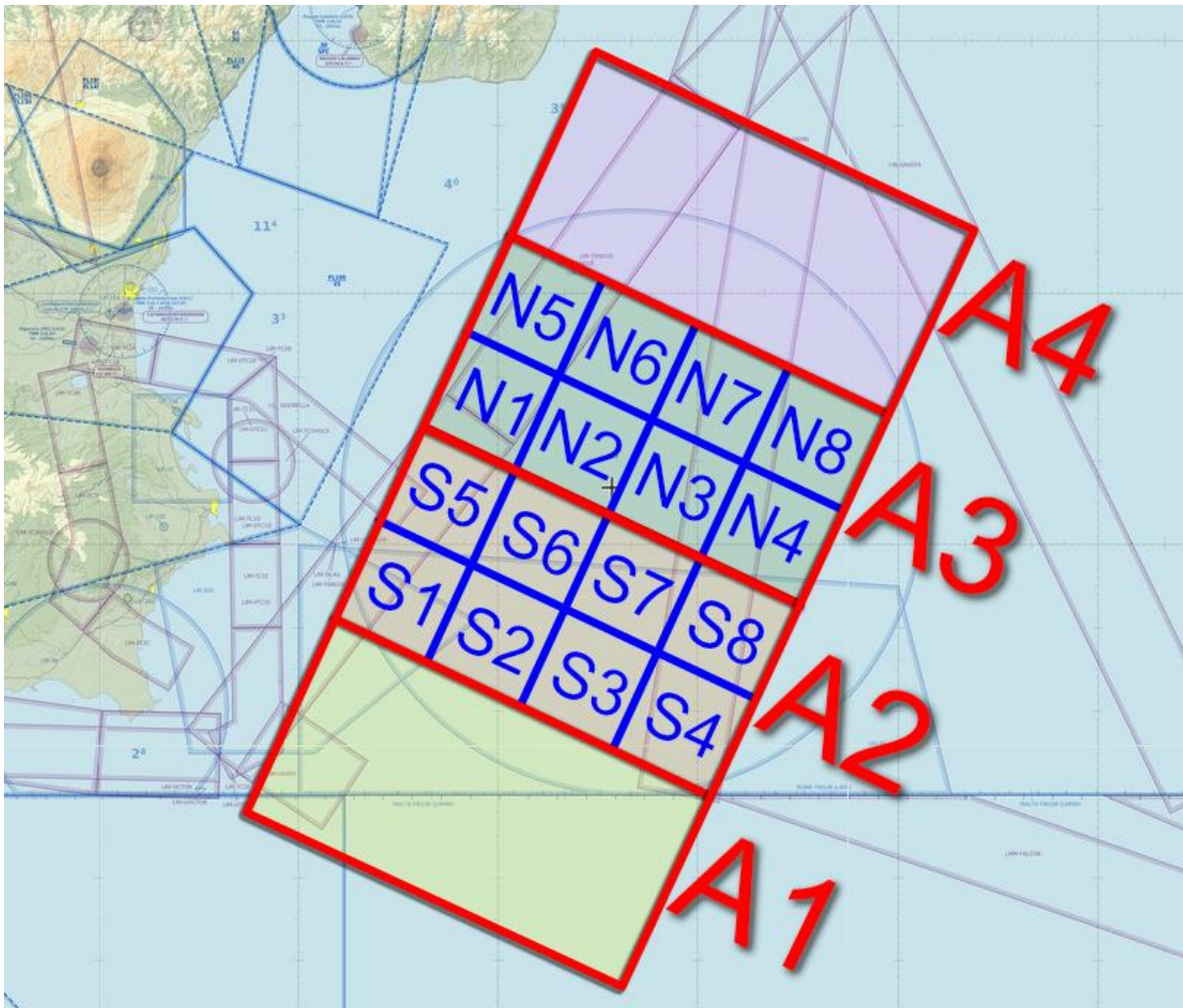
Airspace Data

Catania CTR





Exercise Area “SAR Box”



Areas from A1 to A4 are designed for Fixed Wing activity. Areas from N1/S1 to N8/S8 are designed for rotocraft activity.

Fixed Wing Activity will take place strictly at 1000 ft AMSL if not otherwise coordinated

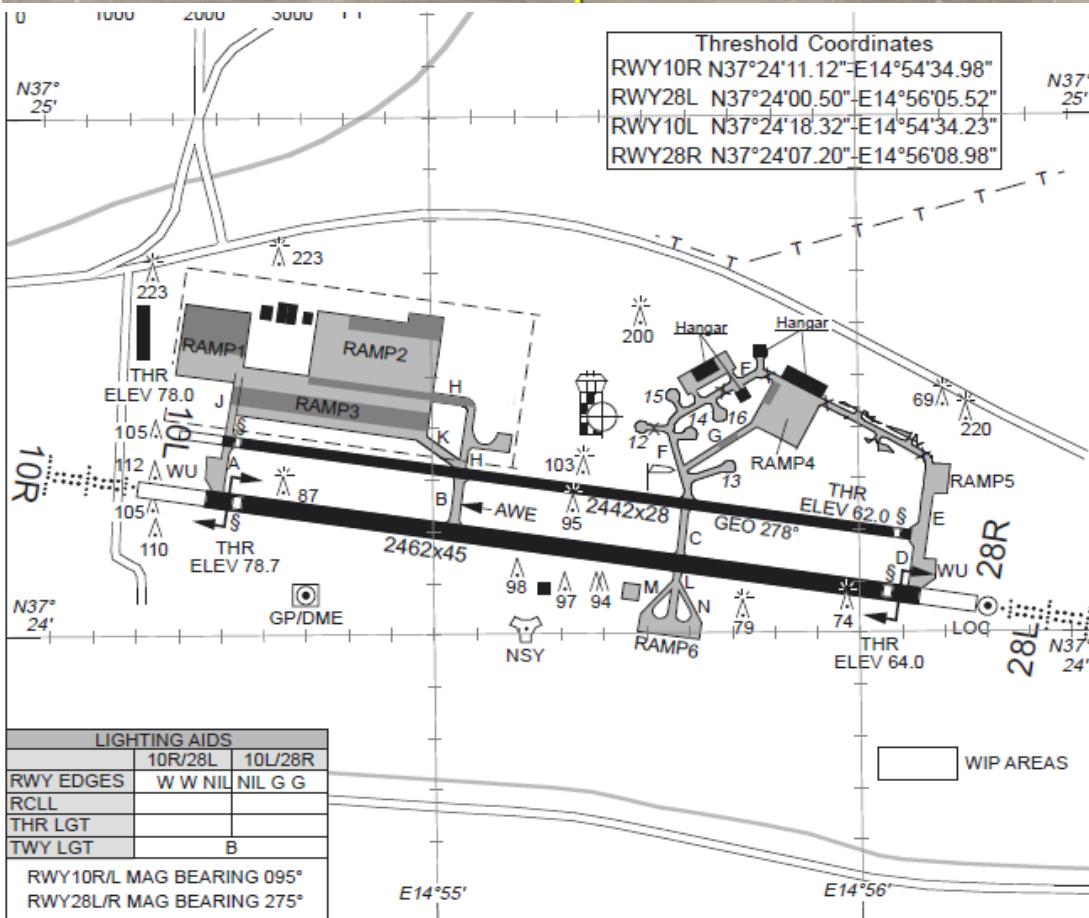
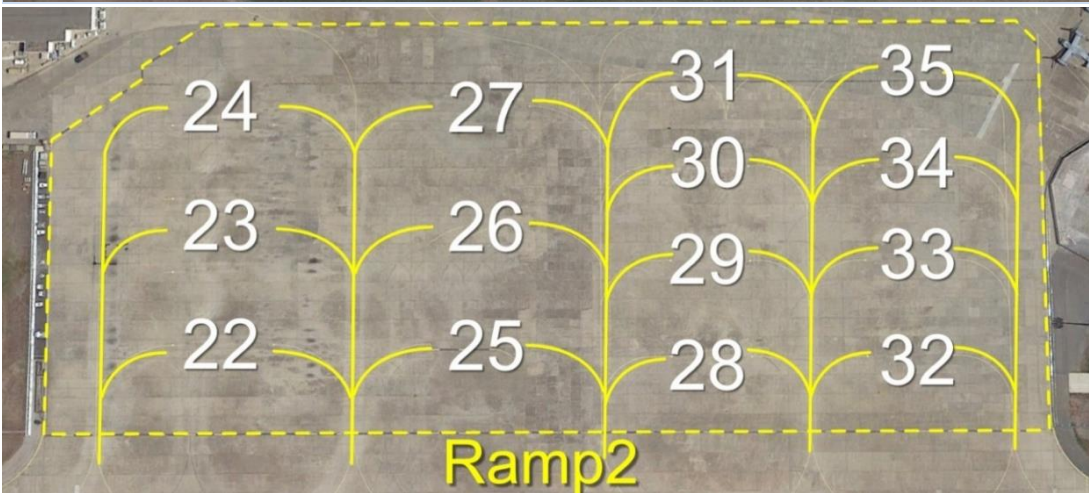
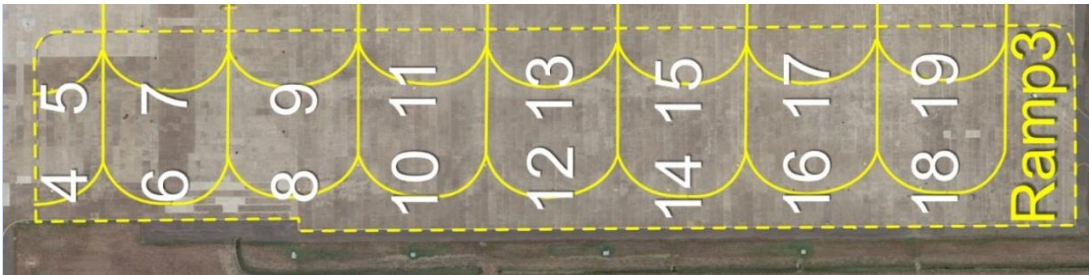
Rotocraft Activity will take place at 500 ft AMSL or below

“SAR BOX” WILL BE ACTIVE FROM SURFACE TO 2000 FT AMSL



Aircraft Parkings

Participants will be accommodated from parking 4 to parking 32





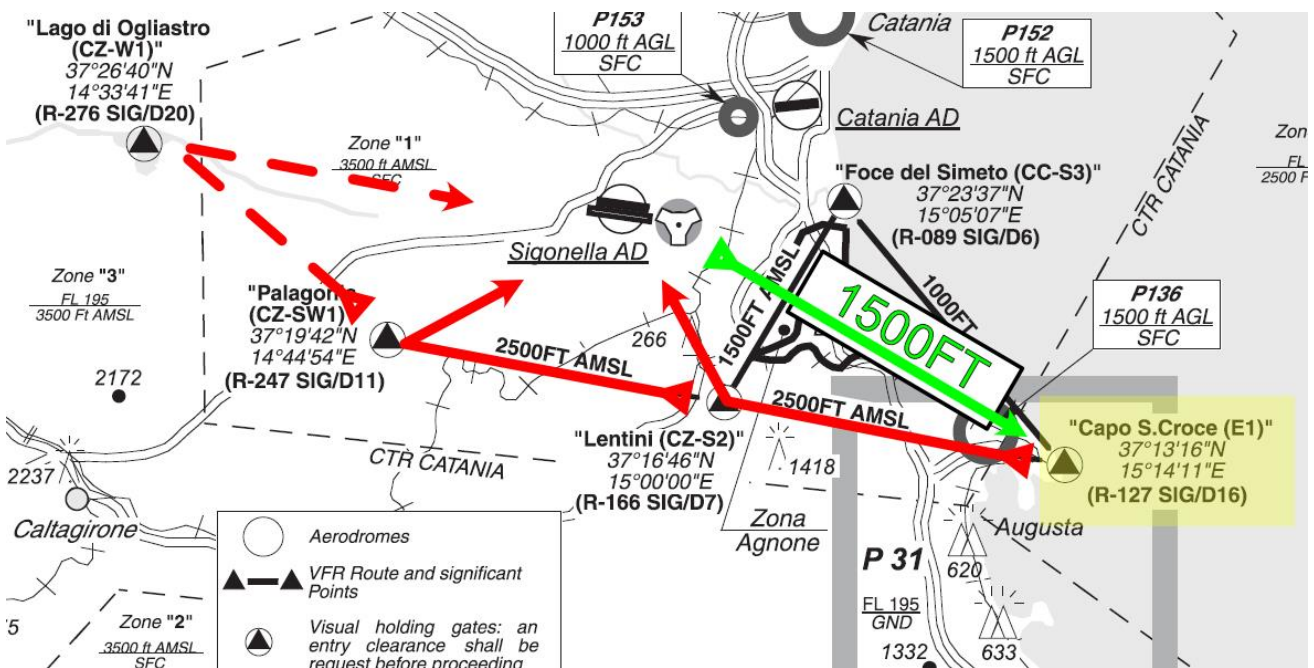
GND Procedures

Aircraft will taxi according to ATC instructions



Departure Procedures

All aircraft/rotorcraft will proceed inbound "Capo Santa Croce" at 1500 FT AMSL



Arrival Procedures

All aircraft/rotorcraft will proceed inbound "Capo Santa Croce (E1)" at 2500FT AMSL then continue via "Lentini CZ-S2)" and, if needed by ATC, via "Palagonia CZ-SW1" and Lago di Ogliastro (CZ-W1) for appropriate recovery.



VRP	COORDINATES	NOTE
CAPO SANTA CROCE (E1)	371316N0151411E	EXIT 1500 FT AMSL (ONLY FOR SAR EXERCISE) ENTRY 2500 FT AMSL
LENTINI (CZ-S2)	371646N0150000E	2500FT
PALAGONIA (CZ-SW1)	371942N0144454E	2500FT
FOCE DEL SIMETO (CC-S3)	372337N0150507E	1000 AMSL MAX
LAGO DI OGLIASTRO (CZ-W1)	372640N0143341E	3500 AMSL MAX

Event Scenario



A Military Transport Aircraft involved in a low level activity south of Sicily has launched a Mayday for a major problem.

No further communications about their position and status are available since last call. The MRCC has started operations to organize a SAR mission in the area in order to find the Airplane and to rescue people aboard.



Missions Description

Fixed Wing Sar

As a fixed wing aircraft your task is to join the assigned search area and to start searching for survivors using a parallel search pattern starting from your CSP. You will be coordinated by RCC/MRCC agency in the area.

CSP	LAT/LONG
CSP AREA 1	362745N0152605E
CSP AREA 2	365029N0153912E
CSP AREA 3	371315N0155216E
CSP AREA 4	373557N0160523E

Search Tracks Details

TRACK	LENGHT	WIDTH	ALTITUDE
111°	45 NM	5,5 NM	1000 FT AMSL

(Data are not only harmonized with search object but are modified in order to maintain training areas)

Rotorcraft Sar

As a Rotorcraft your main task is to locate and rescue survivors, for this mission you will join the assigned search area and you will choose between PARALLEL SEARCH OR EXPANDING SQUARE.

Search remaining within area boundaries. You will be coordinated by RCC/MRCC agency in the area.

BOX	CENTER LAT/LONG	BOX	CENTER LOT/LONG
N1	371612N0155909E	S1	365319N0154533E
N2	371041N0161343E	S2	364803N0155953E
N3	370518N0162817E	S3	364233N0161421E
N4	365955N0164303E	S4	363712N0162855E
N5	371041N0164954E	S5	364837N0163514E
N6	371626N0163508E	S6	365348N0162047E
N7	372127N0162053E	S7	365904N0160652E
N8	372712N0160613E	S8	370434N0155139E



Event Flow

SAR ASSETS	BRIEFING SAR
	ARRIVAL ON SCENE
	START OF SAR OPS AND (SITREP) AS PLANNED
	POSSIBLE RESCUE OF SURVIVORS
	END OF SAR ACTIVITY
	SAR RECOVERY TO BASE
	DEBRIEFING SAR

Mission Timeline

TIME	ITEMS
1430z	Briefing On Discord Channel
1500z	Start Of Operations
1745z	End Of Operations
1750z	Start Of Debriefing On Discord Channel
1810z	End Of Debriefing On Discord Channel

Registration Criteria

FIXED WING Max 4 Pilots available

You will be asked to insert:

- your *Flight Sim*,
- your *Aircraft type*

ROTARY WING Max 16 Pilots available

You will be asked to insert:

- your *Flight Sim*,
- your *Aircraft type*



SITREP Format

SAR SITREP			
MESSAGE PRIORITY (DISTRESS/URGENCY ECC)			
DATE		HOUR UTC	
FROM		TO	
SITEREP N°			
IDENTIFICATION OF THE UNIT (NAME, CALLSIGN, FLAG)			
POSITION (LAT/LONG)			
SITUATION			
NUMBER OF PEOPLE AT RISK			
ASSISTANCE REQUIRED			
OTHER			



Misc

Regulations And Charts

You need to Login here <https://ivao.it/> (NO registration required), before downloading any document.

- Regulations <https://ivao.it/special-operation/regulations-and-charts/>
- Charts <https://quickoverview.ivao.it/charts/>

Sceneries Download

- Available few days before the event.

Real Documentation

- [Link](#) (Icao Iamsar)

JOINFS Server

- Download link: <https://pmem.uk/joinfs/joinfs.msi>
- Manual: https://pmem.uk/joinfs/joinfs_v1-1-4-stable_guide.pdf

Contacts

- For any doubt contact it-specialops@ivao.aero