



ITALY SO DEPARTMENT

LIRP Pisa Airport RFE

BRIEFING

February 9th 2019



WWW.IVAO.IT



1. INTRO

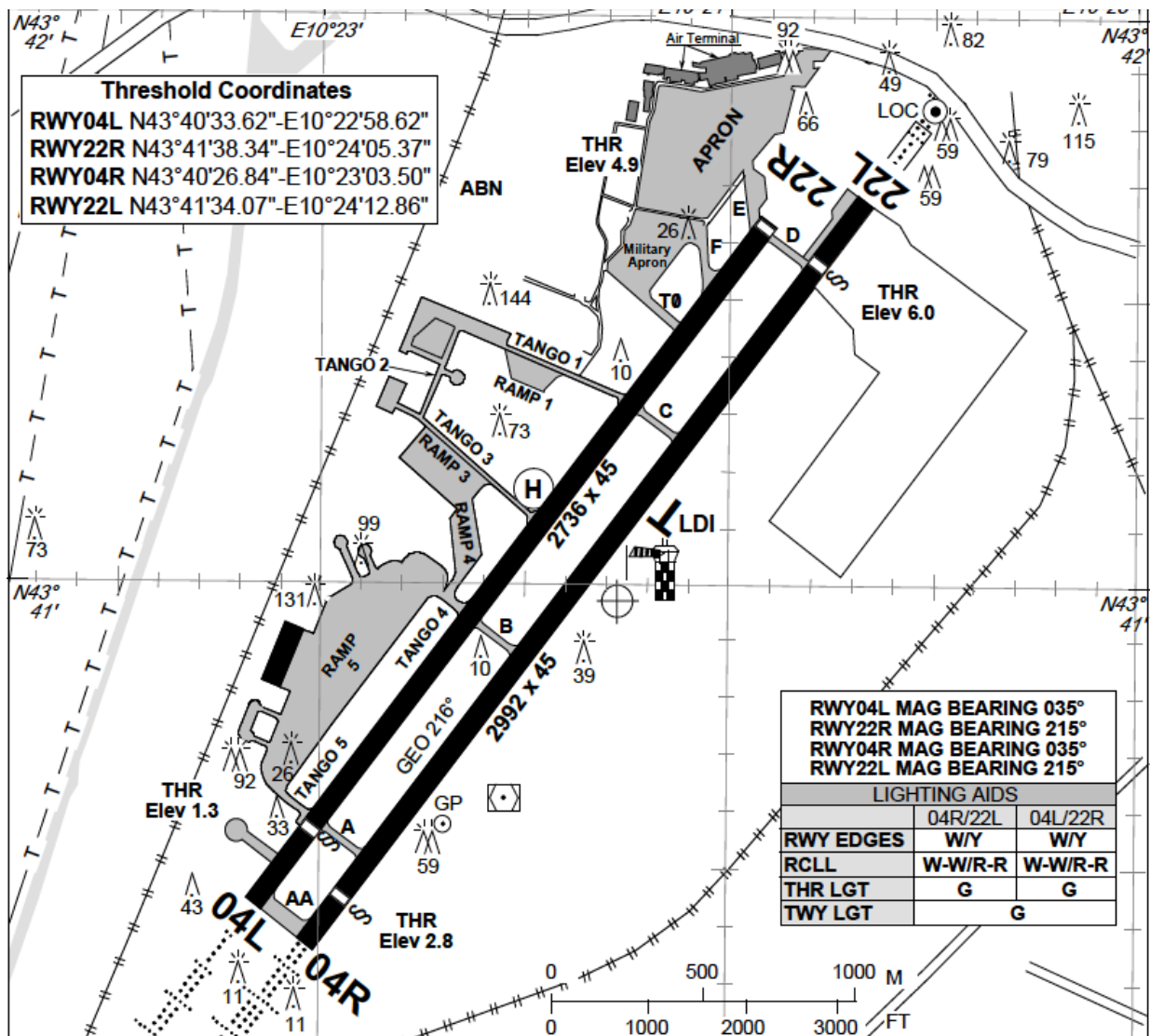
The purpose of this event is to simulate a real day of operations at this particular airport that accommodates both civilian and military traffic.

Pisa San Giusto is the most popular airport of Tuscany and the 10th most busiest airport in Italy. It hosts the 46th airlift brigade with C130J and C27J aircrafts plus 2 groups of "Police Service" Helicopters (Carabinieri and Guardia di Finanza).

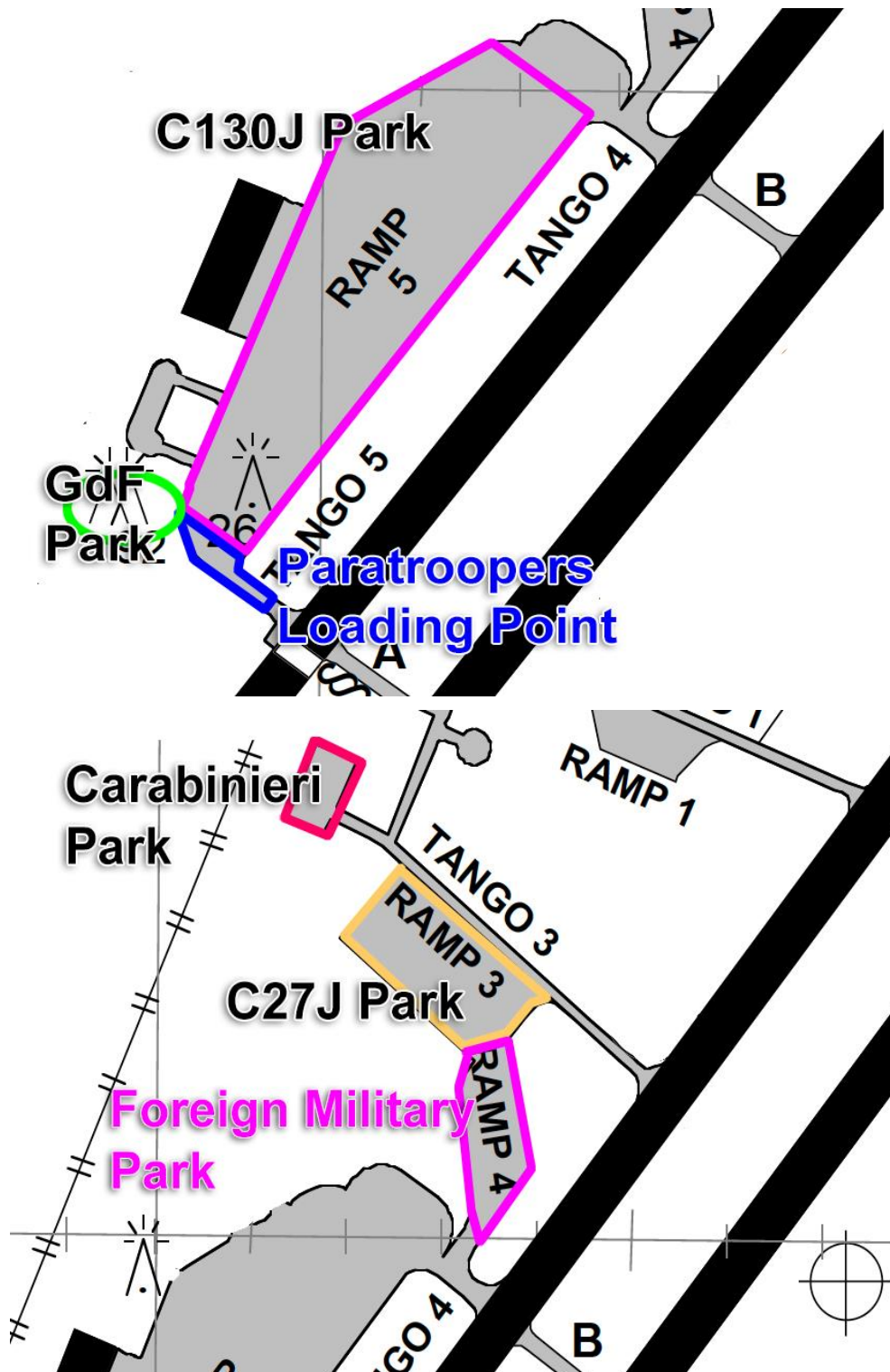
SpecialOps Pilots that want to participate need to consider of planning one of these types of missions:

- Cargo transport or Ferry Flight
- AAR with KC130;
- Airdrops with both aiplanes and helicopters;
- HEMS;
- Police Helicopters (Buster Air Traffic);
- VIP transport;
- Navigation (instrumental, low level etc), diversion and approach practice.

2. AIRPORT LAYOUT



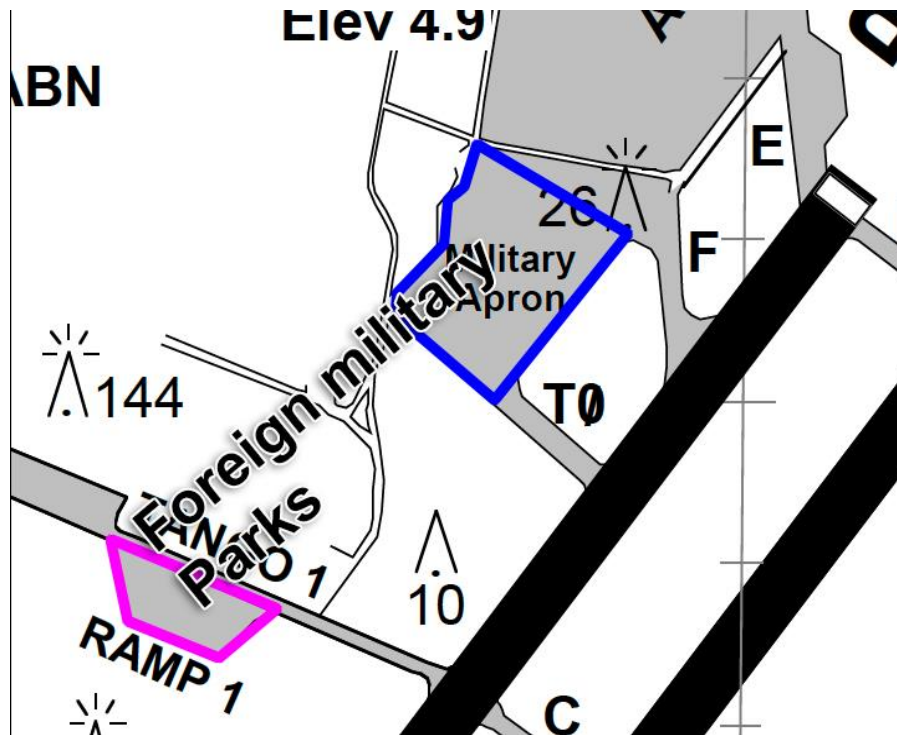
Hot Spots



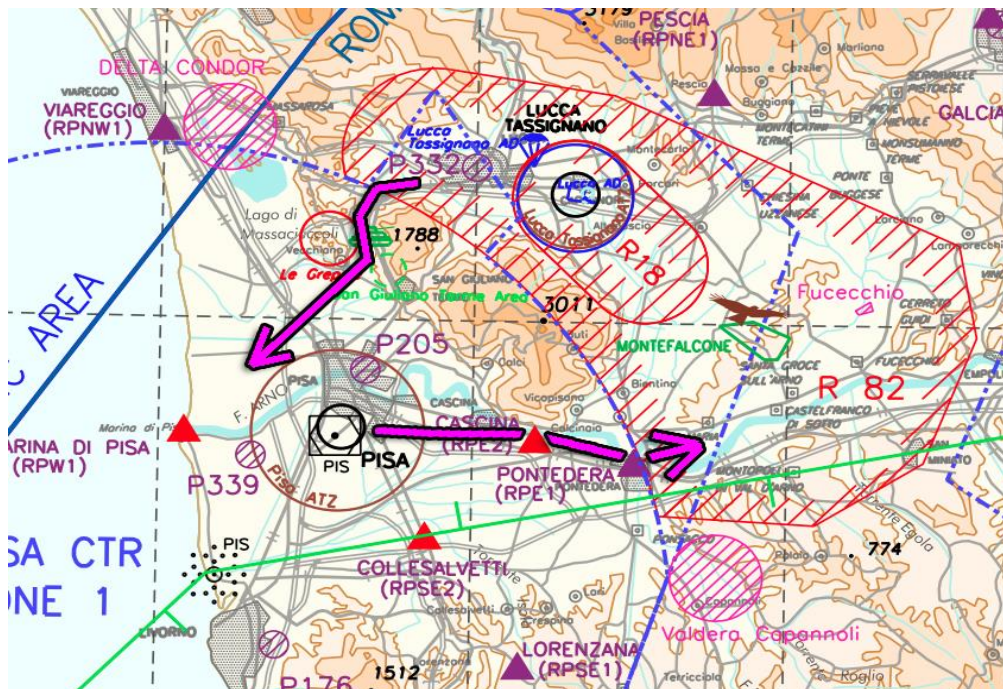
-Ramp5: main ramp for C130J

-Ramp3: main ramp for C27J

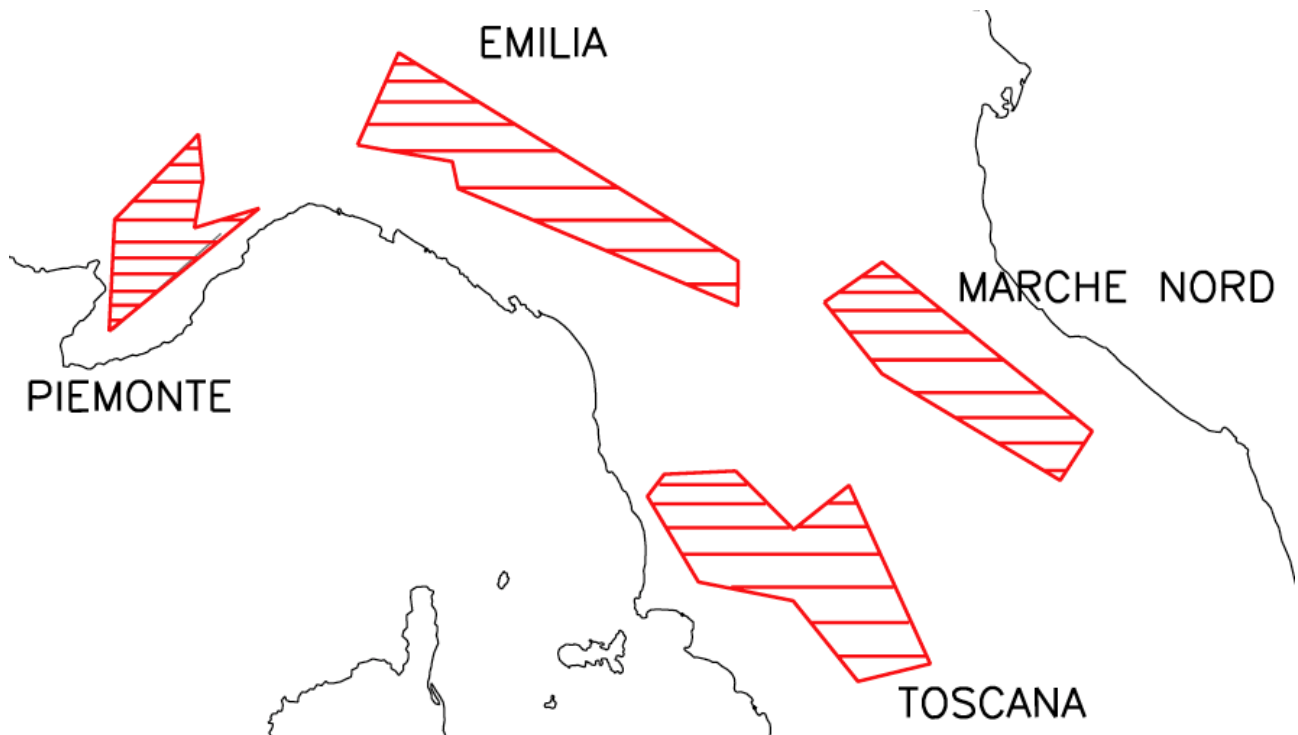
-Ramp4,Ramp1 and Military Apron used by Other military Aircraft



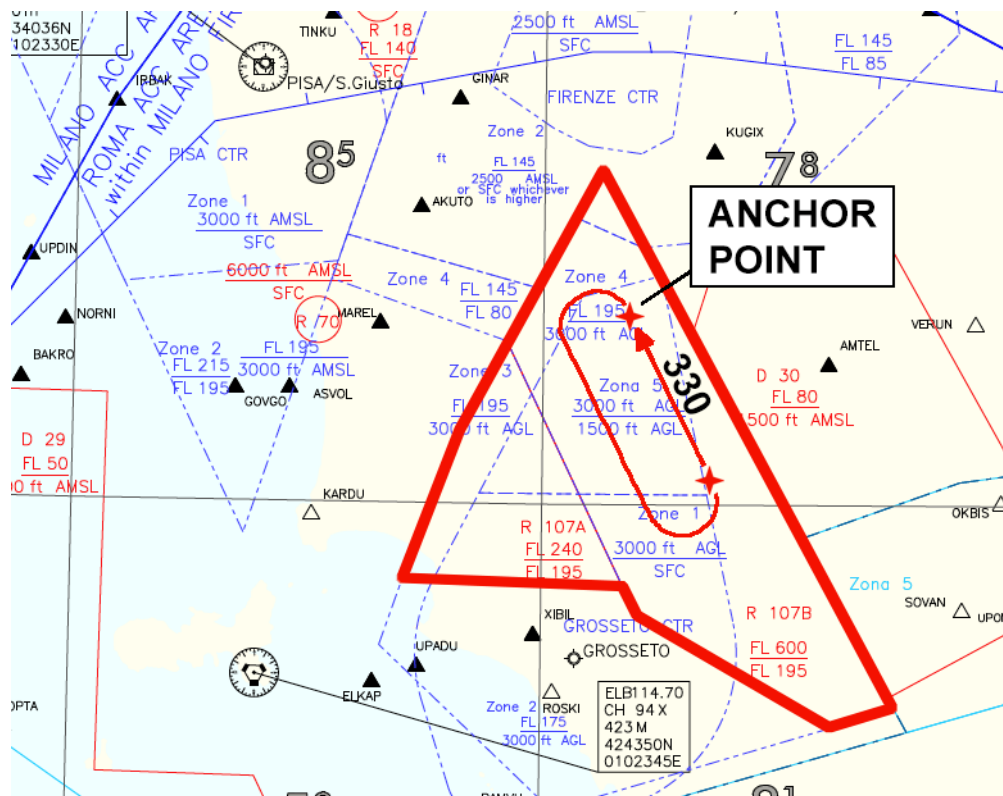
ENTRY/EXIT ROUTES for R18/R82



LOW LEVEL TACTICAL AREAS



AAR OPS (LI-R107 A/B)



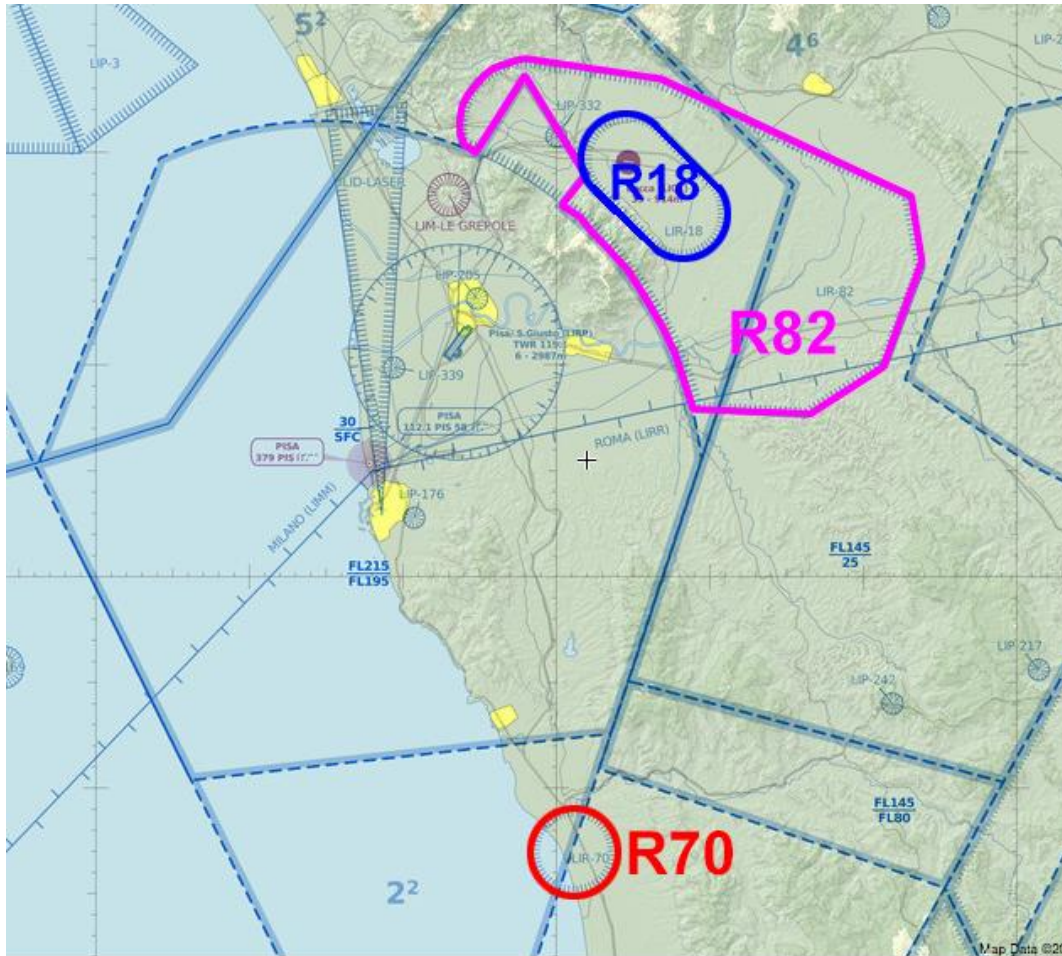
Operations and Restrictions

- Paratroopers Loading point at T5. during operations, T5 is inhibited;
- Only 1 Pushback at the time on civil apron;
- Taxi to/from GA Apron is subject to Pushback operations;
- T2 not available. Only for towed aircrafts;
- Airtaxi from "Carabinieri Park" with caution when Military cargo on Ramp3 are operating with engines running;
- Airtaxi from "GdF Park" forbidden when T5 used as "Loading Point" for Paratroopers;
- Entry Route to R18/R82: via Cascina (RPE2) - Pontedera (RPE1);
- Exit Route from R18/R82: via west abeam of Lucca city – Marina di Pisa (RPW1);
- Dropping altitude: Low -1500ft- and High -FL100- (R18 only);
- Low Level tactical areas rules and usage: ref AIP ENR 6-2-2-6;
- RNAV GNSS 22 approach not available when R18 is active. Approaches for Rwy22 will be performed via ILS04R+circling22
- AAR Operations within R107 at FL200 or above;
- AAR Pattern between N043151466 E011150981 (Anchor Point) and N042573130 E011274290 – inbound track 330° - 20NM.

3. DROP ZONES

ZONE	Limits
R18 - Altopascio	GND/FL140
R82 - Pescia	1000ft /2000ft
R70 – Cecina	GND/6000ft

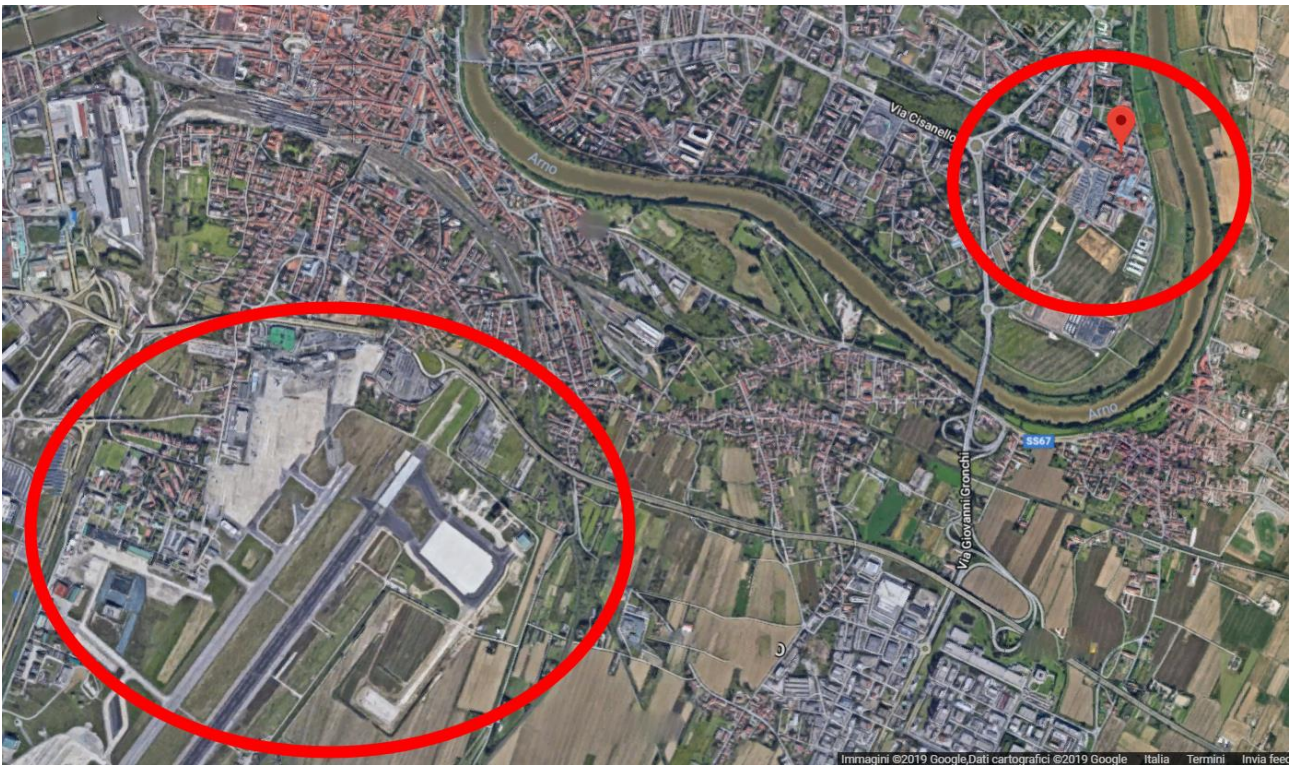
The Zones are activated on tactical basis by Pisa APP. Traffic transit is forbidden.



4. ALTERNATES

AIRPORT	RWY	NAVAID	Procedures	ATC Freq.
LIRS Grosseto	03-21	GRO VOR (109.85) GRO TAC (35Y- 109.85)	VOR 03 TACAN 03	APP 124.525 TWR 128.1
LIMJ Genova	29-11	SES (108.60)	ILS 29 (109.30)	APP 119.6 TWR 118.6
LIPE Bologna	12-30	BOA (117.10)	ILS 12 (108.9) ILS 30 (109.75)	APP 133.775 TWR 120.8
LIPC Cervia MIL	11-29	CEV TAC (83X - 113.60)	ILS 11 (110.35)	(BOLOGNA APP) TWR 124.900
LIRQ Firenze	05-23	PRT (112.50)	ILS 05 (110.30)	APP 125.825 TWR 118.3
LIRZ Perugia	01-19	PRU (109.40)	ILS 01 (110.95)	APP 125.6 TWR 118.1

5. HEMS Ops to/from Cisanello Hospital



Due to the proximity of the Hospital, HEMS operations need particular attention by the APP and TWR controller, specially during circling for RWY 22 of IFR traffic.

6. Regulation and charts links

-Virtual Italian MilAIP & vPIV/Flip (Flight information publications) charts can be found here:

<https://ivao.it/special-operation/regulations-and-charts/?lang=en>

(for charts of LIRP - TACAN PROCEDURES and military alternates)

-Real Italian Civil AIP can be found here (free registration is required):

<https://www.enav.it/sites/private/it/ServiziOnline/AIP.html>

7. SPECIAL OPS PARTICIPANTS TIME TABLE

Fill your application here <https://sod.ivao.aero/events>

Pilots can pick a Slot and decide if that given time is an ETA or an ETD and decide their:

- Type of flight/mission task
- Flight Rules (IFR/VFR)
- GAT/OAT rules
- Callsing
- Route

NAME	TIME(UTC)
SLOT01	1600
SLOT02	1613
SLOT03	1616
SLOT04	1623
SLOT05	1627
SLOT06	1640
SLOT07	1647
SLOT08	1655
SLOT09	1707
SLOT10	1713
SLOT11	1718
SLOT12	1721
SLOT13	1731
SLOT14	1736
SLOT15	1740
SLOT16	1743
SLOT17	1751
SLOT18	1757
SLOT19	1807
SLOT20	1812
SLOT21	1822
SLOT22	1833

Fill **RMK/SLOTXX LIRP RFE** on FPL item 18

Italian participants are kindly invited of flying a real callsing by choosing it from here

<https://ivao.it/special-operation/callsign-radio/>

Foreign participants can use their own GAT/OAT national callsing.

8. CIVIL PARTICIPANTS TIME TABLE

Fill you participation here <https://lirp.ivao.it/landingpage/>