



ITALY SO DEPARTMENT

VJOINT STARS 2019

GENERAL BRIEFING

May 5th 2019



WWW.IVAO.IT

1. TASKS AND OBJECTIVES

Our main goal for VJOINT STARS 2019 exercise is to reproduce a complex scenario in order to work in conjunction with other Nations. During the exercise pilots will be able to choose their mission profile with a wide choice depending on their role. The main ops will be performed with Air Interdiction and SEAD missions for strike packages, Combat Air Patrol for fighters, Air to Air Refueling for tanker assets and Search and Rescue for Helicopters. All pilots will be able to increase their experience and skills working in an international operational environment and share experiences with foreign pilots.

Mission profiles allowed:

- AIR INTERDICTION
- SUPPRESSION OF ENEMY AIR DEFENCE
- COMBAT AIR PATROL
- AIR TO AIR REFUELING
- SEARCH AND RESCUE

2. MISSION TIMELINE

1. 1800Z BRIEFING ON DISCORD CHANNEL
2. 1830Z START OF OPERATIONS
3. 2020Z END OF OPERATIONS
4. 2030Z START OF DEBRIEFING ON DISCORD CHANNEL
5. 2100Z END OF DEBRIEFING ON DISCORD CHANNEL

Departure schedule will be published ASAP soon after participations will be closed.

3. EXERCISE AREAS

WARNING: The Areas described below have been made SPECIFICALLY for JointStar 2019. Validity 5 MAY 2019.

The areas have to be considered as **TRA** and will be activated on tactical basis. Penetration of civilian flights is permitted only by applying 2000ft separation from the block of levels effectively requested by pilots.

AREA "STAR1" LIMITS: (GND/FL300)

It's basically the union of the zones: D602+D603+D604+D605+R601B extended vertically.

Line joining the following points:

N0390722E0104243-N0391043E0095855-N0392600E0093800-N0393800E0093800
N0395440E0094420-N0400520E0094645-N0402627E0095136-N0403400E0100041
N0403851E0103856-N0404341E0111855-N0395139E0114521-N0394757E0114423
N0390310E0113250-N0390722E0104243

AREA "STAR2" LIMITS: (FL220/FL250)

It's basically the D84 with limited block of levels. Used for AAR

Line joining the following points:

N0392841E0125422-N0392145E0122130-N0395518E0120354-N0403714E0120715
N0403700E0123740-N0402700E0124916-N0392841E0125422

AREA "STAR3" LIMITS: (SFC/FL180)

It's basically the union of the zones: R601A+R601C extended vertically.

Line joining the following points:

N0395440E0094420-N0393800E0093800-N0392600E0093800-N0393427E0092435
N0394149E0091319-N0394941E0091559-N0395655E0091936-N0400000E0092500
N0400520E0094645-N0395440E0094420

4. TRANSIT CORRIDORS

Entry/Exit corridors to/from Play Areas

TC "JOINTSTAR NORTH DEPARTURE"

Used by aircraft to join "STAR1"

VOAT: after departure, proceed to RAMEN DCT LULIX

IOAT: follow RAMEN5C/5D ([refer to vPIV/FLIP](#)) DCT LULIX



TC "JOINTSTAR SOUTH DEPARTURE"

Used by aircraft to join "STAR1 or STAR3"

VOAT: after departure, when able turn right to point PERDA (N0394013 E0093843)

IOAT: follow PERDA5A/5B ([refer to vPIV/FLIP](#))

TC "VENUS 1" LIMIT: as instructed by ATC

Used by aircraft to enter/exit "STAR2" from/to "CAR" VOR

Line Joining the following points:

CAR – ERPEM - N0392800E0122000

TC "VENUS2" LIMITS: FL220-FL250

Used by aircraft transiting STAR1/STAR2.

STAR1 → STAR2 FL220, FL240

STAR2 ← STAR1 FL230, FL250

Line Joining the following points:

N0392800E0122000 - N0392300E0113400

TC "VENUS3" LIMITS: FL220-FL250

Used by aircraft transiting STAR1/STAR2.

STAR1 → STAR2 FL220, FL240

STAR2 ← STAR1 FL230, FL250

Line Joining the following points:

N0402900E0121300 - N0402600E0112000

TC "JOINTSTAR NORTH RECOVERY"

Used by aircraft to exit "STAR1"

Line Joining the following points:

LULIX - RAMEN

After RAMEN:

IAOT: follow one of the RAMEN HPMA STARs as instructed by ATC ([refer to vPIV/FLIP](#))

VOAT: continue inbound ALPHA NORTH (N03933000 E00846000)

TC "JOINTSTAR SOUTH RECOVERY"

Used by aircraft to exit "STAR1" and STAR3

After PERDA (N0394013 E0093843):

IAOT: follow one of the PERDA HPMA STARs as instructed by ATC ([refer to vPIV/FLIP](#))

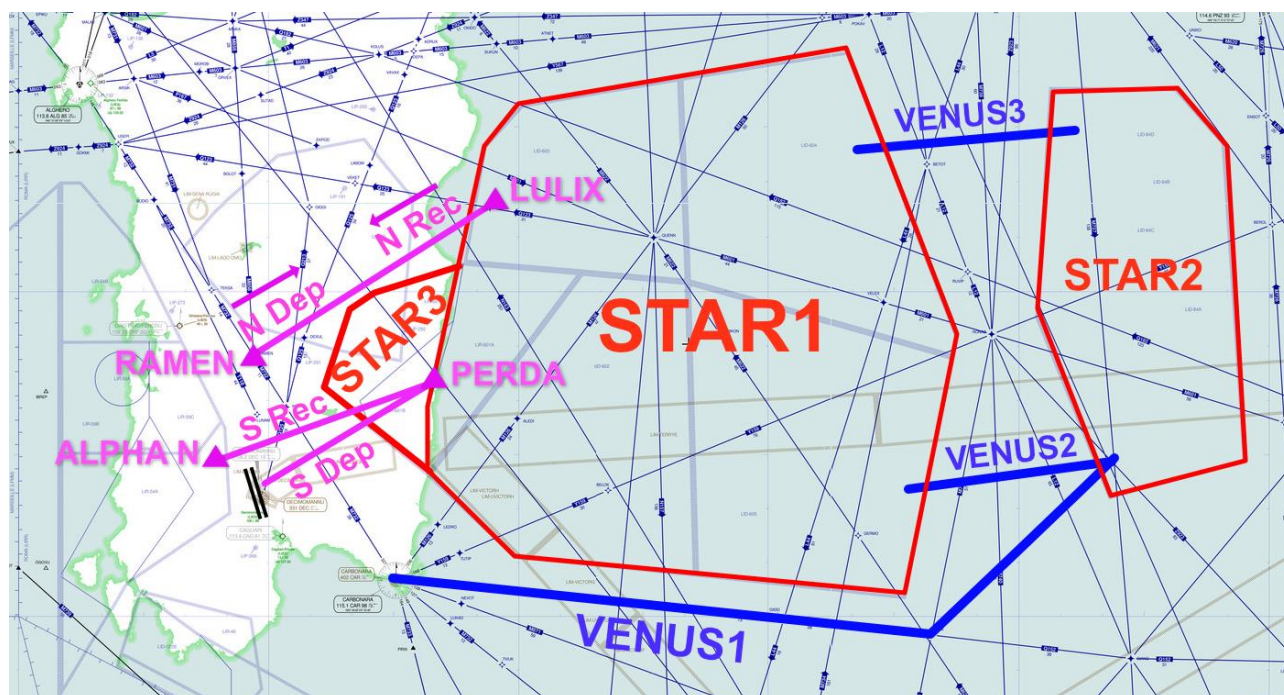
VOAT: from PERDA continue inbound ALPHA NORTH (N03933000 E00846000)

BE ADVISED: STANDARD VFR ROUTES AS DESCRIBED ON "LIED_SOP" DOCUMENT ARE SUSPENDED FOR THIS EVENT.

5. AAR PATTERN

Anchor point N0402629 E0123749 Inb. trk 355° - Left Turn – 50NM - Boom level FL240

6. PLAY AREAS VISUAL REPRESENTATION



7. MISSION BRIEFING

[Click to download](#)

8. INFLIGHT GUIDE

[Click to download](#)

9. ATC BRIEFING

Not available yet, will be sent via email privately.

10. RESOURCES

[LIED SCENERY \(FSX-P3D\)](#)

[SO DISCORD SERVER](#)

[JOINFS \(MORE DETAILS ON "MISSION BRIEFING"\)](#)

[MILAIP & PIV/FLIP\(AD Charts\)](#)

SCENERY for SAR MIX WILL BE SENT TO PARTIPANTS LATER ON