

# International Virtual Aviation Organisation

## SO Online Day

France Division

Tuesday, October 21, 2025



*Special Operations Department*

International Virtual Aviation Organisation

# Content

Introduction	2
Definitions	2
Airports	3
Special Aeras	5
Missions	7
Contact	8

## Introduction

The France Division and its Special Operations Department are pleased to invite you to the SO Online Day on October 21st, 2025

This event will take place in France, within the Grand Est region.

From 1700z to 2000z, you will have the opportunity to join training missions, whether flying fighter jets or engaging in SAR operations to locate a pilot ejected after a crash.

## Definitions

If the event master plan contains terms that may not be familiar to the general public, please define them here.

TERM	EXPLANATION
GAT	General Air Traffic
OAT	Operational Air Traffic
TRA	Temporary Restricted Airspace
AAR	Air to Air Refuelling
FFR	Firefighting
AAF	Air to Air Fighting
SAR	Search and Rescue

1. All pilots wanting to participate MUST register at last 4h prior to event start
2. All ATC must have in depth knowledge of the position and tasks they will occupy
3. All aircraft must be suitable for the mission
4. Any other traffic not participating by flying any of the published missions, may still operate out of the event aerodromes, while not being highest priority with ATC.

# Airports

## Luxeuil Air Force Base

**ICAO:** LFSX

### Charts

Runway	Length	ILS	CIRCUIT	HEIGHT
11	2433 m	LXI 108.10	Right	884 ft
29	2433 m	N/A	Left	858 ft

### ATC

Position	Callsign	Frequency
LFSX-TWR	Luxeuil Tower	122.100
LFSX-APP	Luxeuil Approach	129.925

# Airports

## Dijon Longvic Airport

**ICAO:** LFSD

### Charts

Runway	Length	ILS	CIRCUIT	HEIGHT
17	2400 m	DJL 111.45	Left	726 ft
35	2400 m	N/A	Right	710 ft
19	1200 m	N/A	Right	727 ft
01	1200m	N/A	Left	727 ft

### ATC

Position	Callsign	Frequency
LFSD-FIS-TWR	Dijon Information	118.330
LFSB-APP	Bâle Approach	124.105 (above 3000ft only)

### Parking Information

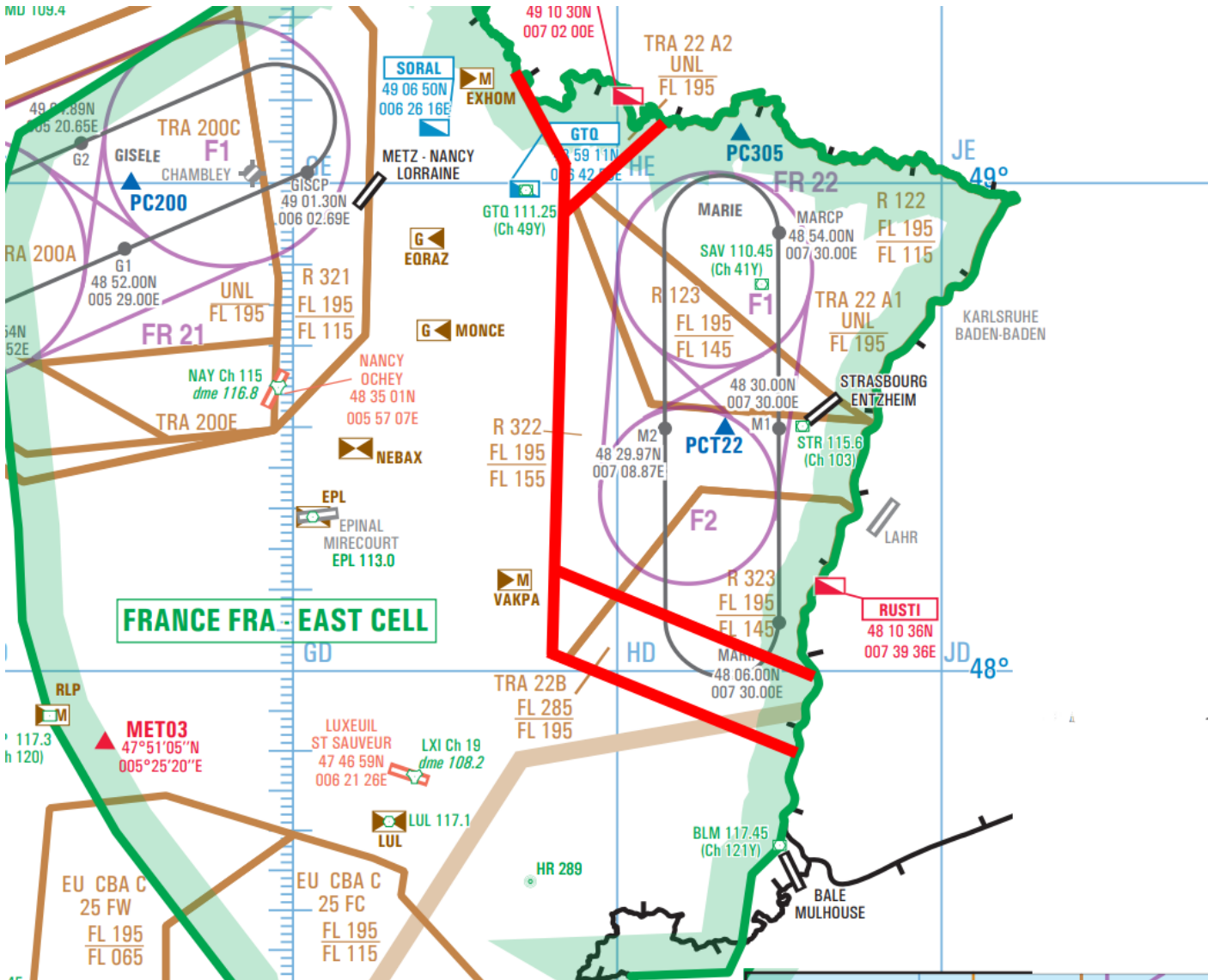
See charts.

# Special areas :

## TRA 22 A1/2+B – Refuelling Area

TRA 22A : FL195 to UNL

TRA 22B: FL195 to FL285



Refuelling Pattern :

### MARIE (FL200/FL285 – FL230 Recommended)

*Straight lines of the tracks are 48 NM long. The distance between the two reference points is 14 NM, which represents the width of the tracks shown on the maps.*





## Contact

Email: [fr-specialops@ivao.aero](mailto:fr-specialops@ivao.aero)

Forum: <https://forum.ivao.aero/forums/special-operations.162/>

Discord: <https://sod.ivao.aero/discord>