

OPERATION GRANJA

IVAO PT SPECIAL OPERATIONS DEPARTMENT



1. INTRODUCTION

Portuguese division invites you to join us in the Operation Granja event in Lisboa FIR. The scenario aims to simulate a tactical base during a military conflict where troops are needed and injuries happen, so, in order to keep our force with full operational capabilities you will be asked to perform two types of missions:

Medical Evacuations/Tactical Air Transport or Paratroopers drop. The tactical base has only a challenging non-prepared runway available.

Operation Granja will take place on August 8th starting at 1300 Z.

2. BRIEFING

Although this event master plan is enough to plan and perform your mission successfully, we will hold a verbal briefing as well, at 1300 Z on the IVAO Special Operations Discord, room so_event_1_voice which is NOT MANDATORY. The first hour of the event will be reserved for the verbal briefing, with the first group departing at 1400z.

3. GENERAL GUIDELINES

- Pilots MUST register before the event if they wish to participate and win the SO points.
- Controllers must have an in-depth understanding of the Portuguese airspace and phraseology of Special Operations and must be able to attend a verbal briefing some days before the event.
- Controllers must use clear English; however, Portuguese phraseology will be allowed during this event.

4. GROUPS

4.1. Group A

Mission: Drop Paratroopers

Departure Time: 14:00 UTC

4.2. Group B

Mission: Tactical Air Transport / Medical Evacuation

Departure Time: 14:00 UTC

4.3. Group C

Mission: Drop Paratroopers

Departure Time: 14:30 UTC

4.4. Group D

Mission: Tactical Air Transport / Medical Evacuation

Departure Time: 14:30 UTC

4.5. Group E

Mission: Drop Paratroopers

Departure Time: 15:00 UTC

4.6. Group F

Mission: Tactical Air Transport / Medical Evacuation

Departure Time: 15:00 UTC

4.7. Group G

Mission: Drop Paratroopers

Departure Time: 15:30 UTC

4.8. Group H

Mission: Tactical Air Transport / Medical Evacuation

Departure Time: 15:30 UTC

5. MISSIONS

5.1. Paratroopers Drop

This mission may be flown with either a fixed-wing or a rotary-wing aircraft. You will depart from the Tactical Base (LPB1) inbound Tancos drop zone (LPR-39A), which will be active by NOTAM from GND to FL145. After the drop proceed to Ovar Airbase (LPOV) for full stop landing.

ROUTE: DCT NSA DCT TANCOS/STAY0010 TANCOS DCT FTM DCT OVR DCT

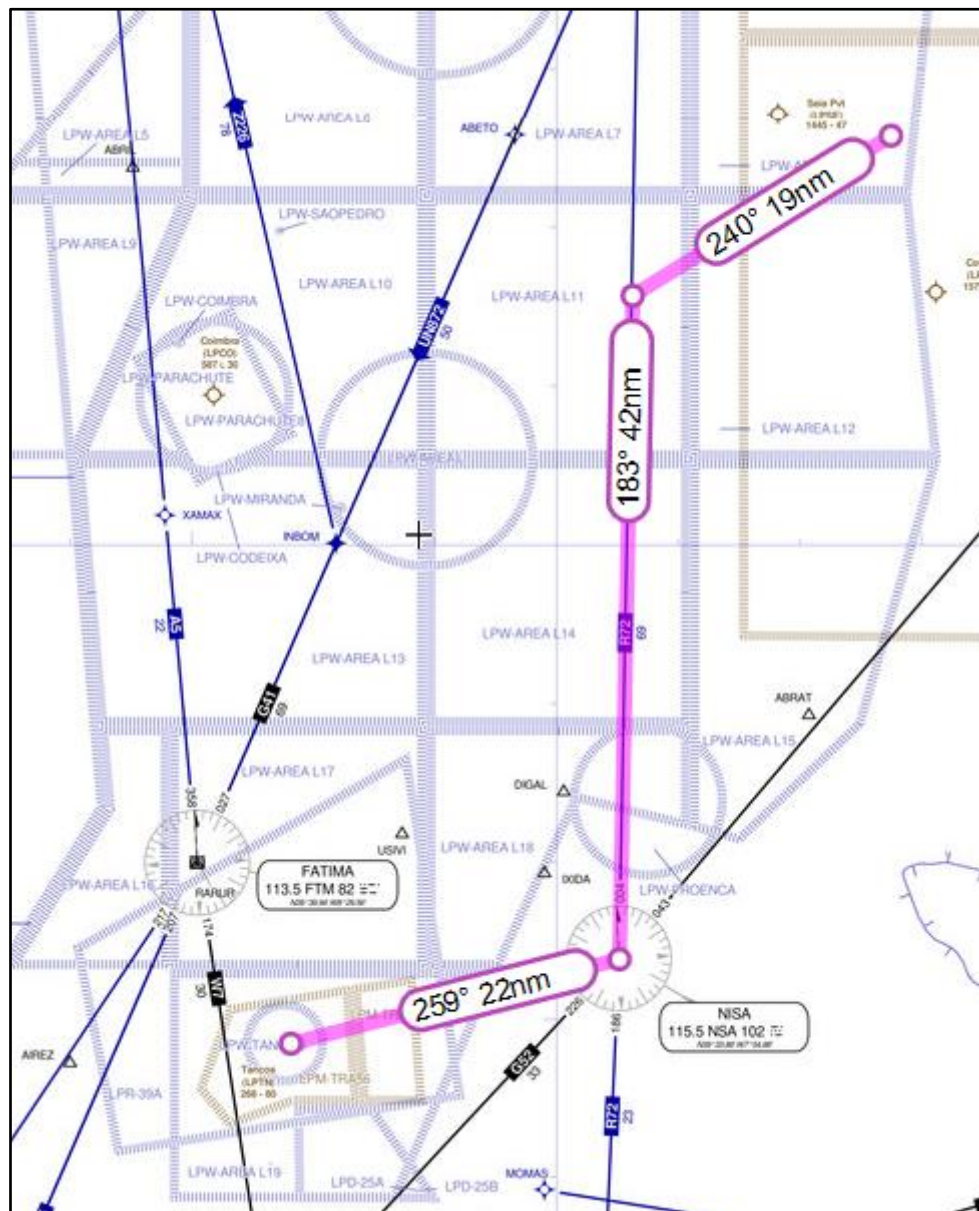


Figure 1 - LPB1 to LPR-39A Route

ROUTE: DCT NSA DCT TANCOS/STAY0010 TANCOS DCT FTM DCT OVR DCT

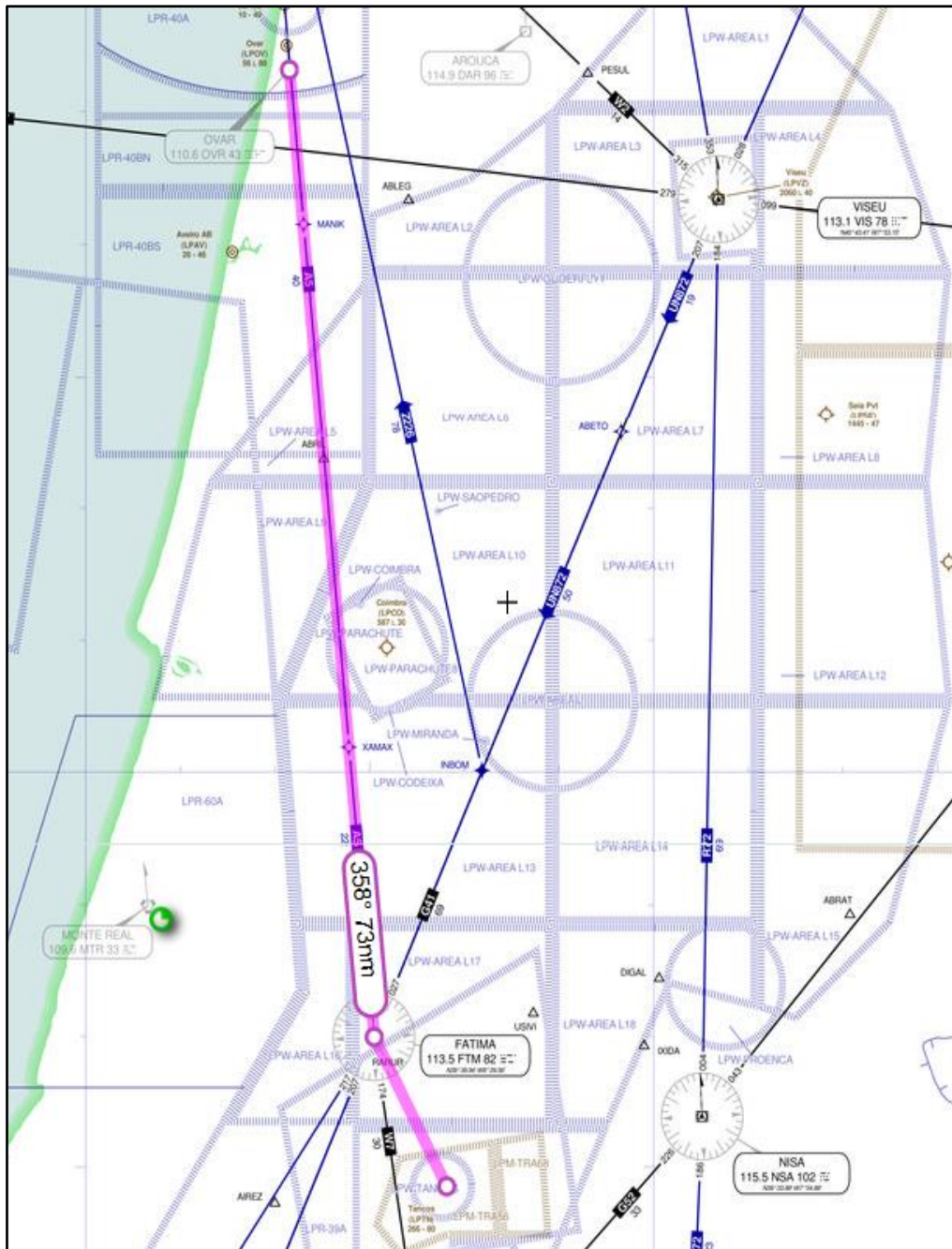


Figure 2 - LPR-39A to LPOV Route

5.2. Tactical Air Transport / Medical Evacuation

This mission may be flown with either a fixed-wing or a rotary-wing aircraft. You will depart from Ovar airbase (LPOV) inbound LPB1 Tactical Base. After landing at the Tactical Base you should either disembark the paratroopers or board the casualties, and then perform a turnaround inbound Ovar Airbase (LPOV). Following your arrival to Ovar Airbase medical personnel will carry the casualties into a nearby hospital.

ROUTES:

LEG1: DCT VIS DCT PINOX DCT COVILHA DCT



Figure 3 - LPOV to LPB1 Route

LEG 2: DCT VIS DCT

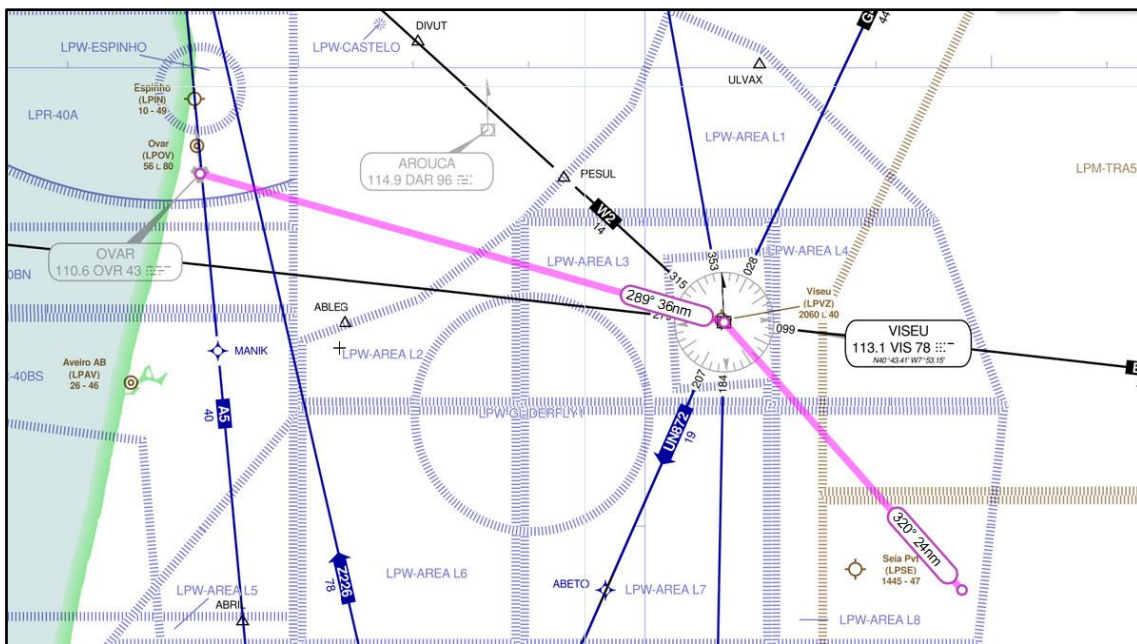


Figure 4 - LPB1 to LPOV Route

6. PROCEDURES

6.1. OVAR AIRBASE (LPOV)

DEPARTURES: Aircraft departing should maintain RWY Heading and Climb FL60.

ARRIVALS: Aircraft arriving should expect vectors for the ILS RWY36 or Visual APP on both RWY's.

6.2. TACTICAL BASE (LPB1)

Due to terrain and traffic management only RWY22 will be available for both Departures and Arrivals. Be aware of the taxiing in and out procedures on the images below. Tactical Base Location: N40° 27.31' W007° 33.43'.



Figure 5 - Stand 1



Figure 6 - Stand 2



Figure 5 - Stand 3

DEPARTURES: Aircraft departing from Tactical Base should maintain RWY Heading until 7000ft, and then proceed to NSA VOR or VIS VOR, unless otherwise instructed.

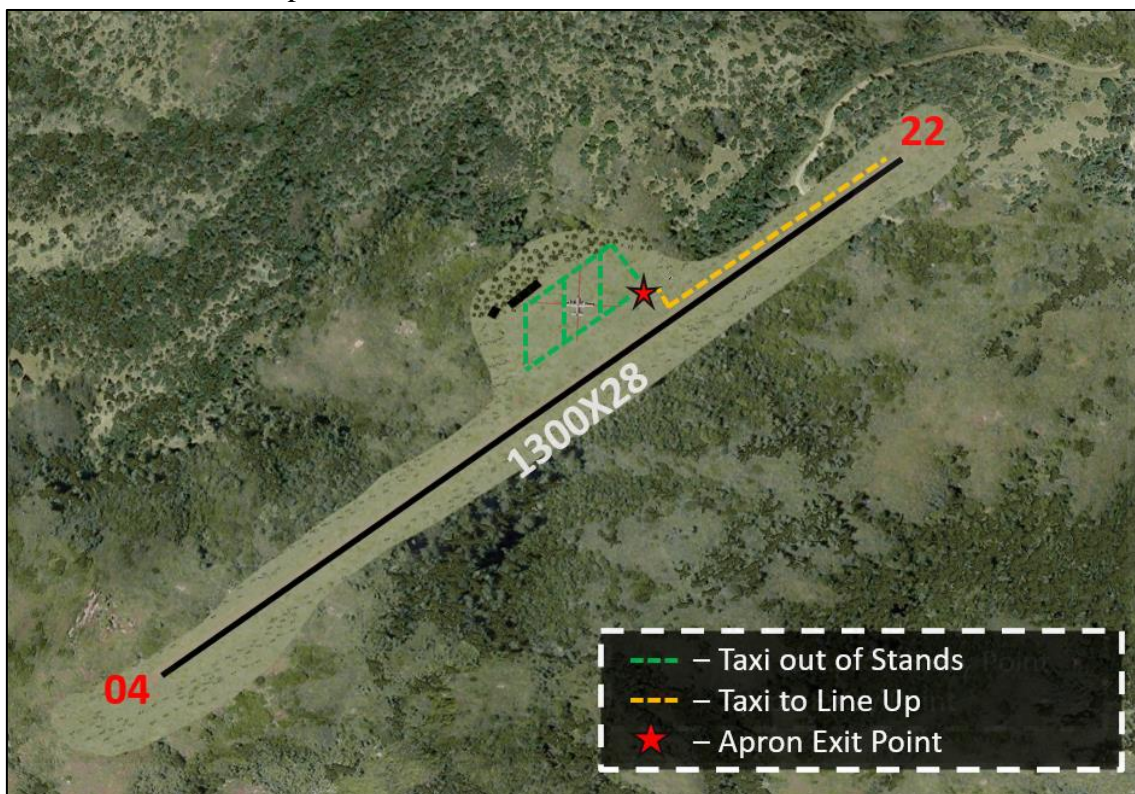


Figure 6 - Departure Taxi Diagram

ARRIVALS: Aircraft arriving must report passing COVILHA (LPCV) and then proceed to vertical of the field at 7000' MSL (1500' AAL) and then join right downwind RWY22.



Figure 9 - LPB1 Circuit Pattern

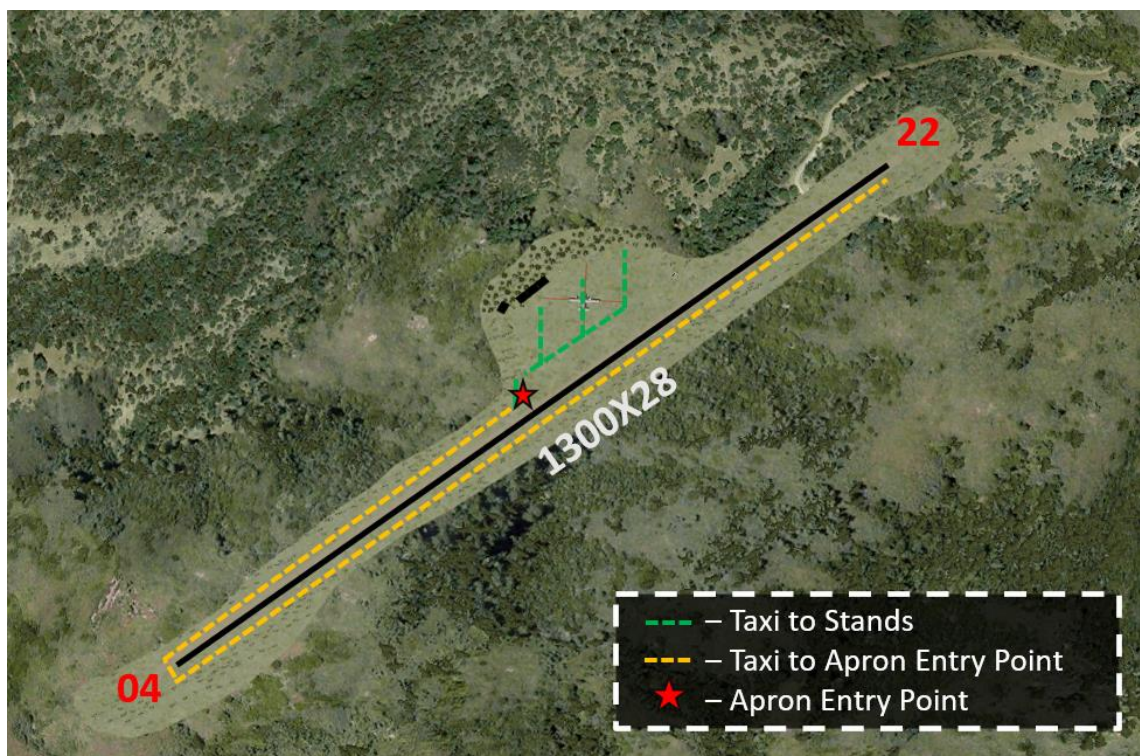


Figure 10 - Arrival Taxi Diagram

6.3. TANCOS DROP ZONE (LPR-39A)

PROCEDURES: Aircraft reaching Restricted Area LPR-39A (Drop Zone) should be aware of both lateral and vertical limits of the area, as shown below. It is the responsibility of the pilot to perform a safe drop inside the Drop Zone. After the drop is complete pilots should proceed the assigned route to LPOV (image 2).

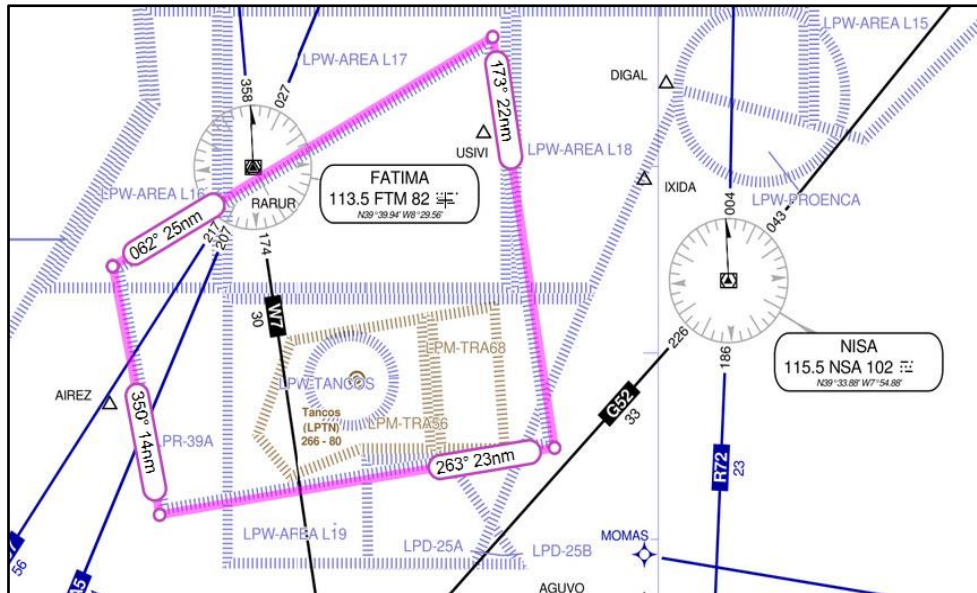


Figure 8 - LPR-39A Restricted Area

7. ATC Positions

| Identifier | Callsign | Frequency |
|---------------|---------------|-----------|
| LPOV_APP | Ovar Approach | 118.600 |
| LPOV_TWR | Ovar Tower | 122.100 |
| LPAM_MIL1_CTR | ZEUS | 135.100 |
| LPAM_MIL2_CTR | GUARDIAN | 136.300 |

8. NOTAMS

-PTPTOV01/19: TEMPORARY SEGREGATED AREA ESTABLISHED WITHIN AREA BOUNDED BY STRAIGHT LINES JOINING SUCCESSIVELY:

405519N0085905W - 405251N0083005W - 404924N0083005W -
404400N0083005W - 404400N0085905W - 404924N0085905W -
405519N0085905W

LOWER LIMIT: SFC UPPER LIMIT: FL145 ACTIVATION: 8AGO20 1400 –
1700 CONDITIONS OF USE: RESERVED AND DESIGNATED FOR
EXCLUSIVE USE BY PARTICIPANTS OF OPERATION CROWDED SKIES
XV SPECIAL OPERATIONS EVENT ONLY, NO OTHER AIR TRAFFIC
SHALL ENTER RESTRICTED AREA

-PTPTTN01/20: TEMPORARY SEGREGATED AREA ESTABLISHED WITHIN AREA BOUNDED BY STRAIGHT LINES JOINING SUCCESSIVELY:

393440N0083945W - 394656N0081205W - 392456N0080735W -
392120N0083620W - 393440N0083945W

LOWER LIMIT: SFC UPPER LIMIT: FL145 ACTIVATION: 8AGO20 1400 -
1700 CONDITIONS OF USE: RESERVED AND DESIGNATED FOR
EXCLUSIVE USE BY PARTICIPANTS OF OPERATION CROWDED SKIES
XV SPECIAL OPERATIONS EVENT ONLY, NO OTHER AIR TRAFFIC
SHALL ENTER RESTRICTED AREA

-PTPTTB01/20: TEMPORARY SEGREGATED AREA ESTABLISHED WITHIN AREA BOUNDED BY STRAIGHT LINES JOINING SUCCESSIVELY:

403227N0074504W - 403159N0071542W - 401342N0071555W -
401332N0074451W - 403227N0074504W

LOWER LIMIT: SFC UPPER LIMIT: FL145 ACTIVATION: 8AGO20 1400 – 1700 CONDITIONS OF USE: RESERVED AND DESIGNATED FOR EXCLUSIVE USE BY PARTICIPANTS OF OPERATION CROWDED SKIES XV SPECIAL OPERATIONS EVENT ONLY, NO OTHER AIR TRAFFIC SHALL ENTER RESTRICTED AREA

9. CHARTS & SCENERIES

No charts available for these missions. Comply with all the procedures explained above.

Tactical base's scenery MUST be downloaded with the following links:

[Tactical Base FSX/P3D](#)

[Tactical Base XPlane](#)

10. ADDITIONAL INFORMATION

For further information contact pt-soc@ivao.aero and pt-soac@ivao.aero .