



CHILE SPECIAL OPERATIONS LAUNCH EVENT

Space left intentionally blank



Introduction

Puerto Montt city are needed for medical supplies, so the Chilean Air Force (FACH) will carry out transfers from Santiago to the city in need.

Main Mission

Puerto Montt city needs medical supplies, so the Chilean Air Force (FACH) has requested assistance from international pilots to help and carry out transfers from Santiago to the city in need.

Transport important cargo of medical supplies from Santiago to Puerto Montt. The cargo planes will be escorted by fighters taken off from Concepción (SCIE) until 10 DME inbound of Puerto Montt VOR (MON).

In case of being necessary, there will be two tankers tracks ready to refuel any fighter.

Space left intentionally blank



Event Details

Date: Saturday, February 13rd, 2021

Time: 18:00 – 22:00 UTC

General timeline:

18:00 UTC: Santiago / Concepción ATCOS open

18:05 – 19:20 UTC: Cargo transport departures from Santiago to Puerto Montt

18:00 UTC: Jet Fighter departure from Concepción to escort transport aircrafts

18:10: Departure of tankers.

19:30 – 21:50 UTC: Arrivals to Puerto Montt.

22:00 UTC: End of the Event – ATCOS and Pilots disconnect.

Missions:

A) Cargo Transport Pilots

They only need to perform unidirectional SCEL - SCTE flight.

Allowed ACF: B737, A320 Family, C-130, B763, etcetera.

Suggested Route: **SCEL** ANGOD UQ803 ERUKA **SCTE**



Space left intentionally blank.



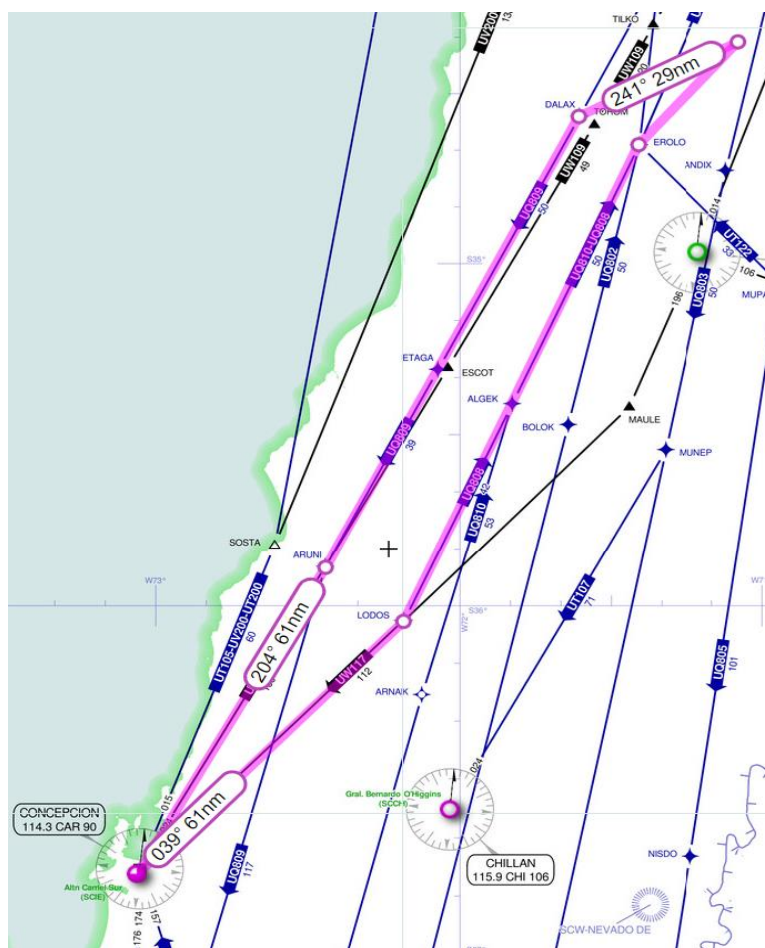
B) Jet Fighter Pilots (JF)

They are going to escort cargo aircraft operating from Concepción, then, they enter the CAP station inside SCR-2, (Orbit Point: radial 035 of ICO VOR at 45nm outbound) when the cargo aircraft pass through their area of responsibility, ATC will assign escorts to them. Also, if it's needed fighters can refuel inside SCR-6.

Allowed ACF: F16, F22, etcetera.

Suggested Route: **SCIE** LODOS UQ808 EROLO (STAY1/0130) DCT DALAX UQ809 ARUNI **SCIE**

FPL RMK: STAY1INFO/CAP INSIDE SCR-2



Space left intentionally blank.



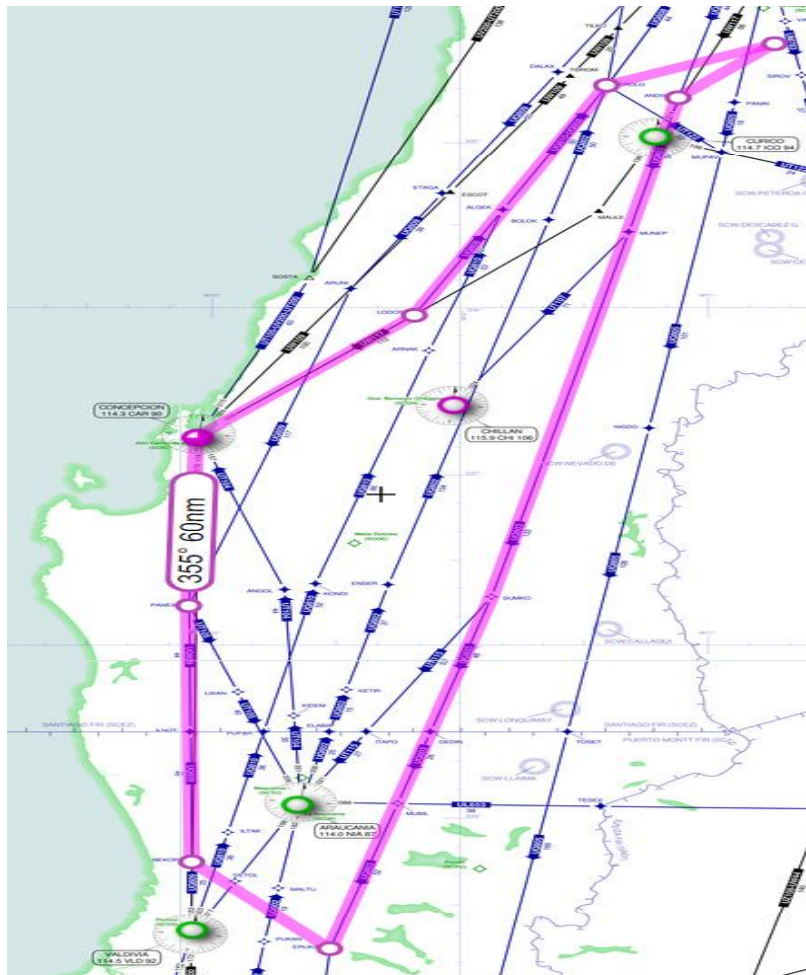
C) Refuel Pilots

Pilots of refueling aircraft should intercept radial 010 at 40 nm outbound of ICO VOR, entry to SCR-6 and orbit as graphic on image bellow, waiting for receivers.

Allowed ACF: KC-135, KC-130, KC-767, A330MRTT, etcetera.

Suggested Route: **SCIE** LODOS UQ808 EROLO (STAY1/0130) ANDIX UQ803 ERUKADCT NEKOR UQ809 PANEX **SCIE**

FPL RMK: STAY1INFO/AAR TRACK INSIDE SCR-6



Space left intentionally blank.



Restricted zones – NOTAMS

Civil flights at UQ803, UQ-808, UQ809 airways, between FL240-410 will be restricted via NOTAM at least 72 hours before event start:

AWY UQ803 BTW ANGOD-ERUKA RESTR BTW FL 240 / FL410 DUE SPECIAL OPERATIONS ACTIVITIES. NO CIVILIAN AIRCRAFT SHALL FLY BETWEEN SAID FLIGHT LEVELS.

AWY UQ808 BTW LODOS-EROLO RESTR BTW FL 240 / FL410 DUE SPECIAL OPERATIONS ACTIVITIES. NO CIVILIAN AIRCRAFT SHALL FLY BETWEEN SAID FLIGHT LEVELS.

AWY UQ809 BTW DALAK-VLD RESTR BTW FL 240 / FL410 DUE SPECIAL OPERATIONS ACTIVITIES. NO CIVILIAN AIRCRAFT SHALL FLY BETWEEN SAID FLIGHT LEVELS.

SCR-2 Rancagua (Restricted airspace):

34 12 00 S 70 44 00 W

34 14 00 S 70 35 00 W

34 30 00 S 70 39 00 W

34 30 00 S 70 52 00 W

SCR-2 ZONE ACTIVATED BTW FL120 / FL270 DUE SPECIAL OPERATIONS ACTIVITIES. NO CIVILIAN AIRCRAFT SHALL FLY BETWEEN SAID FLIGHT LEVELS AND/OR IN THAT AREA.

SCR-6 Rancagua (Restricted airspace)

34 04 00 S 70 54 00 W

34 04 00 S 70 46 30 W

34 30 00 S 71 00 00 W

34 30 00 S 71 15 00 W

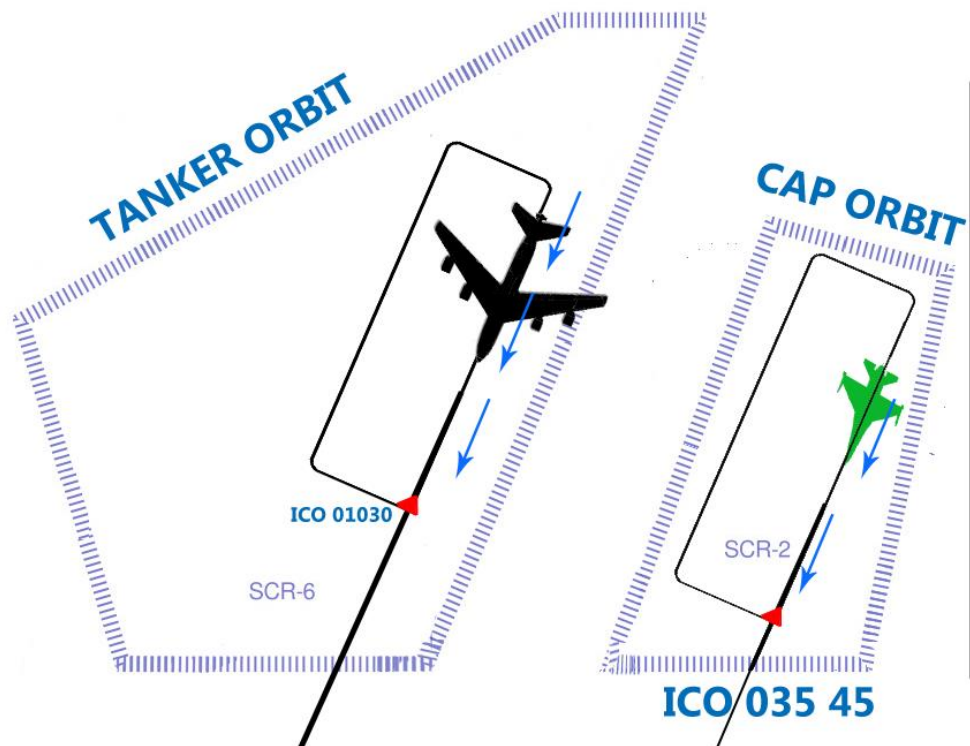
34 16 00 S 71 20 00 W

SCR-6 ZONE ACTIVATED BTW FL200 / FL270 DUE SPECIAL OPERATIONS ACTIVITIES. NO CIVILIAN AIRCRAFT SHALL FLY BETWEEN SAID FLIGHT LEVELS AND/OR IN THAT AREA.

Space left intentionally blank.



Restricted zones SC-R6 / SC-R2 graphic



Space left intentionally blank.



Communications

APP

Name	Type	Frecuency
ICO	VOR	114.7
CAR (SCIE)	VOR	114.3
CHI	VOR	115.9
MON (SCTE)	VOR	115.7
IMON (SCTE)	ILS	110.1
ICEP (SCIE)	ILS	109.9

ATC

ATC	Callsing	Frecuency
SCEL_GND	Santiago Ground	122.2
SCEL_TWR	Santiago Tower	118.1
SCEL_APP	Santiago Radar	119.7
SCEZ_MIL_CTR	Santiago Military Control	133.4
SCTZ_MIL_CTR	Puerto Montt Military Control	133.5
SCTE_APP	Puerto Montt Radar	128.3
SCTE_TWR	Puerto Montt Tower	118.1
SCIE_APP	Concepción Radar	129.35

Pilots and ATC will intercommunicate via IVAO Chile Discord

https://discord.com/invite/RVDxyvFc?utm_source=Discord%20Widget&utm_medium=Connect

Space left intentionally blank.



Sceneries

SCTE / SCIE

- XPL 11 (Freeware): <https://3dmodelbrasil.com/2019/02/18/chile-xplane-scenery/>
- FSX/P3D (also here you have Photorealistic - Freeware): <https://3dmodelbrasil.com/2018/09/13/chile/>

SCEL

- XPL 11 (Freeware): <https://gateway.x-plane.com/airports/SCEL/show>
- XPL 11 (Payware): <https://www.aerosoft.com/us/flight-simulation/continents-sceneries/south-america/2928/scel-intl.-airport-santiago-city-2020-xp?c=892>
- FSX (Freeware): <https://www.freewarescenery.com/fsx/chile.html>

IMPORTANT: Participant Pilots and ATC must register on SOD Event website in order to receive his points for Special Operations HQ Awards

CL-SOC: Joaquín Ampuero.

cl-specialops@ivao.aero

cl.ivao.aero/