



ITALY SO DEPARTMENT

GRYPHON 2020

MISSION BRIEFING

23 February 2020 1530-1800UTC



WWW.IVAO.IT



Welcome to the GRYPHON2020 SAR Exercise!

The scope of this event is to perform a “joint” training with various helicopter and airplane assets with the aim of reaching a good level of performance between different “SAR agencies” and hopefully having fun doing it!

INDEX

- [DEFINITIONS](#)
- [GLOBAL SCENARIO](#)
- [MIX 1 – HELICOPTER EVACUATION.](#)
- [MIX 2 – HELICOPTER LOGISTIC TRANSPORT.](#)
- [MIX 3 – AIRCRAFT LOGISTIC TRANSPORT.](#)
- [COMMON DATA](#)
- [PARKINGS](#)
- [PROCEDURES](#)
- [EVACUATION REPORT](#)
- [MISSION TIMELINE](#)
- [OPS CHANNELIZATION](#)
- [MISC](#)

1. DEFINITIONS

- General Air Traffic (GAT): Civil and military flights conducted in accordance with the rules and the regulations of the ICAO and/or issued by the Italian civil aviation authority.
- Operational Air Traffic (OAT): SO flights that, for military, technical or State reasons do not comply with the provision stated for General Air Traffic (GAT).
- VOAT (Visual OAT), flight missions operating according to operational vfr.
- IOAT (Instrument OAT), flight missions operating according to operational instrument flight rules.

2. GLOBAL SCENARIO

Following the heavy rains of the last weeks, *Colvera creek* flooded the whole village of *Tesis*, rescue have been immediately activated and a tent city has been set up in “Borgo Magredo” area. Helicopters and Aircrafts will operate from Rivolto Air Force Base in support of rescue operations. A refueling point for the helicopters will be available near tent city to support operations.



3. MIX 1 - HELICOPTER EVACUATION

You will depart from Rivolto AFB and you will fly directly to Tesis to start your operations. Your main task is to evacuate inhabitants and to transport them at Borgo Magredo where a first aid station has been located. You can also complete a refueling if needed thanks to a Forward Arming and Refueling Point (FARP) located at Borgo Magredo. An entry and exit pattern will be available to coordinate operations near FARP and tent city areas.

To simulate the flooded town, helicopters will execute hovering flight over the area to simulate **hoist** operations. Fly “stationary” for a minimum of 1 minute to a maximum of 2 minutes then proceed to FARP for disembarking of evacuated personnel.

3.1. FPL

(FPL-RESCU01-VM

-01xxxx/x-xxxxx/x

-LIPxxxx

-N0200VFR TESIS

-LIPxxxx LIPA

-STS/STATE RMK/VOAT GRYPHON 2020 EXE OPAREA/GRYPHON AREA FMxxxx Toxxxx)



4. MIX 2 - HELICOPTER LOGISTIC TRANSPORT

You will depart from Rivilto AFB and you will fly to Borgo Magredo. Your main task is to deliver electric power generators and logistic support personnel to Borgo Magredo where a first aid station has been located. You can also complete a refueling if needed thanks to a Forward Arming and Refueling Point (FARP) named "GRYPHON BASE" located in Borgo Magredo. An entry and exit pattern will be available to coordinate operations near FARP and tent city areas.

4.1. FPL

(FPL-CHAIN01-VM

-01xxxx/L-xxxxxx/x

-LIPxxxx

-N0xxxVFR BORGO MAGREDO ROMEO DCT

-LIPxxxx LIPA

-STS/STATE RMK/VOAT EQUIPMENT TRANSPORT GRYPHON 2020 EXE)



5. MIX 3 - AIRCRAFT LOGISTIC TRANSPORT

This mission is reserved to 3 persons only. Take-off from LIPC Cervia and fly to LIPI Rivolto. Your main task is to deliver electric power generators and logistic support personnel. Unload the cargo and fly back to LIPC Cervia.

5.1. FPL

(FPL-LIFTxx-IM

-01xxxx/x-xxxxxx/x

-LIPCxxxx

-N0xxxxFxxx CHI

-LIPIxxxx LIPA

-STS/STATE RMK/IOAT EQUIPMENT TRANSPORT GRYPHON 2020 EXE)

(FPL-LIFTxx-IM

-01xxxx/x-xxxxxx/x

-LIPIxxxx

-N0xxxxFxxx CHI AMLON

-LIPCxxxx LIPE

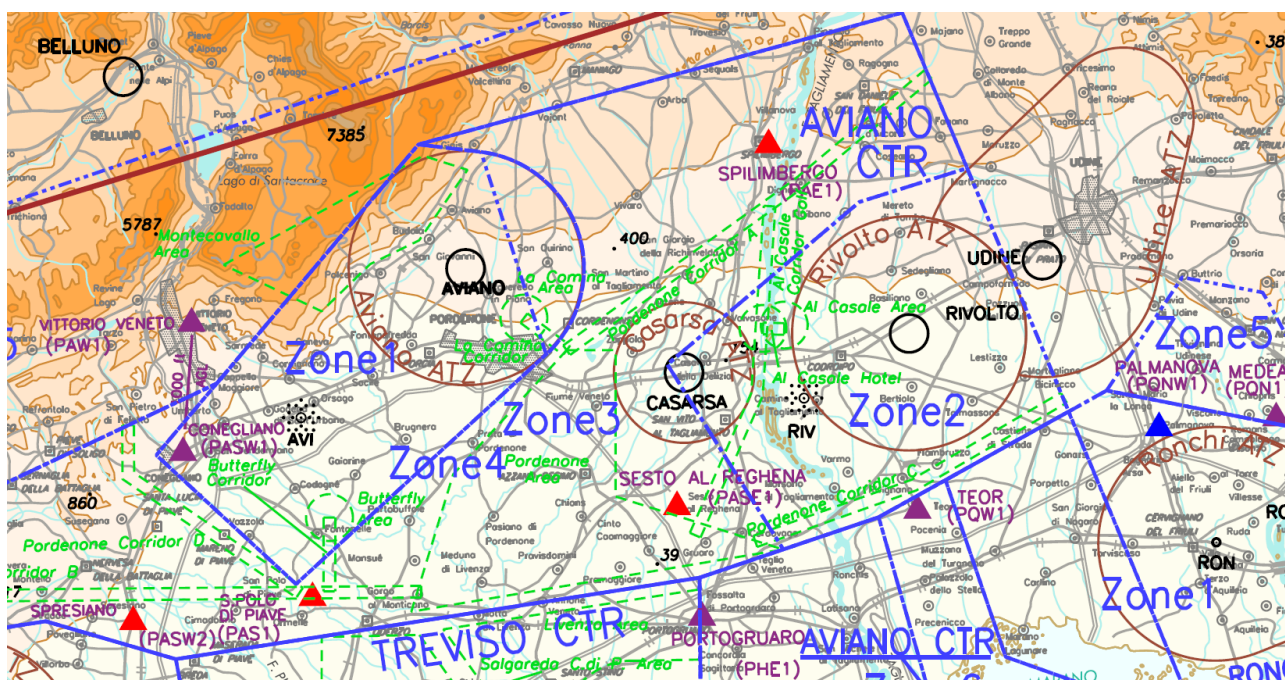
-STS/STATE RMK/IOAT EQUIPMENT TRANSPORT GRYPHON 2020 EXE)



6. COMMON DATA

MIX#		CALLSIGNS		SQUAWKS	
MIX1 HELICOPTER EVACUATION		RESCUE xx		from 1001 to 1040	
MIX2 HELICOPTER LOGISTIC TRANSPORT		CHAIN xx		from 1041 to 1077	
MIX3 AIRCRAFT LOGISTIC TRANSPORT		LIFT 01-02-03		3431-3432-3433	
NAVAIDS		COMMS			
RIV TAC	Freq 37X - (110.0)	LIPI_TWR "Rivolto TWR"		126.850	
RIV NDB	Freq 371	LIPA_APP "Aviano Radar"		120.125	
AVI TAC	Freq 111X - (116.4)	LIPP_NE2_CTR "Padova Radar"		120.725	
AVI NDB	Freq 390	RCC "Gipsy"		Discord	
		LIPI_G_APP "Rivolto Precision"		127.525 Prior request	
		LIPC_G_APP "Cervia Precision"		123.300 Prior request	
COORDINATES					
ROMEO point		460405N 125739E (Which correspond to RISOM)			
NOVEMBER (for ATC backup)		460542N 130333E (LIPI VRP published)			
TESIS RESCUE area		460634N 124638E			
FARP "GRYPHON BASE" (TENT CITY)		460558N 125055E			
AVIANO CTR					
Zone 1	SFC/2000ft AMSL	Zone 4	2000ft AMSL/FL195	Class "D"	
Zone 2	SFC/2000ft AMSL	Zone 5	FL100/FL195		
Zone 3	SFC/2000ft AMSL	Zone 6	FL85/FL195		

OPS Zone: Aviano CTR zone 2 and 3 – Rivolto ATZ and Aviano ATZ (as Alternate)



6.1. NOTAM

A TEMPORARY SEGREGATED AIRSPACE NAMED “GRYPHON AREA” HAS BEEN ESTABLISHED WITHIN AREA BOUNDED BY STRAIGHT LINES JOINING SUCCESSIVELY:

460818847E 124505846E

460418030E 124506538E

460417537E 125249314E

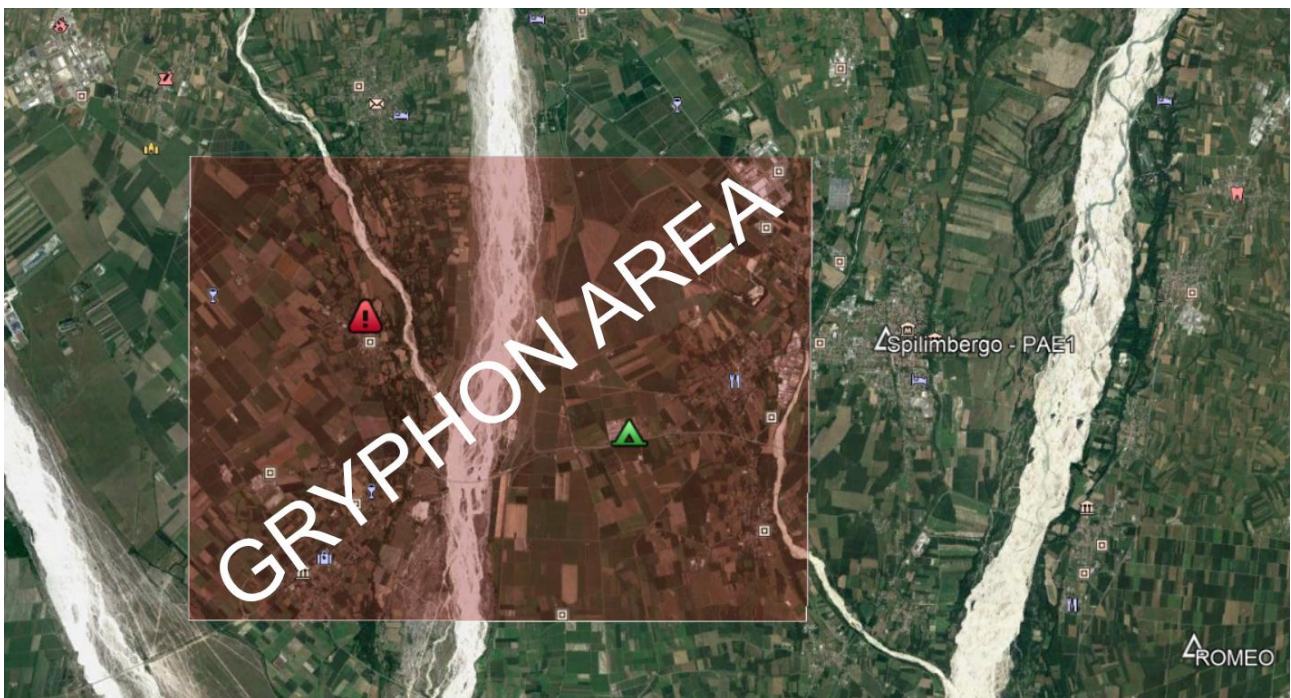
460818624E 125253771E

VFR FLIGHTS NOT INVOLVED ON “GRYPHON 2020” MUST AVOID THE AREA.

DUE TO THE VICINITY OF THE AREA OF OPERATIONS THE VRP “SPILIMBERGO/PAE1” CAN BE LIMITED OR DENIED BY ATC ON TACTICAL BASIS

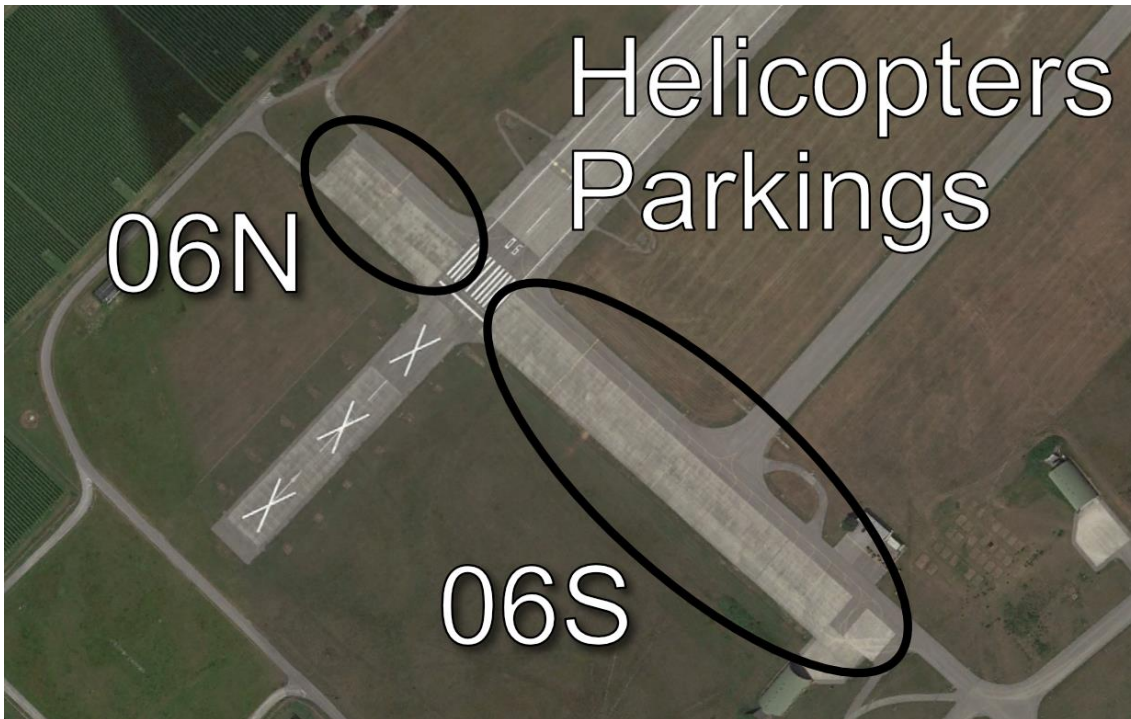
Top level: 3000ft

Bottom level: SFC

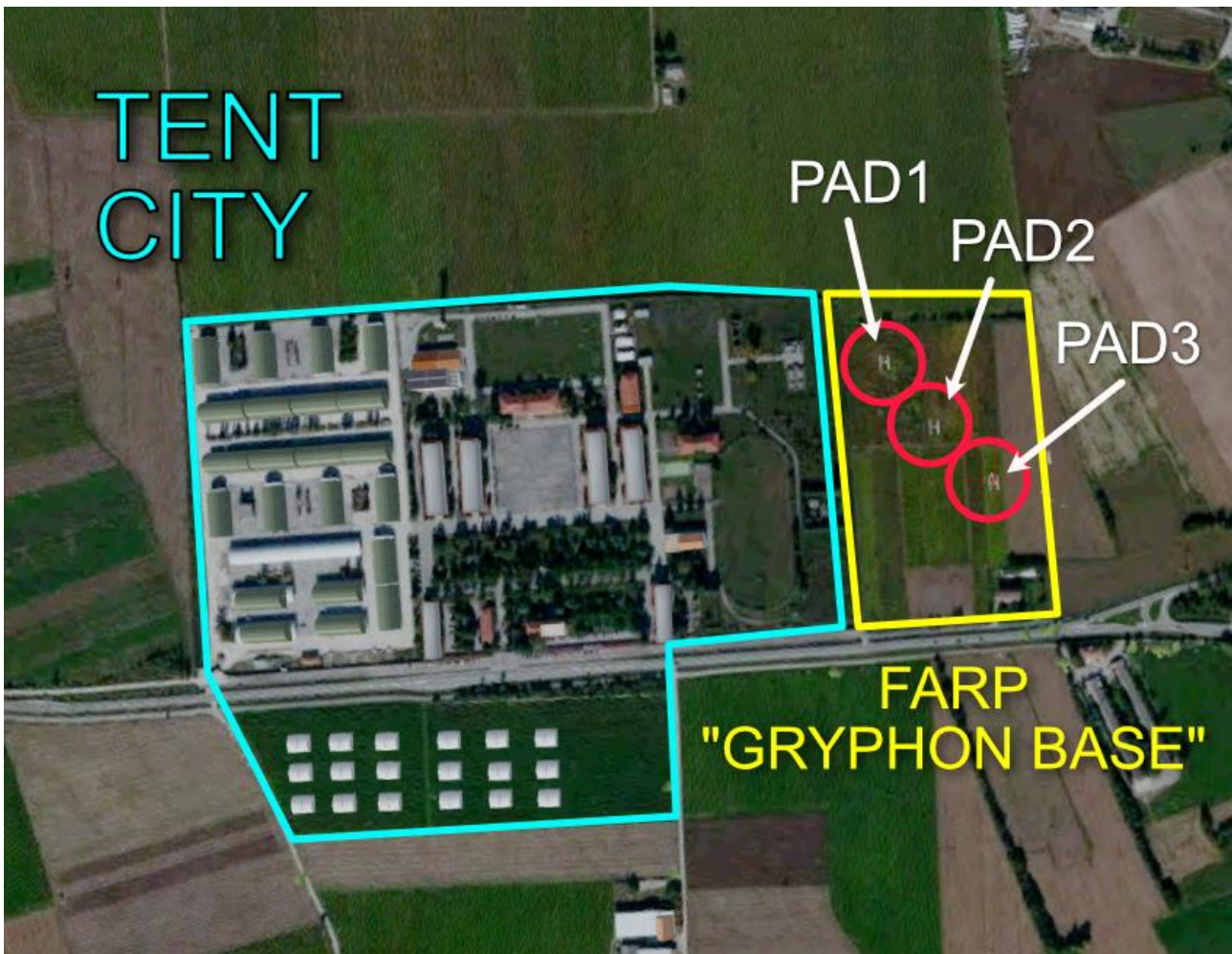


7. PARKINGS

7.1. LIPI PARKINGS



7.1. FARP "GRYPHON BASE" PARKINGS



8. PROCEDURES

8.1. LIPI GND PROCEDURES

- Taxi: as instructed by TWR
- Take off and Landing: Onto the runway. **DO NOT take off from the Apron**

8.2. LIPI FLIGHT PROCEDURES

ROUTES FROM/TO LIPI	
Dep:	After takeoff proceed direct to "Tesis" Ops Area
Arri:	After leaving the ops area, proceed direct to ROMEO point, if not instructed differently by ATC, then proceed to the Aerodrome (backup route via NOVEMBER only for ATC or safety reason when instructed)

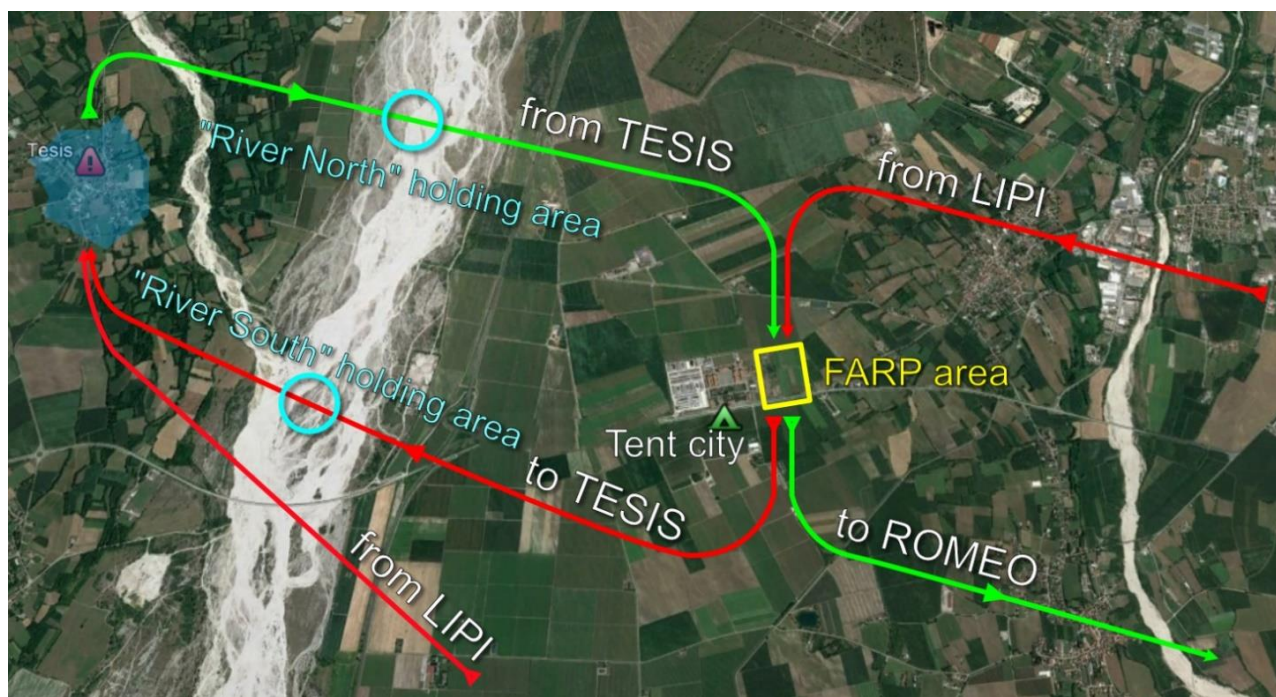


- Inside GRYPON AREA, traffic will be in contact with "Gipsy". Pilots may be requested to monitor also Aviano APP in case of necessity.

8.3. FARP “GRYPHON BASE” GND PROCEDURES

- 3 Pads available for disembarking and quick stationing.
- Reful: **“Hot refuel”** (with engines running) procedures for fast “turnaround”

8.4. FARP “GRYPHON BASE” FLIGHT PROCEDURES



TESIS	
Departure:	northbound ONLY
Arrival:	From south ONLY

FARP	
Departure:	Southbound ONLY
Arrival:	From north ONLY

River North/South holding areas: Hold over the river when instructed by ATC due to high traffic or safety reasons (low visibility)

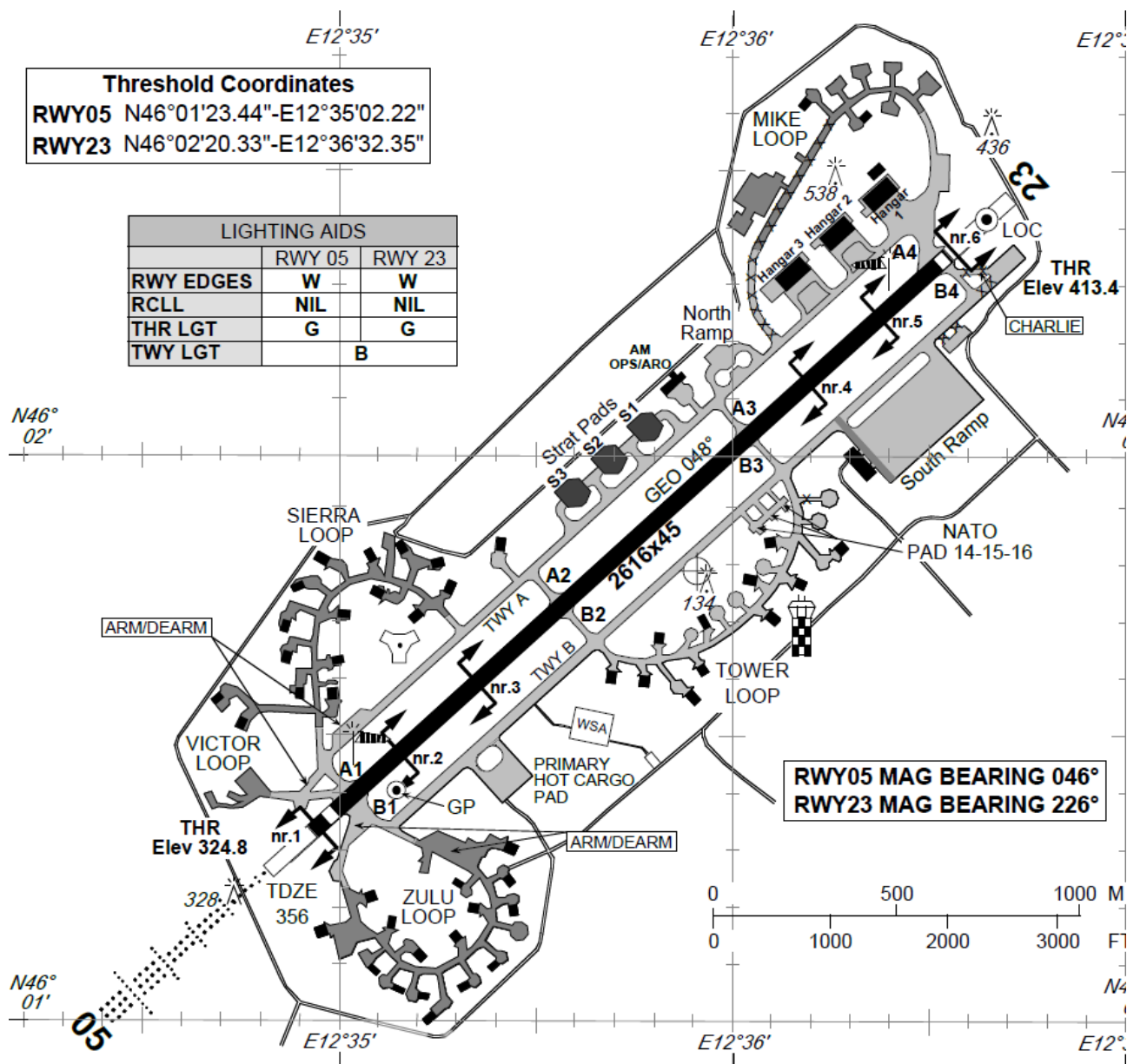
8.5. “TESIS Area” GND/FLIGHT PROCEDURES

- VMC: max 3 helicopters allowed at once.
- Below VMC: only 1 helicopter at once in **special VFR** (requested to LIPA_APP)

In case of visibility less than 1500mt, exercise will be momentarily suspended.
Exercise Organizers will decide if continuing for IFR recovery or for a VMC simulation

8.6. ALTERNATE INFO

- In case of Recovery to LIPA Aviano Airport, proceed direct to the field or direct to **AVI TAC**
- Parking: as instructed by ATC



9. EVACUATION REPORT

After completion of every evacuation sortie, pilot shall report to “GIPSY” the following items:

EVAC REPORT	
1)	Number of People evacuated
2)	Number of People that need medical assistance
3)	Other relevant Info
4)	Intention at “Gryphon Base” after landing (refuel - new sortie - RTB to LIPI)

9.1. COMMS EXAMPLES WITHIN GRYPHON AREA

“GIPSY” WILL PROVIDE TRAFFIC INFORMATIONS CONCERNING TRAFFIC OPERATING WITHIN GRYPHON AREA

CHECK-IN AFTER DEPARTURE	
PIL	GIPSY, RESCUE01 DEPARTED FROM RIVOLTO INBOUND TO TESIS AREA
RCC	RESCUE01, GIPSY REPORT APPROACHING TESIS AREA
PIL	[READ-BACK INFORMATIONS]
APPROACHING OPERATIONAL ZONE	
PIL	GIPSY, RESCUE01 APPROACHING OPERATIONAL ZONE
RCC	RESCUE01, GIPSY [ADDITIONAL TRAFFIC INVOLVED IN OPERATIONS] REPORT LEAVING THE AREA TIME CHECK 1545Z
PIL	[READ-BACK INFORMATIONS]
LEAVING OPERATIONAL ZONE WITH EVAC REPORT AND FURTHER INTENTIONS	
PIL	GIPSY, RESCUE 01, LEAVING TESIS INBOUND GRYPHON BASE, REPORT READY TO COPY EVACUATION REPORT
RCC	RESCUE01, GIPSY ready to copy
PIL	GIPSY, RESCUE01 EVAC REPORT 8 PEOPLE EVACUATED, 4 PEOPLE REQUIRE MEDICAL ASSISTANCE, 1 OF THEM 76 YEARS OLD HAS LEFT ARM BROKEN, AFTER LANDING [WE WILL REQUEST REFUELING, WE WILL RETURN TO OPERATONAL ZONE]
APPROACHING OPERATIONAL ZONE	
PIL	GIPSY, RESCUE01 APPROACHING OPERATIONAL ZONE
RCC	RESCUE01, GIPSY [ADDITIONAL TRAFFIC INVOLVED IN OPERATIONS] REPORT LEAVING THE AREA TIME CHECK 1545Z
PIL	[READ-BACK INFORMATIONS]
AFTER LANDING	
PIL	GIPSY, RESCUE01 ON THE GROUND AT GRYPHON BASE
RCC	RESCUE01, GIPSY ROGER

10. MISSION TIMELINE

TIME	ITEMS
1530z	Briefing On Discord Channel
1550z	Start Of Operations
1750z	End Of Operations
1750z	Start Of Debriefing On Discord Channel
1800z	End Of Debriefing On Discord Channel

11. OPS CHANNELIZATION

All Rescue intercomms will be conducted on dedicated [DISCORD CHANNEL \(LINK\)](#)

12. MISC

12.1. SCENERIES DOWLOAD

Available few days before the event.

12.2. vPAR configuration

In case you would like to perform a PAR Approach at LIPI or LIPC (for CARGOs), just ask in advance the configuration data by sending an email to it-specialops@ivao.aero.

[Here](#) you can find a quick guide for vPAR setup.

Then at the Event, just insert on item 18 of FPL the following:

“RMK/REQUEST PAR APP AT XXXX”

12.3. JOINFS SERVER

To add more realism and smooth “formation flight” you can install and use JoinFS. By the way it is **not mandatory** for this event.

JoinFS benefits:

- Cross-Platform Multiplayer Across **Prepar3d, X-Plane, Fsx** And **Fsx:Steam**.
- Decentralized Hostless **Peer-To-Peer** Network.
- **Smooth** Jitter-Free Live Movement Of Aircraft.
- **Shared Cockpit**, Unlimited Passengers And **Multi-Role** Co-Pilot Cockpit.
- Suitable For Virtual Pilot **Training** And Instruction.
- Hub Network Allows Anyone To Launch And Advertise A Publicly Listed Session.
- **Communications** System Included.
- **Record** And Save Multiple Aircraft To A File And Play Back Recordings Live Over The Network.
- Simple **model matching** allows you to substitute any aircraft model instantly while connected.

For more informations:

- Download link: <https://pmem.uk/joinfs/joinfs.msi>
- Manual: https://pmem.uk/joinfs/joinfs_v1-1-4-stable_guide.pdf

12.4. FORUM DISCUSSION

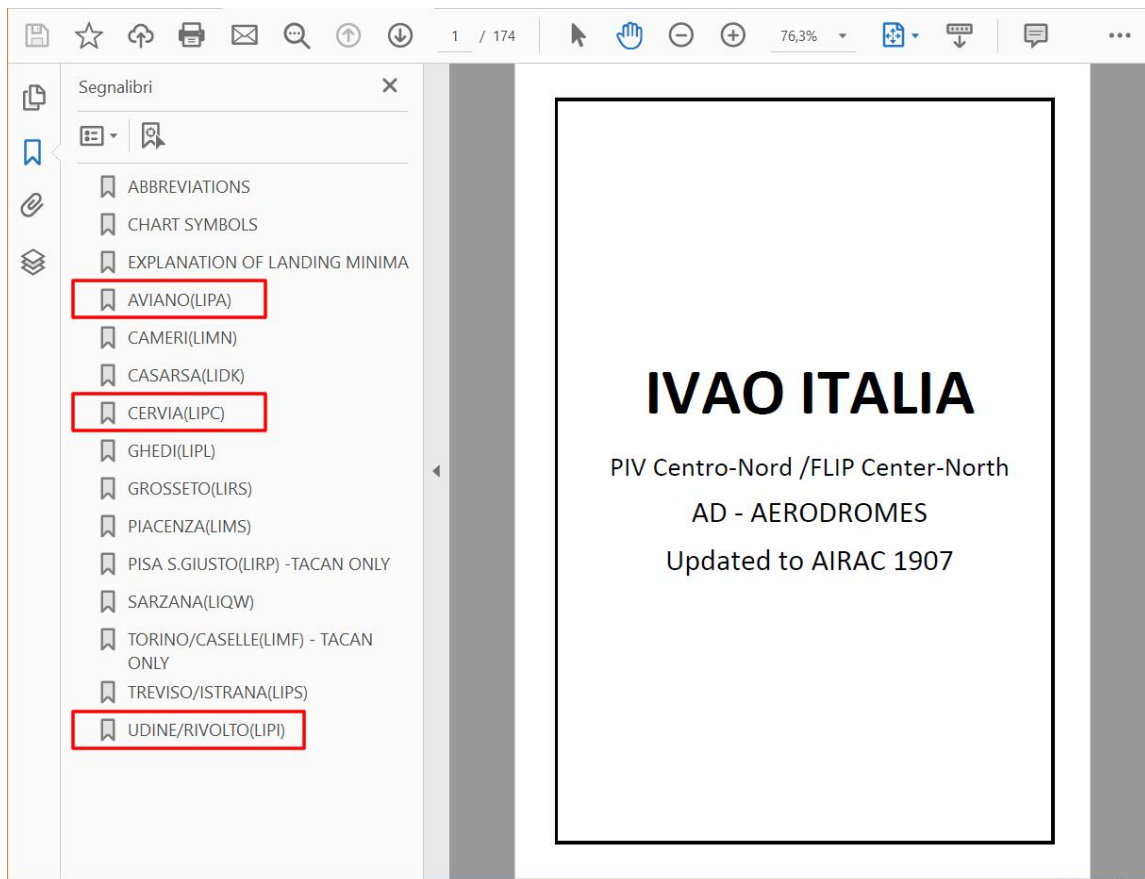
You can find the topic for any discussion on SO HQ Forum [HERE](#)

12.5. REGULATIONS and CHARTS

Login in to <https://ivao.it/> (NO registration required),

then click here <https://ivao.it/special-operation/regulations-and-charts/>

Aerodrome charts are named vPIV/FLIP. For this event you need to download the “North” part.



12.6. CONTACTS

For any doubt contact it-specialops@ivao.aero

Enjoy the Event!