



Emergency Evacuation Briefing



Content

Introduction: 2

Plan of Mission:..... 3

Rules and Regulations:..... 4

Mission plan:..... 5

ATC Position: 6

Introduction:

Persian Gulf Airport:

The airport has been operating since 2005 and, though small, enjoys one of the most modern passenger terminal buildings recently built in the region. There are frequent scheduled and charter passenger flights done in this airport.



South Pars Gas-Condensate field:

The South Pars/North Dome field is a natural-gas condensate field located in the Persian Gulf. It is by far the world's largest natural gas field, with ownership of the field shared between Iran and Qatar.

According to the International Energy Agency (IEA), the field holds an estimated 1,800 trillion cubic feet (51 trillion cubic metres) of in-situ natural gas and some 50 billion barrels (7.9 billion cubic metres) of natural gas condensates. On the list of natural gas fields it has almost as much recoverable reserves than all the other fields combined. It has significant geostrategic influence.

Plan of Mission:



We received a distress call from southern pars gas platform stating due some system malfunction and safety concerns they have decided to initiate emergency evacuations.

Time is of the most importance and they requested that this evacuation runs as fast as possible.

Platform only equipped with one heliport and coordination with platform flight coordinator with precision in landing is of utmost importance.

Rules and Regulations:

Pilot must have Microsoft Flight Simulator X or Lockheed Martin Prepar3D.

Pilot must be active member of IVAO and register for participation in event on the Event Page.

Only type allowed for this event is rotorcrafts.

It is mandatory to have "RMK/IRSOEVENT" In the flight plan remark section.

User must complete all mission stages, otherwise will be removed from participants list.

Max Disconnection time is 5 minutes.

Maximum altitude is 1500 feet above ground level.

All pilot must maintain separation from GAT (General Air Traffic).

In order to be able to complete the mission be aware of your equipments. We recommend flying in daylight time in your simulator.

All pilot must download and install required files from mission briefing page.

Mission plan:

Departure from Persian Gulf Airport (OIBP).

Continue on magnetic heading 216 degrees.

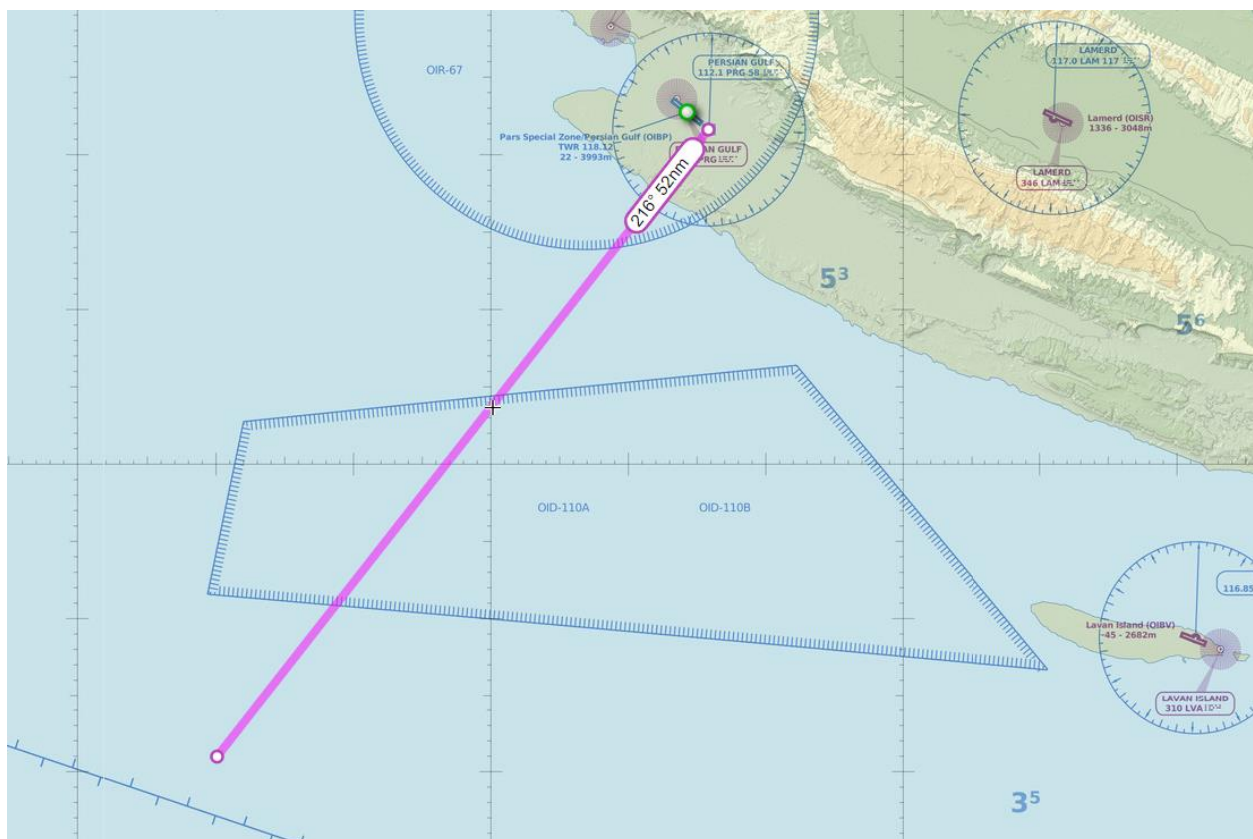
Distance from Persian Gulf Airport is 52 NM.

After having visual on platform, for landing on helipad, pilot must contact Asalouyeh tower for coordination for landing on platform helipad.

Landing at South Pars Gas platform Helipad.

Be stationary on the Helipad for at least 1 min.

Fly Back to Persian Gulf Airport on the magnetic heading 030 degrees.



ATC Position:

Persian Gulf Tower (OIBP_TWR):

Control all operation takeoff and landing in the Persian Gulf Airport.

Control all traffic in the Event enroute platform.

Frequency is 118.125.

Callsign: Persian Gulf Tower.

Asalouyeh tower (OIBI_TWR):

Control all operation takeoff and landing in the platform.

Frequency: 121.725

Callsign: Pars