



# IVAO

Special Operations Department

## Coningsby Real Operations Event Master Plan

07th December 2024

13:00z - 17:00z (UTC)



# CONINGSBY

EGXC

RAF CONINGSBY

7TH DEC

13z - 17z

Real Operations

**Check out our Website & Socials**

[www.xu.ivao.aero](http://www.xu.ivao.aero) | [@IVAOXU](https://twitter.com/IVAOXU)



## Introduction

IVAO XU's Special Operations Department would like to invite you to RAF Coningsby Real Operations. During this event, we will simulate the daily activities of the busy Royal Air Force (RAF) station.

RAF Coningsby is located in the west of England and is home to 3 front-line Typhoon (Eurofighter) squadrons and 2 Support Squadrons. The base is a hive of activity with all RAF typhoon pilots learning to fly this impressive aircraft at the base while it is also one of 2 in the UK that stands ready with QRA 24/7 to react to any threats to national security. Coningsby is also home to the Battle of Britain Memorial Flight who commemorate those who fallen in service to the UK, through maintaining and flying historic World War 2 aircraft.

This event allows pilots to simulate the real operations of RAF Coningsby. During the event, you will have the opportunity to perform multiple missions, from practising your low-level navigation to practising basics in air combat manoeuvres.

## Location

Airfield(s): **RAF Coningsby, EGXC**

Airspace : **D323 & London FIR**

## Time and Date

Date : **07th December 2024**

Time : **1300z - 1700z**

## Registration

Registration is mandatory for this event please register [here](#).



## Contents

<a href="#">Introduction</a>	<a href="#">1</a>
<a href="#">Contents</a>	<a href="#">2</a>
<a href="#">Event Briefing</a>	<a href="#">3</a>
<a href="#">Situation</a>	<a href="#">3</a>
<a href="#">Mission</a>	<a href="#">3</a>
<a href="#">Mission 1 - Low-Level Navigation</a>	<a href="#">3</a>
<a href="#">Mission 2 - Air To Ground Weopns Practice</a>	<a href="#">4</a>
<a href="#">Mission 3 - Air Display Practice</a>	<a href="#">4</a>
<a href="#">Mission 4 - Air Combat Manoeuvres</a>	<a href="#">4</a>
<a href="#">Execution</a>	<a href="#">5</a>
<a href="#">Mission 1 - Low-Level Navigation</a>	<a href="#">5</a>
<a href="#">Mission 2 - Air To Ground Weopns Practice</a>	<a href="#">7</a>
<a href="#">Mission 3 - Air Display Practice</a>	<a href="#">9</a>
<a href="#">Mission 4 - Air Combat Manoeuvres</a>	<a href="#">10</a>
<a href="#">Charts and Airfield Information</a>	<a href="#">11</a>
<a href="#">Runways</a>	<a href="#">11</a>
<a href="#">Parking</a>	<a href="#">11</a>
<a href="#">Charts</a>	<a href="#">11</a>
<a href="#">Scenery</a>	<a href="#">13</a>
<a href="#">EGXC - RAF Coningsby</a>	<a href="#">13</a>
<a href="#">Donna Nook Range</a>	<a href="#">13</a>
<a href="#">AIPs and Links</a>	<a href="#">14</a>
<a href="#">Contacts</a>	<a href="#">14</a>
<a href="#">Suplementy Information</a>	<a href="#">15</a>
<a href="#">Low-Level Route Nav Log</a>	<a href="#">15</a>

# Event Briefing

## Situation

- RAF Coningsby will be open for the event, with arrivals and departures permitted during the event.
- Full Military control will be online, and XU SO staff will be available for assistance during the event.
- A brief will be held at the event start time, 1300z, in the HQ SO discord to update all pilots on the weather and any NOTAMs that are in effect.
- There are no “hostile” elements during the event, with only simulated air-to-air combat being performed between members of the event. No non-participating aircraft are to be disturbed by participants.
- All pilots shall park on the ASP for this mission (See charts section)

## Mission

**All pilots are required to complete at least 1 of the missions below. Detailed descriptions of each mission can be found under the Execution section of the brief.**

### Mission 1 - Low-Level Navigation

Aircraft Type: Fighter Jet/ Turbo Prop Trainer / Trainer

Location: LFA17 (Lake District)

Description: Practice low-level flying through the lake district.

**Mission 2 - Air To Ground Weapons Practice**

Aircraft Type: Fighter Jet

Location: Dona Nook Range, D307

Description: Practice air-to-ground engagement at the Donna Nook range.

**Mission 3 - Air Display Practice**

Aircraft Type: Historic fighter / Bomber / Transport

Location: Scampton, R313

Description: Practice displaying a historic aircraft over the old RAF Scampton.

**Mission 4 - Air Combat Manoeuvres**

Aircraft Type: Fighter Jet

Location: D323

Description: Perform high-energy manoeuvres practising energy management. If/when multiple aircraft are in the danger area, you will be guided to a simulated air-to-air engagement to merge and beyond.

## Execution

### Mission 1 - Low-Level Navigation

**Aircraft Type:** Fighter Jet/ Turbo Prop Trainer / Trainer

**Location:** LFA17 (Lake District)

### Description

Practice low-level flying through the lake district. You are to navigate via your own route (Suggested route below) to the start of the low-level route provided. You should navigate the route, taking extra care not to overfly areas of the population.

### Restrictions

Minimum Altitude: 250ft from terrain in all directions

Maximum Speed: 500Knts (OAT)

### Advised route to and from the low-level route :

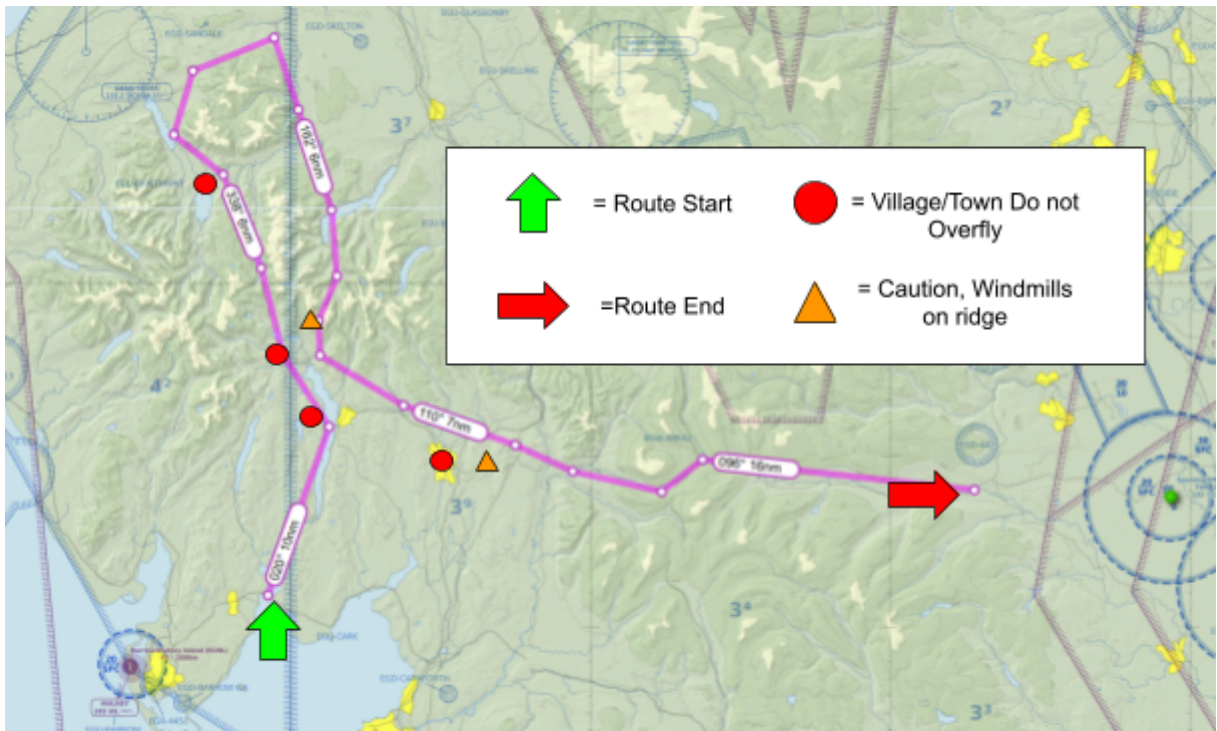
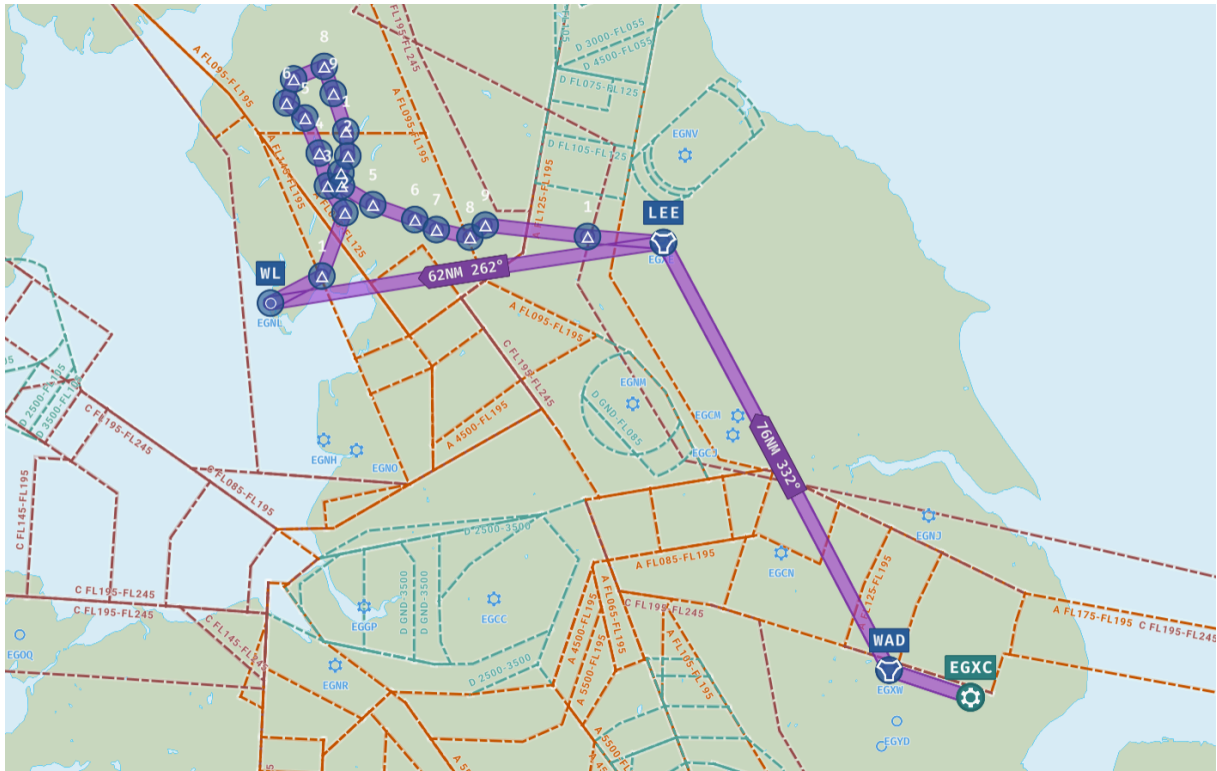
DCT WAD DCT LEE DCT WL DCT \\LFA17\\ DCT LEE DCT WAD DCT

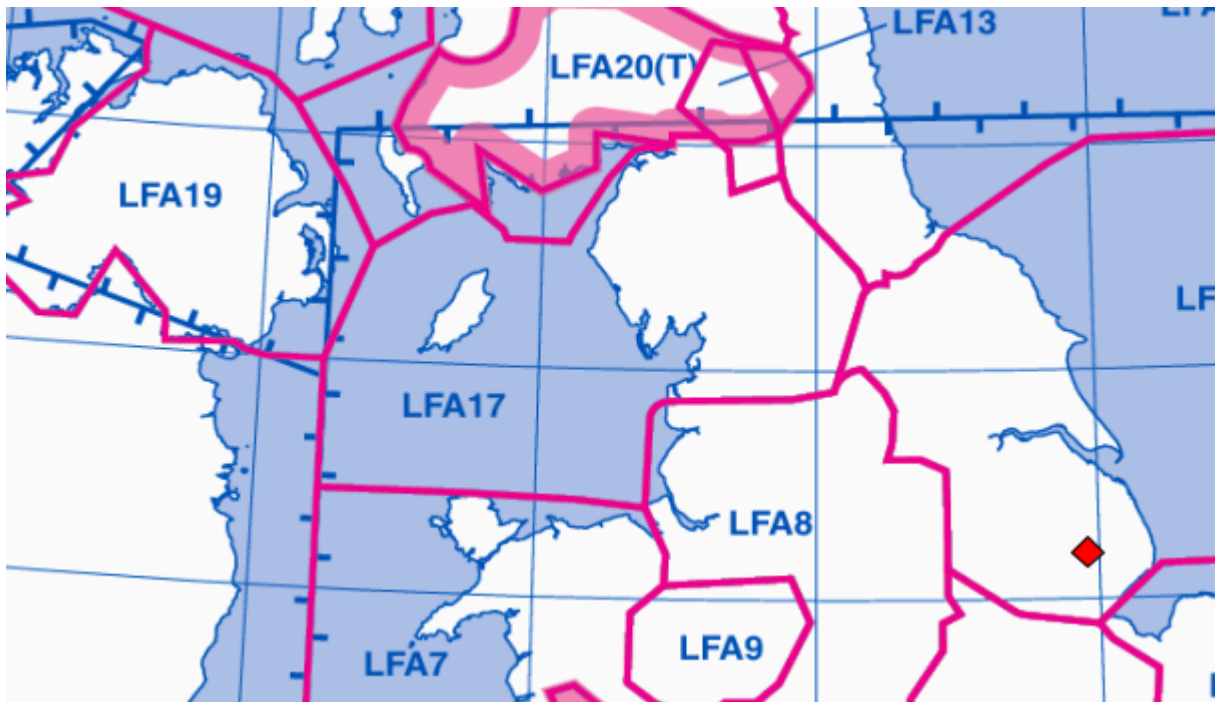
### Low-Level Route:

541151N0030214W DCT 542140N0025607W DCT 542549N0030044W DCT  
543052N0030255W DCT 543616N0030642W DCT 543835N0031138W DCT  
544216N0030944W DCT 544411N0030137W DCT 544002N0025912W DCT  
543414N0025553W DCT 543025N0025521W DCT 542749N0025711W DCT  
542549N0025702W DCT 542254N0024842W DCT 542036N0023733W DCT  
541904N0023149W DCT 541753N0022255W DCT 541945N0021851W DCT  
541759N0015142W

### Nav Log

If you want to fly the Low-level route without the assistance of GPS, [HERE](#) is provided with a Nav Log for the low-level route, flown at 450knts.





## Mission 2 - Air To Ground Weapons Practice

**Aircraft Type:** Fighter Jet

**Location:** Dona Nook Range, D307

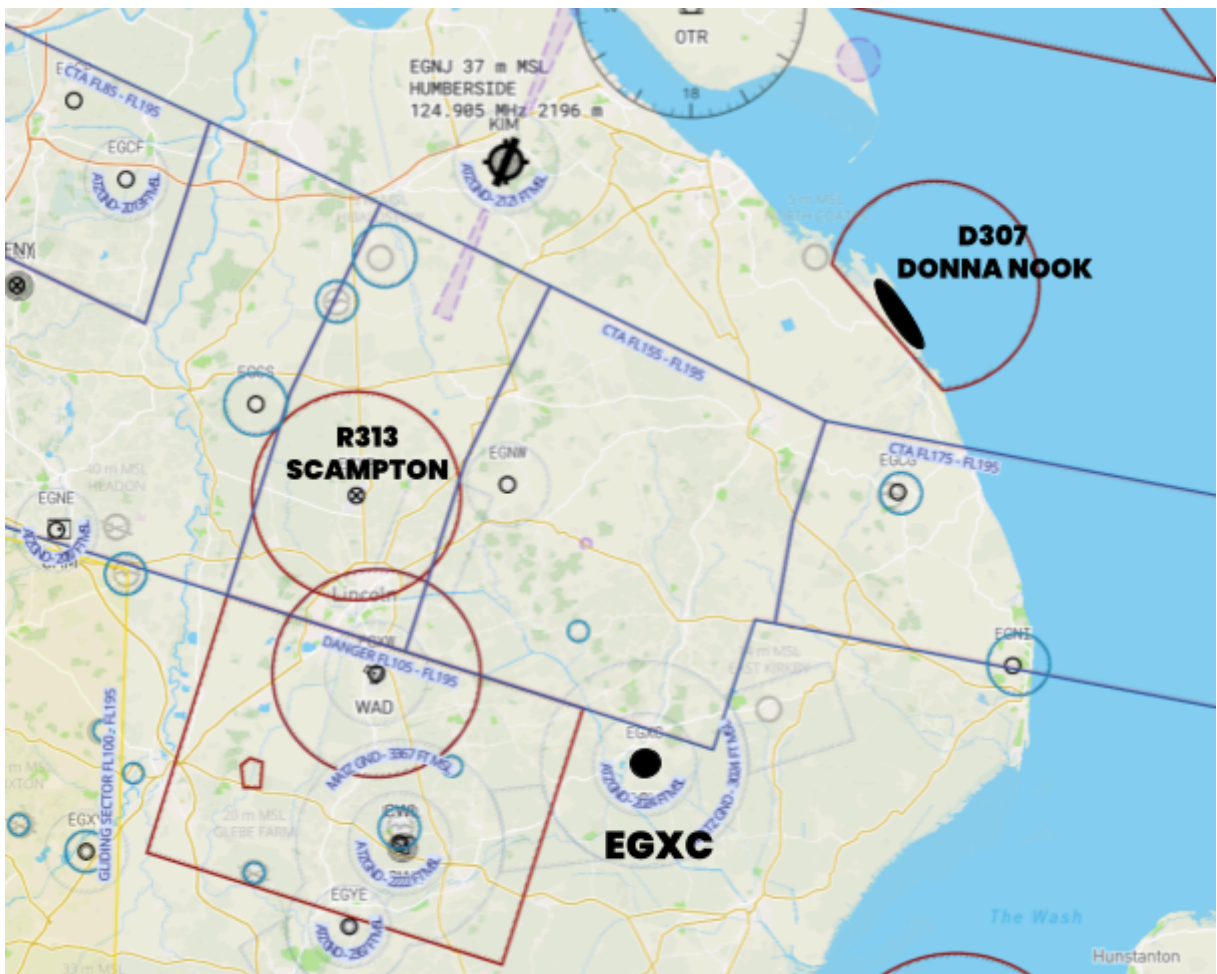
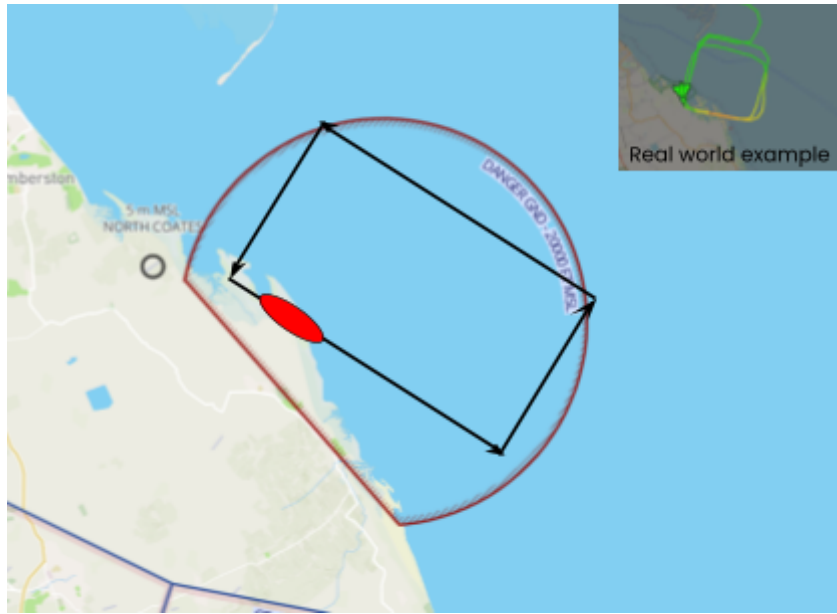
### Description

Practice air-to-ground engagement on the Donna Nook range. The Range is located North of Coningsby and is located in the D307 danger area, with the targets located on the coast line.

Donna Nook range is best for direct deployment of weapons such as rockets and guns due to the targets available and the tight range circuit.

You are to complete at least 3 passes of the range, this can either be "Cold" (No weapons released) or/and "Hot" (Weapons released). You should use a Box style pattern trying to keep within the danger area limits but slightly leaving this is not an issue as shown below.





### Mission 3 - Air Display Practice

**Aircraft Type:** Historic fighter / Bomber / Transport

**Location:** Scampton

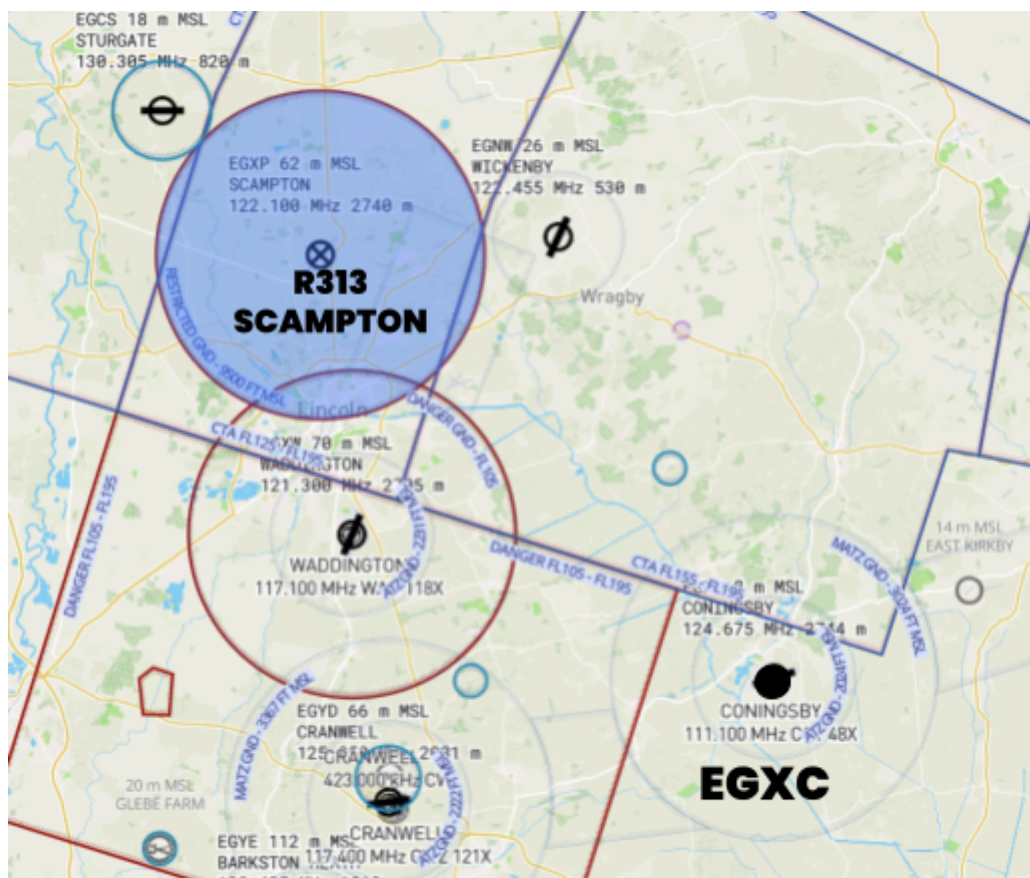
#### Description

Practice displaying a historic aircraft over the old RAF Scampton. RAF Scampton is disused; therefore, the runway can not be utilised but a runway is still used as a reference point for the Royal Air Force aerobatic display team the Red Arrows to practice their displays. But during the event, we will utilise this airspace so that RAF Coningsby is closed while pilots display.

During the event, the restricted airspace will be available for pilots to practice their displays for a minimum of 10 minutes. Pilots are not required to stay within the Restricted airspace limits.

Once you have completed and departed the restricted airspace you may not re-enter without new clearance

Maximum Display Height: 9000ft



## Mission 4 - Air Combat Manoeuvres

**Aircraft Type:** Fighter Jet

**Location:** D323

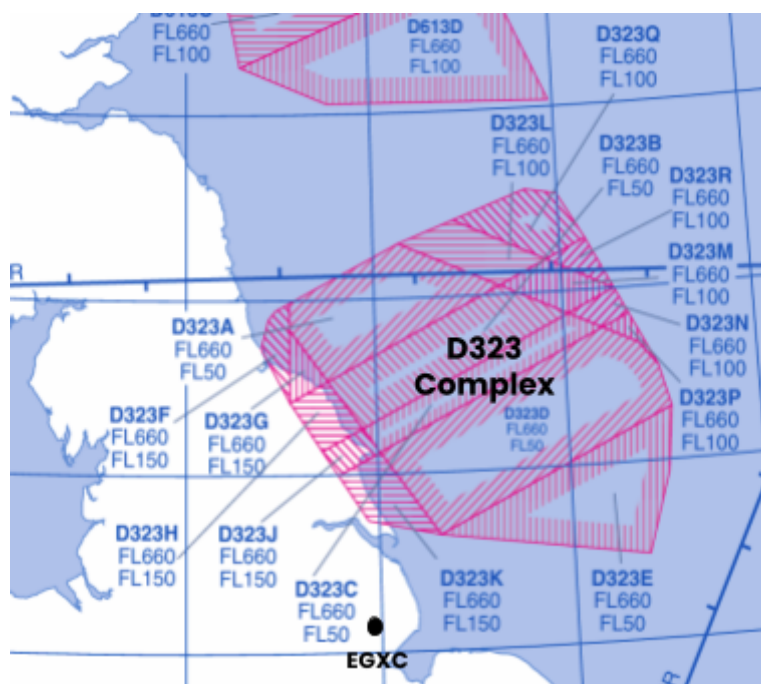
### Description

Perform high-energy manoeuvres practising energy management. If/when multiple aircraft are in the danger area, you will be guided to a simulated air-to-air engagement to merge and beyond.

Pilots must request permission to enter D323 from Swanwick Control (EGVV\_CTR) and they will assign you an area of the complex to operate in and a block. Once multiple aircraft are using the danger area the pilots will be asked if they would like to perform Air combat manoeuvres with the other elements. This will primarily be practising following ground control and self-control to merge with a simulated hostile element.

It is not required that any pilot partakes in ACM and they may wish to perform manoeuvres solo. But we strongly recommend that all pilots should attempt this as it will be a good learning experience and the complexity will be adjusted to the pilots partaking.

Examples of phraseology can be found on the HQ wiki [HERE](#).





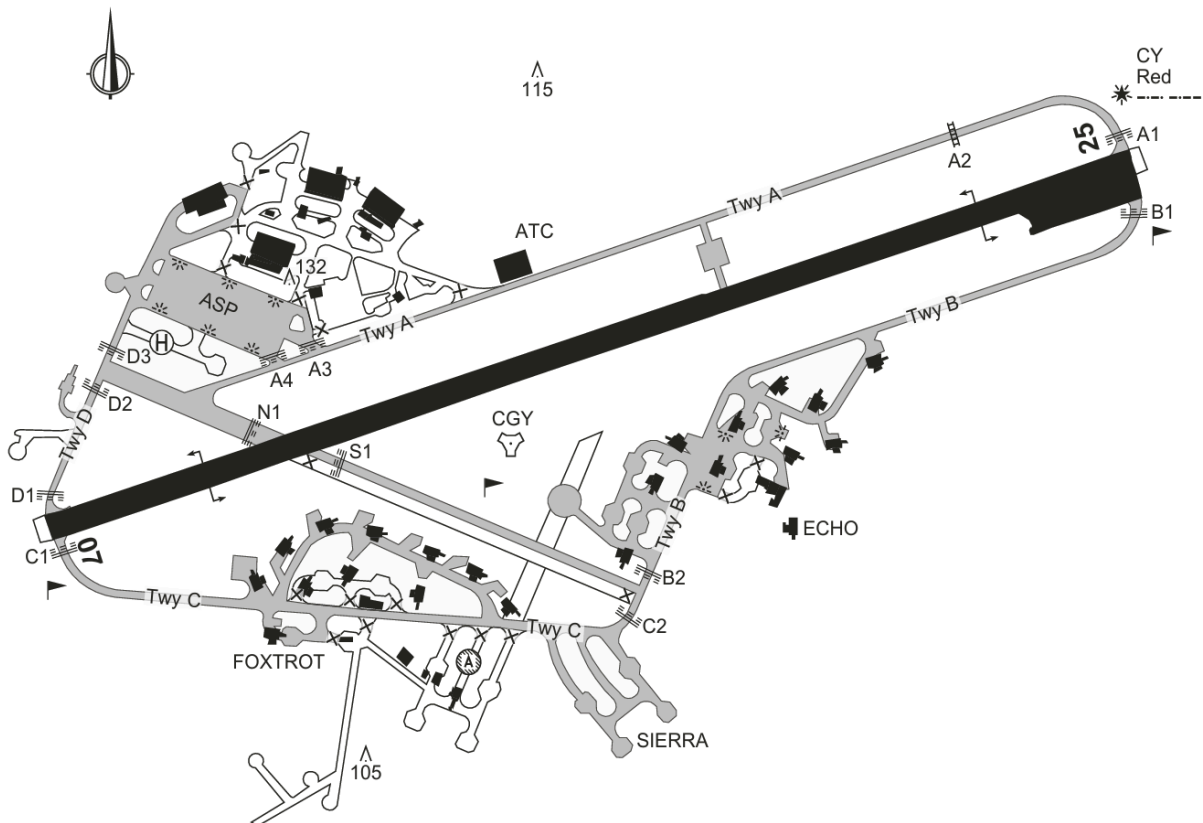
# Charts and Airfield Information

## RAF Coningsby - EGXC

### Runways

Runway	Length	ILS	Circuit	Height
07	2744m	NONE	Left Hand	1000ft
25	2744m	253° 111.150	Right Hand	on QFE

### Parking



### Charts

UK Mill AIP-AD-EGXC: [EGXC-Coningsby-Combined.pdf](#)



### ATC

Radio Callsign	Identifier	Frequency
Swanick Military	EGVV_CTR	127.450
Coningsby Approach	EGXC_APP	119.200
Coningsby Tower	EGXC_TWR	124.675
Coningsby Ground	EGXC_GND	121.850

### Tacan Routes

[UK Mill AIP ENR 6-1](#)



## Scenery

### EGXC - RAF Coningsby

Simulator	Link
MSFS	<a href="#">EGXC - RAF Coningsby for Microsoft Flight Simulator   MSFS</a>
Xplane	<a href="#">X-Plane Scenery Gateway</a>
P3D/FSX	<a href="#">Scenery EGXC RAF Coningsby for P3D - United Kingdom 1.0 - Military AI Works</a>

### Donna Nook Range

Simulator	Link
MSFS	<a href="#">Donna Nook Air Weapons Range- ICAO - DNAWR for Microsoft Flight Simulator   MSFS</a>
Xplane	–
P3D/FSX	<a href="#">FSX – Scenery RAF Donna Nook Bombing Range Area – Welcome to Perfect Flight</a>

## AIPs and Links

Link	
UK Mill AIP	<a href="#">UK Mil AIP   AIP</a>
UK Civil AIP	<a href="#">eAIS Package United Kingdom</a>
XU Wiki	<a href="#">XU Division Wiki   IVAO Documentation Library</a>
HQ Wiki	<a href="#">Special Operations Department   IVAO Documentation Library</a>
SO Discord	<a href="https://sod.ivao.aero/discord">sod.ivao.aero/discord</a>

## Contacts

Type	Means	Notes
Email	<a href="mailto:xu-soc@ivao.aero">xu-soc@ivao.aero</a> <a href="mailto:xu-soac@ivao.aero">xu-soac@ivao.aero</a>	
Forum	<a href="http://xu.forum.ivao.aero/">http://xu.forum.ivao.aero/</a>	
Discord	<a href="https://xu.ivao.aero/discord">https://xu.ivao.aero/discord</a>	IVAO XU Members only
	<a href="https://sod.ivao.aero/discord">https://sod.ivao.aero/discord</a>	IVAO HQ-SOD Discord Look for XU-SOC or XU-SOAC

## Supplementary Information

### Low-Level Route Nav Log

Speed: 450knts

Height: 350ft

Description		LAT LON	
Mag Heading	Distance NM	ETE (Min)	ETO (Min)
Leven Viaduct		541151N0030214W	
020	10.5	1.4	1.4
Bowness-on-Windermere (Town)		542140N0025607W	
327	5	0.7	2.1
Small Lake (Loughrigg Tarn) NE of Road		542549N0030044W	
346	5.2	0.7	2.8
The southern tip of Lake Thirlmere		543052N0030255W	
338	5.8	0.8	3.6
Keswick (Town)		543616N0030642W	
310	3.7	0.5	4.1
West edge of Lake Derwent		543835N0031138W	
017	3.9	0.5	4.6
Small Lake (Over Wate)		544216N0030944W	
068	5.1	0.7	5.2
Hesket Newmarket (Village)		544411N0030137W	





162	4.4	0.6	5.8
T junction in Road		544002N0025912W	
162	6.1	0.8	6.6
North Edge of Lake Ullswater		543414N0025553W	
176	3.8	0.5	7.1
Small Lake (Brothers Water)		543025N0025521W	
203	2.8	0.4	7.5
Ridgeline (Caution windmills if incorrect saddle taken)		542749N0025711W	
178	2	0.3	7.8
Ambleside (town)		542549N0025702W	
121	5.7	0.8	8.5
Staveley (Villiage)		542254N0024842W	
109	6.9	0.9	9.5
Windmills (Caution)		542036N0023733W	
114	3.7	0.5	10
Sedbrehg (Villiage)		541904N0023149W	
102	5.3	0.7	11
Dense Forest ( LandmarK0		541753N0022255W	
051	3	0.4	11
Rail Crossing and T-Junction		541945N0021851W	
096	16	2.1	13
Wensley (Village)		541759N0015142W	