



On behalf of Slovak division, we kindly invite you to our special operations event called SK Exercise. You can choose from two tasks in this mission:

1. Paradrop
2. Combat Air Patrol

Event will take place on 3rd March 2020 starting at 18:00Z
Tasks are described on the next pages.

There will be used two airports during the event:

- LZMC (Malacky) for paradrop mission
- LZSL (Sliac) for CAP mission

As LZMC is military base only, departing traffic shall contact LZMC_APP or LZBB_MIL_CTR for mission clearance and instructions.

On LZSL there are both civilian and military operations. LZSL_TWR and LZSL_APP are controlling both types of traffic. If no ATC will be online in LZSL, separation will be provided by LZBB_MIL_CTR.

Separation between civil and military traffic in FIR Bratislava will be provided by LZBB_MIL_CTR.

Expected ATC stations during event:

LZBB_MIL_CTR (Bratislava radar)

LZMC_APP (Malacky)

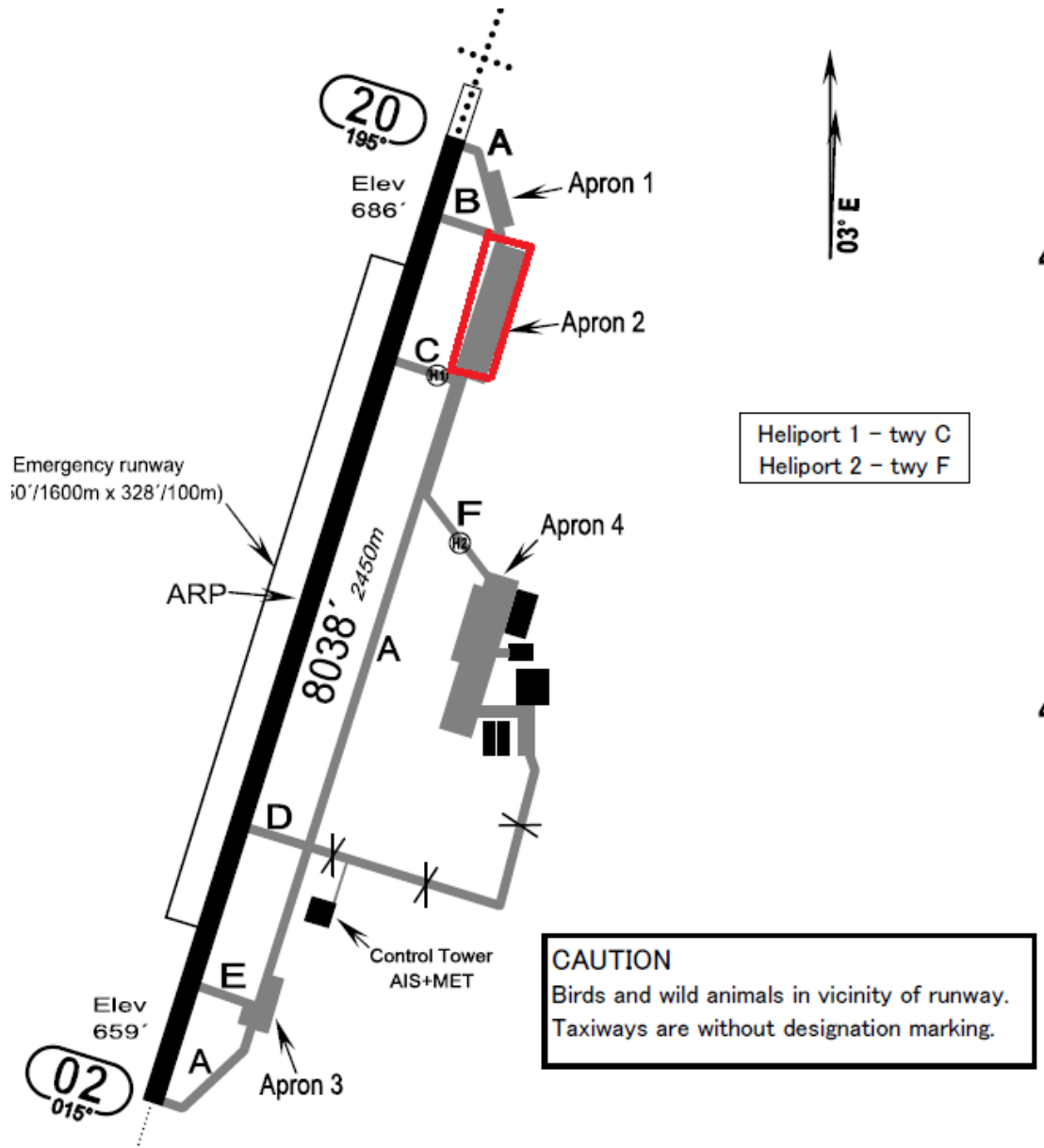
LZSL_APP (Sliac radar)

LZSL_TWR (Sliac tower)

Paradrop

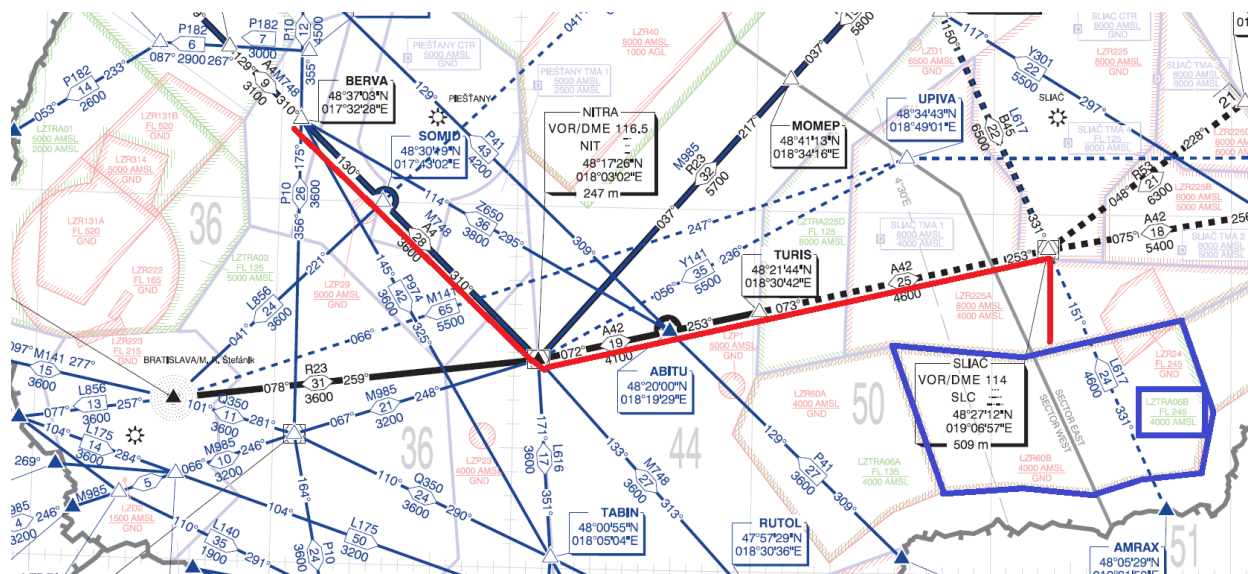
Malacky airbase (LZMC) is home of Slovak air force transport wing. In this mission, your task is to depart LZMC with paratroopers. Paradrop target zone is TRA06B (4000 AMSL – FL245).

Pilots departing from LZMC can connect on Apron 2 – North stands.

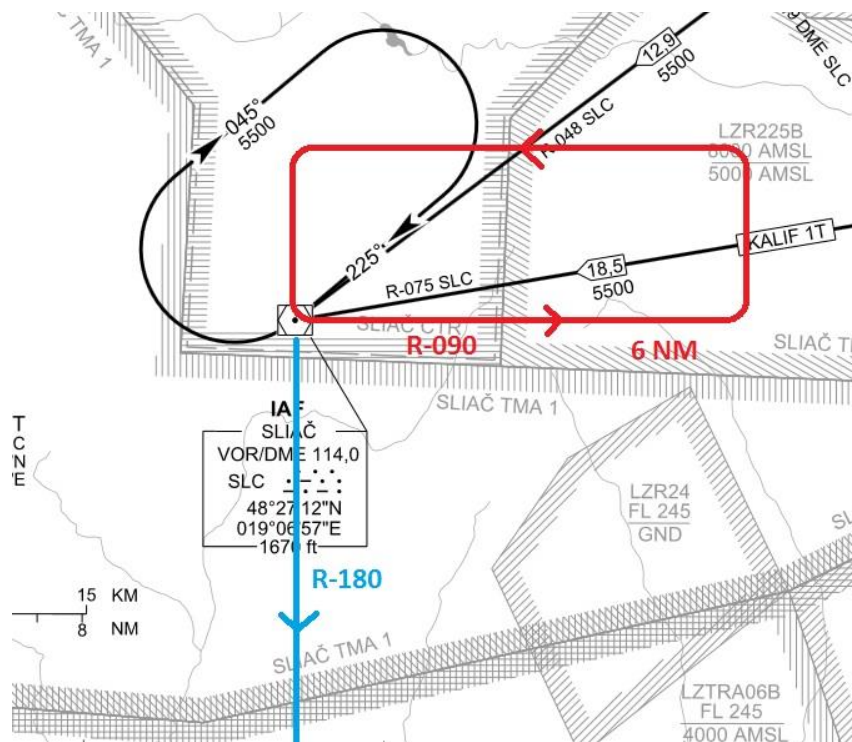


After departure from LZMC, follow standard departure route to BERVA climbing to FL180 – FL200. From BERVA, fly via A4 to NIT and then follow A42 to SLC. SLC VOR (114.000) is initial fix before entering TRA06B zone.

Area overview:



Reaching SLC, start holding at R-090 outbound SLC to 6 NM, left hand circuits (red lines). After ATC clears you to zone, leave SLC on radial R-180 outbound SLC (blue line).



After entering zone, maintain R-180 outbound SLC to distance 10NM. On this point, paradrop will start. Expect altitude 8000ft on this point. End point is on distance 15NM. proceed via paradrop. Leaving zone can be done via SLC or NIT, depending on ATC orders.. Next fly to Berva and return to LZMC.

Flight Route: Berva A4 NIT A42 SLC STAY1 SLC A42 NIT A4 Berva

Remarks: STAY1 //PARADROP TRA06B

Frequencies:

LZBB_MIL_CTR: 124.000

LZMC_APP: 119.425

Charts:

LZMC:

<https://www.ivao.sk/files/1334011389-LZMC.pdf>

Suggested airplanes: Antonov An-26, C-130, Lerov L-410, C-27 Spartan or similar

Paradrop zone definition:

PERMANENT RESTRICTED AREA TRA06B ESTABLISHED WITHIN AREA BOUNDED BY STRAIGHT LINES

JOINING SUCCESSIVELY: 482114N0192328E-481325N0192731E-480831N0192546E-480746N0191719E-480644N0191247E-480716N0190158E-481900N0185354E-481900N0184728E-481814N0190400E

LOWER LIMIT: 4000ft

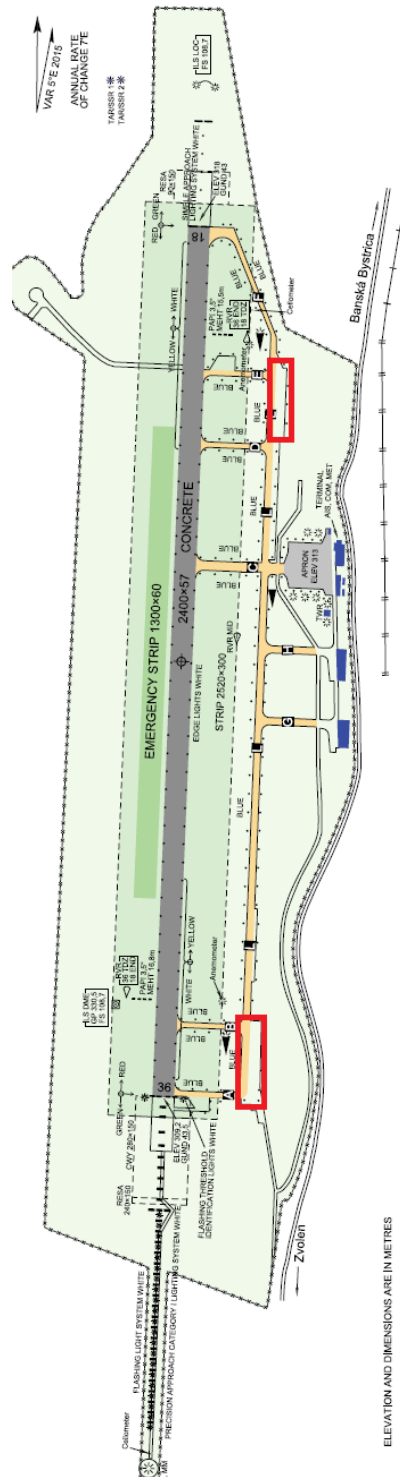
UPPER LIMIT: FL245

ACTIVATION: BY NOTAM, ON EMAIL REQUEST TO SK DIVISION AT LEAST 72 HRS IN ADVANCE

CONDITIONS OF USE: RESERVED AND DESIGNATED FOR EXCLUSIVE USE BY SPECIAL OPERATION FLIGHTS ONLY, NO OTHER AIR TRAFFIC SHALL ENTER RESTRICTED AREA

Combat Air Patrol

Sliac airbase (LZSL) is home of Slovak air force tactical wing. In this mission, you will proceed with Combat air patrol flight under IFR flight rules. Pilots departing from LZSL can connect on North stands or South stands.



After departing Sliac, you will fly via SLC, KSC, PPD, ZLA, PNY, JAN and back to SLC on FL 260 – FL320.

Flight Route: SLC DCT KSC DCT PPD DCT ZLA DCT PNY DCT JAN DCT SLC

Frequencies:

LZBB_MIL_CTR: 124.000

LZSL_APP: 119.150

SLC: 114.00

KSC: 108.20

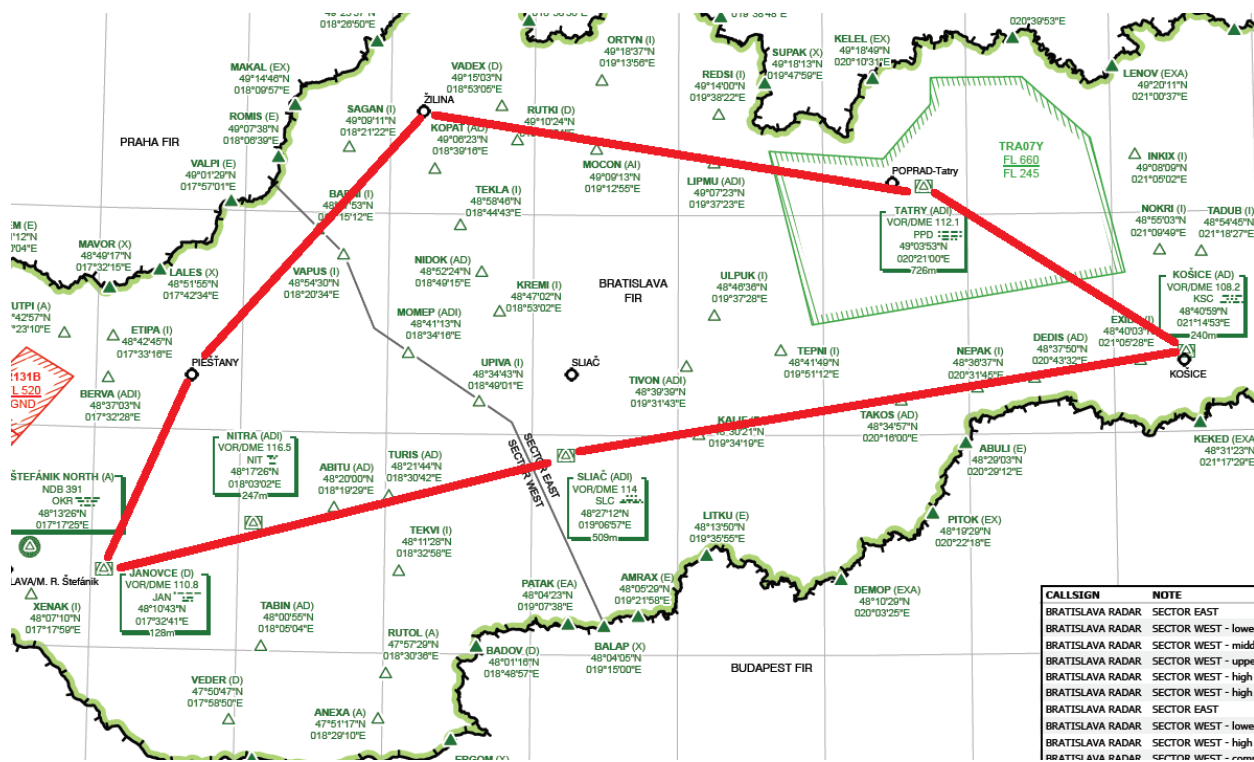
PPD: 112.10

ZLA: 404.0

PNY: 297.0

JAN: 110.80

Area overview:



Charts:

https://aim.lps.sk/eAIP/eAIP_SR/AIRAC208_EFF_12SEP2019/html/LZ-frameset-en-SK.html

Suggested airplanes: Mig-29, F-16, F-18, EF2000 or similar