



AVIATOR'S DAY

MILITARY AIR BRIDGE

MASTER PLAN

SPECIAL OPERATIONS EVENT ON "23TH OCT 2022"

 HQ Event



Military Air Bridge

 **IVAO**
SPECIAL OPERATIONS

 **IVAO** BR

 **23th October**

 **2300z - 0300z**

 **SBCO - SBSC**

 **SBSC - SBAN**

 **SBTA - SBSC**

 **SBSC - SBES**

Origin of Aviator's Day

The date celebrates professionals who fly airplanes, whether commercial, transport or private. People, like Santos Dumont, the "father of aviation", venture into the skies and take passengers to their destinations in one of the most wonderful inventions of the 20th century.

On October 23, 1906, Brazilian Alberto Santos Dumont becomes the first human being to fly! Aboard the 14-Bis, his creation, Dumont makes a flight in Campo Bagatelle, in France, which would be registered as the beginning of a great revolution in the means of transport on Earth: the airplane.

The tradition began stronger in military aviation, and in this way we came to honor Santos Dumont by making a great military parade of planes and helicopters in the virtual skies of Brazil among the main Brazilian air bases.

Rules:

For the fixed wing category, any transport and fighter aircraft are included, flights must be VFR or IFR, in compliance with the CAG general air traffic rules. **Supersonic flight is PROHIBITED.**

Rotary Wings, includes any type of Helicopter, including the V-22 Osprey, flights must be VFR or IFR, in compliance with the CAG general air traffic rules.

The pilot is not required to perform all legs of the route, the event will count towards the Special Operations Awards, a point will be given to those who participate in the event either as controller or flying.

PAR procedures are not allowed for the event.

OBS: Don't forget your MTL - X-CSL plane set correctly. Or we see you as a A319

Scenery:

We don't have specific scenarios; the default scenarios can be used without problem.

Airspace:

The event will not have a negative impact on air traffic control, we will not use any specific airspace and will not need to close or activate any airspace. We will have the presence of military and civilian controls working together.

Flight plan:

In the route field of the flight plan, you must enter the coordinate of the first gate of the REA or REH, the second coordinate will be that of the gate where the change of REA or REH will be made, and the speed that will be maintained.

In field 18 Remark, you must put the areas you are going to fly in the correct sequence, and ALT MAX REA.

7 - Aircraft Identification		8 - Flight Rules		Type of Flight	
<=(FPL Aircraft Identification		- V - VFR (Visual Flight)		- M - Military	
9 - Number		Type of Aircraft	Wake Turbulence Category	Equipment	Transponder
- 1		AS50 - AS-350 Ecureuil	/ L - Light	- GS	/ S
13 - Departure Aerodrome		Departure Time			
- Departure Aerodrome		1920			
15 - Cruising Speed		Level			
- N 120		VFR			
Route					
2256S04522W REA 224IS04460W N0130 DCT 2233S04409W N0130VFR REA 2242S04335W REA 2253S04332W					
16 - Destination Aerodrome		Total EET	Altn Aerodrome	2nd Altn Aerodrome	
- Destination Aerodrome		0000	Altn Aerodrome	2nd Altn Aerodrome	
18 Other Information					
DOF/220924 RMK/REA MIKE ECHO CHARLIE ALT MAX REA					
<input type="checkbox"/> World Tour					

A brief explanation of the flight rules in Brazil, here VFR flight is normally done within REA (special aircraft routes) and REH (special Helicopters routes) visual corridors created to improve the fluidity of air traffic. These routes are described in charts and use visual references, the links to the charts for each corridor are attached at the end of the document.

For the correct completion of the flight plan, in the ROTE field the pilot will enter the coordinates described below.

In field 18 remark, after the DOF the pilot will put the name of the especial route, followed by the phrase ALT MAX REA, which indicates that the pilot will maintain up to the maximum altitude of the special route, the altitude is described in the charts.

Routes:

The event will be divided into two categories each with its specific route, Fixed Wings and Rotary Wings.

Fixed Wings – Canoas airbase **SBCO** – Santa Cruz Airbase **SBSC** – Anapolis Airbase **SBAN**.

Suggested route IFR:

SBCO – SBSC High airway
EGBIP UN857 AKNUB

SBCO – SBSC Low Airway
KORGU Z4 AKNUB

SBSC – SBAN High airway
UTNOP1A MUDKA UM409 FLAND DCT

SBSC – SBAN Low airway
UTNOP1A MUDKA Z52 FLAND

Positions available for ACT and frequency:

Ground:

SBCO 121.70 – Canoas
SBTA 121.70 – Taubate
SBES 121.90 – Aldeia
SBSC 121.80 – Santa Cruz
SBAN 121.90 – Anapolis

Tower:

SBCO 118.50 – Canoas
SBTA 119.90 – Taubate
SBSC 118.80 – Santa Cruz
SBES 118.30 – Sao Pedro da Aldeia
SBAN 118.30 – Anapolis

Approach/ departure:

SBWP 119.00 – Porto alegre
SBWJ 119.72 – Rio de Janeiro
SBXN 120.55 – Anapolis
SBES 119.45 – Aldeia
SBXP 129.50 – Sao Paulo

Center:

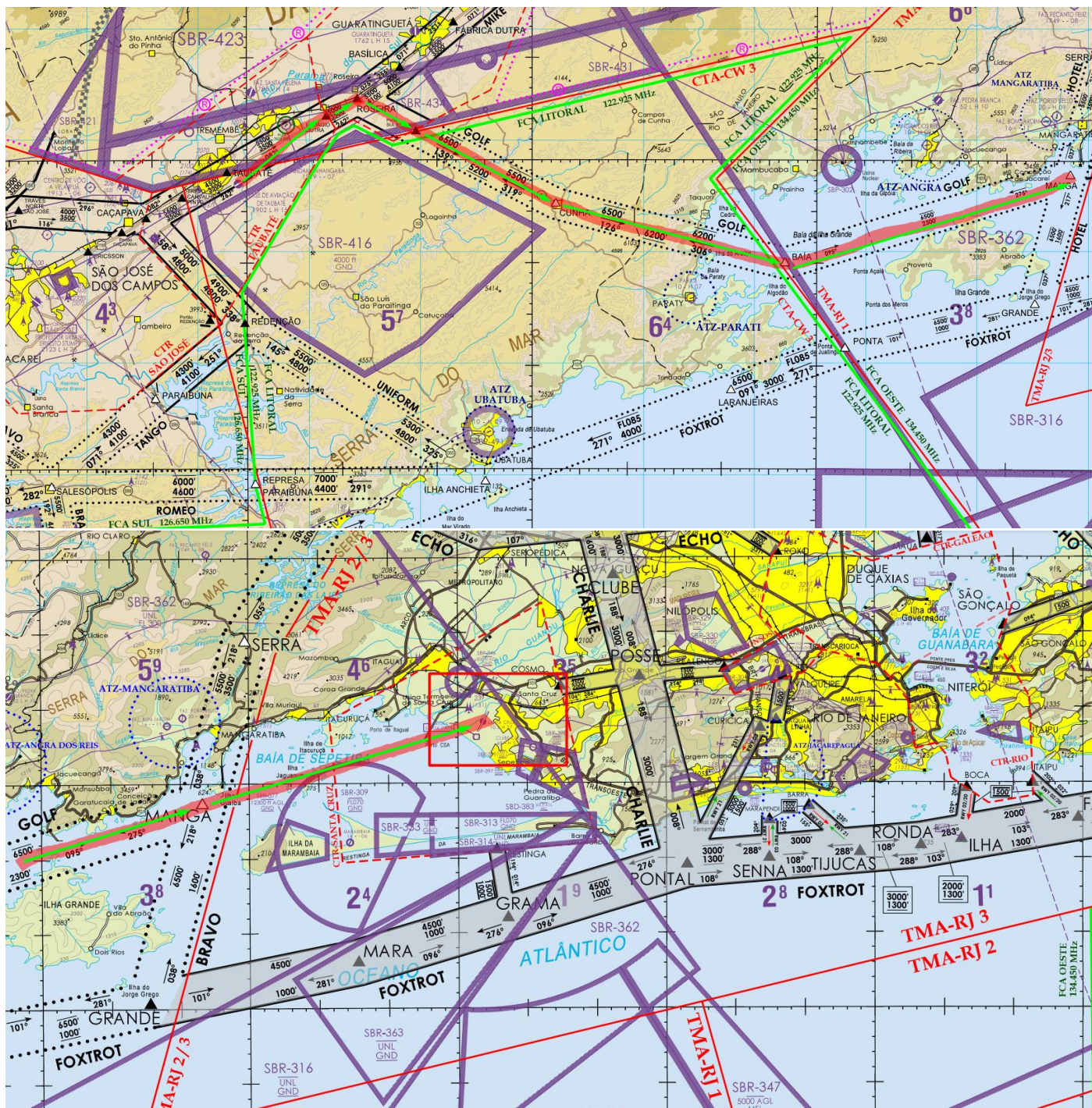
SBBS 135.90 / 135.15 – All sectors
SBCW 135.85 / 133.50 – Curitiba All sectors

Rotary Wings – Taubate Army airbase **SBTA** – Santa Cruz airbase **SBSC** – Sao Pedro da aldeia naval airbase **SBES**

Preferably for VFR flight, fly visual corridors REA or REH. IFR flights will also be accepted if the equipment is homologated.

SBTA – SBSC

Route 1 – REA: MIKE – GOLF



Waypoints REA (Especial VFR route):

PEDÁGIO DUTRA (225549S 452138W)

ROSEIRA (225407S 451824W)

SUL BASÍLICA (225716S 451214W)

CUNHA (230417S 445729W)

BAÍA (231003S 443321W)

MANGA (230127S 440324W)

Flight Plan:

Route Field:

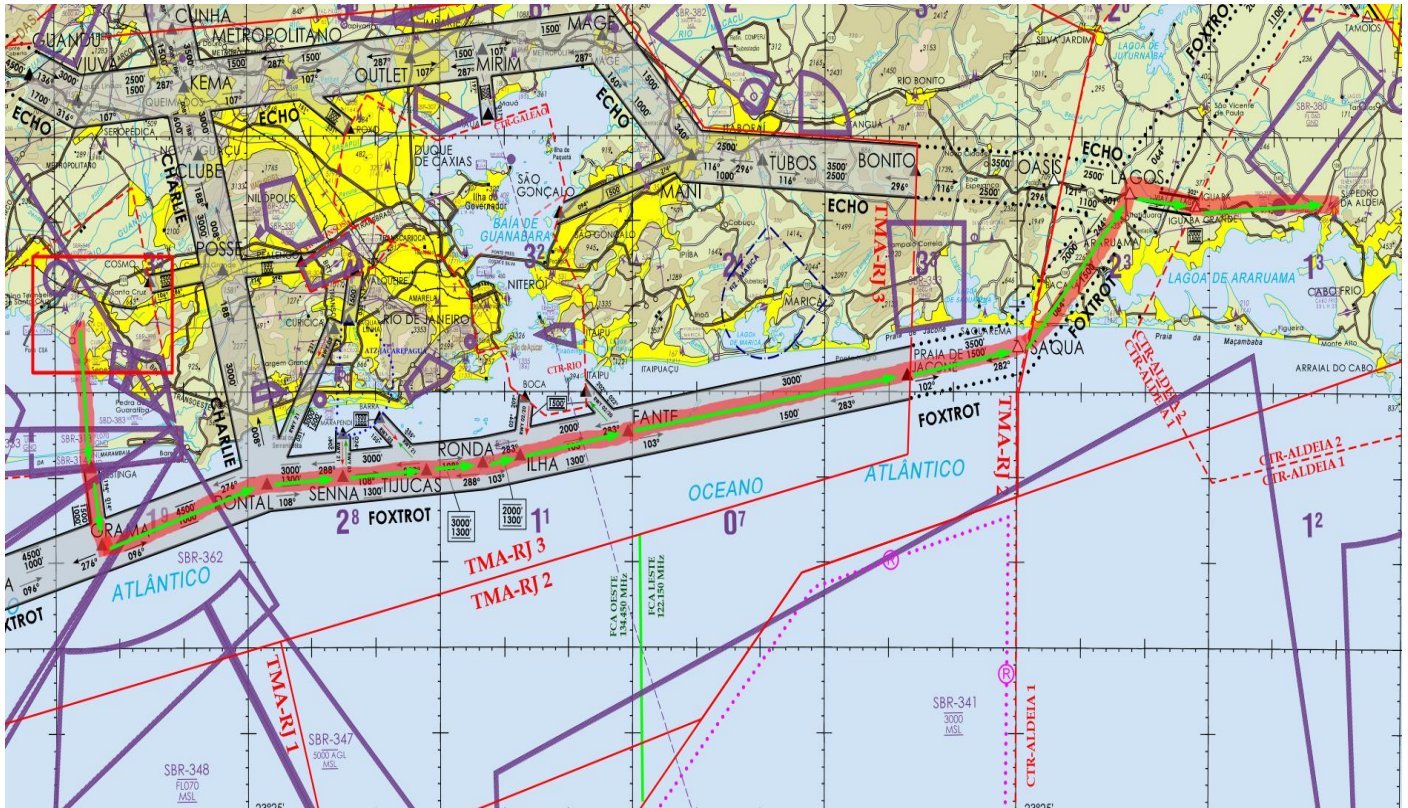
225407S451824W REA 225716S451214W 230127S440324W DCT

Field 18 remark:

DOF XXXXXX/RMK REA MIKE GOLF ALT MAX REA

SBSC – SBES

Route 1 – REA: FOXTROT



Waypoints REA (VFR especial Route):

RESTINGA (230902S 434124W)
 PONTAL (230530S 432830W)
 SENNA (230503S 432235W)
 TIJUCAS (230441S 431603W)
 RONDA (230414S 431139W)
 ILHA (230350S 430844W)
 FANTE (230226S 430020W)
 PRAIA DE JACONÉ (225906S 423831W)
 SAQUA (225727S 422956W)
 LAGOS (224827S 422115W)
 IGUABA (224909S 421609W)

Flight Plan:

Route Field:

DCT 230902S434124W 230530S432830W REA 224827S422115W 224909S421609W DCT

Field 18 remark:

DOF XXXXXX/RMK REA FOXTROT ALT MAX REA

REA Charts link:

https://aisweb.decea.mil.br/cartas/visuais/rea/CCV_REA_TMA_SP_VALE_DO_PARAIBA_20_MAIO.pdf

https://aisweb.decea.mil.br/cartas/visuais/rea/CCV_REA_TMA-RJ.pdf

REH charts link:

https://aisweb.decea.mil.br/cartas/visuais/reh/CCV_REH_TMA_SP2_e_proje%C3%A7%C3%A3o_20_MAIO.pdf

https://aisweb.decea.mil.br/cartas/visuais/reh/CCV_REH_TMA-RJ_3.pdf

https://aisweb.decea.mil.br/cartas/visuais/reh/CCV_REH_TMA-RJ_2_e_3.pdf

SBSC charts link:

<https://aisweb.decea.mil.br/api/download/zip.cfm?full=3B701E45-15D8-40BE-BF2896CA231EAEBD&use=0>

SBCO charts link:

<https://aisweb.decea.mil.br/api/download/zip.cfm?full=F9B068FC-58F9-4F1F-B7776B5FB8D1C349&use=0>

SBAN charts link:

<https://aisweb.decea.mil.br/api/download/zip.cfm?full=90D89A06-3847-48DF-81FE83FF931F5CD7&use=0>

SBES charts link:

<https://aisweb.decea.mil.br/api/download/zip.cfm?full=6E7D1E5C-2993-41C1-BC4FF8410A0B6162&use=0>

SBTA charts link:

<https://aisweb.decea.mil.br/api/download/zip.cfm?full=82D0809F-98C1-4874-B0576E70CF2AB2CC>