



**IVAO EAST ASIA REGION**  
**SPECIAL OPERATION DEPARTMENT**

**OPERATION DUSK WAKER**







## INTRODUCTION

East Asia Region proudly presents our first ever Special Operations Event! Join Hong Kong's SAR agency HKGFS and embark on an exciting rescue mission! We have designed our first event carefully to ensure it is fun and meaningful. Take command of your helicopters and execute your tasks in the pitch dark South China Sea efficiently and safely. Rescue the passengers from the sea, experience the satisfaction of SAR missions and the sun will rise again when dawn wakens.

## SCENARIO

HKGFS(Hong Kong Government Flying Service) was alerted by HKMRCC(Hong Kong Maritime Rescue Co-ordination Centre) that a Chinese cruise ship was abandoned about 70 miles East of Hong Kong after an uncontrollable engine fire, 50 passengers and crew members were reported missing but believed to be wearing lifejackets.

## MISSION TIMELINE

TIME	ITEMS
1145	Briefing On Discord Channel
1200	Start Of Operations
1500	End Of Operations
1510	Start Of Debriefing On Discord Channel
1520	End Of Debriefing On Discord Channel

## COMMON DATA

NAVAIDS		COMMS		
CH VOR-DME	Freq 070X - 112.3 MHz	VHHH_TWR "Hong Kong Tower"	118.200 MHz	
TD VOR-DME	Freq 108X - 116.1 MHz	VHHH_Z_TWR "Hong Kong Zone"	120.600 MHz	
		MRCC "Air Command"	Discord	
		VHHH_F_TWR "Hong Kong Information"	122.400 MHz	
		VHHK_TM_CTR "Hong Kong Radar"	126.300 MHz	
COORDINATES		AIRSPACE		
SAR Area	221331N 1150150E	ATZ	SFC - 2000ft AMSL	Class C
Eastern Hospital (HK24)	222695686N 1142361496E	Zone	SFC - 2000ft AMSL	Class C
Wan Chai Helipad (HK07)	222850454N 1141742754E	50NM from "CH" DME	SFC - 8000ft AMSL	Class G
GFS Base (VHHH)	222963701N 1139079133E	Class G also required direct 2-ways comm with ATC		
CALLSIGN				
VGFS Pilot	HKGxx / CLxx / RESQxx / HELIxx			
Foreign Pilot	Aircraft Registration			



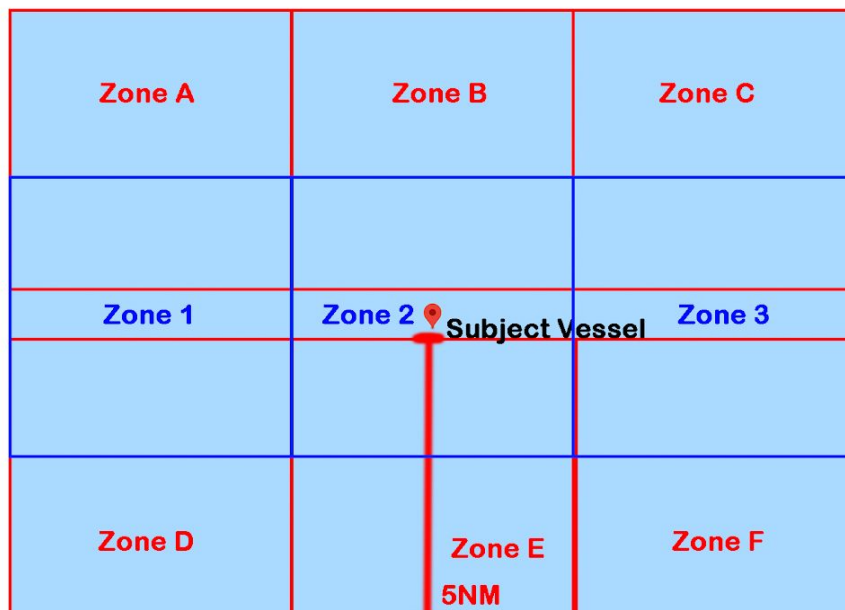
# MISSION

## 1. Fixed-wing Aircraft Pilot

You will be the first one arrive the search area. Depart IFR/VFR from base, upon establishing the area, start your orbit search pattern at 1000ft and report to Air Command the exact coordinates of the cruise ship, confirm the number of missing passengers and crew members from HKMRCC and locate them.

ROUTE	
IFR (RWY 07 in use)	PORPA TD TD095040 LINES "ILS07R"
IFR (RWY 25 in use)	PRAWN RUMSY TD095040 TD "ILS25R"
VFR (RWY 07 in use)	TPZ ELC HKS WAG TD095040 WAG SOK FAN WLC
VFR (RWY 25 in use)	WLC FAN WAG TD095040 WAG ELC MWC TPZ
COMMS EXAMPLES WITH AIR COMMAND	
ON SCENE and COMMENCING SCARCH	
PIC	AIR COMMAND, (callsign), ON SCENE, WE HAVE (xx) MINUTES ON SCENE TIME
RCC	(callsign), copy xx MINUTES ON SCENE TIME
TARGET LOCATED	
PIC	AIR COMMAND, (callsign), TARGET LOCATED
RCC	(callsign), ROGER
AFTER LOCATING THE SURVIVORS	
PIC	AIR COMMAND, (callsign), THERE ARE AROUND (xx) PEOPLE IN THE WATER
RCC	(callsign), COPY (xx) PROPLE IN THE WATER
<b>Keep Orbiting the search area and communicate with other rescue units untill all the survivors are rescued</b>	
<b>Communication is not required with Air Command except "Task Completed" &amp; "Low Fuel Return" or other request</b>	
AFTER ALL VICTIMS ARE RESCUED	
PIC	AIR COMMAND, (callsign), OFF THE SCENE, RTB, ETA (xxxx)
RCC	(callsign), ROGER
COMMS EXAMPLES WITH ADJCENT RESCUE UNITS	
PIC-A	(callsign) FROM (callsign), THERE ARE (x) SURVIVORS ON YOUR (xx) OCLOCK
PIC-F	(callsign), TARGET LOCATED, THANK YOU

## Search Quarters



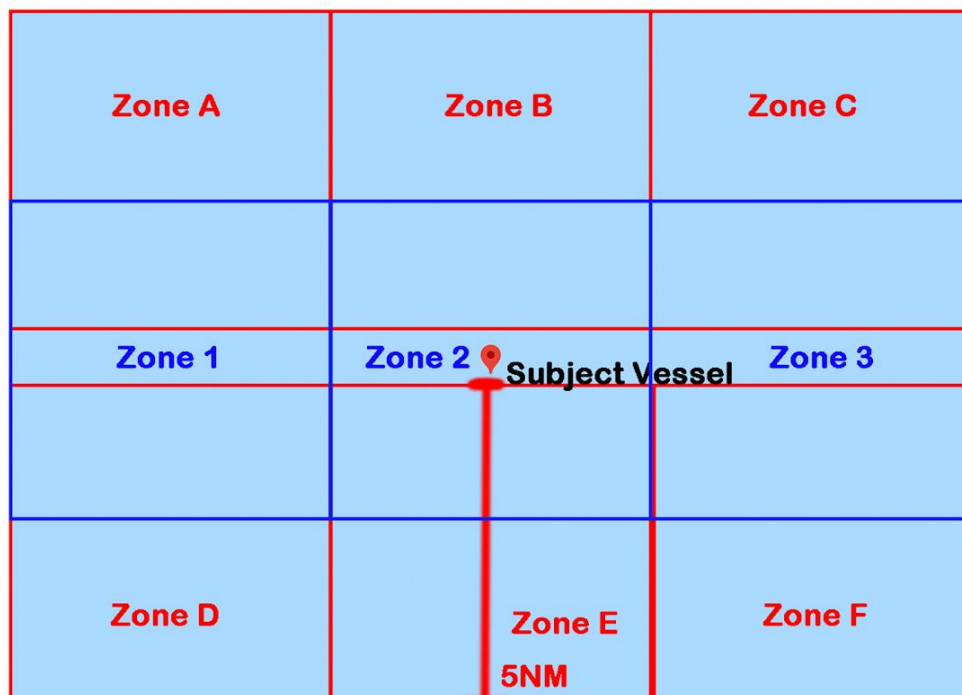


## 2. Helicopter Pilot

After receiving the report from fixed-wing pilot, you are deployed to the scene are rescue victims back to land. Fixed-wing pilot will assist you upon reaching the scene.

ROUTE	
VFR	SIL HKS WAG TD095040
VFR (Low visibility)	TPZ ELC HKS WAG TD095040
DESTINATION	
Eastern Hospital (HK24)	SERIOUS INJURIES (LIFE THREATENING)
Wan Chai Helipad (HK07)	MINOR INJURY (REQUIRE AMBULANCE TRANSPORT)
GFS Base (VHHH)	NO INJURY
COMMS EXAMPLES WITH AIR COMMAND	
ON SCENE and COMMENCING SEARCH	
PIC	AIR COMMAND, (callsign), ON SCENE, WE HAVE (xx) MINUTES ON SCENE TIME
RCC	(callsign), copy xx MINUTES ON SCENE TIME
AFTER PICKING UP VICTIMS ONBOARD	
PIC	AIR COMMAND, (callsign), PICKED UP (x) SURVIVORS, NOW TRACKING TO (destination), ETA (xxxx)z
RCC	(callsign), COPY PICKED UP (x)
AFTER DROPPING OFF THE VICTIMS	
PIC	AIR COMMAND, (callsign), TASK COMPLETED, RTB IN (xx) MINUTES, ANY INSTRUCTIONS
RCC	(callsign), RTB CLOSE DOWN
PIC	RTB CLOSE DOWN, (callsign)
COMMS EXAMPLES WITH ADJACENT RESCUE UNITS	
PIC-A	(callsign) FROM (callsign), THERE ARE (x) SURVIVORS ON YOUR (xx) OCLOCK
PIC-F	(callsign), TARGET LOCATED, THANK YOU

### Search Quarters

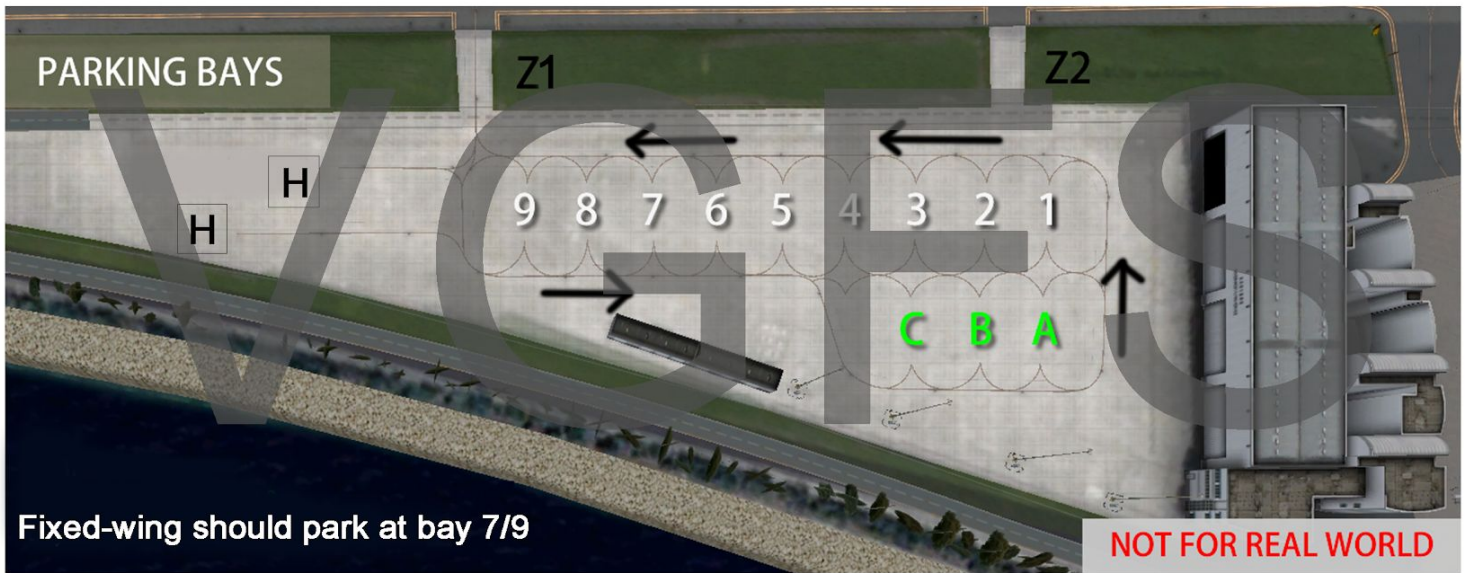




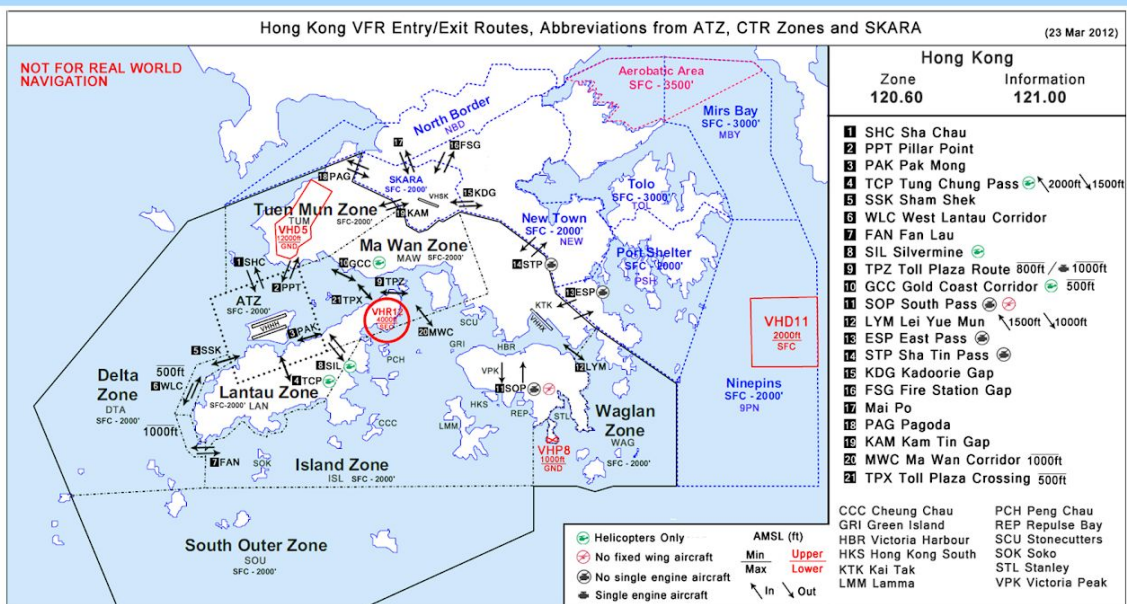
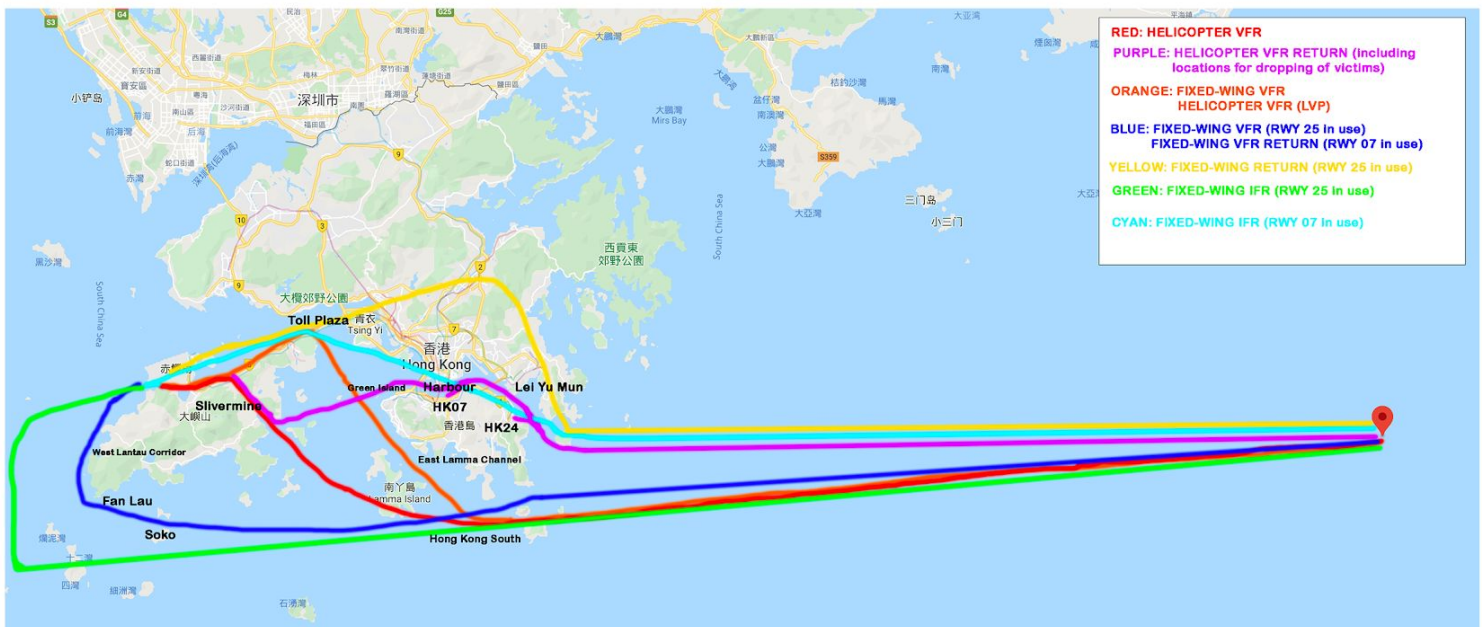
# Operation Dusk Waker Special Operations Event



## PARKING



## MAP





## 1. GFS Base (VHHH)

There are 2 departure procedures for helicopters, you may choose to lift off from helipad in the base or lift off from Taxiway K





## 2. Wan Chai Helipad

This heliport is under Zone Control, all departing and arrival helicopter must obtain clearance from ATC before entering or departing the heliport.

Two Helipads can be used in Wan Chai Heliport.

(1) Helipad "H" is for both take-off and landing, Helicopter should depart to direction in between 280degrees - 090degrees

. Pick up passenger is allowed.

(2) Helipad "T" is for take-off only. Helicopter should depart to northeast direction in between 040degrees – 090degrees

. Pick up passenger is allowed.

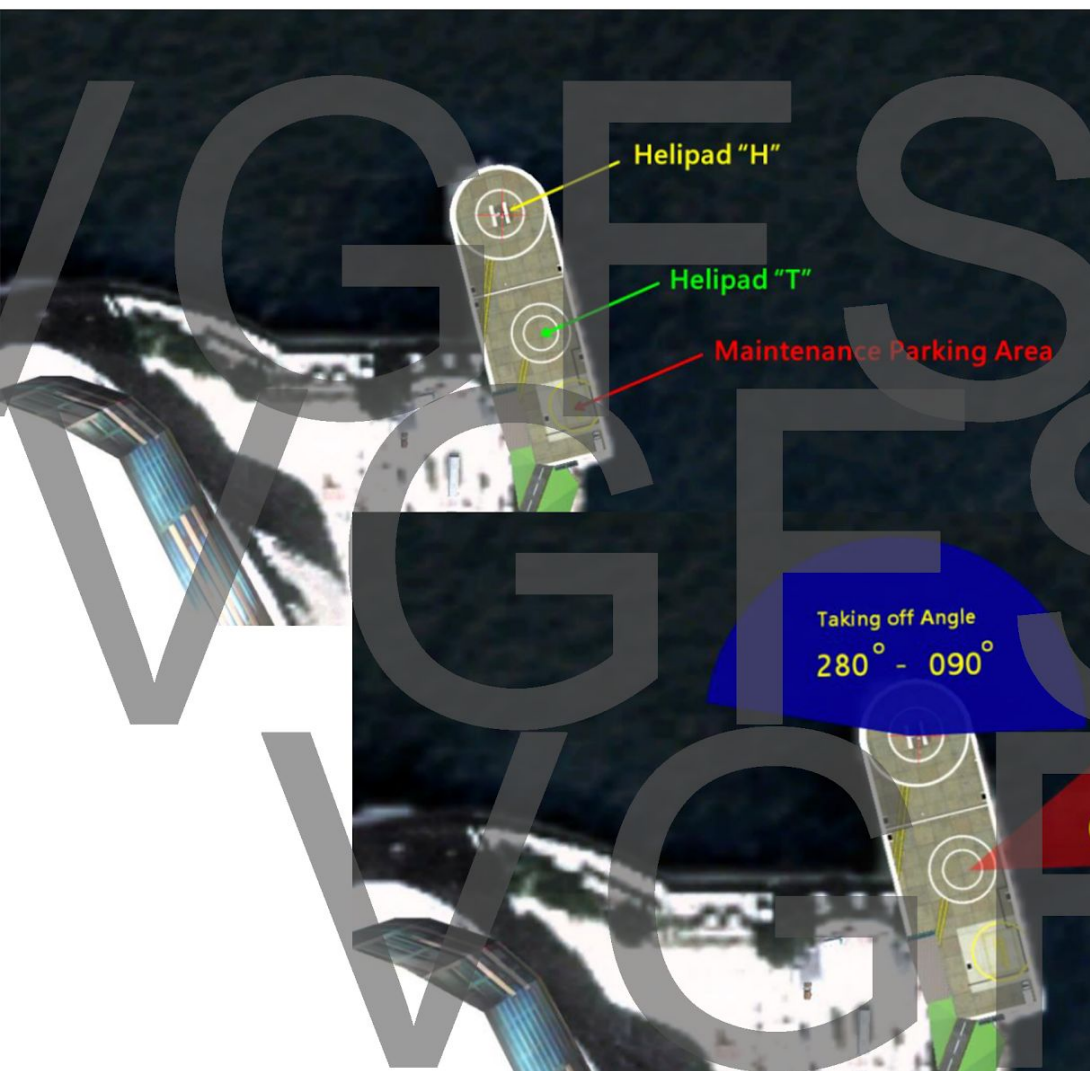
(3) Maintenance Parking Area is for traffic which has technical problem. No Helicopter is allowed to shut down engine at the Wan Chai Heliport unless there is flight safety problem (i.e. engine failure) or bad weather.

### Note:

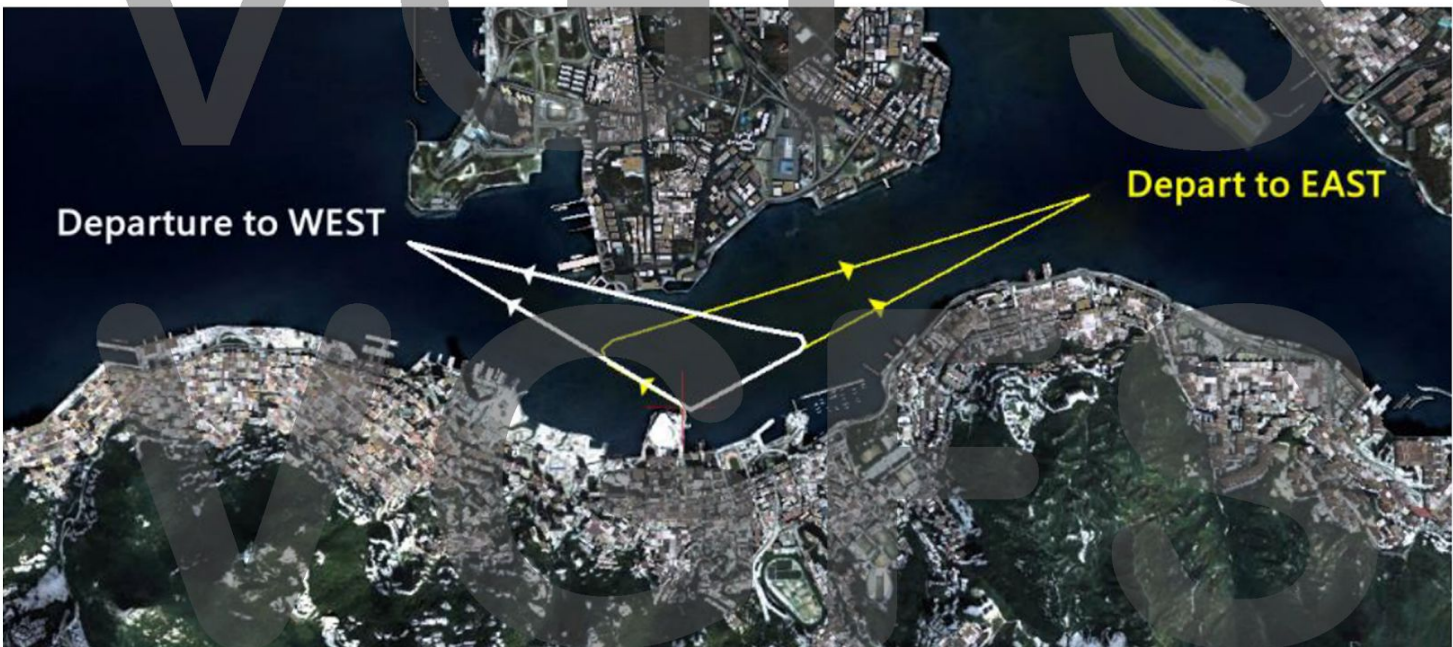
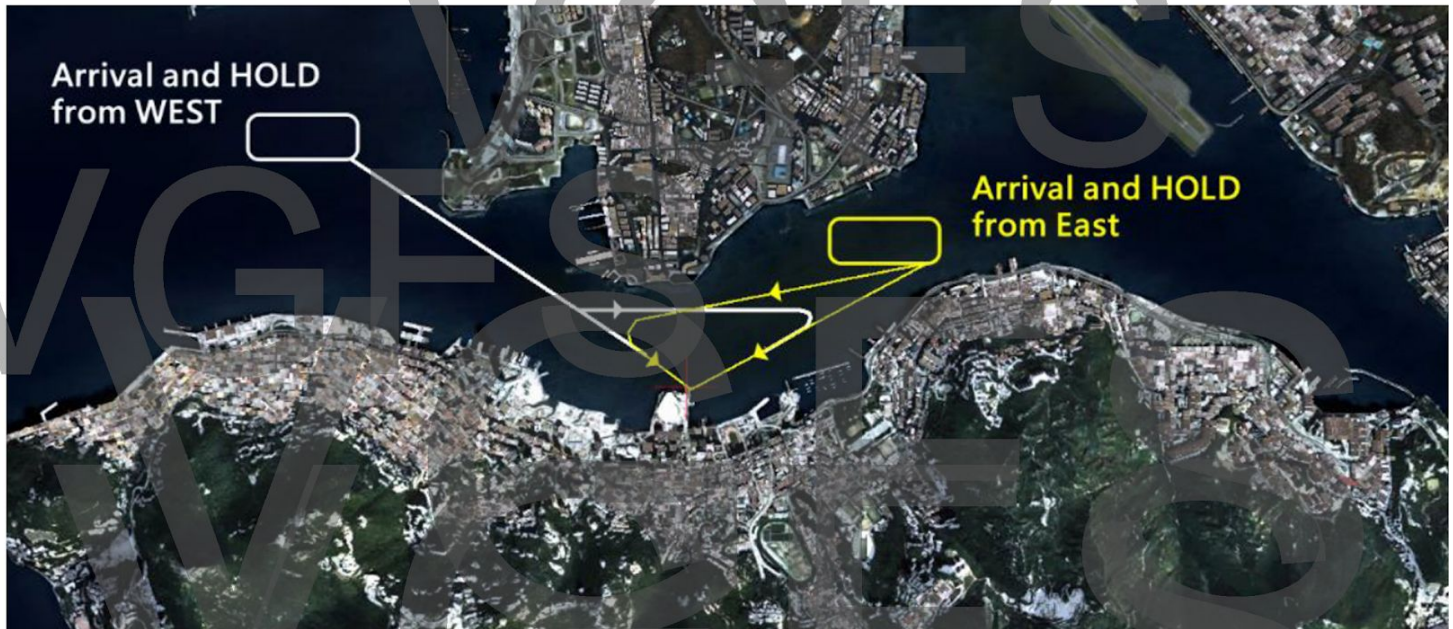
(1) If helicopter requires ground movement (i.e. taxi or hover taxi from helipad H to helipad T), pilot must obtain taxi clearance from ATC (if any)

(2) The operation of Wan Chai Heliport shall be suspended when required by VGFS.

(3) The Wan Chai Heliport is located very close to waterfront promenade and HKCEC, all pilot should ensure the approach heading is suitable and plan for missed approach if engine failure.









### 3. Eastern Hospital

Please be noted that Eastern Hospital (HK24) will not be shown as airport in your flight simulator, pilot may have to look for it base on ground landmarks.





## SCENERY & FLIGHTPLAN FILE FOR FSX/P3D

Download: <https://bit.ly/IVAOXESOE2-S>

## SCENERY FOR X-PLANE

Download: <https://bit.ly/IVAOXESOE3-S>

## NOTAM

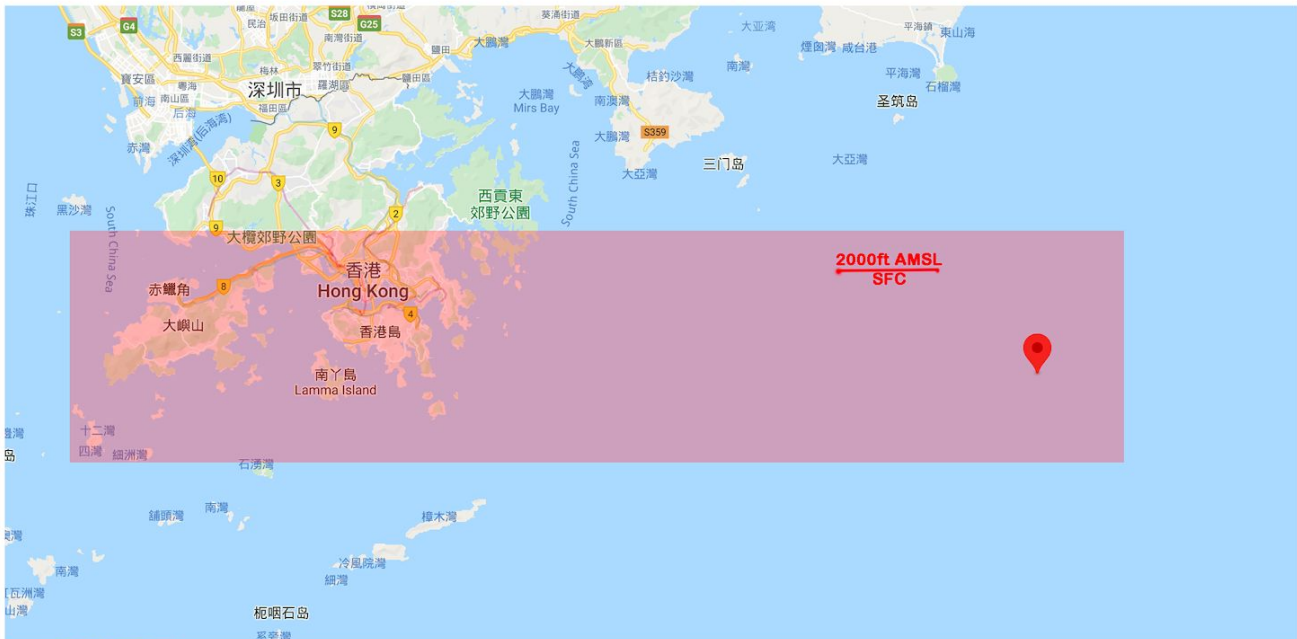
TEMPORARY RESTRICTED AREA ESTABLISHED WITHIN AREA BOUNDED BY STRAIGHT LINES JOINING SUCCESSIVELY: 223811N1138027E-223811N1150356E-220833N1150356E-220883N1138027E

LOWER LIMIT: SFC

UPPER LIMIT: 2000ft AMSL

ACTIVATION: 16MAY20 1200 – 1530

CONDITIONS OF USE: RESERVED AND DESIGNATED FOR EXCLUSIVE USE BY PARTICIPANTS OF OPERATION DUSK WAKER EVENT ONLY, NO OTHER AIR TRAFFIC SHALL ENTER RESTRICTED AREA EXCEPTED FOR IFR TRAFFIC IN AND OUT OF VHHH



## FPL FILING

Helicopter / Fixed-wing VFR :

(FPL-xxxx-VM

-01xxxx/M-xxxxxx/x

-VHHHxxxx

-N0xxxVFR XXXXXXXX ← Route refers to the mission page

-VHHHxxxx VHHX

-RMK/OPERATION DUSK WAKER)

Fixed-wing IFR :

(FPL-xxxx-YM

-01xxxx/M-xxxxxx/x

-VHHHxxxx

-N0xxxA050 XXXXXX ← Route refers to the mission page

-VHHHxxxx VHHX

-RMK/OPERATION DUSK WAKER)

## CONTACT

For any enquiries, please contact XE-SOC “xe-soc@ivao.aero”



