

EXTREMACH LOOP

ALA 23 VIRTUAL[®]



JUNE 11, 2022
1430Z – 1730Z

INTRODUCTION

Low-altitude flight in which we will take the route of the Castles flown by Wing 23, the famous route of the Extremach Loop (www.extremachloop.com). There will be a key point that is the Castillo de Fería, a town in Extremadura, a point where we will adjust to the terrain as much as possible once the traffic control authorizes us to make the pass.

To be able to carry out this mission, CAO knowledge, low-level flight, holding and break landings are required.

PLANE TYPES

All types of aircraft or helicopters are accepted, although adjusting to the real event of the Extremach Loop we suggest the use of the following types of aircraft:

- F5
- F18
- Eurofighter
- PC21

ATC CONTROL

LECS_MIL_CTR

CAO control. It will be the control position that will authorize passes and organize waiting traffic.

Limits: FL660/AMSL

Frequency: 125.775 MHz

LEBZ_TWR

Ground traffic control and final approach to Badajoz.

Frequency: 122.100 MHz

LEBZ_APP

Traffic control in approach and early departure from Badajoz

Frequency: 120.550 MHz

MISIÓN

Our mission will be to carry out the castle route, the original route of the 23 Wing Hunting and Attack School. On this occasion and as has been done a few weeks ago, the spotters will be waiting for us at the Fair Castle to take pictures of our flight at low altitude.

Initially we will take off from the Talavera Air Base, home of Wing 23. After taking off we will initially go to visual point E (Montijo), and from there we will go to the first point of the route of the castles, heading approximately 132º leaving the city of Mérida. and later the Alange reservoir on our left. We will maintain 5,000 ft at all times except as required by ATC.

Before arriving at the Castillo de Fería, we must break the formation that we are carrying in case we are flying in formation. The pass at low level will be carried out individually.

At waypoints number 7 and 8 we are expected to hold (above 5000 ft) in case the controller requires it, they will also be the points where we will break formations.

Once the controller authorizes us to make the low pass, we will go from point 8 (Medina de las Torres) to point 9 (Feria) flying at 500 ft above the ground.

Once we pass through the Fair, we can continue with the route of the Castles or ask the controller for a second pass through the Fair, for which we must inform him well in advance so that we can deviate to the right when we reach the Fair and rejoin one of the waiting points.

Back to LEBZ

After completing the route of the castles we can regroup with our flight formation if we wish, being the formation leader who must communicate intentions to the controller so that he can designate us a point to redo the formation.

Depending on the winds in LEBZ, we will enter the starting point of the active runway through the visual points (W) La Jail or the point (S) La Albuera.

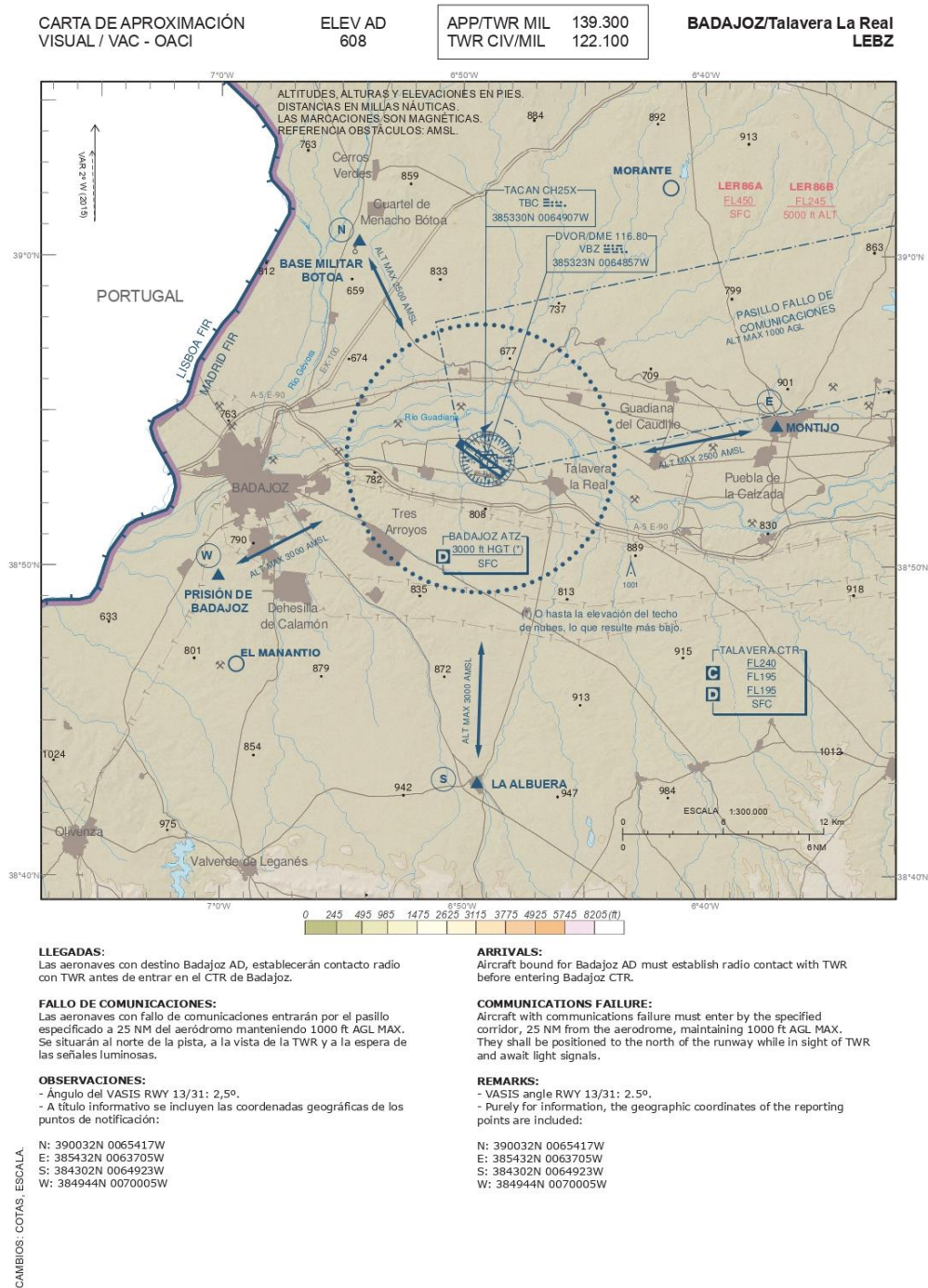
Unless we want to proceed in a different way, both the formations and the pilots flying individually must make a break before the final touchdown.

COMUNICATIONS

Initial communications will take place on the assigned IVAO Discord server channel (<https://sod.iviao.aero/discord>).

A short briefing will be held before the departure of the aircraft to order the aircraft upon departure as well as the holding points.

CHARTS



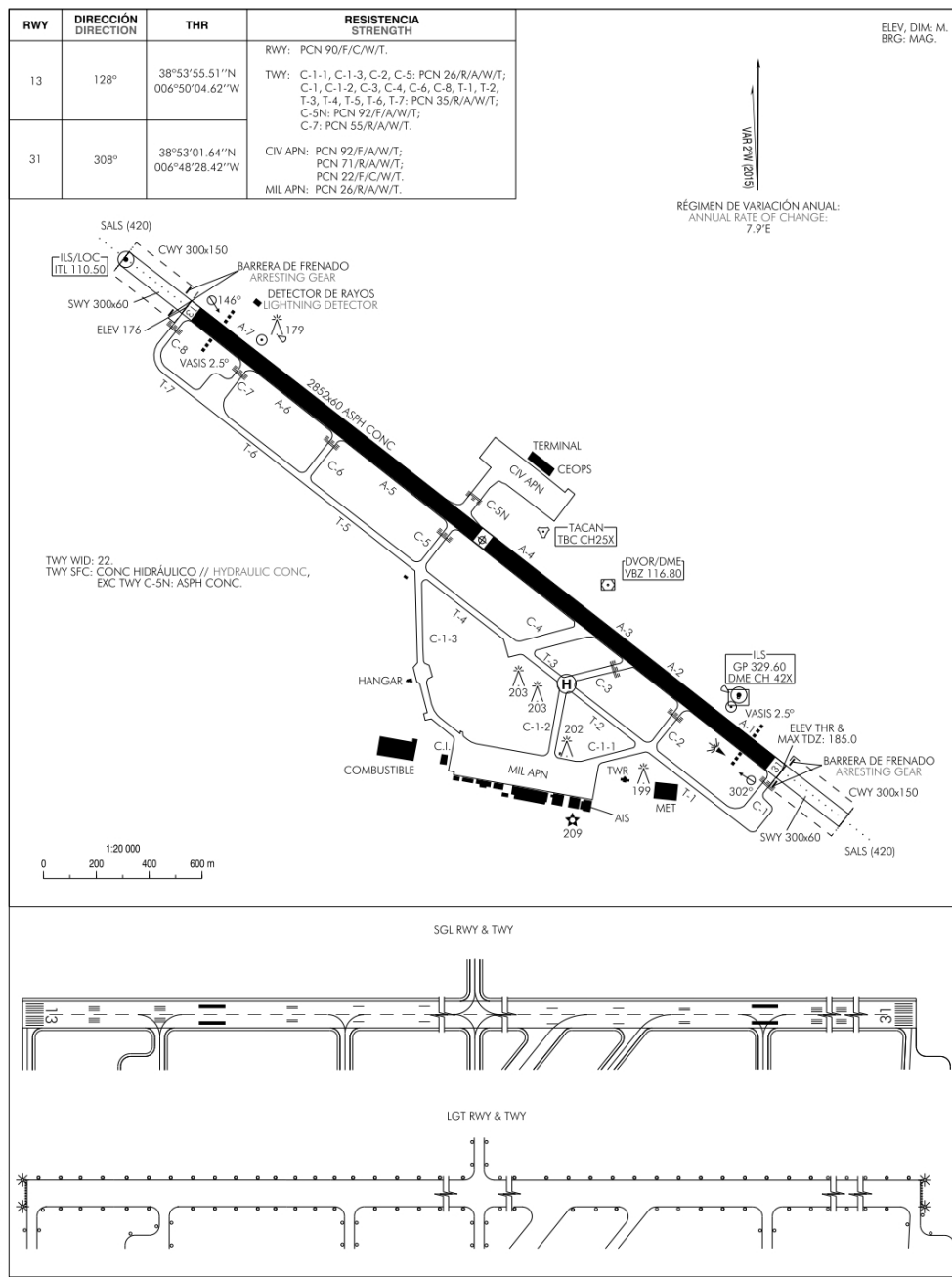
02-FEB-17 (AMDT 285/17)

AIP-ESPAÑA

AD 2-LEBZ VAC

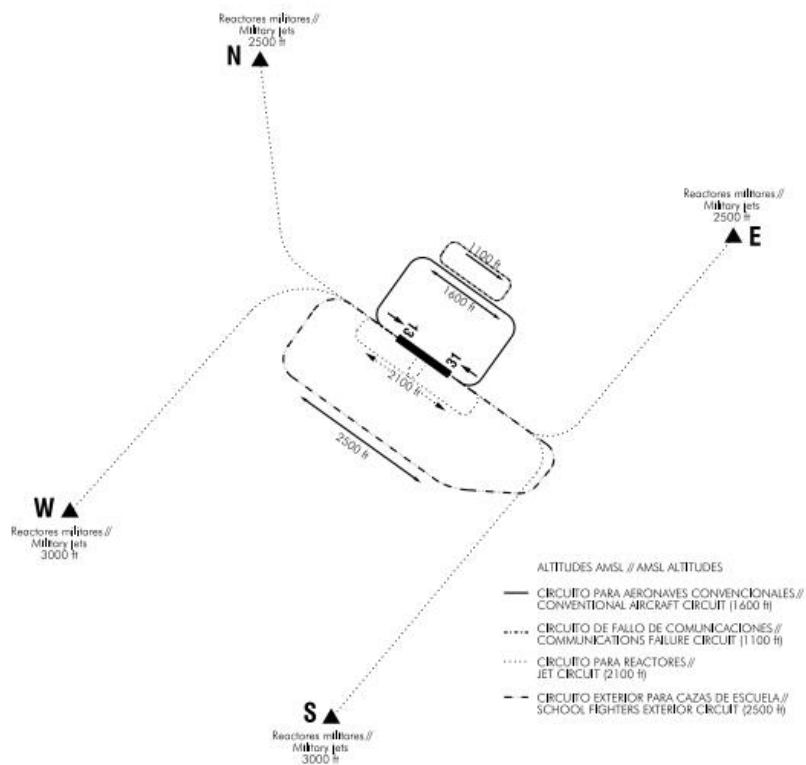
PLANO DE AERÓDROMO-OACI 38°53'29"N
006°49'17"W ELEV 185TWR CIV 122.100
GMC 130.150

BADAJOZ/Talavera La Real



AIS-ESPAÑA

AMDT 339/21

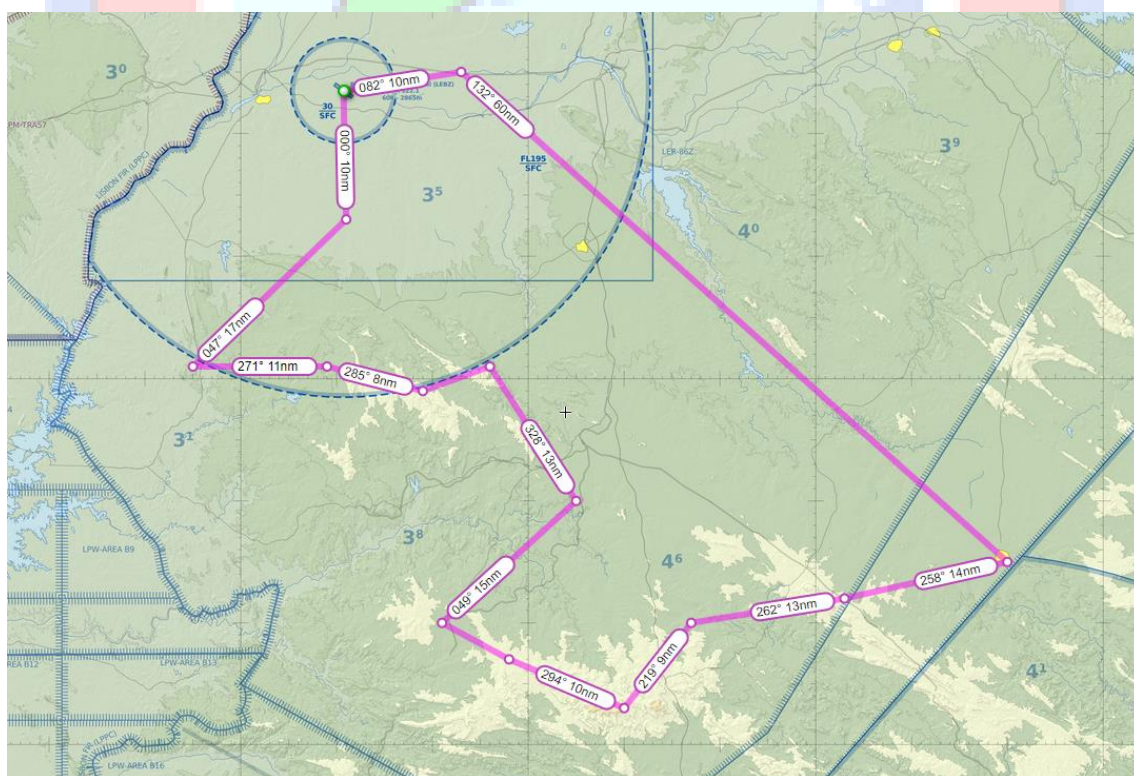
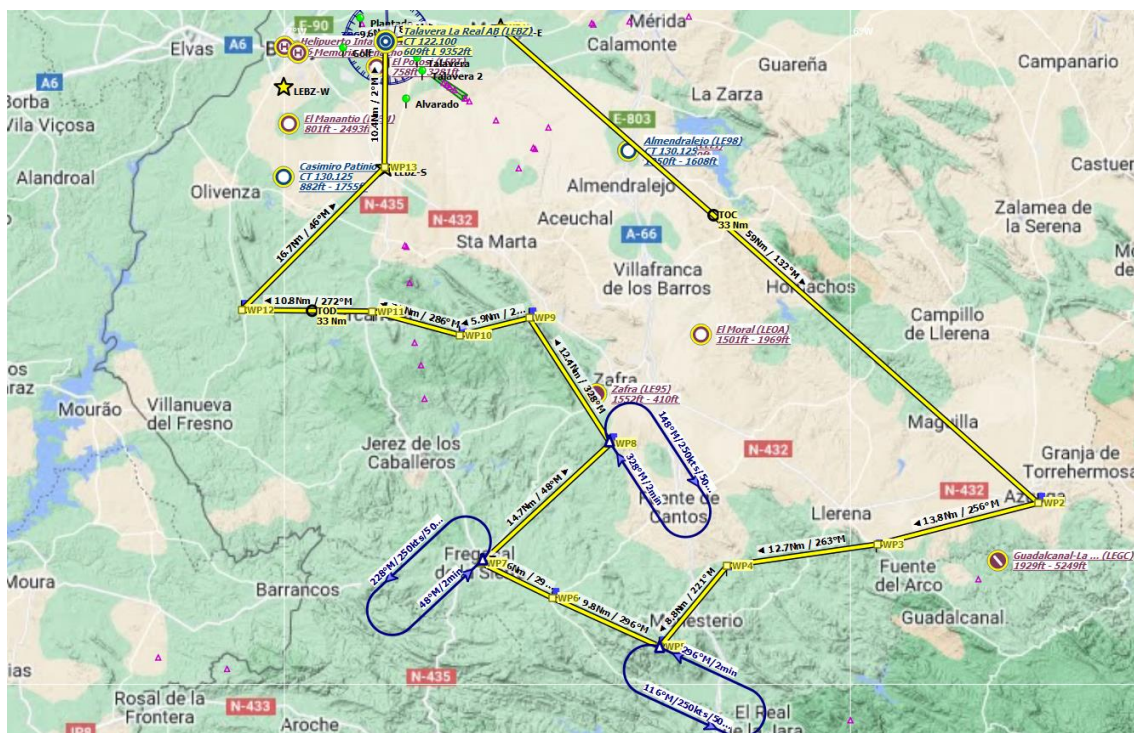


MAPS AND ROUTE

RUNWAY active 31

Rute: LEBZ 3855N00637W 3815N00540W 3812N00557W 3810N00613W 3803N00620W 3807N00632W 3810N00639W 3820N00625W 3831N00634W 3829N00641W 3831N00651W 3831N00705W 3843N00649W LEBZ

Waypoint	City	Coordinates
1	Montijo. Visual Point E	3855N00637W
2	Azuaga	3815N00540W
3	Casas de la Reina	3812N00557W
4	Montemolín	3810N00613W
5	Tentudia	3803N00620W
6	Segura de León	3807N00632W
7	Fregenal de la Sierra	3810N00639W
8	Medina de las Torres	3820N00625W
9	Feria	3831N00634W
10	Salvatierra de los Barros	3829N00641W
11	Barcarrota	3831N00651W
12	Alconchel	3831N00705W
13	La Albuera Visual Point S	3843N00649W

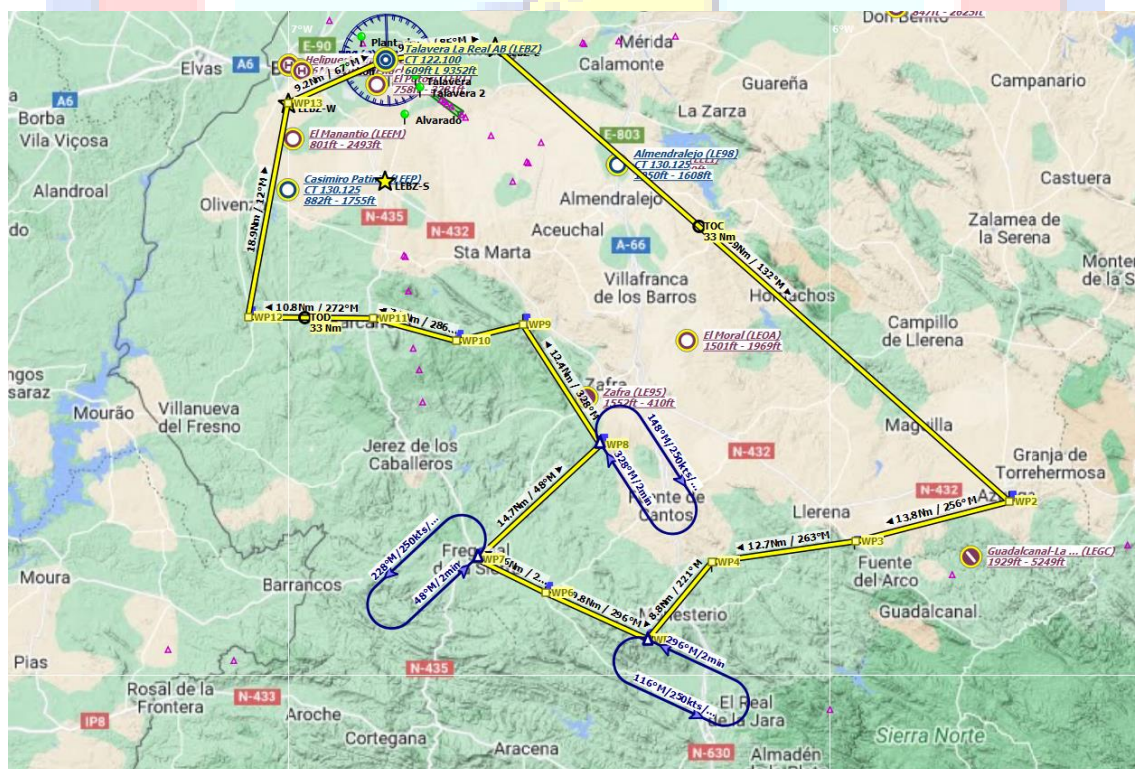


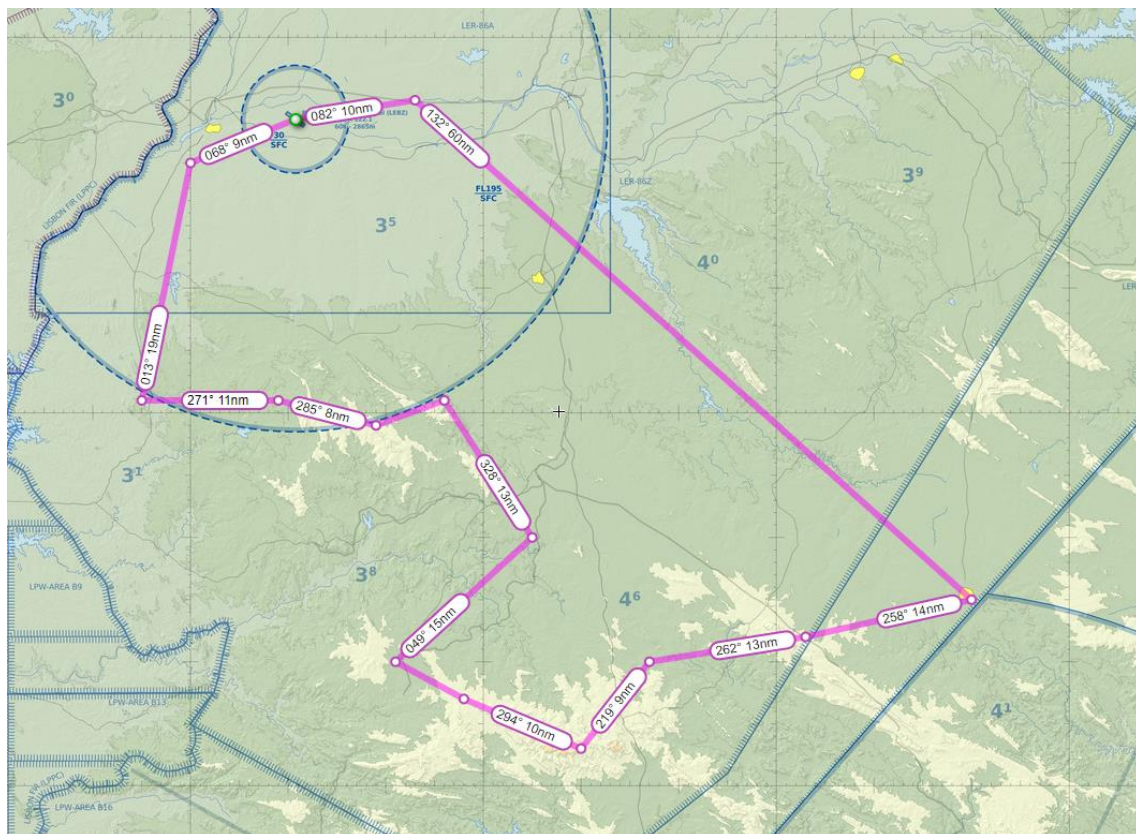
Runway active 13

Route: LEBZ 3855N00637W 3815N00540W 3812N00557W 3810N00613W 3803N00620W 3807N00632W 3810N00639W 3820N00625W 3831N00634W 3829N00641W 3831N00651W 3831N00705W 3850N00700W LEBZ

Waypoint	City	Coordinates
1	Montijo. Visual Point E	3855N00637W
2	Azuaga	3815N00540W

3	Casas de la Reina	3812N00557W
4	Montemolín	3810N00613W
5	Tentudia	3803N00620W
6	Segura de León	3807N00632W
7	Fregenal de la Sierra	3810N00639W
8	Medina de las Torres	3820N00625W
9	Feria	3831N00634W
10	Salvatierra de los Barros	3829N00641W
11	Barcarrota	3831N00651W
12	Alconchel	3831N00705W
13	Cárcel de Badajoz. Visual Point W	3850N00700W





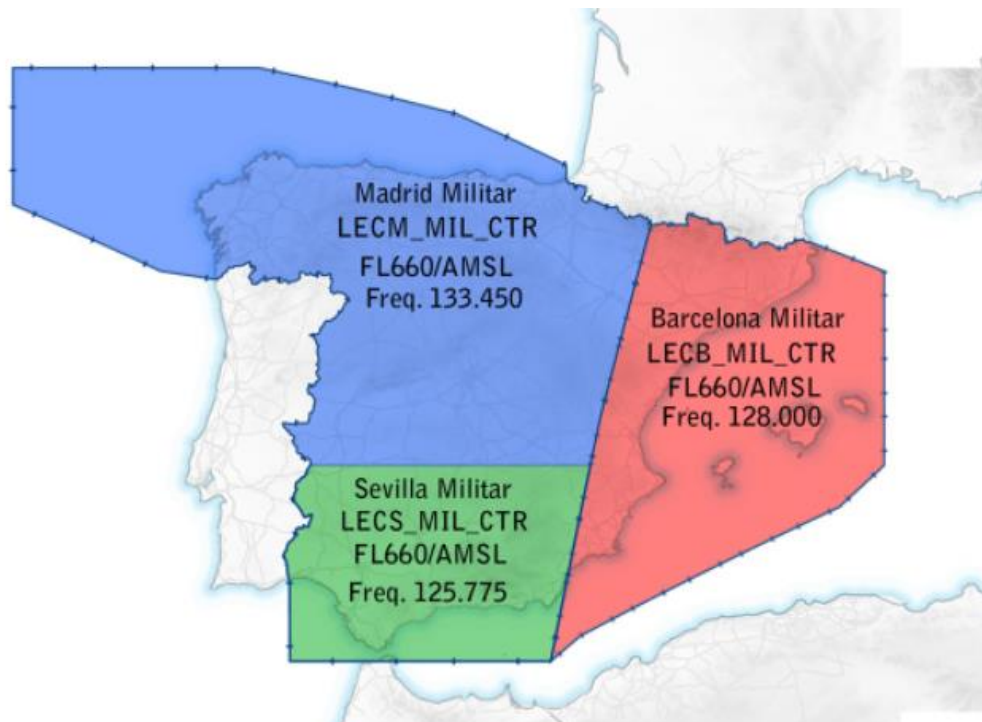
AERONAUTICAL INFORMATION

LECS_MIL_CTR

CAO control

Frequency: 125.775 MHz

Limits: FL660/AMSL



LEBZ

Air Base of Talavera la Real (LEBZ)

Location: Badajoz, Spain

Elevation: 185 m / 608 ft.

Runway: 13 & 31

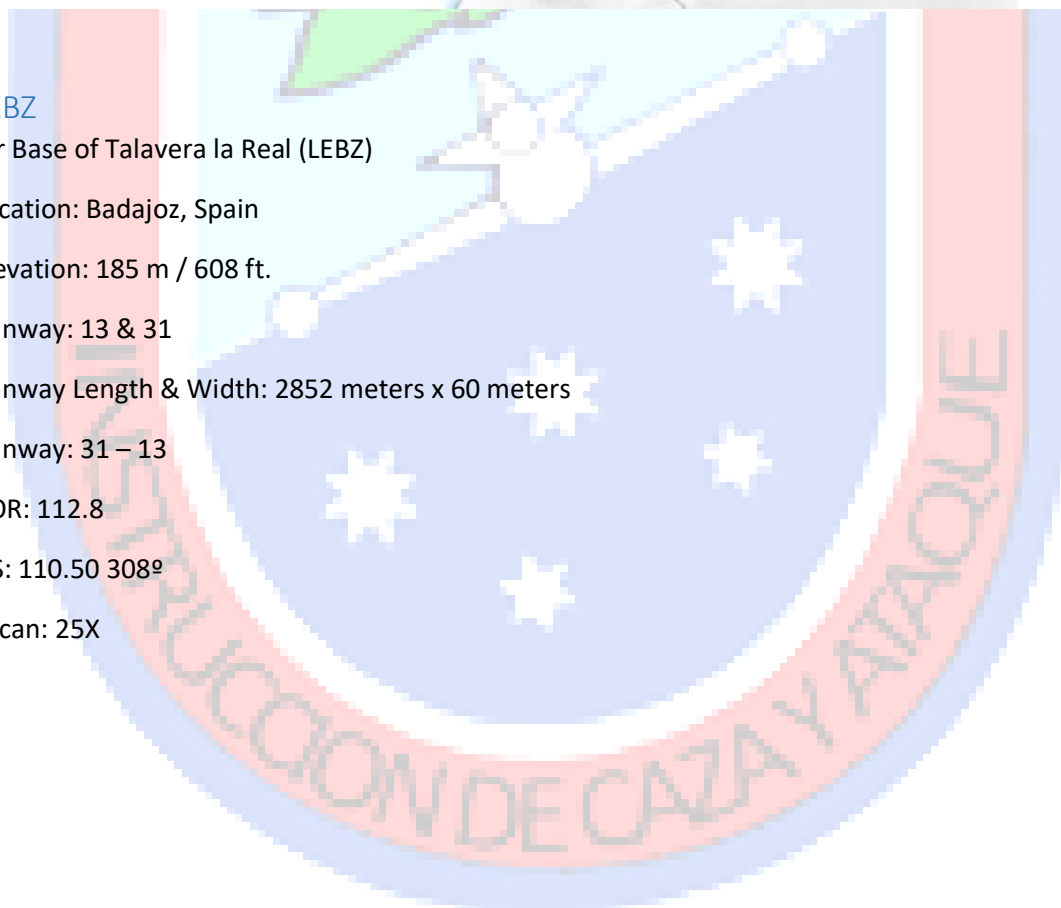
Runway Length & Width: 2852 meters x 60 meters

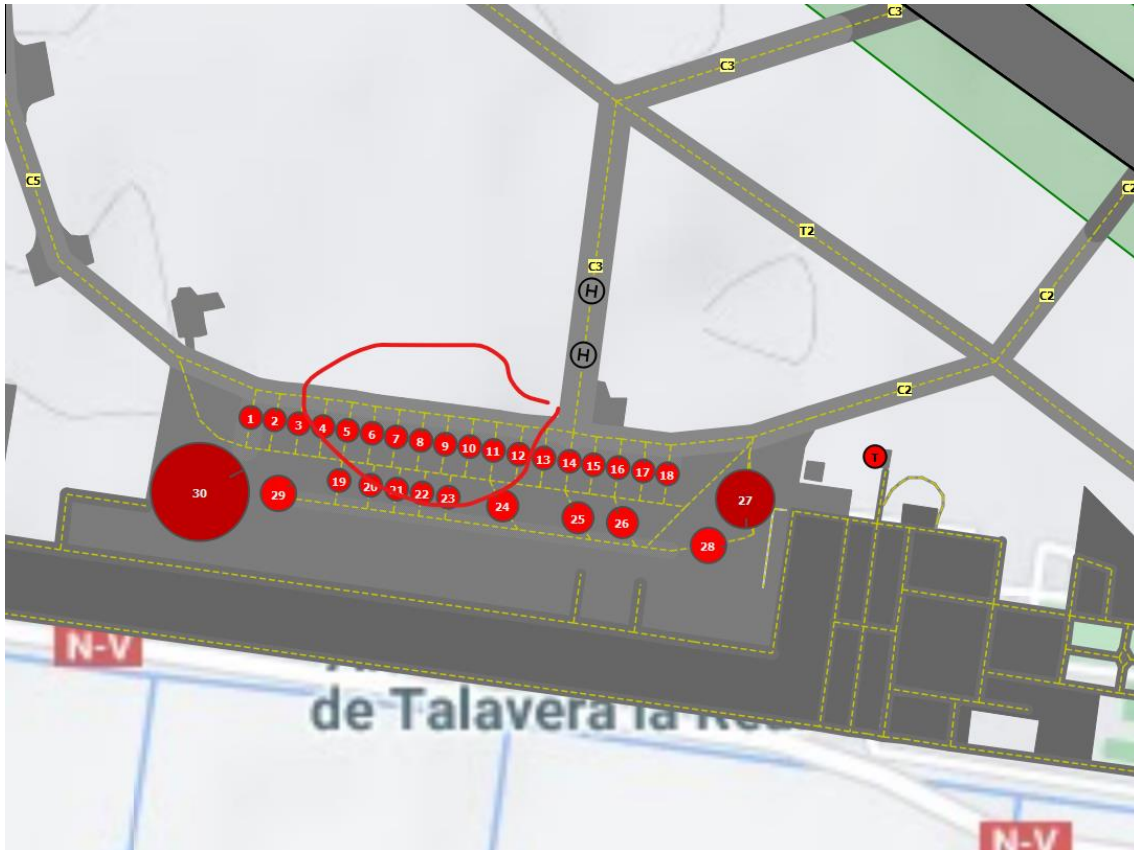
Runway: 31 – 13

VOR: 112.8

ILS: 110.50 308°

Tacan: 25X





Imágenes 1 – Parking area

RECOMMENDED SOFTWARE

FreemeshX - <http://ninetwopro.com/freemeshx/>

Airhispania SC/SCX/SCXP - www.airhispania.com

Photoreal Spain -

<http://www.airhispania.com/phpBB3/viewtopic.php?f=17&t=2506&sid=a3387a79741ccde8f1a99442e33ceda3>

Discord - <https://discordapp.com/>

JoinFS - <https://joinfs.net/> Server: Ala 23 Virtual