



DIFAS 23 AIR PARADE MOTRIL

MAY 28TH 2023, 1600Z – 1800Z

Departamento de Operaciones Especiales

1. INTRODUCTION.

The **“DIFAS 23 Air parade”** is a one-day exercise, in which we will make an air parade over Motril, departing and arriving to Málaga Air Base (LEMG) and Armilla Air Base (LEGA).

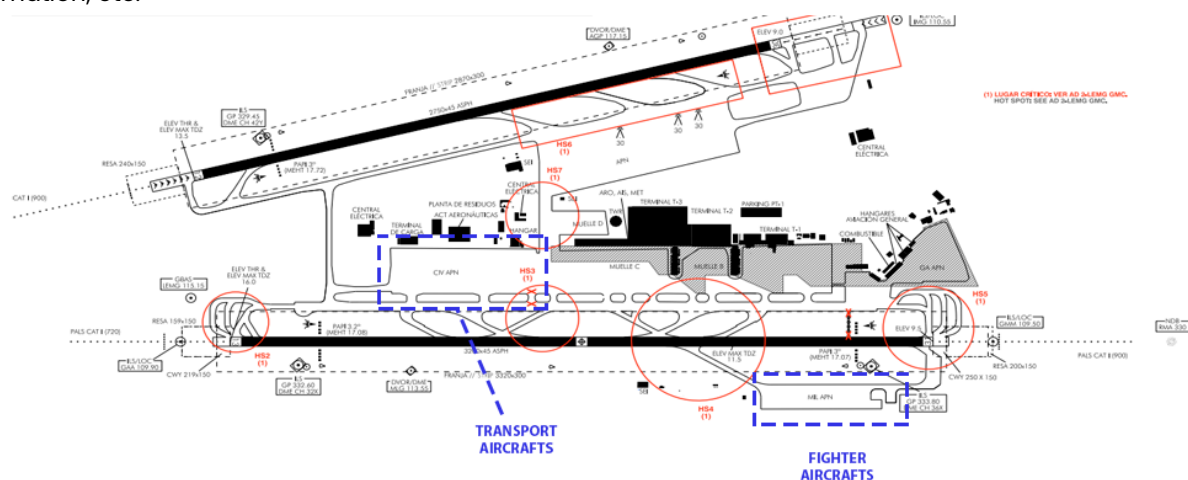
IVAO Spanish Division, invite VSOs and freelances to take part this event, it will take place in Motril, Spain, departing from Málaga AB, 28th May 2023, 16:00Z.

All participants must register to be assigned a calculated take-off time (CTOT), in addition, all those divisions that have Letters of Agreement (LOA) with the Spanish Division will have priority to register.

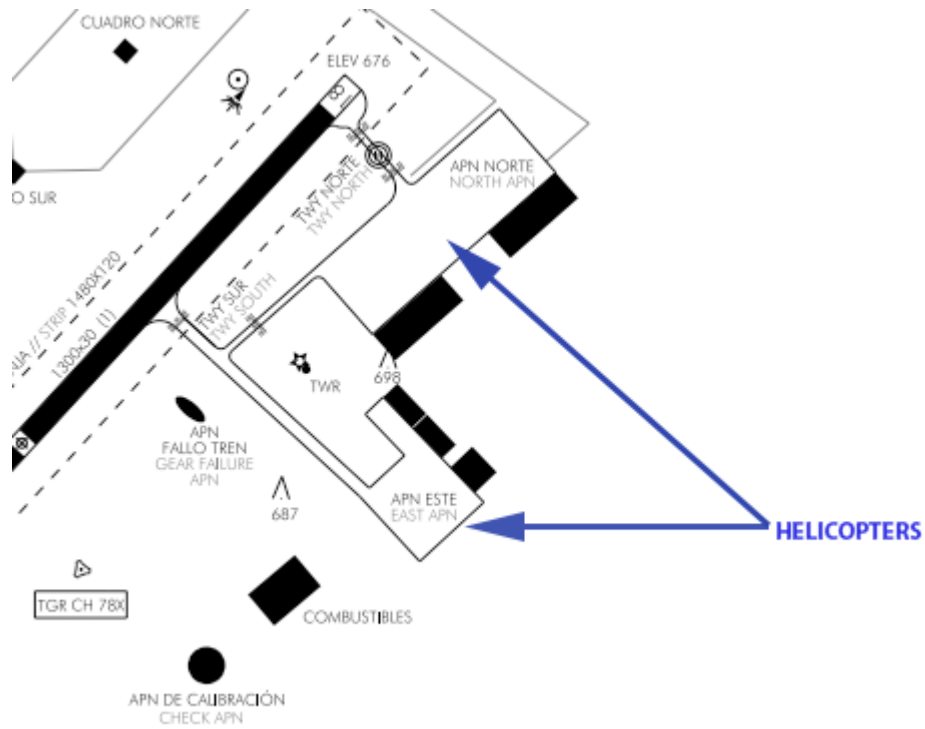
2. BRIEFING

It is traditional in Spain, every year, on the last weekend of May, to celebrate Armed Forces Day with an air parade, overflying over a random city, selected by the Armed Forces. This event is mostly composed by Spanish Airforce and Armada airplanes, it requires good formation flight capabilities, and sharp coordination with other flights and flight controllers.

Transports and Fighters will be deployed to Málaga AB (LEMG), Helicopters at Armilla AB (LEGA), previously to 28th May. Parking positions will be assigned before the event according with the type of airplane, formation, etc.



MALAGA AIR BASE (LEMG)



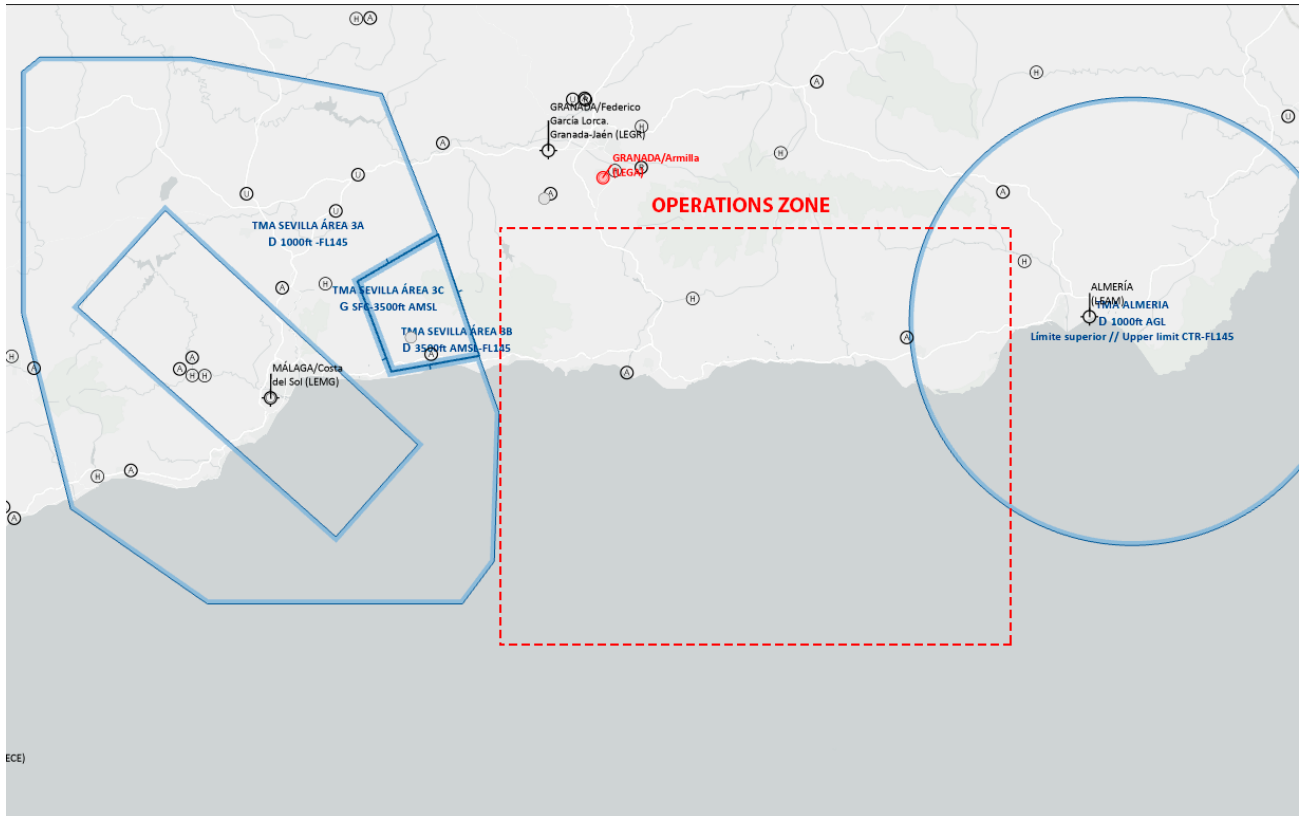
ARMILLA AIR BASE (LEGA)

Every formation will have a scheduled take off time. Every formation leader will be responsible to start up and be ready to take off on time. Data related with flights will be updated in the following table:

TABLE

2.1 LOCATION

The area for this exercise will be the Spanish Costa del Sol, the temperatures that can be expected during this time of year are hot +25°C, which will affect the performance of the aircraft. It will also be necessary to consider the possible turbulence caused by solar radiation.



2.2 MISSION DATA

Low risk level expected for this exercise.

2.3 GROUND OPERATIONS

The maximum taxiing speeds will be 30 knots on taxiways and 15 knots in the parking area or platform unless the situation demands otherwise. During taxiing, a separation between aircraft will be maintained, it will be two aircraft fuselages (approximately 400ft) to avoid possible FOD (objects that can damage the engines), in addition to keeping the "symmetry" of all taxiing aircraft.

During the taxiing of more than one aircraft, they will taxi along the sides of the taxiway (alternate lanes) (if there are no obstacles that prevent doing it), always leaving the separation of a fuselage.

The frequencies for the exercise will be the following:

LECS_MIL_CTR: 125.775. (All units).

LECS_CTR: 132.475.

LEGA_MIL_TWR: 118.700. (Helicopters).

LEMG_W_TWR: 118.150. (Transports & Fighters).

LEMG_E_APP: 118.455. (Transports & Fighters).

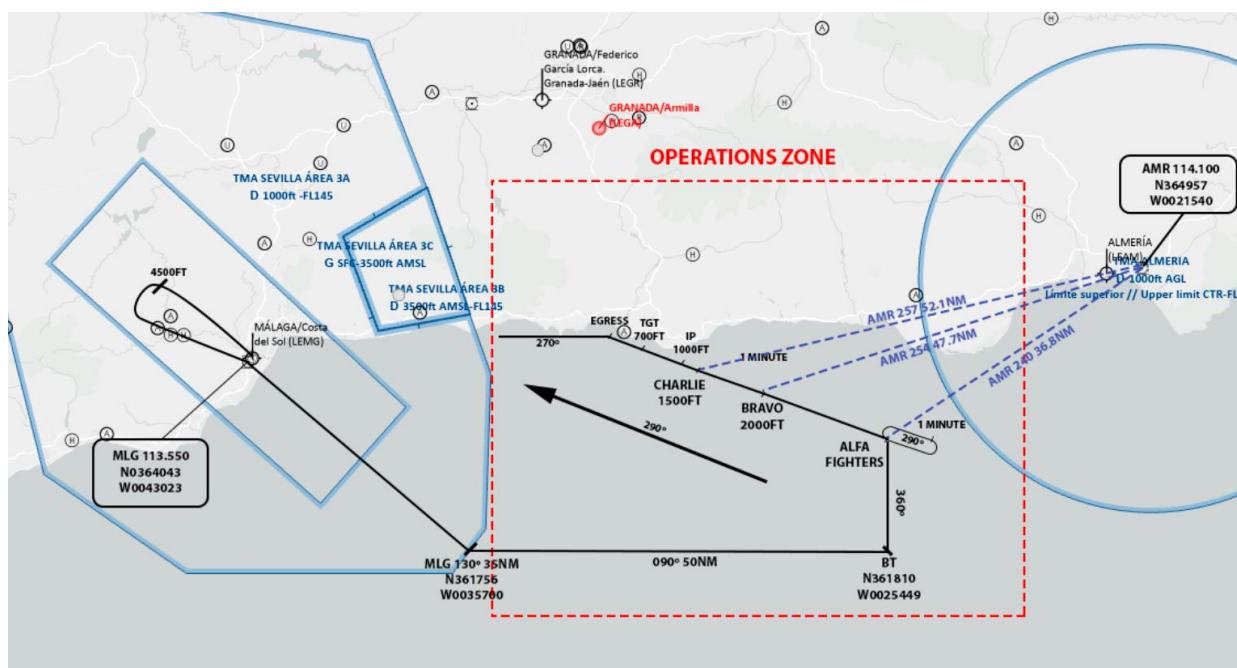
SPECIAL OPS DISCORD (All units).

2.4 OPERATIONS SEQUENCE

FIGHTERS

RUNWAY 31

After taking-off, fighters will proceed on runway heading until pass 4500FT, then flights will proceed DCT MLG, then flights will follow R130 MLG for 35NM, then flights will turn left heading 090° for 50NM Base Turn **(BT)** (N361810 W0025449) then will turn left heading north 13.4NM to pass **ALFA** (N363124 W0025459) 240 36.8NM AMR at ordered level. Fighters will hold over ALFA at scheduled holding altitude, right turns recommended, 1 minute leg.

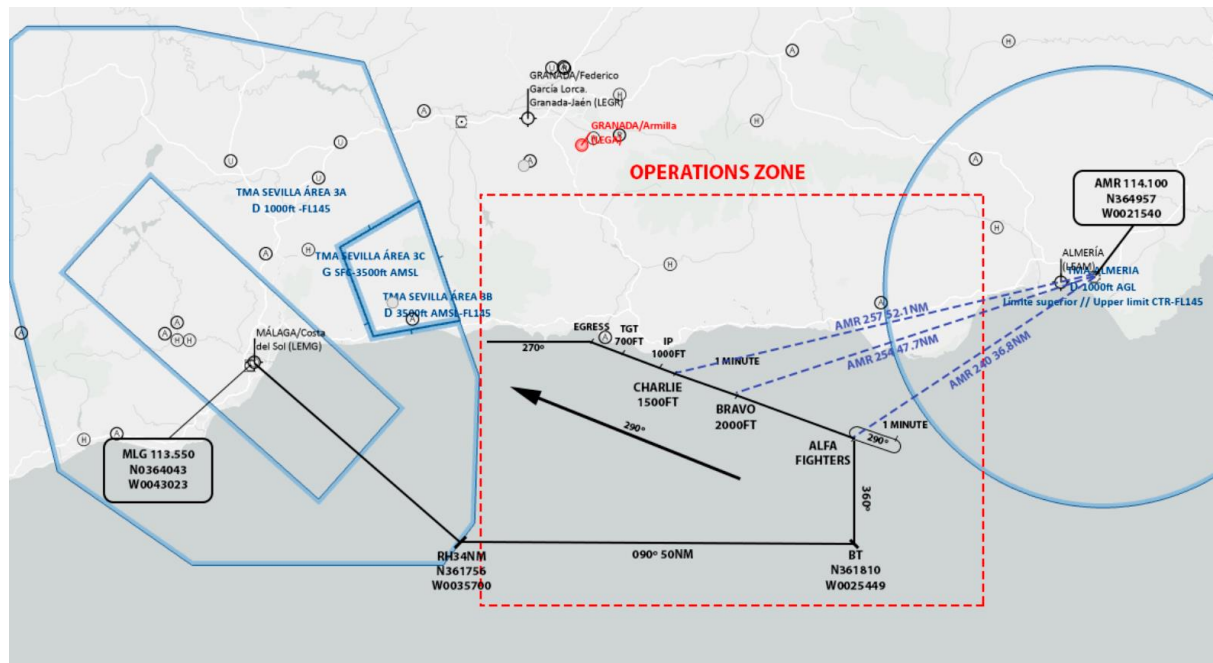


After **ROLEX** at **ALFA**, Fighters will proceed on heading 290° until passing **BRAVO** (N363622 W0031229) **at 2000ft.** Then Fighters will continue heading 290° until passing **CHARLIE** (N363802 W0031821) **at 1500ft.** Then Fighters will proceed direct IP.

AT BRAVO AND CHARLIE THERE WERE AIRCRAFTS SO FIGHTERS HAVE TO PASS AT REQUESTED ALTITUDE

RUNWAY 13

After taking-off, fighters will proceed on runway heading until 34NM DME MLG, then flights will turn left heading 090° for 50NM Base Turn **(BT)** (N361810 W0025449) then will turn left heading north 13.4NM to pass **ALFA** (N363124 W0025459) 240 36.8NM AMR at ordered level. Fighters will hold over ALFA at scheduled holding altitude, right turns recommended, 1 minute leg.



After ROLEX at ALFA, Fighters will proceed on heading 290° until passing **BRAVO** (N363622 W0031229) **at 2000ft**. Then Fighters will continue heading 290° until passing **CHARLIE** (N363802 W0031821) **at 1500ft**. Then Fighters will proceed direct IP.

AT BRAVO AND CHARLIE THERE WERE AIRCRAFTS SO FIGHTERS HAVE TO PASS AT REQUESTED ALTITUDE

IP

The IP will be 2NM 170° out of **Cabo Scratif** (N363943 W0032414), last moment to make final adjustments and fly a cool close formation. Try to be sharp and be aligned for the TGT fly by.

TGT will be in **Motril Pier** (N364150 W0033114) where royal family and national authorities will enjoy the sights.

Fighters will overfly at 300 KIAS and 700ft MSL, following a “train” of formations, as scheduled in the previous table. Every formation will have a fixed time over target.



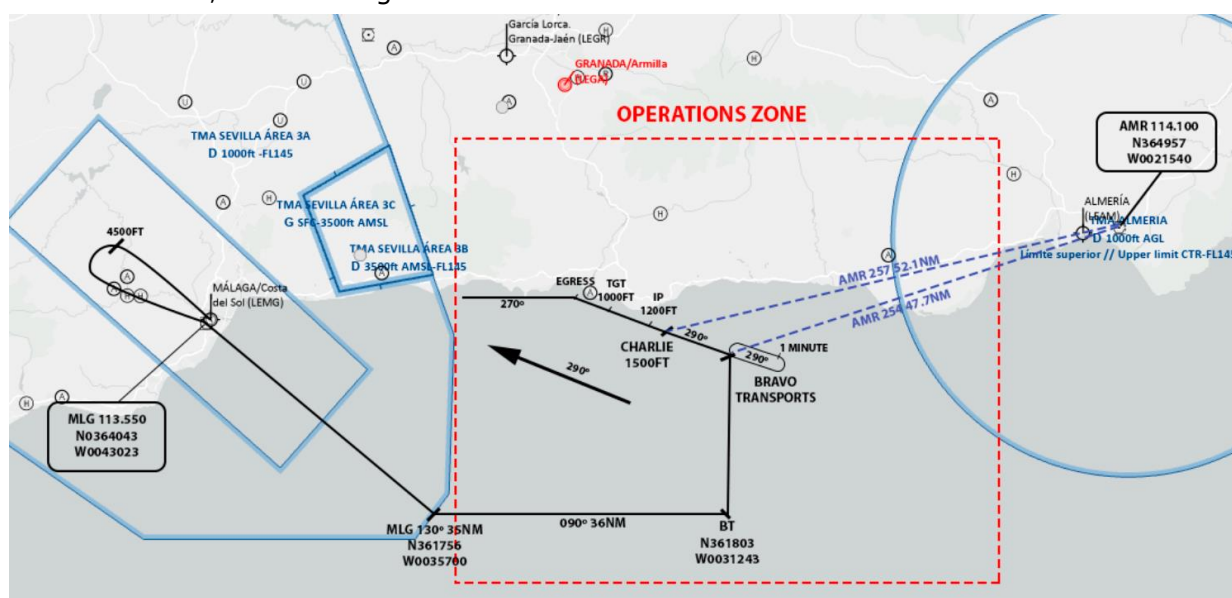
After passing Punta del Santo (**EGRESS**), Fighters will turn heading 270° and climb to FL90, then will turn right direct GDA VOR 113.400. If formations want to do other fly by, ATC will give orders proceed direct ALFA to make the “train of formations” proceed to ALFA to start again the fly by.

TRANSPORTS

RUNWAY 31

After taking-off, Transports fighters will proceed on runway heading until pass 4500FT, then flights will proceed DCT MLG, then flights will follow R130 MLG for 35NM, then flights will turn left heading 090° for 36NM Base Turn **(BT)** (N361803 W0031243) then will turn left heading north 18.5NM to pass **BRAVO** (N363622 W0031229).

Transports will hold over **BRAVO** (N363622 W0031229) at scheduled holding altitude, right turns recommended, 1 minute leg.



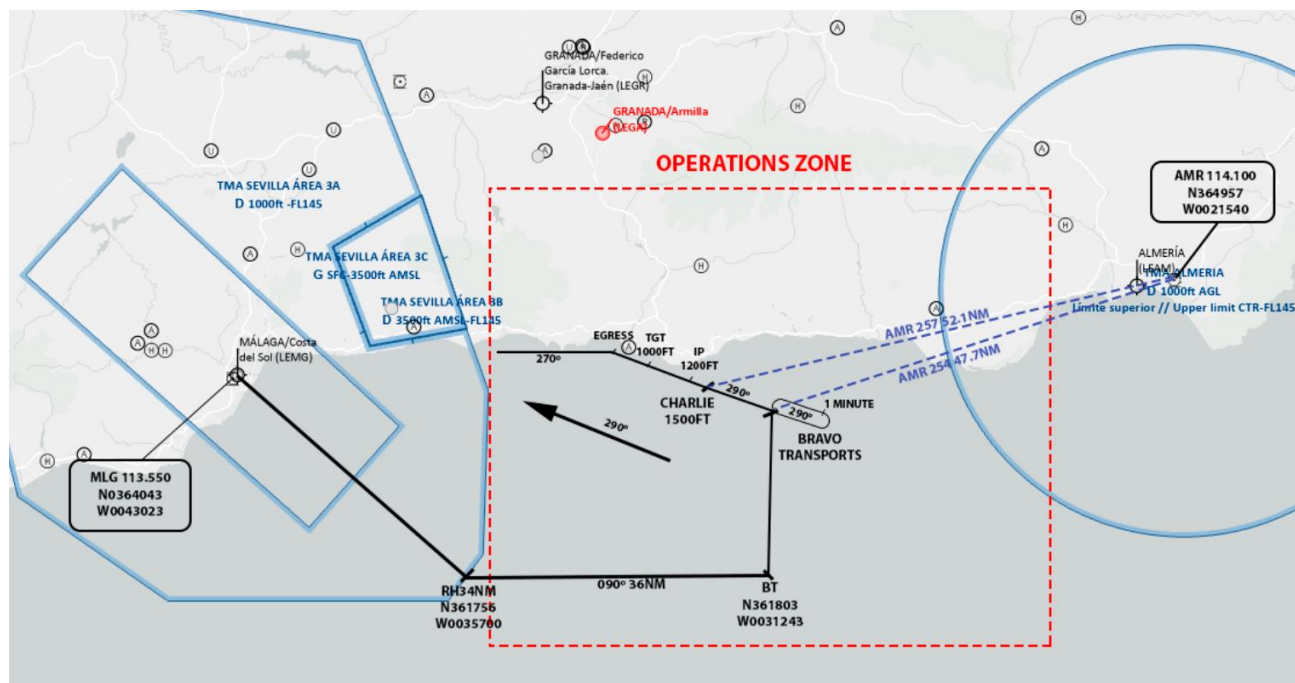
After ROLEX at BRAVO, Transports will proceed on heading 290° until passing **CHARLIE** (N363802 W0031821) **at 1500ft.**

AT CHARLIE THERE WERE AIRCRAFTS SO FIGHTERS HAVE TO PASS AT REQUESTED ALTITUDE

RUNWAY 13

After taking-off, Transports will proceed on runway heading until 34NM DME MLG, then flights will turn left heading 090° for 36NM Base Turn **(BT)** (N361803 W0031243) then will turn left heading north 18.5NM to pass **BRAVO** (N363622 W0031229).

Transports will hold over **BRAVO** (N363622 W0031229) at scheduled holding altitude, right turns recommended, 1 minute leg.



After ROLEX at BRAVO, Transports will proceed on heading 290° until passing **CHARLIE** (N363802 W0031821) **at 1500ft.**

AT CHARLIE THERE WERE AIRCRAFTS SO FIGHTERS HAVE TO PASS AT REQUESTED ALTITUDE

IP

The IP will be 2NM 170° out of **Cabo Scratif** (N363943 W0032414), last moment to make final adjustments and fly a cool close formation. Try to be sharp and be aligned for the TGT fly by.

TGT will be in **Motril Pier** (N364150 W0033114) where royal family and national authorities will enjoy the sights.

Transports will overfly at 200 KIAS and 1000ft MSL, following a “train” of formations, as scheduled in the previous table. Every formation will have a fixed time over target.

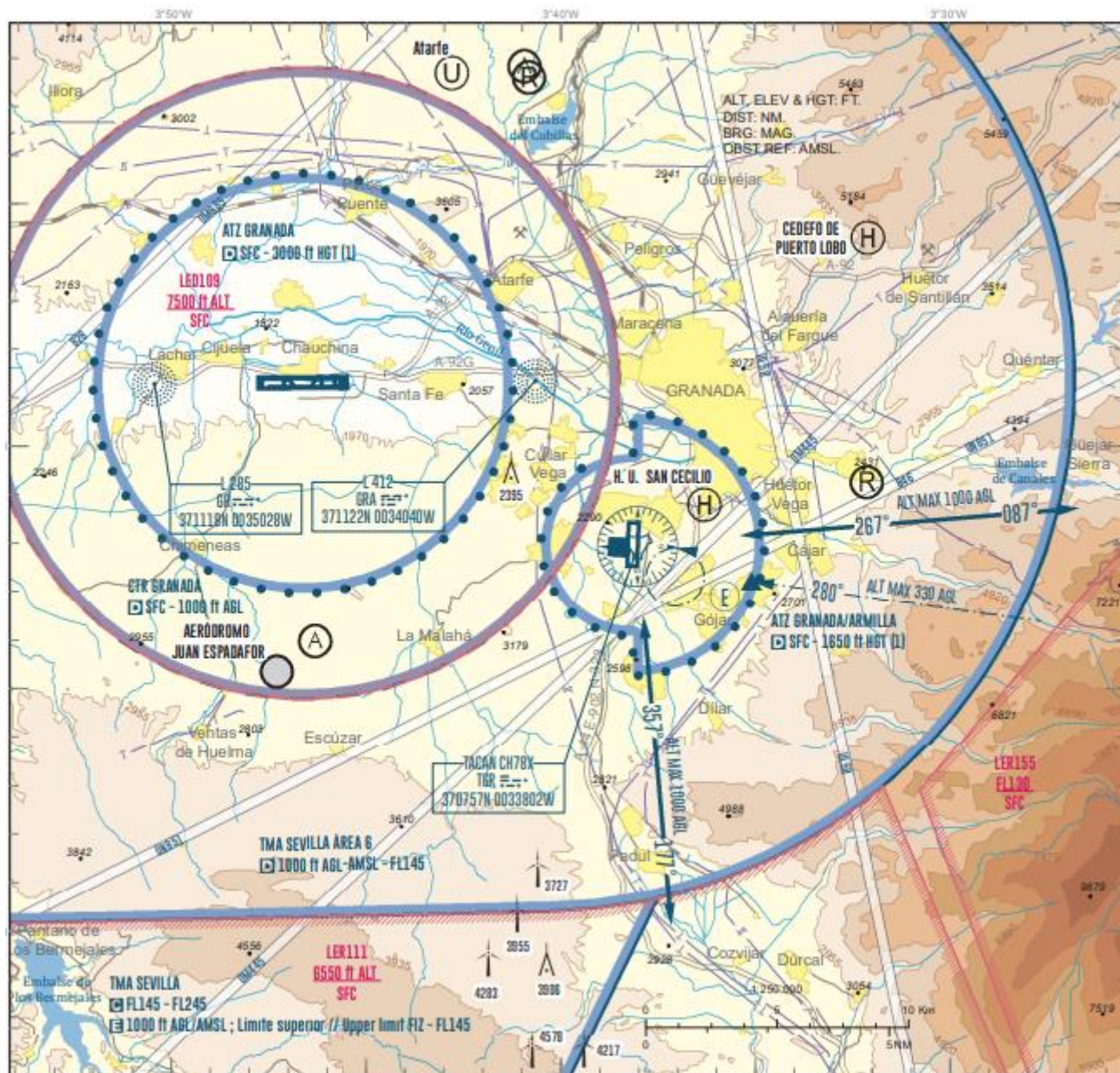


After passing **Punta del Santo**, Transports will turn heading 270° and climb to 5000FT MSL, then will turn right direct GDA VOR 113.400 Climbing to FL90. If formations want to do other fly by, ATC will give orders to proceed to BRAVO to make the “train of formations” proceed to BRAVO to start again the fly by.

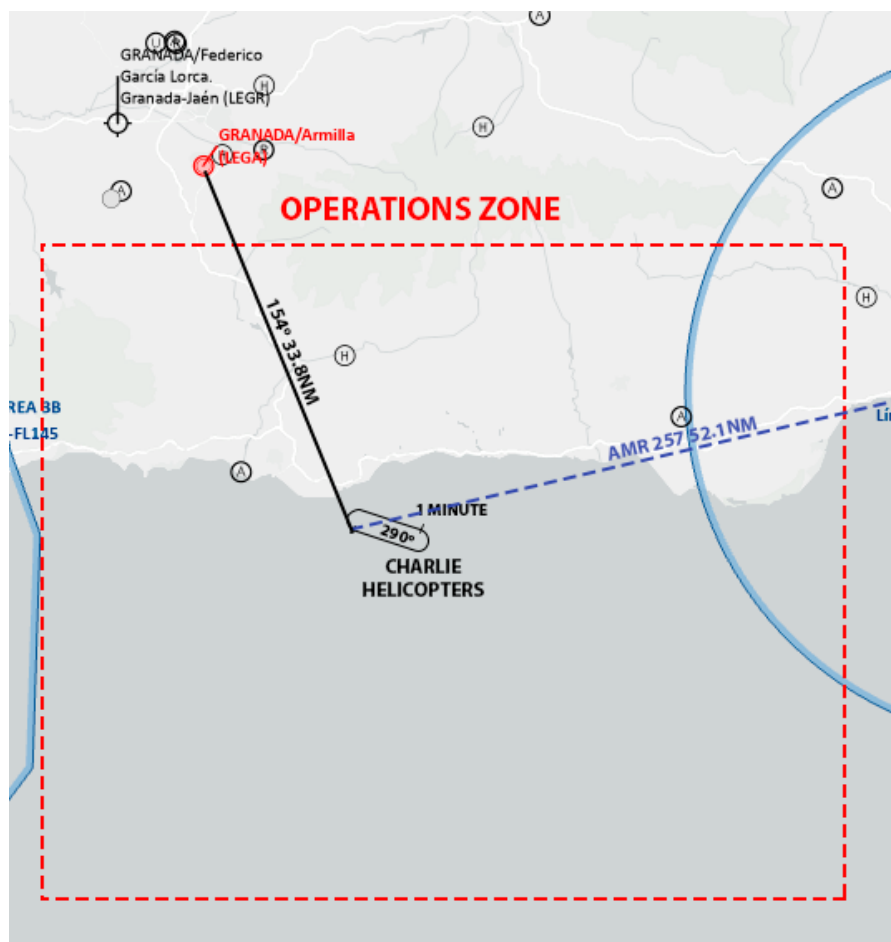
Helicopters

SEQUENCE

After taking-off, all helicopters will proceed VFR via South (177°), leaving Armilla, helicopters will proceed direct **CHARLIE** (N363802 W0031821) at scheduled holding altitude, right turns recommended, 1 minute leg.



ONLY FOR SIMULATION PURPOSES – NOT VALID FOR REAL LIFE



After ROLEX at **CHARLIE**, Transports will proceed on heading 290° direct to IP.

IP

The IP will be 2NM 170° out of **Cabo Scratif** (N363943 W0032414), last moment to make final adjustments and fly a cool close formation. Try to be sharp and be aligned for the TGT fly by.

TGT will be in **Motril Pier** (N364150 W0033114) where royal family and national authorities will enjoy the sights.

Helicopters will overfly at 120 KIAS and 300ft MSL, following a “train” of formations, as scheduled in the previous table. Every formation will have a fixed time over target.

After passing **Punta del Santo**, helicopters will turn heading 270°, then direct to Armilla. If formations want to do other fly by, ATC will give orders to make the “train of formations” proceed to BRAVO to start again the fly by.

IF NEEDED, FOR EACH FORMATION, PUSH TIME WILL BE GIVEN VIA DISCORD.

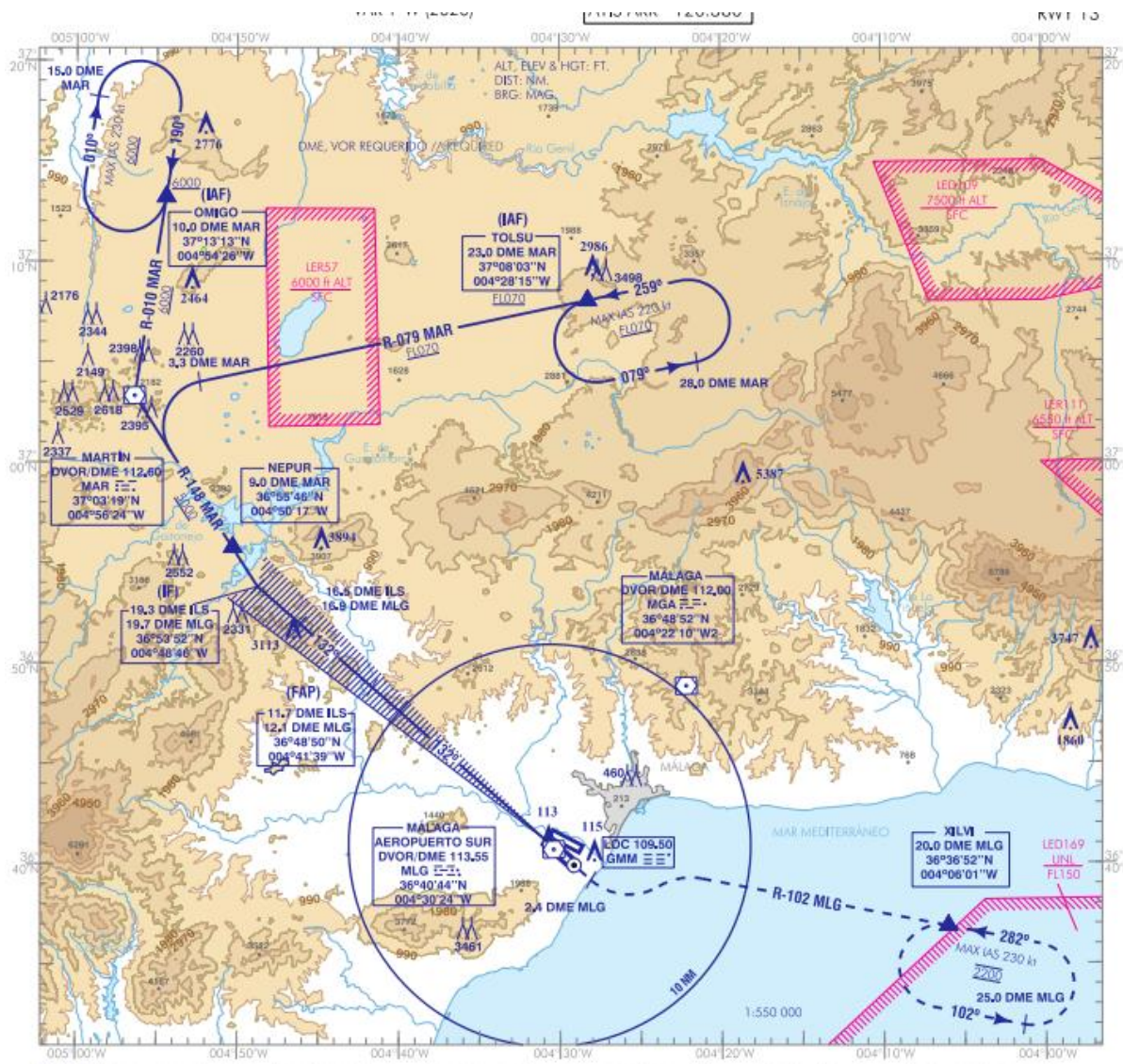


Fighter and transports arrivals

RUNWAY 13

If runway 13 in force, after reaching GDA, aircrafts will proceed to TOLSU (N370803 W0042815) at FL90 to proceed for the [ILS Z Approach RWY 13](#).

By pilot request, overhead pattern is available. After landing taxi to the same parking that you had before the flight, as instructed by ATC.



If traffic congestion, ATC will provide vectors for arrival.

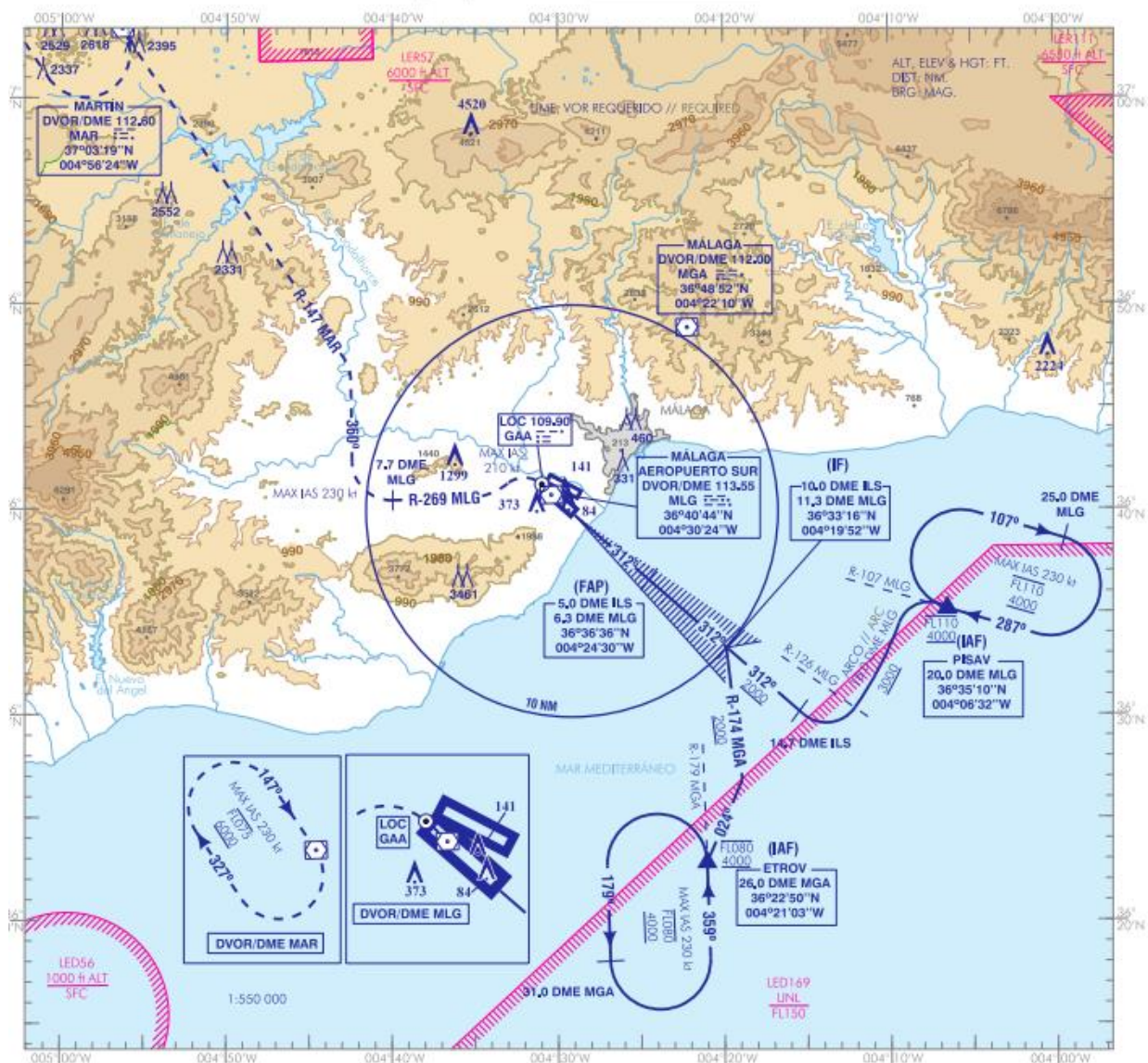
By Pilot Request, arrivals can be in VFR.

RUNWAY 31

If runway 31 in force, after reaching GDA, aircrafts will proceed to MGA 112.00 at FL90, then to PISAV (N363510 W0040632) at FL110 to proceed for the [ILS Z Approach RWY 31](#).

By pilot request, overhead pattern is available. After landing taxi to the same parking that you had before the flight, as instructed by ATC.

ONLY FOR SIMULATION PURPOSES – NOT VALID FOR REAL LIFE



If traffic congestion, ATC will provide vectors for arrival.

By Pilot Request, arrivals can be in VFR.

2.5 WHAT IF

- Be on time, and the sooner the better, check that everything works, check model matching. We recommend the use of MAIW models as model match.
- No weather abort.
- JOIN FS GLOBAL SERVER IN FORCE.

ONLY FOR SIMULATION PURPOSES – NOT VALID FOR REAL LIFE

2.6 MISSION SPECIFIC DATA

Suggested Flight plan:

Y flight plan.

Fighters/Transports: LEMG/LEMG ALT LERT/LEMO NXXXXFXXX ULPEP OAT VFR NESDA/NXXXXFXXX IFR
VFR flight plan.

Helicopters: LEGA/LEGA NXXXXAXXX OAT CHARLIE

SCENERY FSX/P3D

<https://library.avsim.net/eseach.php?DLID=162406>

<https://secure.simmarket.com/aerosoft-malaga-professional-p3d4.phtml>

<https://flyawaysimulation.com/downloads/files/9236/fsx-armilla-lega-x-scenery/>

Scenery MSFS2020

<https://es.flightsim.to/file/7467/lemg-malaga-airport>

<https://es.flightsim.to/file/21502/lega-granada-armilla>

Scenery X-plane

<https://forums.x-plane.org/index.php?/files/file/30213-lemg-malaga-airport/>

<https://forums.x-plane.org/index.php?/forums/topic/179915-lega-armilla/>

Charts

MÁLAGA (LEMG)

<https://aip.enaire.es/AIP/#LEMG>

<https://es.ivao.aero/atc/lcs/aeropuertos/lemg>

ARMILLA (LEGA)

<https://aip.enaire.es/AIP/#LEGA>

<https://es.ivao.aero/atc/lcs/aeropuertos/lega>

Required data from VSOGS.

Every VSOG representative will send to es-specialops@ivao.es the following info:

- Pilot names and IVAO IDs
- Type of aircraft
- Tactical callsign to use
- Capabilities of each pilot (flight leader or not, tactical role, dissimilar formation)

NOTAMS

FOR THE EVENT

A: ES052801/23

B: LECS

C: SFC – FL200

D: 28/05/2023 15:30:00Z

E: 28/05/2023 18:30:00Z

F: DIFAS 23 AIR PARADE

FOR PRACTICE

A: ES052401/23

B: LECS

C: SFC – FL200

D: 24/05/2023 15:30:00Z

E: 27/05/2023 18:30:00Z

F: DIFAS 23 AIR PARADE PRACTICES

BRIEFING 16:30Z

Briefing will be at [Special Ops Discord](#) at 16:30Z.

For coordination during the event, we will use IVAO [Special Ops Discord](#).