



This document constitutes divisional Special Operations Order as defined by Chapter 10 of IVAO Special Operations Regulations; compliance with this divisional SO Order is mandatory when operating within the concerned division. Refer to SO Regulations available at <http://sod.iviao.aero/regulations>

Divisional Special Operations Order for

Romania (RO)

Item 1. Permanent segregated airspace reserved for exclusive use by Special Operations flights

Area type and identification	Conditions of use	Lateral limits	Vertical limits	Activation details
LRD01 (JETS) LOWER and UPPER LEVEL	Reserved and designated for exclusive use by SO flight only	444735N0284344E-445010N0290000E-445500N0290000E-445500N0285300E-445025N0284130E	1000' – FL500	By NOTAM (on request by email at least 72 hrs in advance from IVAO members)
LRD06 (JETS) LOWER and UPPER LEVEL	Reserved and designated for exclusive use by SO flight only	442400N0284225E-442930N0285535E-442933N0293107E-442412N0293156E-440901N0292644E-440427N0292219E-441333N0285130E-442205N0284225E	1000' – FL500	By NOTAM (on request by email at least 72 hrs in advance from IVAO members)
LRD07 LOWER and UPPER Level (JETS)	Reserved and designated for exclusive use by SO flight only	442526N0284230E-442930N0285535E-442505N0290112E-441942N0290049E	1000' – FL500	By NOTAM (on request by email at least 72 hrs in advance from IVAO members)
LRD70 LOWER and UPPER LEVEL (HELICOPTERS) LOW LEVEL	Reserved and designated for exclusive use by SO flight only	434500N0285100E-435500N0285100E-435500N0290800E-434500N0290800E	300' – FL100	By NOTAM (on request by email at least 72 hrs in advance from IVAO members)
LRTRA41 UPPER LEVEL (HELICOPTERS)	Reserved and designated for exclusive use by SO flight only	444534N0282900E-442500N0293100E-445000N0295100E-451000N0291400E-450342N0285449E-450126N0283000E	GND – FL100	By NOTAM (on request by email at least 72 hrs in advance from IVAO members)



MOUNTAINS TRAINING				
LRD71 (JETS) LOWER and UPPER LEVEL	Reserved and designated for exclusive use by SO flight only	434500N0290800E-435500N0290800E-435500N0293000E-434500N0293000E	1000' – FL500	By NOTAM (on request by email at least 72 hrs in advance from IVAO members)
LRD72 (JETS) LOWER and UPPER LEVEL	Reserved and designated for exclusive use by SO flight only	435500N0290800E-440500N0290800E-440500N0293000E -435500N0293000E	1000' – FL500	By NOTAM (on request by email at least 72 hrs in advance from IVAO members)
LRD73 (JETS) LOWER and UPPER LEVEL	Reserved and designated for exclusive use by SO flight only	440500N0290800E-441500N0290800E-441500N0293000E-440500N0293000E	1000' – FL500	By NOTAM (on request by email at least 72 hrs in advance from IVAO members)
LRD74 (JETS) LOWER and UPPER LEVEL	Reserved and designated for exclusive use by SO flight only	441500N0285100E-442500N0285100E-442500N0290800E-441500N0290800E	1000' – FL500	By NOTAM (on request by email at least 72 hrs in advance from IVAO members)
LRD75 (JETS) LOWER LEVEL	Reserved and designated for exclusive use by SO flight only	441500N0290800E-442500N0290800E-442500N0293000E-441500N0293000E	1000' – FL500	By NOTAM (on request by email at least 72 hrs in advance from IVAO members)
LRD76 (JETS) LOWER LEVEL	Reserved and designated for exclusive use by SO flight only	445600N0293600E-445800N0295700E-444300N0295400E-445200N0293600E	1000' – FL500	By NOTAM (on request by email at least 72 hrs in advance from IVAO members)

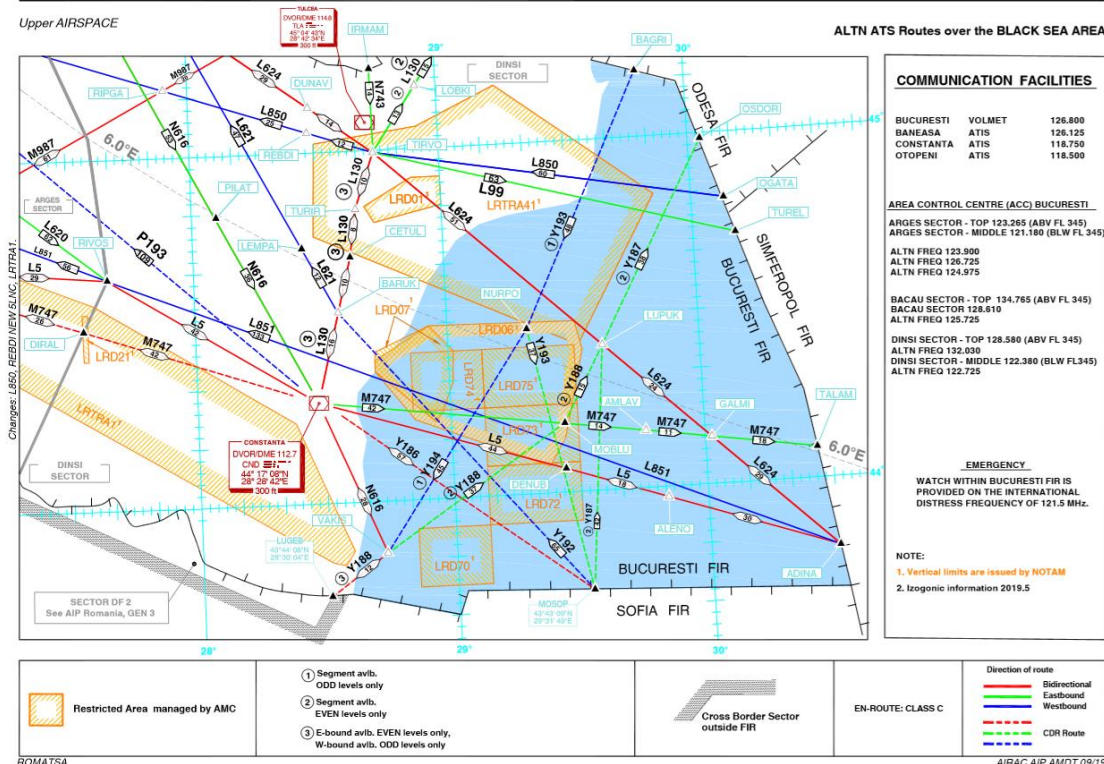


AIP
ROMANIA

ENR 6-1a
07 NOV 2019

Upper AIRSPACE

ALTN ATS Routes over the BLACK SEA AREA

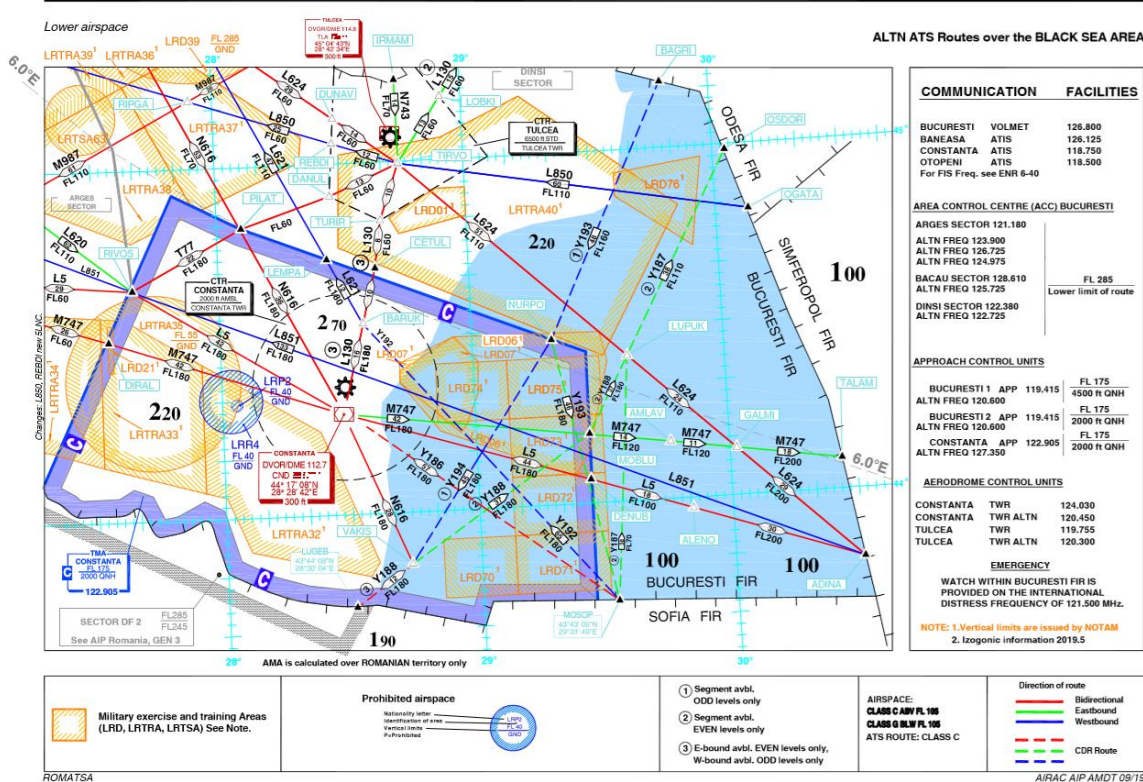


AIP
ROMANIA

ENR 6-2a
07 NOV 2019

Lower airspace

ALTN ATS Routes over the BLACK SEA AREA



Note. Also refer to IVAO NOTAM system available at <http://notams.iviao.aero> for other information on airspace restrictions and reservations and for other operationally significant information.



Item 2. Operational restrictions and mandatory procedures for Special Operations flights

1. Prohibited areas (LRP) shall not be entered.
2. Restricted areas (LRD and LRR) and special activity areas may be entered if-the restrictions permit, or with ATC clearance.
4. Over Romanian territory supersonic flights shall only be performed under radar monitoring and must be coordinated in advance with the appropriate ATC unit.
5. The minimum flight level for supersonic flight is FL330 (10000 m).
6. The following maximum airspeeds shall not be exceeded over land and sea: a) below FL 330 to FL 100: Mach 0.95; b) below FL 100: Mach 0.9, but not more than 600 KIAS, with ATC approval.

Item 3. Controlling military units and other SO units other than civil ATS

Identifier	Callsign	Frequency (MHz)	Vertical limits	Traffic	FRA
LRBB_MIL_CTR	Bucharest Military	130.000	4000' - FL600	MIL only	ADC
LRCT_APP	TOPAZ Approach	125.400	GND - 6000 ft	MIL only	ADC
LRBC_MIL_APP	AGAT Approach	124.740	GND - 6000 ft	MIL only	ADC
LRBO_APP	SAFIR Approach	125.400	GND - 6000 ft	MIL only	ADC
LRFT_APP	RUBIN Approach	125.025	GND - 6000 ft	MIL only	ADC
LROP_MIL_APP	ONIX Approach	125.250	GND - 6000 ft	MIL only	ADC
LROP_MIL_TWR	ONIX Tower	132.300	n.a.	MIL only	AS3

GCA required to occupy any of the above positions for **all** non RO division members.

Item 4. Divisional manual on controlling military units and other SO units

Under construction

Item 5. IVAO members registered elsewhere authorised to perform SO flights

None

Note. It is permissible for IVAO members to perform SO flights that constitute participation in international SO events, international SO tours, or divisional SO tours without authorisation of any division.

Item 6. SOGs registered elsewhere authorised to perform SO flights

None

Note. It is permissible for SOGs to perform SO flights that constitute participation in international SO events, international SO tours, or divisional SO tours without authorisation of any division.

Item 7. SO—related Letters of Agreements

None

— END OF DIVISIONAL SO ORDER —