



This document constitutes divisional Special Operations Order as defined by Chapter 10 of IVAO Special Operations Regulations; compliance with this divisional SO Order is mandatory when operating within the concerned division. Refer to SO Regulations available at <http://sod.iviao.aero/regulations>

Divisional Special Operations Order for

Portugal Division

Item 1. Permanent segregated airspace reserved for exclusive use by Special Operations flights

Area type and identification	Conditions of use	Lateral limits			Vertical limits	Activation details
LPR60B - Monte Real	Reserved and designated for exclusive use by SO flights only	403856N	0091505W	-	1000' to FL145	Permanently active
		403730N	0090004W	-		
		403551N	0084311W	-		
		400416N	0083929W	-		
		400045N	0083905W	-		
		394325N	0083705W	-		
		393605N	0084259W	-		
		392055N	0085505W	-		
		392055N	0094705W	-		
		401159N	0092633W	-		
		403856N	0091505W	-		
LPR42B - Sintra	Reserved and designated for exclusive use by SO flights only	392055N	0094705W	-	1000' to FL090	Permanently active
		392055N	0085505W	-		
		390810N	0090525W	-		
		385738N	0091104W	-		
		384940N	0091519W	-		
		384533N	0092709W	-		
		385400N	0100000W	-		
		392055N	0094705W	-		
LPR40A - Ovar	Reserved and designated for exclusive use by SO flights only	410400N	0085905W	-	1000' to 2000'	By NOTAM (on email request at least 72 hours in advance from IVAO users
		410400N	0084559W	-		
		410400N	0083005W	-		
		405251N	0083005W	-		
		404924N	0083005W	-		
		404924N	0085905W	-		
		405519N	0085905W	-		
		410400N	0085905W	-		



International Virtual Aviation Organisation

HQ Special Operations Department

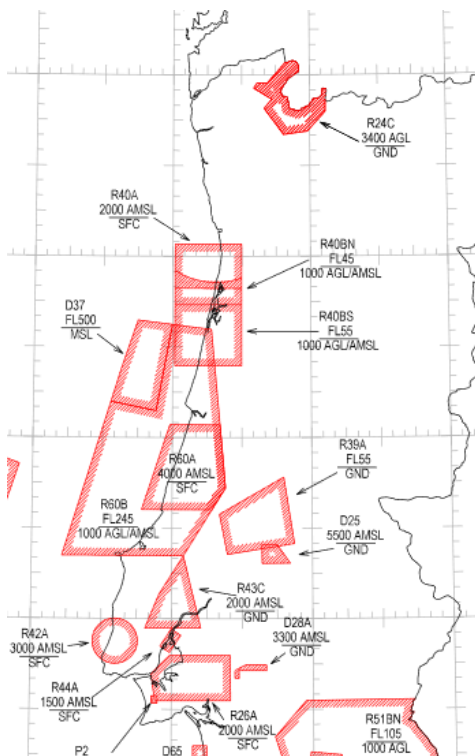
Divisional SO Order (form edition A)

LPR40BN - Ovar	Reserved and designated for exclusive use by SO flights only	405519N 405251N 404924N 404400N 404400N 404924N 405519N	0085905W 0083005W 0083005W 0083005W 0085905W 0085905W 0085905W	- - - - - - -	1000' to FL045	By NOTAM (on email request at least 72 hours in advance from IVAO users)
LPR40BS - Ovar	Reserved and designated for exclusive use by SO flights only	402346N 404400N 404400N 402346N 402346N	0083005W 0083005W 0085905W 0085905W 0083005W	- - - - -	1000' to FL055	By NOTAM (on email request at least 72 hours in advance from IVAO users)
LPD67 - Sea W of Monte Real	Reserved and designated for exclusive use by SO flights only	404056N 403856N 401159N 392055N 392055N 395112N 402000N 404056N	0094405W 0091505W 0092633W 0094705W 0101829W 0100542W 0095322W 0094405W	- - - - - - - -	4000' to FL300	Permanently active
LPR51BN - Beja	Reserved and designated for exclusive use by SO flights only	383255N 383309N 382918N 382619N 382517N 381018N 381238N 381300N 380700N 380655N 382055N 383255N	0080256W 0071707W 0071745W 0071920W 0071717W 0070421W 0070036W 0065620W 0065819W 0081016W 0081604W 0080256W	- - - - - - - - - - - -	1000' to FL105	By NOTAM (on email request at least 72 hours in advance from IVAO users)
LPR51BS - Beja	Reserved and designated for exclusive use by SO flights only	380518N 380221N 380100N 380237N 380000N 380004N 375918N 375320N	0070000W 0065939W 0070220W 0070539W 0070820W 0071133W 0071440W 0071621W	- - - - - - - -	1000' to FL105	By NOTAM (on email request at least 72 hours in advance from IVAO users)

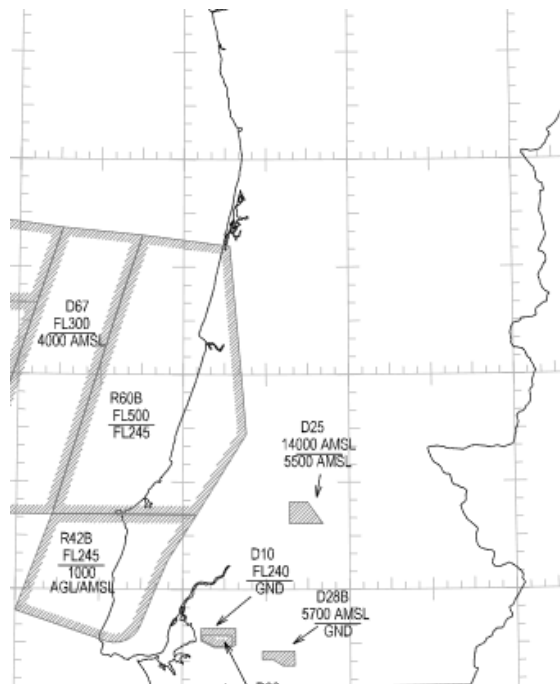


		374859N	0071920W	-	
		374600N	0072400W	-	
		373359N	0073001W	-	
		373301N	0073000W	-	
		373339N	0073100W	-	
		373121N	0073059W	-	
		373119N	0072941W	-	
		372457N	0072619W	-	
		372503N	0072638W	-	
		372455N	0075304W	-	
		373551N	0075731W	-	
		380314N	0080845W	-	
		380655N	0081016W	-	
		380700N	0065819W	-	
		380518N	0070000W	-	

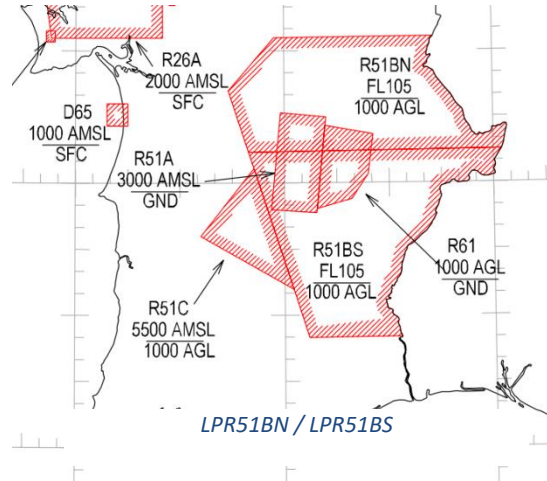
NOTE: These pictures are from Portuguese AIP, the lateral limits are the same. However, the vertical limits are adapted to IVAO reality and environment. For the vertical limits DO NOT refer to the pictures below.



LPR60B / LPR41BN / LPR51BS



LPR42B / LPR60B / LPD67



Item 2. Operational restrictions and mandatory procedures for Special Operations flight

Inside the R40BN, R40BS, R60B and R42A restricted areas there are working areas, not the same as in real-life, but as similar as possible, so that our pilots can fill their flight plans and fly inside those areas for training and special operations missions.

These areas have as main objective to uniformize procedures between IVAO reality and the real world and for both pilots and air traffic controllers be aware of the procedures inside the segregated airspace.

The working areas are:

R40A & R40BN & R40BS:

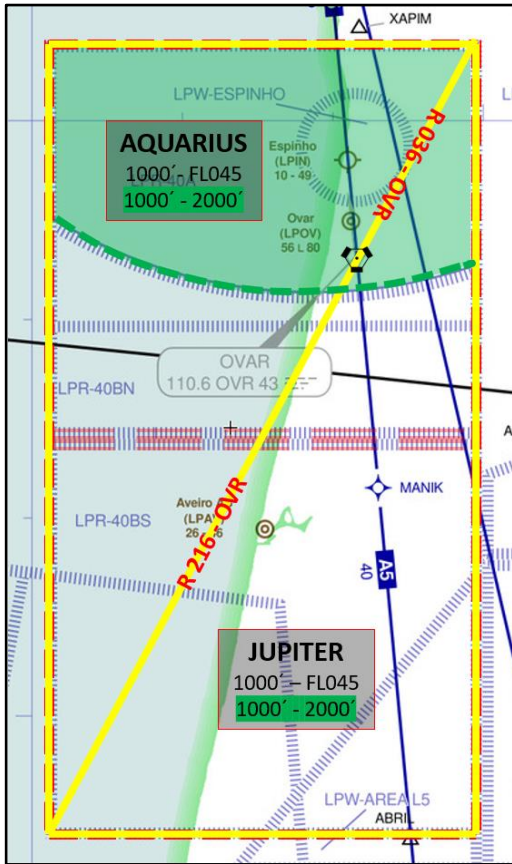
1. AQUARIUS [1000' - FL045] restricted up to 2000' within LPR40A lateral limits (GREEN AREA)
2. JUPITER [1000' - FL045] restricted up to 2000' within LPR40A lateral limits (GREEN AREA)

R60B:

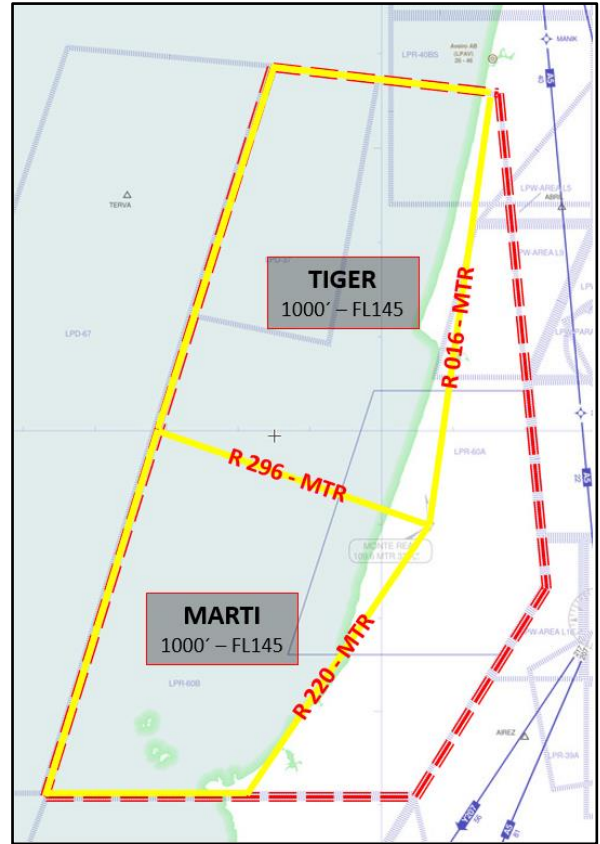
1. TIGER [1000' - FL145]
2. MARTI [1000' - FL145]

R42B:

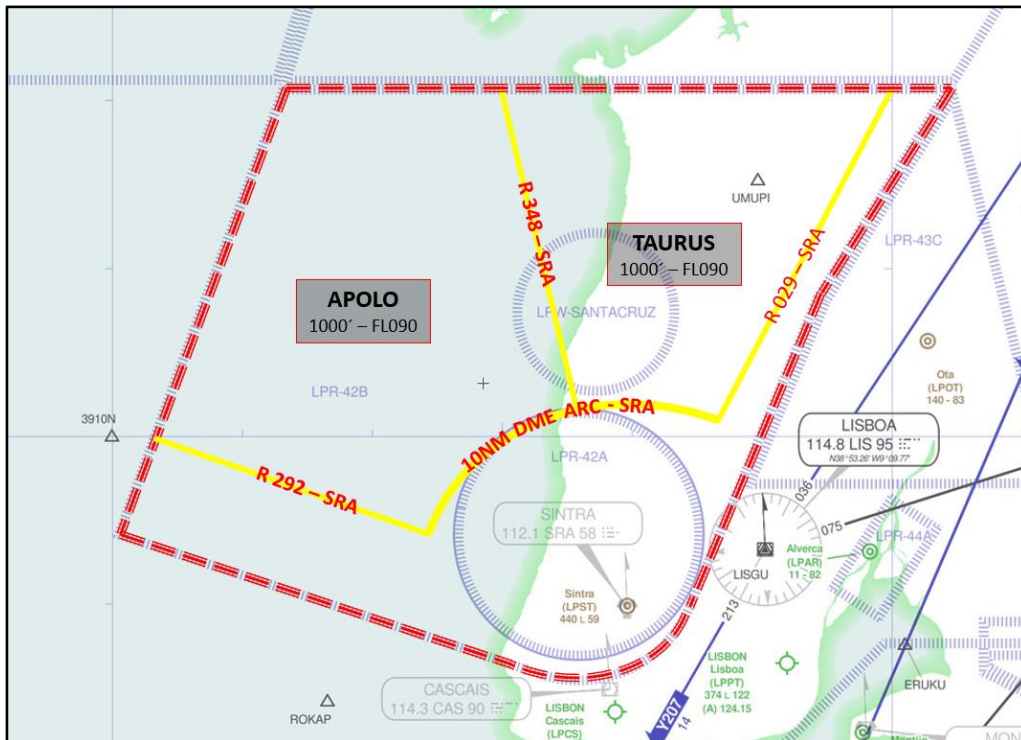
1. TAURUS [1000' - FL090]
2. APOLO [1000' - FL090]



LPR40BN & LPR40BS WORKING AREAS



LPR60B WORKING AREAS



LPR42B WORKING AREAS



Item 3. Controlling military units and other SO units other than civil ATS

Identifier	Callsign	Frequency	Area of Responsibility	Services Provided	Types of Traffic	FRA
LPAM_MIL_CTR	Lisboa Militar	131.050	LPPC FIR (Except Madeira Sector)	Separation between IFR-IFR, IFR-VFR and Traffic Info VFR-VFR	All military traffic and VFR (optional).	ADC
LPAM_INF_CTR	Lisboa Information	123.750	LPPC FIR (Except Madeira Sector)	Traffic Info VFR-VFR	All VFR GAT	ADC
LPMR_MIL_GND	Monte Real Ground	119.725	Apron		Reserved for OAT	AS3
LPMR_MIL_TWR	Monte Real Tower	122.100	Monte Real CTR SFC- 4000'		Reserved for OAT	AS3
LPMR_APP	Monte Real Approach	121.700	R60B 4000'- FL500	Separation between IFR-IFR, IFR-VFR and Traffic Info VFR-VFR	OAT and transit GAT	ADC
LPST_MIL_GND	Sintra Ground	122.100	Apron		Reserved for OAT	SEC
LPST_MIL_TWR	Sintra Tower	119.850	Sintra CTR SFC- 3000'		Reserved for OAT	AS1
LPST_APP	Sintra Approach	118.600	R42B 3000'- FL245	Separation between IFR-IFR, IFR-VFR and Traffic Info VFR-VFR	OAT and transit GAT	AS3
LPLA_GND	Lajes Ground	121.900	Apron		All	SEC



LPLA_TWR	Lajes Tower	122.100	Lajes CTR SFC- 2000'		All	AS2
LPLA_APP	Lajes Approach	135.000	Lajes CTA 2000'- FL155	Separation between IFR- IFR, IFR-VFR and Traffic Info VFR- VFR	All	AS3
LPBJ_TWR	Beja Tower	130.400	Beja MCTR SFC- 3000'		All	AS1
LPBJ_APP	Beja Approach	130.100	LPR51BN & LPR52BS 3000'- FL250	Separation between IFR- IFR, IFR-VFR and Traffic Info VFR- VFR	All	AS3
LPOV_MIL_TWR	Ovar Tower	122.100	Ovar CTR SFC- 2000'		Reserved for OAT	AS3
LPOV_APP	Ovar Approach	118.600	LPR40BN &LPR40BS 2000'- FL045	Separation between IFR- IFR, IFR-VFR and Traffic Info VFR- VFR	OAT and transit GAT	AS3
LPMT_TWR	Montijo Tower	134.100	Montijo CTR SFC- 2000'		All	AS1
LPAR_TWR	Alverca Tower	119.225	Alverca CTR SFC- 1500'		All	AS1

Hold of a valid SO GCA in Portuguese division is necessary by sending an email to pt-soc@ivao.aero and pt-soac@ivao.aero with cc to pt-hq@ivao.aero.

Portuguese Division members also need a check before starting controlling OAT traffic in the position mentioned in the table above. The procedure is the same as mentioned above.



Item 4. Divisional manual on controlling military units and other SO units

Under development

Item 5. IVAO members registered elsewhere authorised to perform SO flights

None

Note. It is permissible for IVAO members to perform SO flights that constitute participation in international SO events, international SO tours, or divisional SO tours without authorisation of any division.

Item 6. SOGs registered elsewhere authorised to perform SO flights

None

Note. It is permissible for SOGs to perform SO flights that constitute participation in international SO events, international SO tours, or divisional SO tours without authorisation of any division.

Item 7. SO—related Letters of Agreements

None

— END OF DIVISIONAL SO ORDER —