



This document constitutes divisional Special Operations Order as defined by Chapter 10 of IVAO Special Operations Regulations; compliance with this divisional SO Order is mandatory when operating within the concerned division. Refer to SO Regulations available at <http://sod.ivao.aero/regulations>.

Divisional Special Operations Order for

Swiss Division

Item 1. Operational restrictions and mandatory procedures for Special Operations flights

The Military service is provided by LSAS_MIL_CTR for all Operational Air Traffic (OAT). The position is operated from SFC to UNL and provides information and guidance to all Military AB (Air Bases). OAT traffic shall follow VFR and IFR rules and respect airspace classification and limits. OAT and Swiss Military follow standard rules, in addition shall comply with the rules defined by the Special Operations HQ Department.

The crossing of active restricted airspace can be achieved with permission from an active ATC unit (civilian or military) responsible for the said restricted area, if safety and separation is maintained. If there is no ATC available, traffic not involved in SO activity shall not enter the active restricted airspace under any circumstance.

1. NOTAMS of activations must be requested via email 72 hours in advance, indicating:

- DOF
- Time of operations
- DEP/ARR airport(s)
- Airspace requested
- Call sign/s
- Type and number of acft
- Type of operations
- VIDs.
- Any other info needed.

Subsequently, a NOTAM of activation will be issued. If required, CH-HQ will reply with additional details.



2. Supersonic Flight regulations:

- Any speed exceeding the value of Mach 0.95 is considered supersonic;
- The supersonic activity of SO flights can be carried out only as OAT (Operational Air Traffic);
- The supersonic activity of Switzerland military aircraft overhead the national territory is allowed for training within the TSA Areas available on item1 (or eventually within temporary areas announced by specific NOTAM), with prior approval of air traffic control
- Supersonic flight is allowed only above FL245 and with the coordination of an ATC. Without an ATC supersonic flight is not allowed. When approved by ATC a minimum distance of 10NM from any airways as well as a distance of 20NM from any traffic should be kept all the time.

3. Interceptions

Aircraft shall adhere to the following rules when intercepting other air traffic in Switzerland airspace:

- Military aircraft shall be used to perform interceptions
- Interceptions are prohibited unless prior approval is obtained from the aircraft that is to be intercepted and the ATC station the intercept is to be performed on.
- Non-RVSM equipped aircraft shall not proceed within 2000ft vertical separation or 5NM longitudinal and lateral separation of any other aircraft unless prior permission from the intercepted pilot and ATC has been acquired.
- RVSM equipped aircraft shall not proceed within 1000ft vertical separation or 5NM longitudinal and lateral separation of any other aircraft unless prior permission from the intercepted pilot and ATC has been acquired.
- ATC stations shall notify the appropriate other ATC stations of the (intention to) intercept in case the aircraft involved are about to transition into another ATC station's airspace.

Aircraft (re)joining their own or other formations are not considered to be performing an intercept and are thus exempted from above mentioned rules.



4. Military Airports

- Locarno - LSZL
- Emmen - LSME
- Alpnach - LSMA
- Payern - LSMP
- Meringen - LSMM

Item 2. Special Areas for use by SO flights

Flight restriction areas and Danger Areas



Restricted areas are airspaces of defined dimensions over land or territorial waters of a country in which the flight of aircraft is restricted by certain conditions (Art. 2 (111) of the Implementing Regulation (EU) No. 923/2012 (SERA Regulation)).

The respective conditions are set out under the heading "Conditions of Use".

Area Type, Activity, and Identification	Conditions of Use	Lateral Limits	Vertical Limits	Activation Details
LS-R2 HOGHGANT	Reserved and designated for exclusive use by SO flights only	**	FL 130 ----- FL 100	By NOTAM (On email request at least 72 hours in advance from IVAO Users)
LS-R3 SPEER	Reserved and designated for exclusive use by SO flights only	**	FL 130 ----- FL 100	By NOTAM (On email request at least 72 hours in advance from IVAO Users)
LS-R4 LAC DE NEUCHATEL	Reserved and designated for exclusive use by SO flights only		8900 ----- GND	By NOTAM (On email request at least 72 hours in advance from IVAO Users)
LS-R4A LAC DE NEUCHATEL	Reserved and designated for exclusive use by SO flights only		8900 ----- 5000	By NOTAM (On email request at least 72 hours in advance from IVAO Users)
LS-R6 AXALP	Reserved and designated for exclusive use by SO flights only		FL 130 ----- 6000	By NOTAM (On email request at least 72 hours in advance from IVAO Users)



Area Type, Activity, and Identification	Conditions of Use	Lateral Limits	Vertical Limits	Activation Details
LS-R8 DAMMA STOCK	Reserved and designated for exclusive use by SO flights only	**	FL 280 ---- GND	By NOTAM (On email request at least 72 hours in advance from IVAO Users)
LS-R8A DAMMA STOCK	Reserved and designated for exclusive use by SO flights only	**	FL 280 ---- 9200	By NOTAM (On email request at least 72 hours in advance from IVAO Users)
LS-R11 ZUOZ / S-CHANF	Reserved and designated for exclusive use by SO flights only		FL 315 ---- GND	By NOTAM (On email request at least 72 hours in advance from IVAO Users)
LS-R11 A ZUOZ / S-CHANF	Reserved and designated for exclusive use by SO flights only		FL 315 ---- 7000	By NOTAM (On email request at least 72 hours in advance from IVAO Users)
LS-R13 AXALP	Reserved and designated for exclusive use by SO flights only		FL 130 ---- 6000	By NOTAM (On email request at least 72 hours in advance from IVAO Users)

Area Type, Activity, and Identification	Conditions of Use	Lateral Limits	Vertical Limits	Activation Details
---	-------------------	----------------	-----------------	--------------------

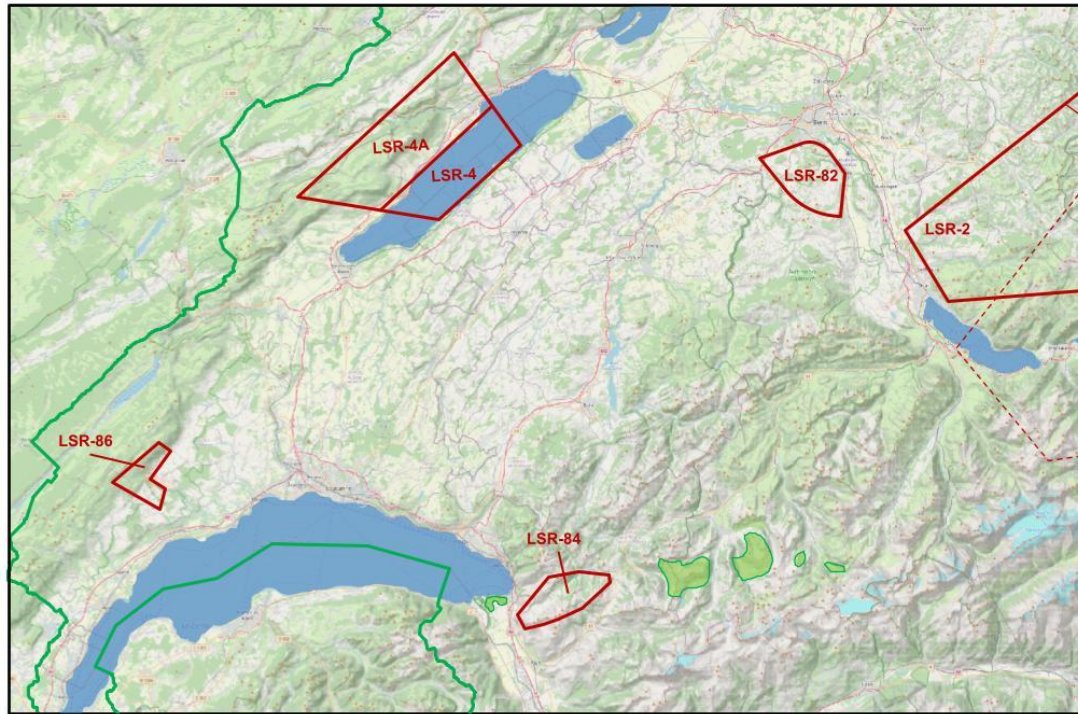


LS-R15 ENTLEBUCH	Reserved and designated for exclusive use by SO flights only	**	FL 100 ----- 5500	By NOTAM (On email request at least 72 hours in advance from IVAO Users)
LS-R19 BIERE	Reserved and designated for exclusive use by SO flights only	**	6600 ----- GND	By NOTAM (On email request at least 72 hours in advance from IVAO Users)
LS-R39 A / HEITLI LS-R39 B / BRISEN LS-R39 C / STOOS	Reserved and designated for exclusive use by SO flights only		FL 130 ----- NOTAM	By NOTAM (On email request at least 72 hours in advance from IVAO Users)
LS-84 HONGRIN	Reserved and designated for exclusive use by SO flights only		9500 ----- GND	By NOTAM (On email request at least 72 hours in advance from IVAO Users)
LS-R85 HINTERRHEIN	Reserved and designated for exclusive use by SO flights only		9500 ----- GND	By NOTAM (On email request at least 72 hours in advance from IVAO Users)
LS-R86 BIERE	Reserved and designated for exclusive use by SO flights only		5500 ----- GND	By NOTAM (On email request at least 72 hours in advance from IVAO Users)



Switzerland Sector West
MILITARY CHART

SWITZERLAND
ICAO



December 2021 – CH FLIGHT OPS DEPARTMENT

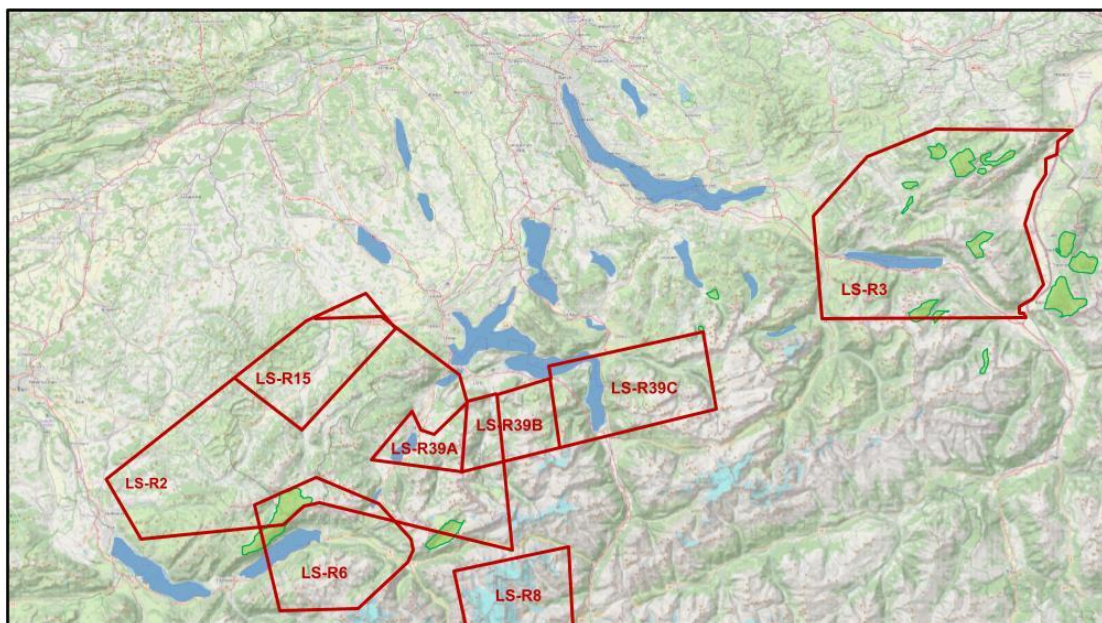


FLIGHT SIMULATION USE ONLY



Switzerland Sector East
MILITARY CHART

SWITZERLAND
ICAO



JANUARY 2022 – CH FLIGHT OPS DEPARTMENT

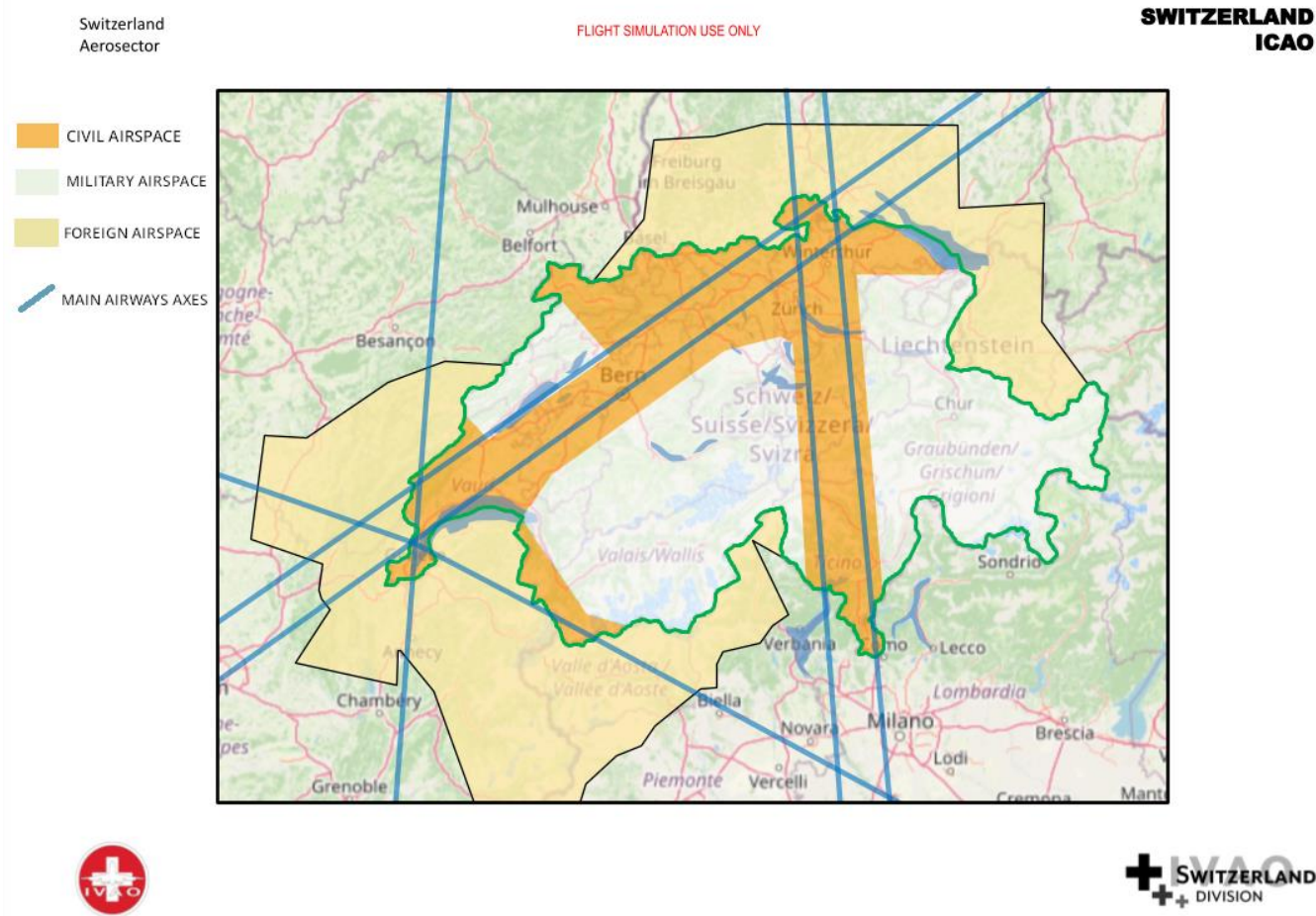


FLIGHT SIMULATION USE ONLY





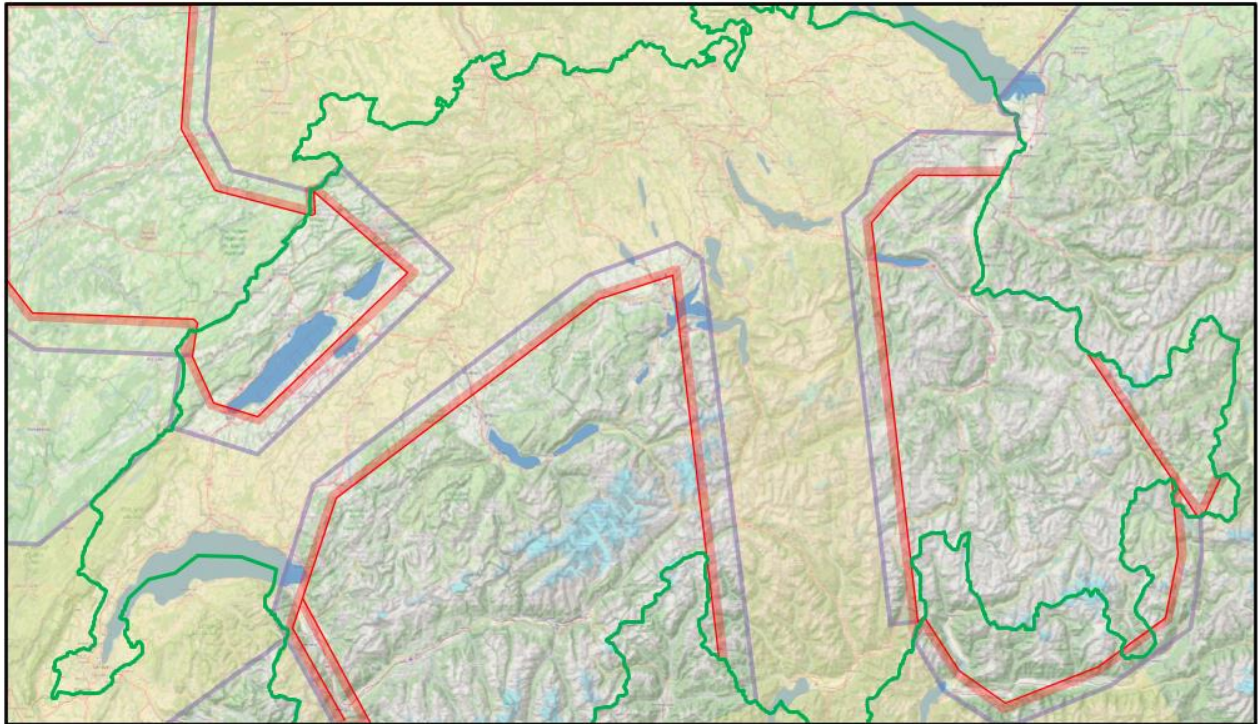
The Military Airspaces (in white) are divided by the 2 main civil airways corridors (in orange).





Switzerland
MILITARY CHART

SWITZERLAND
ICAO



JANUARY 2022 – CH FLIGHT OPS DEPARTMENT



FLIGHT SIMULATION USE ONLY



Item 3. controlling military units and other SO units other than civil ATS

Under development

All military airports are restricted to ADC and higher rated controllers.

Item 4. Divisional manual on controlling military units and other SO units

Under development.



Item 5. IVAO members registered elsewhere authorised to perform SO flights

Note. It is permissible for IVAO members to perform SO flights that constitute participation in international SO events, international SO tours, or divisional SO tours without authorisation of any division.

Item 6. SOGs registered elsewhere authorised to perform SO flights

Note. It is permissible for SOGs to perform SO flights that constitute participation in international SO events, international SO tours, or divisional SO tours without authorisation of any division.

Item 7. SO—related Letters of Agreements

None

Item 8. Links to additional information

All non-division member who wants to come fly in OAT in Switzerland must request an authorization by email 72 hours to CH-HQ.

— END OF DIVISIONAL SO ORDER —